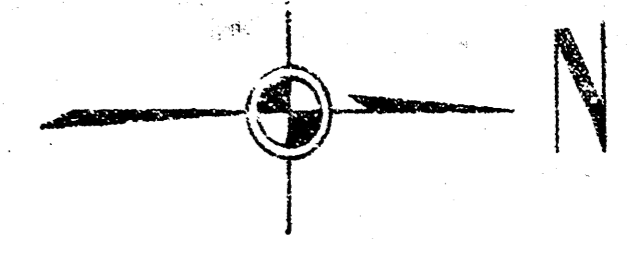
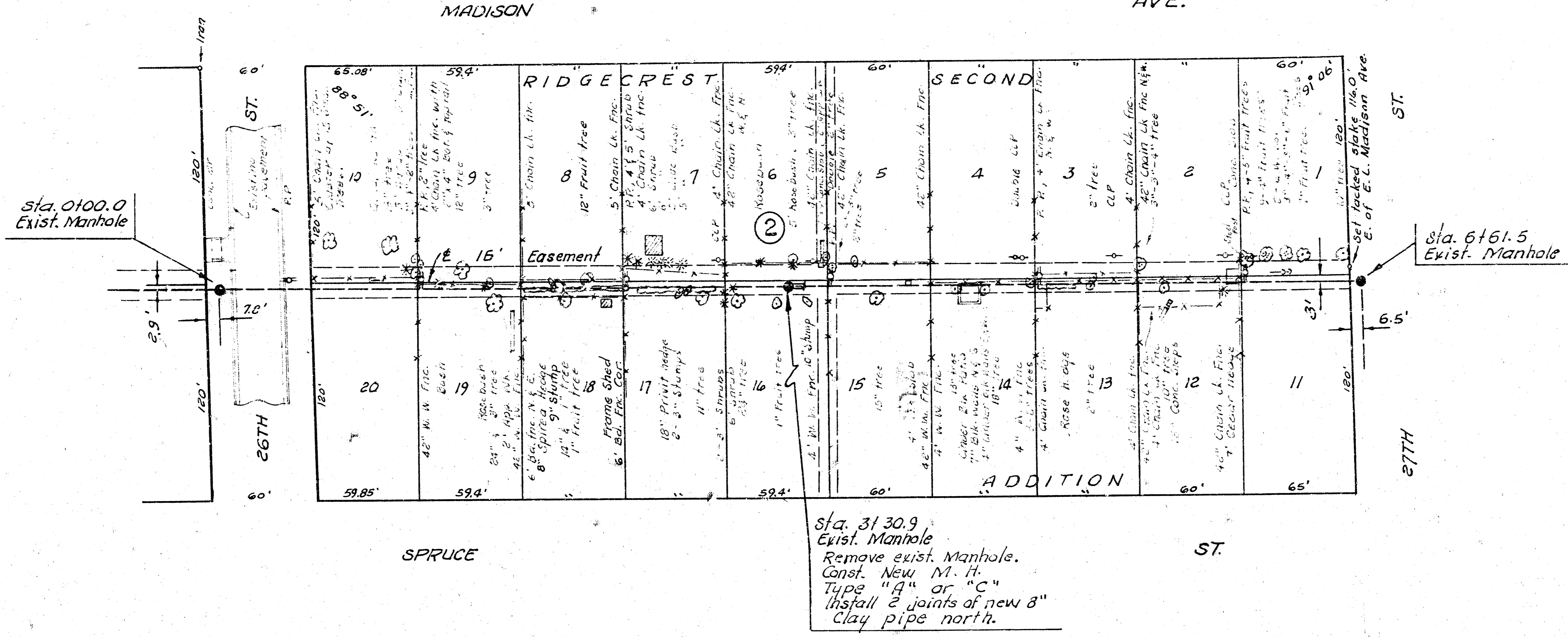


B. M. 134.94 R. R. Spike E. Side P. Pole
 on S.W. cor. Madison & 26th St. N.
 B. M. 137.07 R. R. Spike S. Side P. Pole
 on S.E. cor. Madison & 27th St. N.

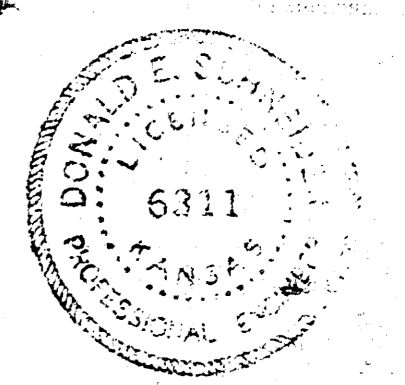
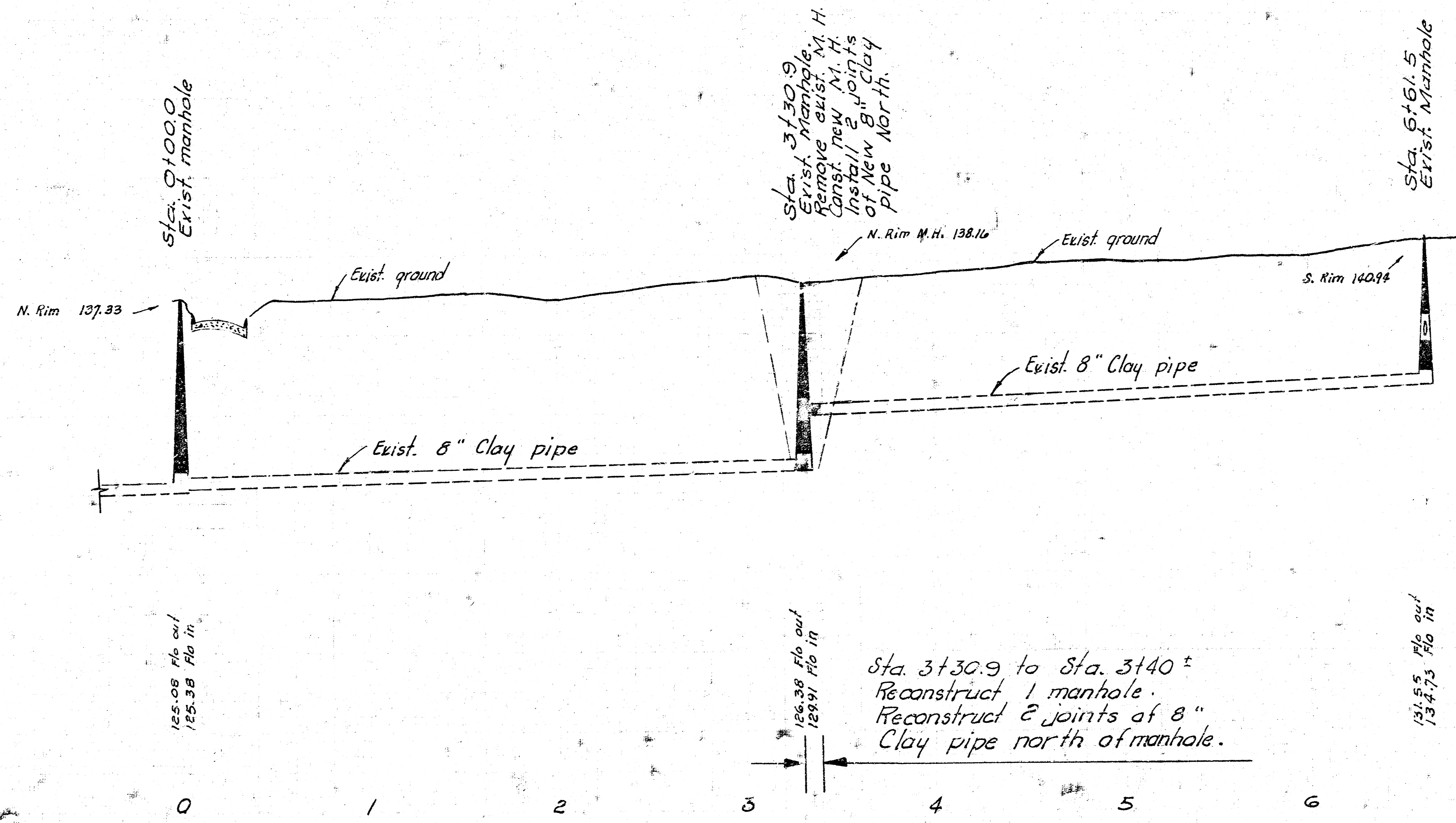


Plan Scale 1" = 40'
 Profile Scale 1" = 40' Horiz.
 1" = 5' Vert.



145
 140
 135
 130
 125
 120

145
 140
 135
 130
 125
 120



As Built 4-29-76

RECONSTRUCTION OF A PORTION OF	
LAT. 31, DISTRICT T, S. S. NO. 12	
IN 27TH ST. BETWEEN MADISON AVE. AND GROVE ST.	
CITY OF WICHITA, KANSAS	
R. W. LINN	CITY ENGINEER
DATE:	PROJECT NO. DBKL575060

1/2

1/2

B. M. 155.56 R. R. Spike W. Side P. Pole
on N.E. cor. Grove & 27th St. N.
E. M. 141.65 City Std. Grove & 25th
B. M. 137.07 R. R. Spike S. Side P. Pole
on S.E. cor. Madison & 27th St. N.

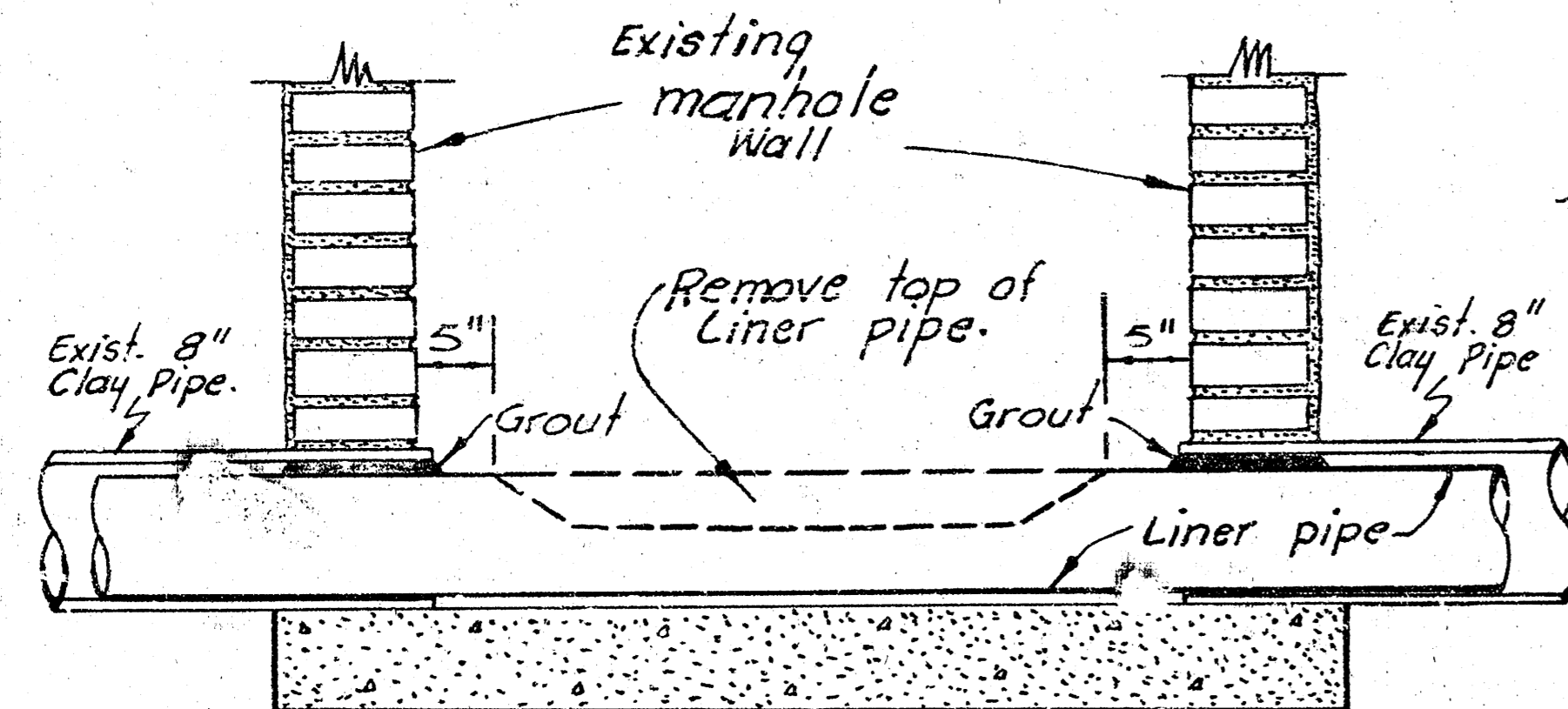
NOTE:
Insertion trench
to be west of
Sta. 6761.5.

Sta. 6761.5
Exist. manhole.
Remove and reconstruct
that portion of manhole
extending above Flo elev.
of Inlet Pipe.

*Removed & Replaced
Clay pipe 7702 to 7717*

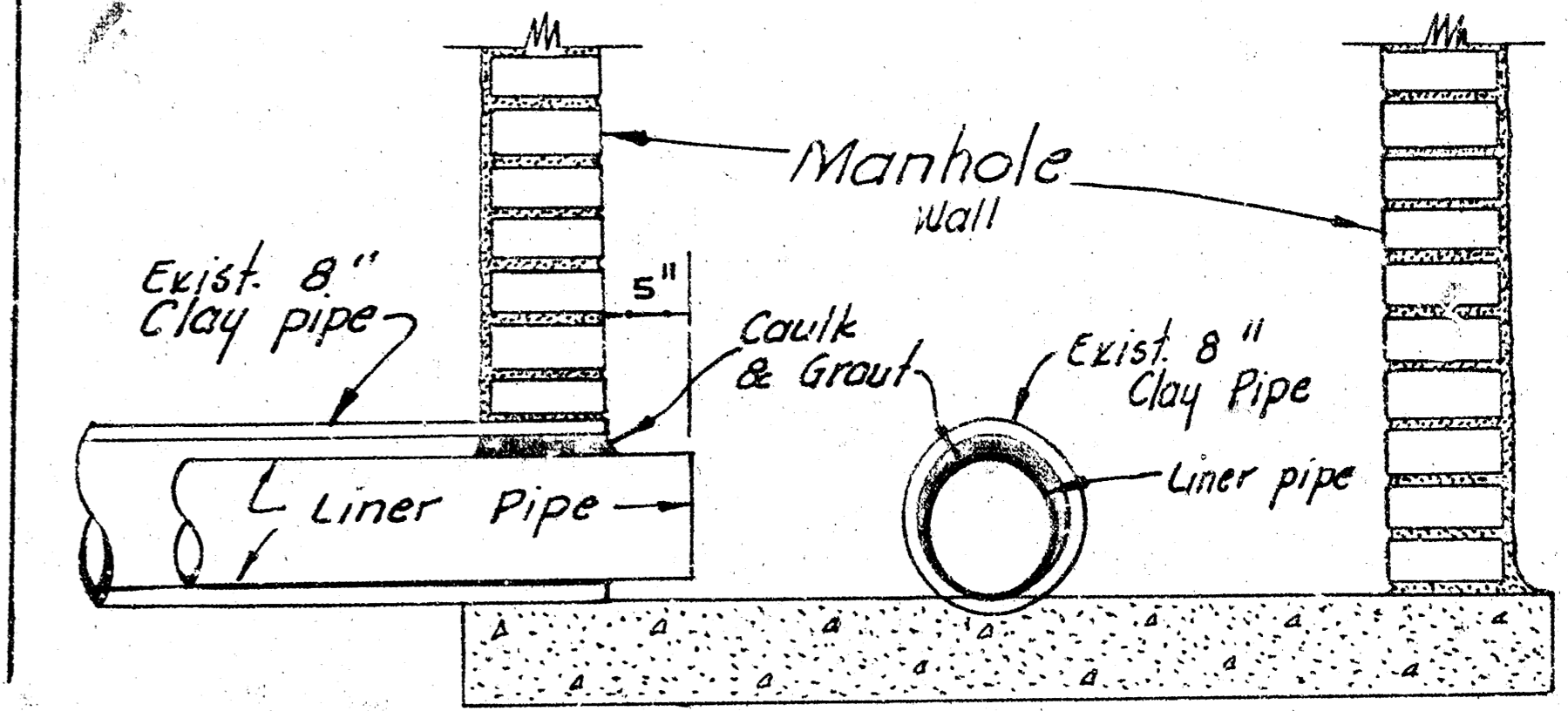
Sta. 8775.8
Exist. manhole.
See manhole Detail.

Sta. 10191.8
Exist. manhole.

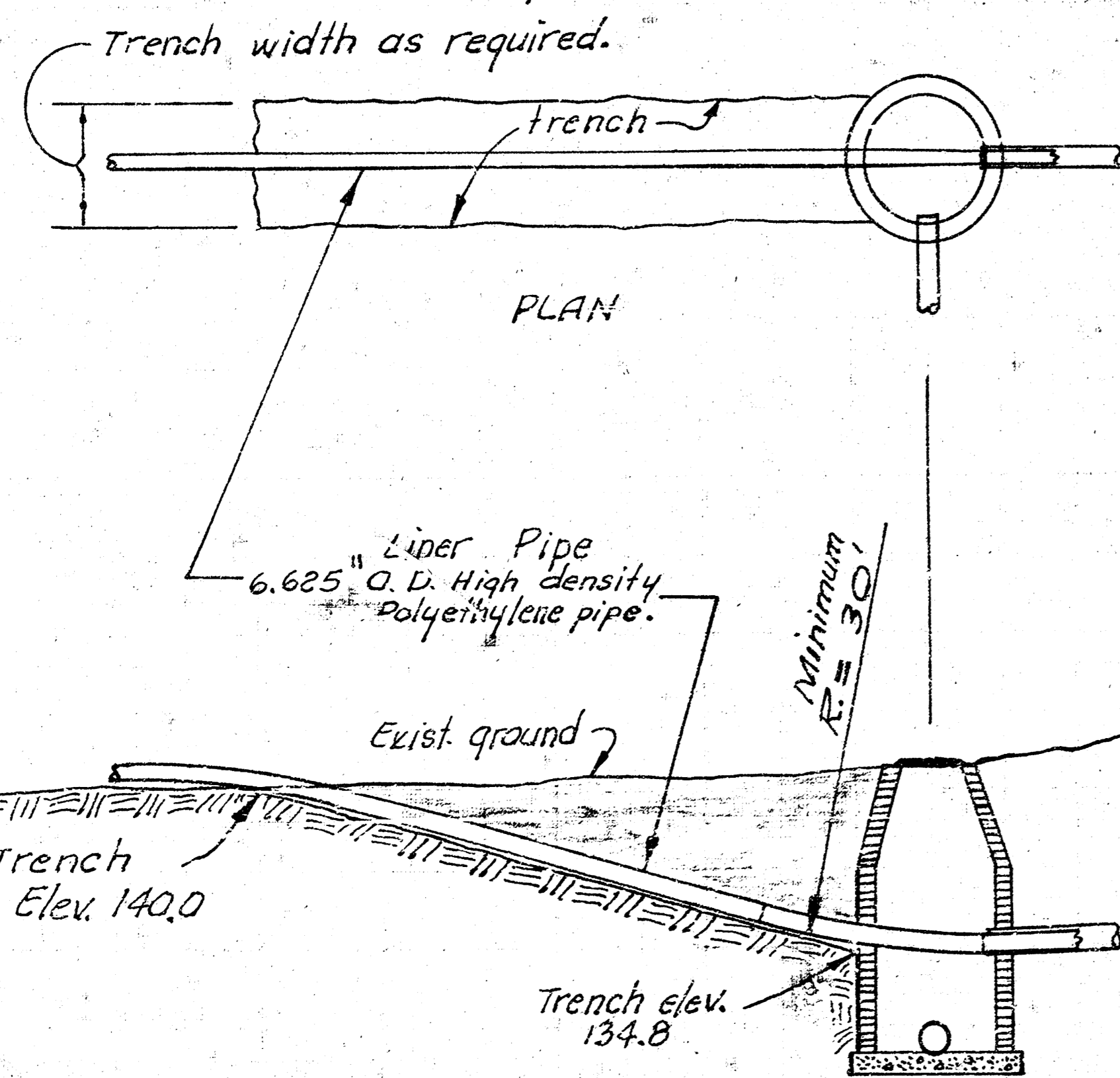


LINER PIPE THROUGH MANHOLE
DETAIL

Sta. 8775.8



SEALING LINER PIPE
AT MANHOLE



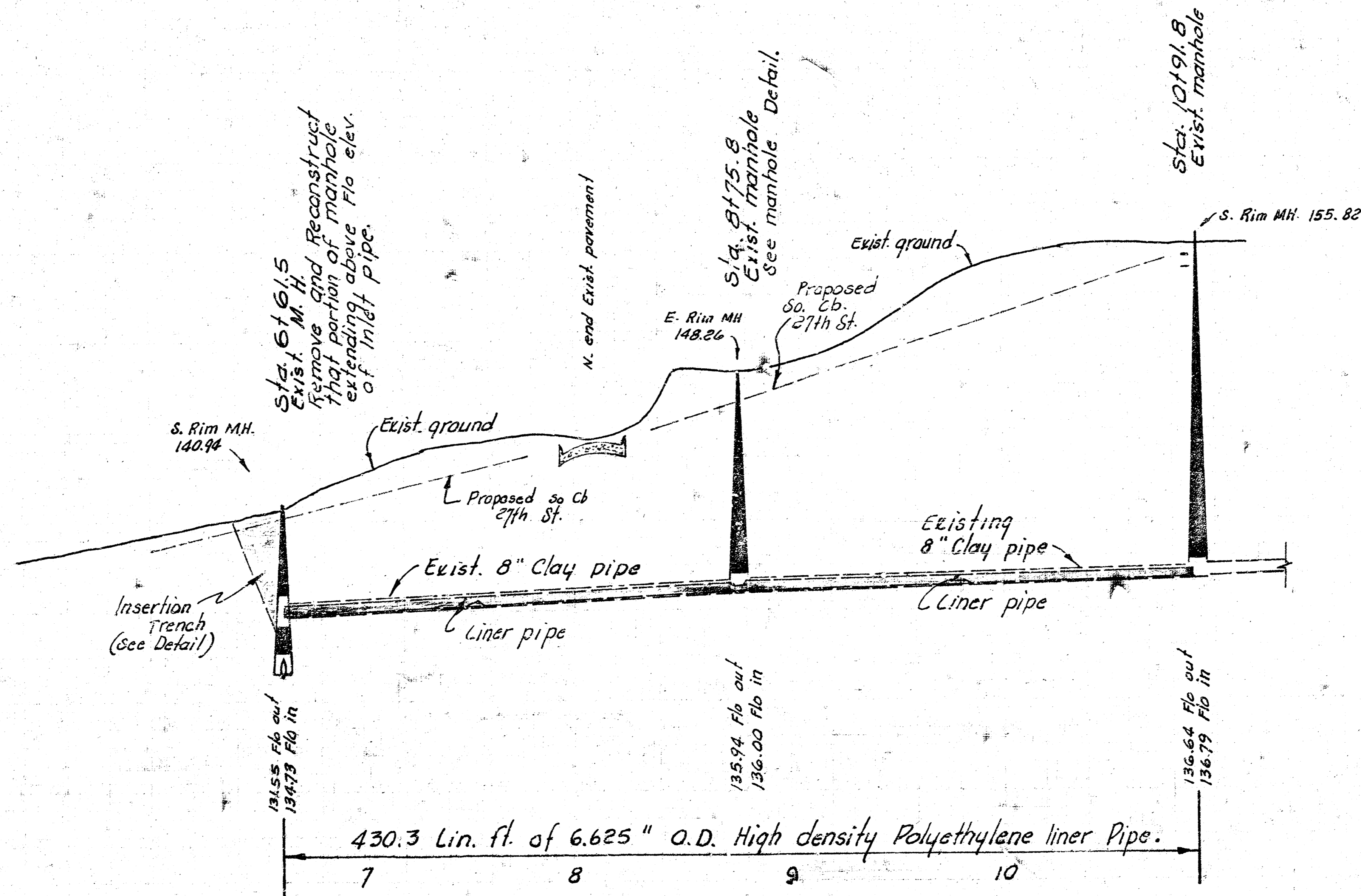
PLAN

155
150
145
140
135

ELEVATION
22.5'

INSERTION TRENCH
DETAIL
STA. 6761.5

2.5'
Scale



430.3 Lin. ft. of 6.625" O.D. High density Polyethylene liner Pipe.

7 8 9 10

2/2

RECONSTRUCTION OF A PORTION OF
LAT. 31, DISTRICT T, S. S. NO. 12
PROJECT NO. DBK L575060

