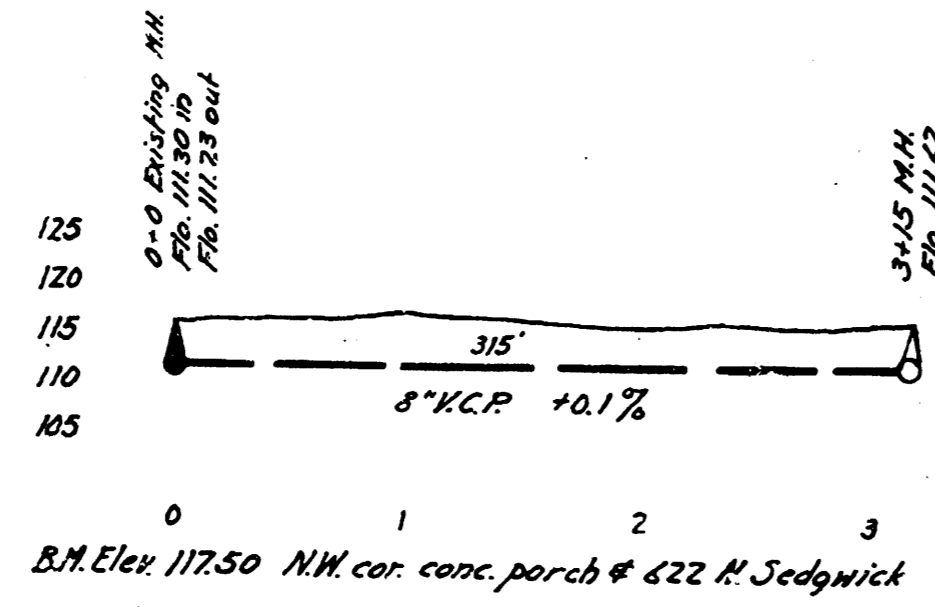
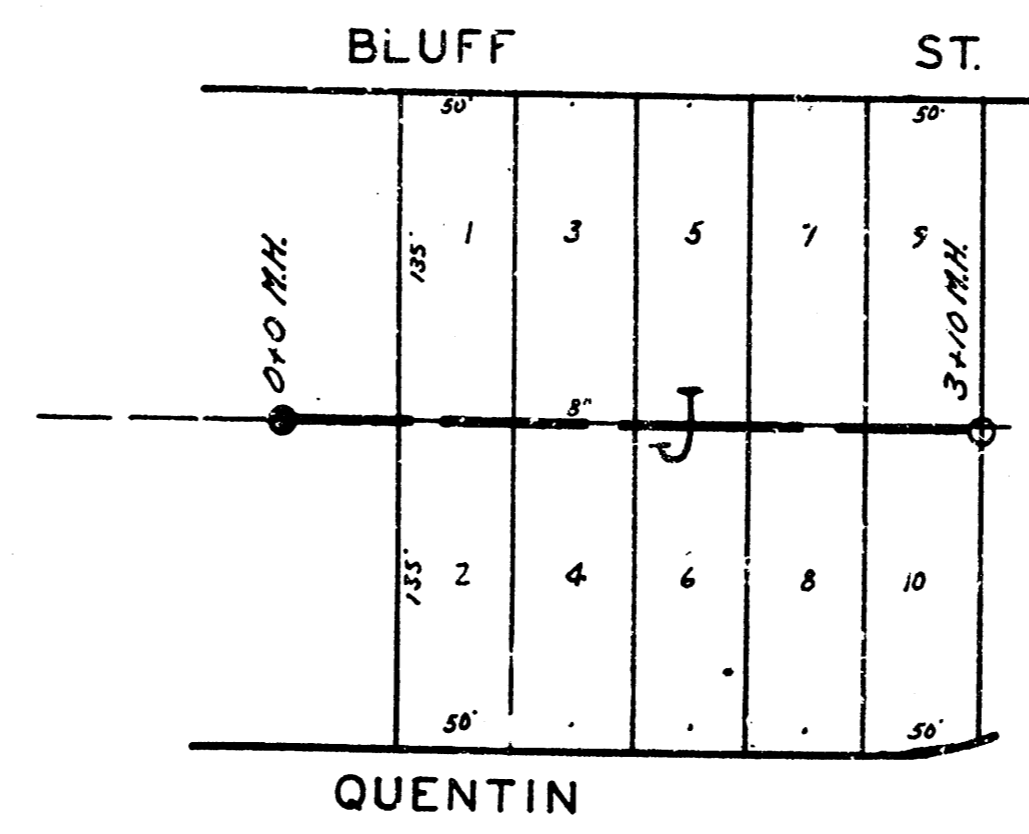


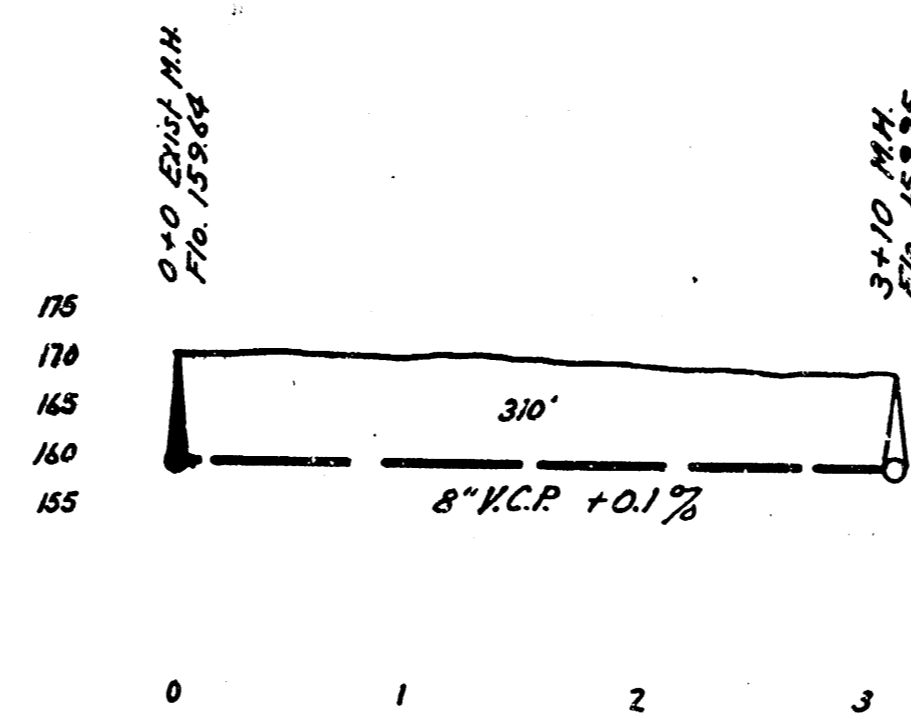
LAT. 20, DIST. A, S.S. #21



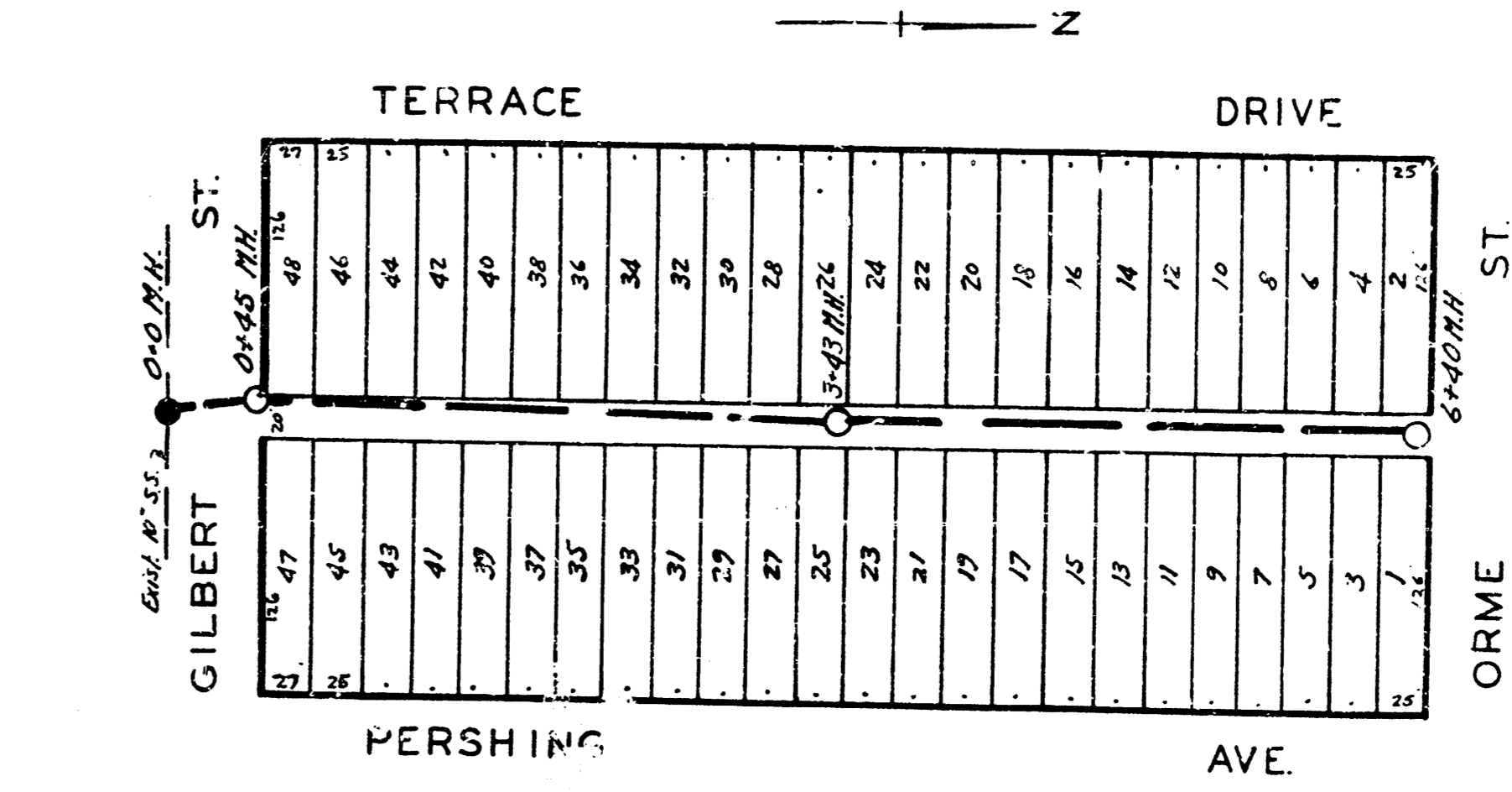
B.M. Elev. 117.50 NW cor. conc. porch @ 422 N. Sedgwick



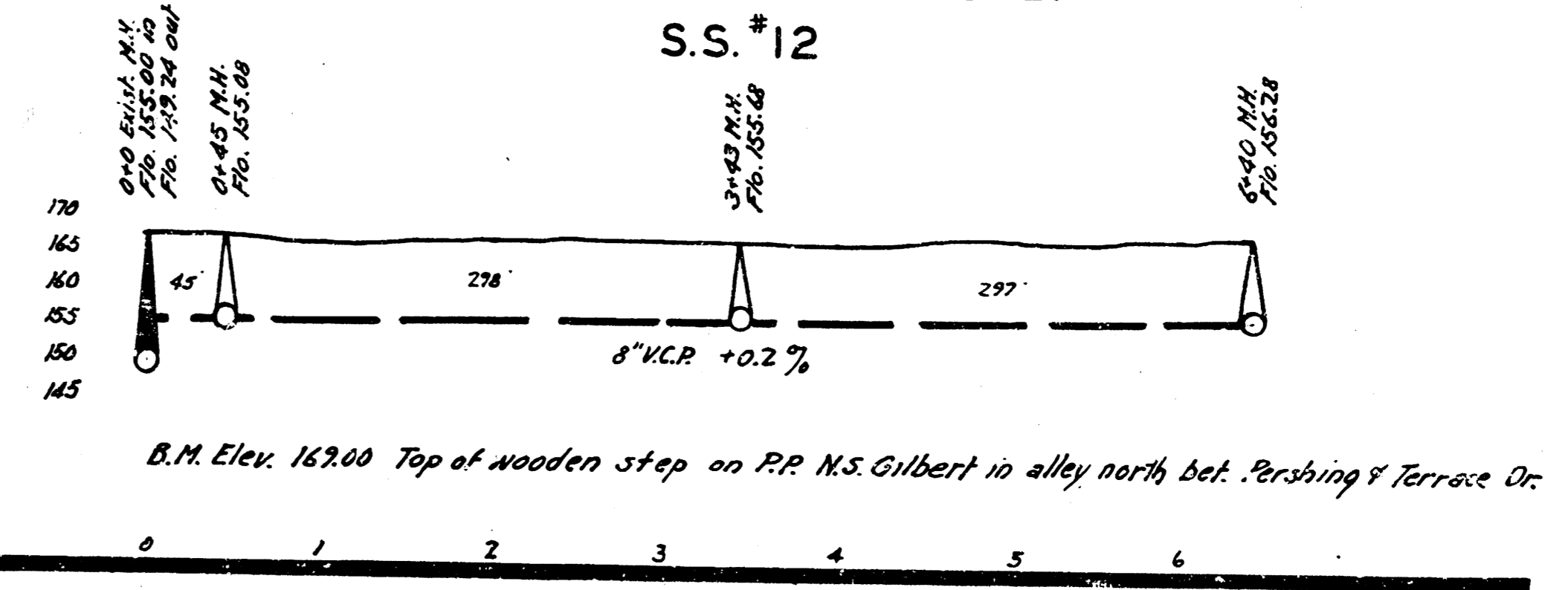
QUENTIN



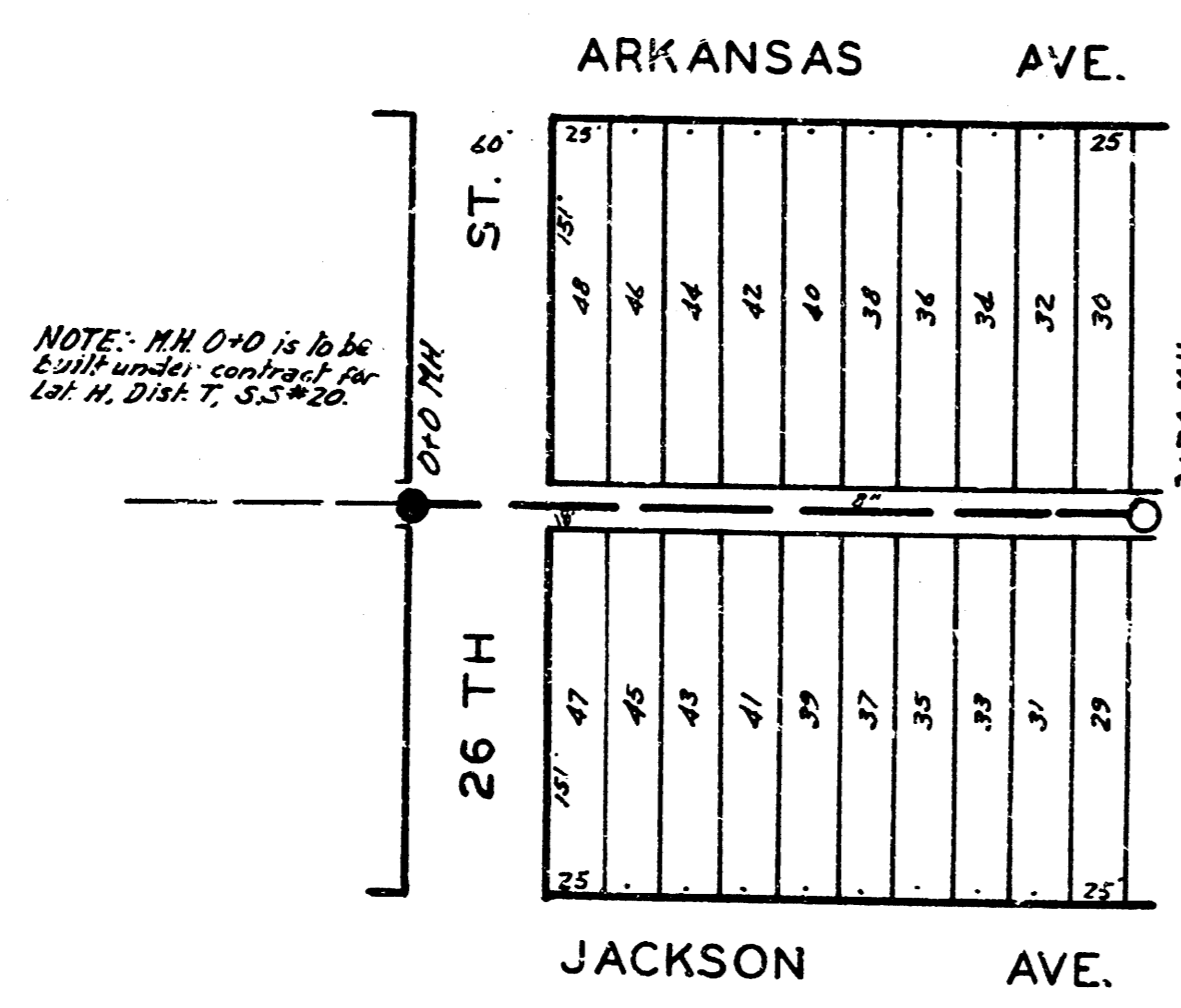
LAT. 4, DIST. 6, S.S. #12



LAT. 4, DRYCREEK SUB. S.S. #12

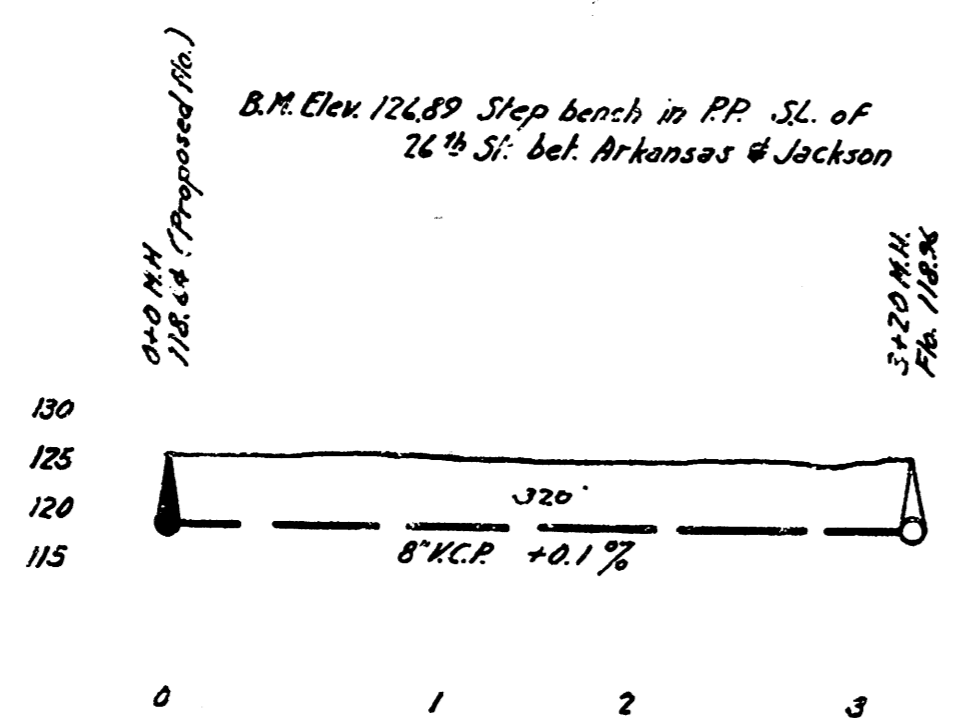


B.M. Elev. 162.00 Top of wooden step on R.R. N.S. Gilbert in alley north bet. Pershing & Terrace Dr.

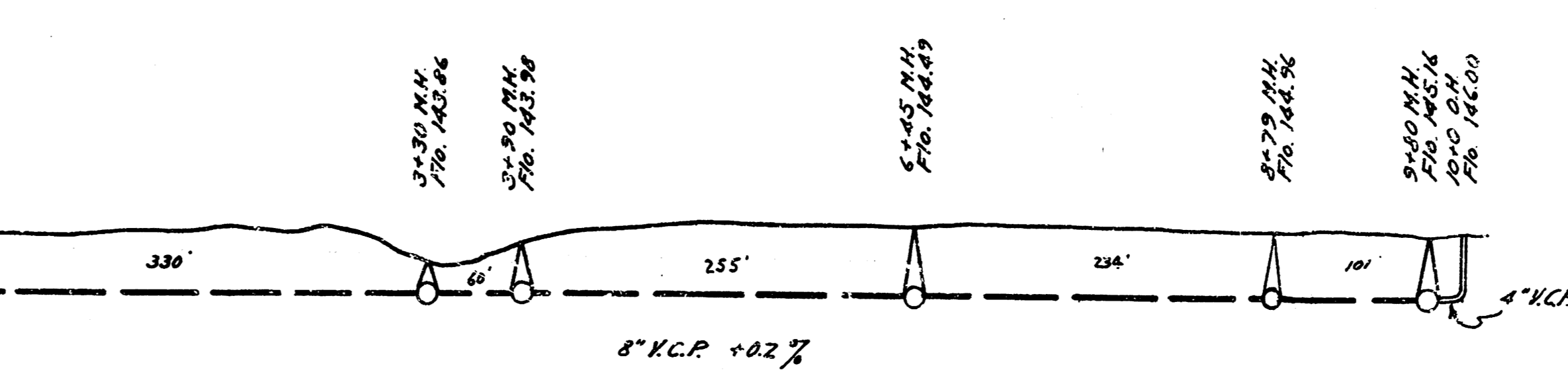
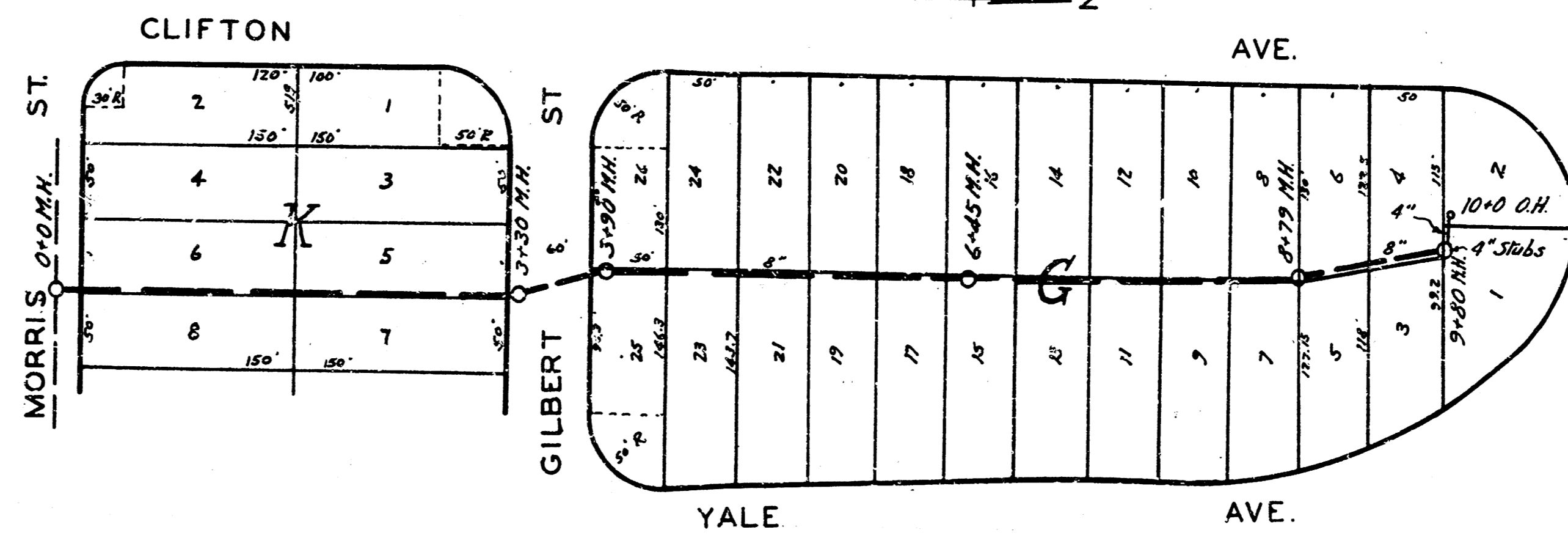


NOTE: N.H. D.H. is to be 20' from sidewalk to center of lot. N. Dist. T. S.S. #20

LAT. I, DIST. T. S.S. #20



B.M. Elev. 126.89 Step bench in R.R. S.L. of 26th St. bet. Arkansas & Jackson



B.M. Elev. 148.85 Step bench in R.R. N.S. Morris @ E.S. Clifton

ENGINEERING DEPARTMENT
CITY OF WICHITA, KANSAS
P.I. BROCKWAY CITY ENGINEER
B.E. SMITH ENGINEER OF DESIGN
DECEMBER 1941 SCALE 1"=80'