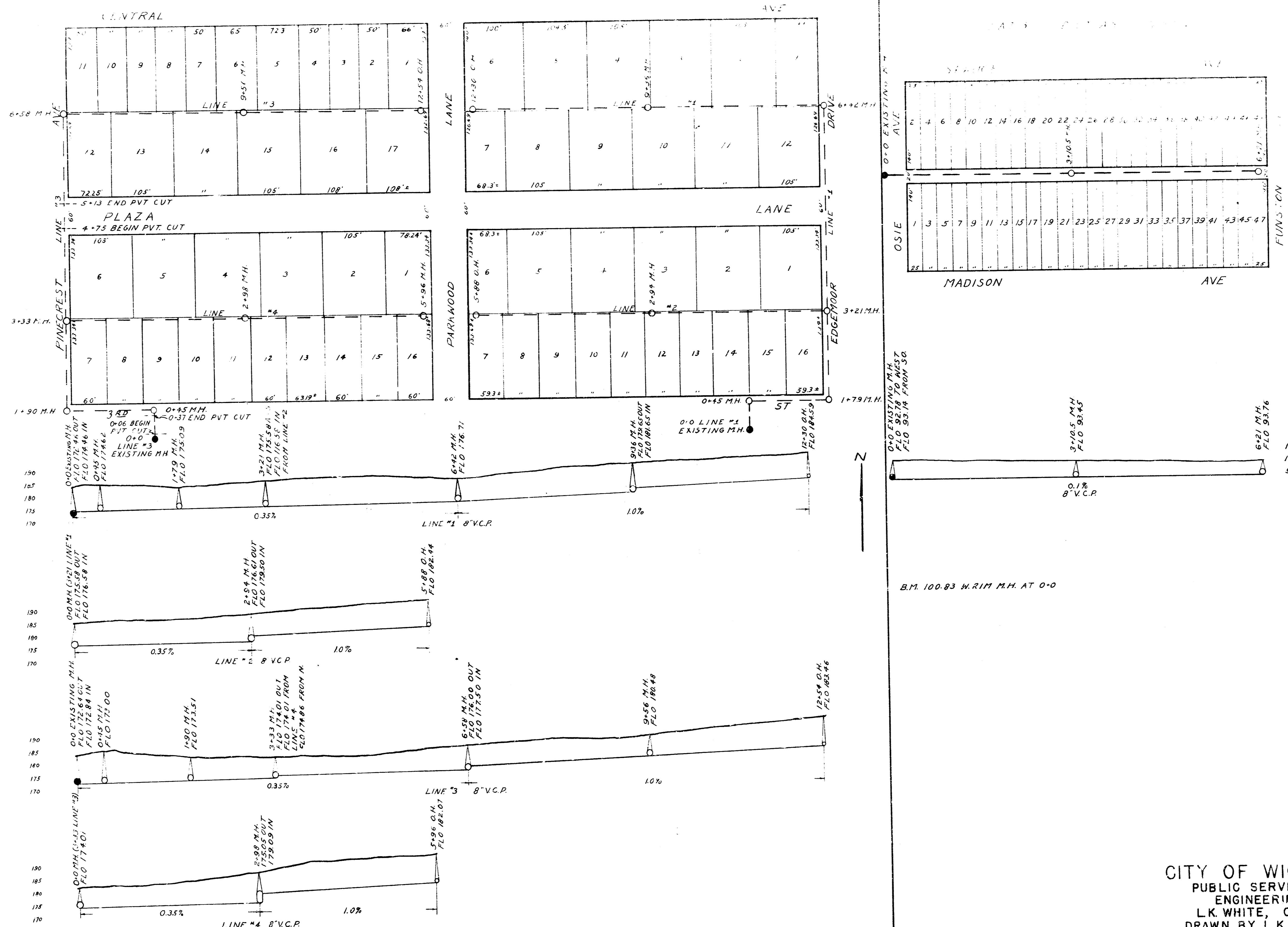


LATERAL 18 DRY CREEK SUBMAIN 55 "12



ORIGINAL B.M. 186.55 'X' ON E. PAVT. CENTRAL + EDGE MOOR DRIVE
 B.M. 183.86 'S' RIM 6.0' M.H. @ 0+0' LINE #1
 B.M. 181.8 'G' IN GLOBE, N. END OF CO. ON E.S. PARKWOOD LANE - S.L. OF 3.32
 B.M. 186.06 'STEP BENCH' IN R.R. AT STA. 0+05' LINE #3

CITY OF WICHITA, KANSAS
 PUBLIC SERVICE DEPARTMENT
 ENGINEERING DIVISION
 L.K. WHITE, CITY ENGINEER
 DRAWN BY L.K. SUHM FEB. 1946