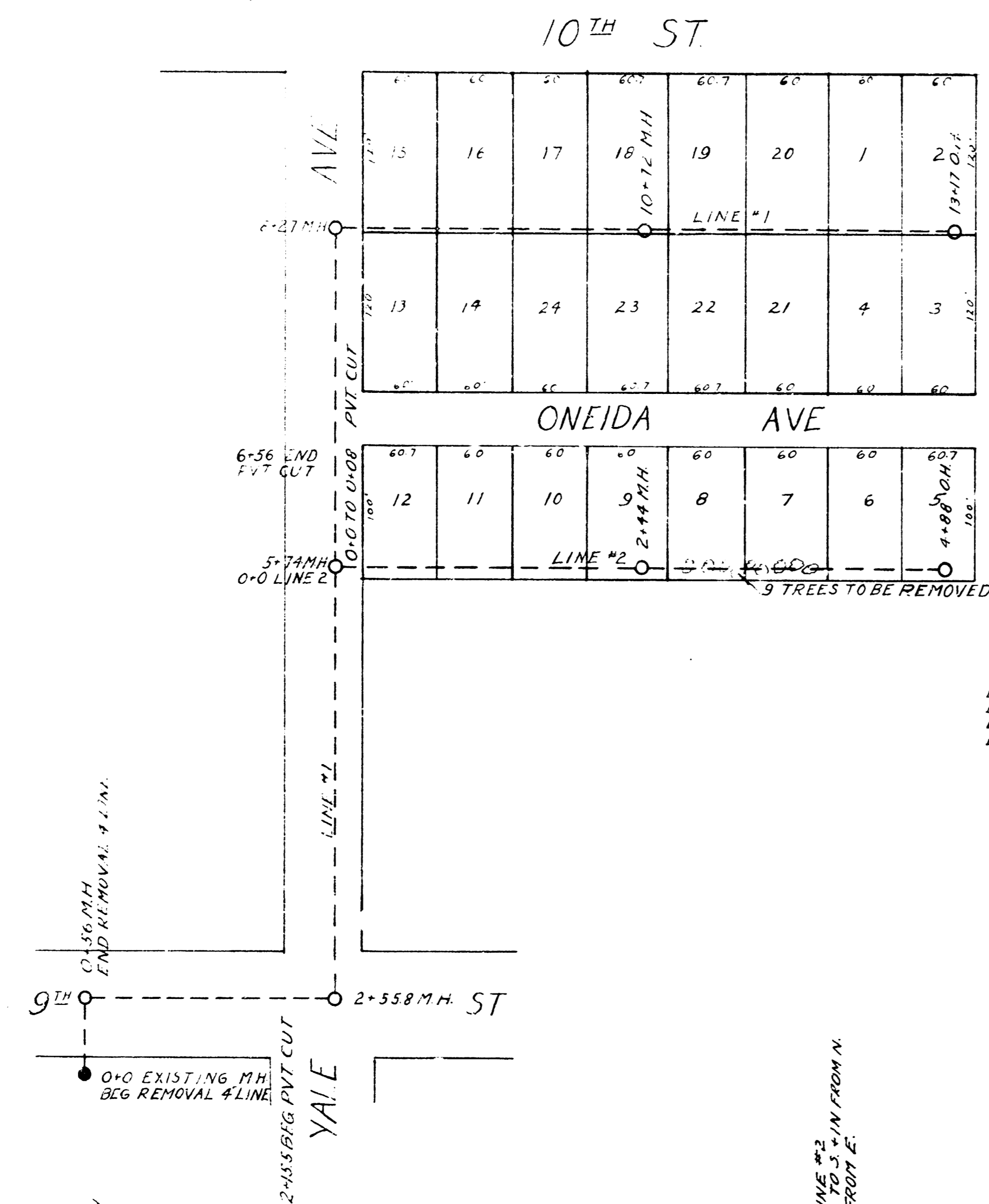
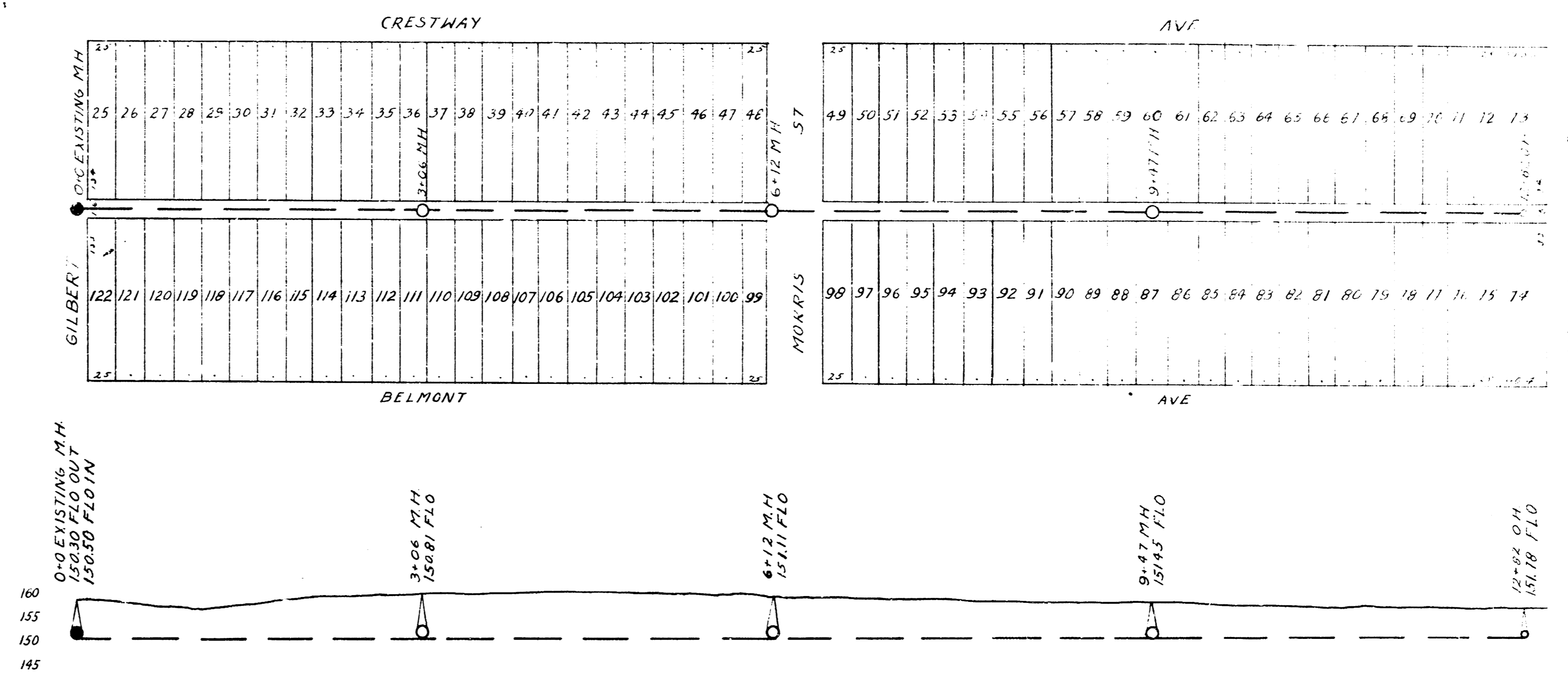


LATERAL 9 DIST D S.S. #12

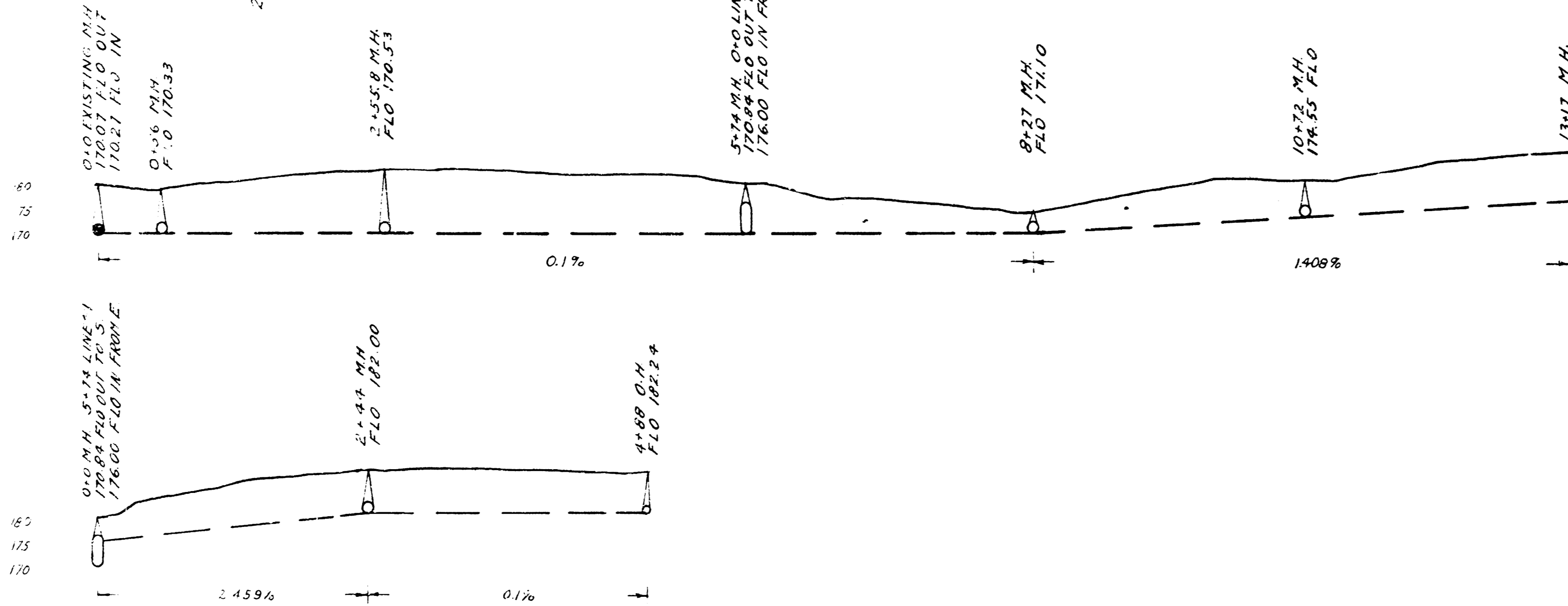


B.M. 19320 STEP BENCH IN P.P. ONE S. ROOSEVELT - N.L. ONEIDA
 B.M. 17452 STEP BENCH IN COR. POST SW COR 10TH - YALE
 B.M. 17540 COR. IRON N.E. COR. ONEIDA + YALE
 B.M. 18656 SW COR. CONC. STEP. HOUSE #1002 N. ROOSEVELT

LAT 19 DRY CREEK SUBMAIN S.S. #12



B.M. 15790 "X" IN E. C. BELMONT + N.L. GILBERT
 B.M. 16065 20P SPIKE IN E.S. POWER POLE E.S. ALLEY + S.S. MORRIS
 B.M. 15879 SW COR. CONC. PORCH, HOUSE # 852 BELMONT



CITY OF WICHITA, KANSAS
 DEPARTMENT OF SERVICE
 L.K. WHITE, CITY ENGINEER
 APRIL 1946