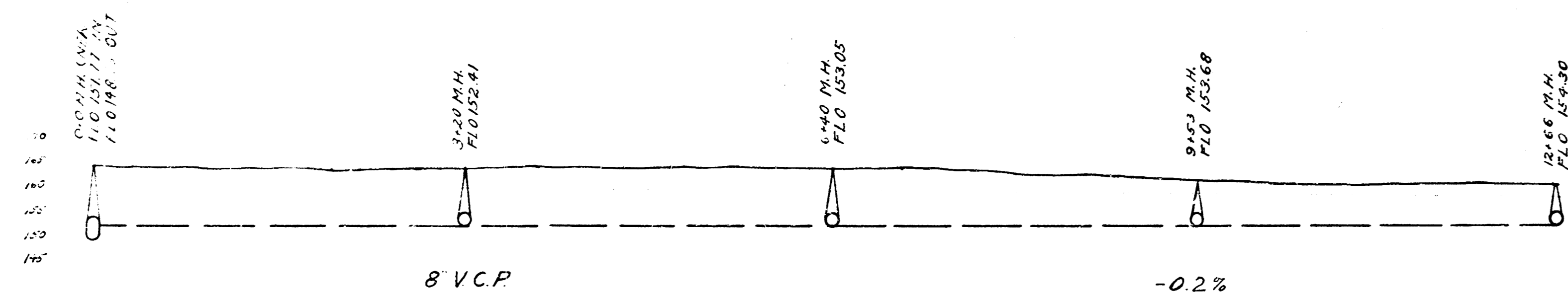
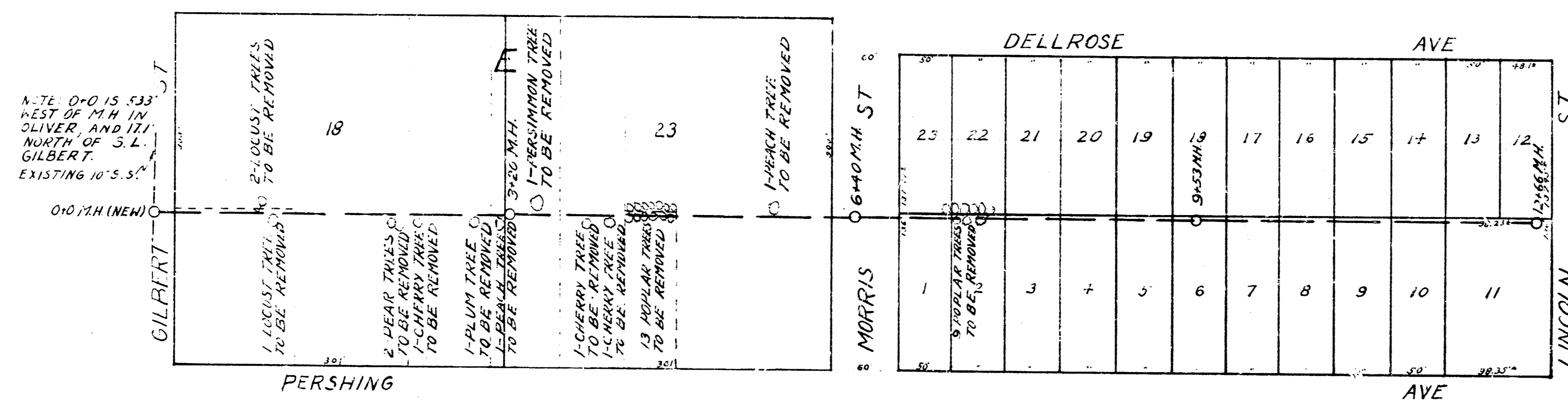
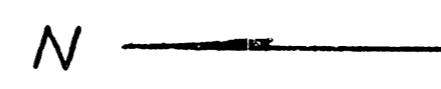


LAT 20, DRY CREEK SUB, S.S.#12

B.M. 149.65 S.W. COR LONG PORCH, REAR HOUSE SE GILBERT + PERSHING
 B.M. 149.77 60 FT SPIKE IN POWER POLE, N.S. MORRIS 50' N. OF DELROSE
 B.M. 149.93 100 FT IRON N.S. LINCOLN BET. PERSHING + DELROSE



SERVICE DEPARTMENT
 CITY OF WICHITA, KANSAS
 ENGINEERING DIVISION
 L.A. WHITE CITY ENGINEER
 NOV. 1946 1" = 80'