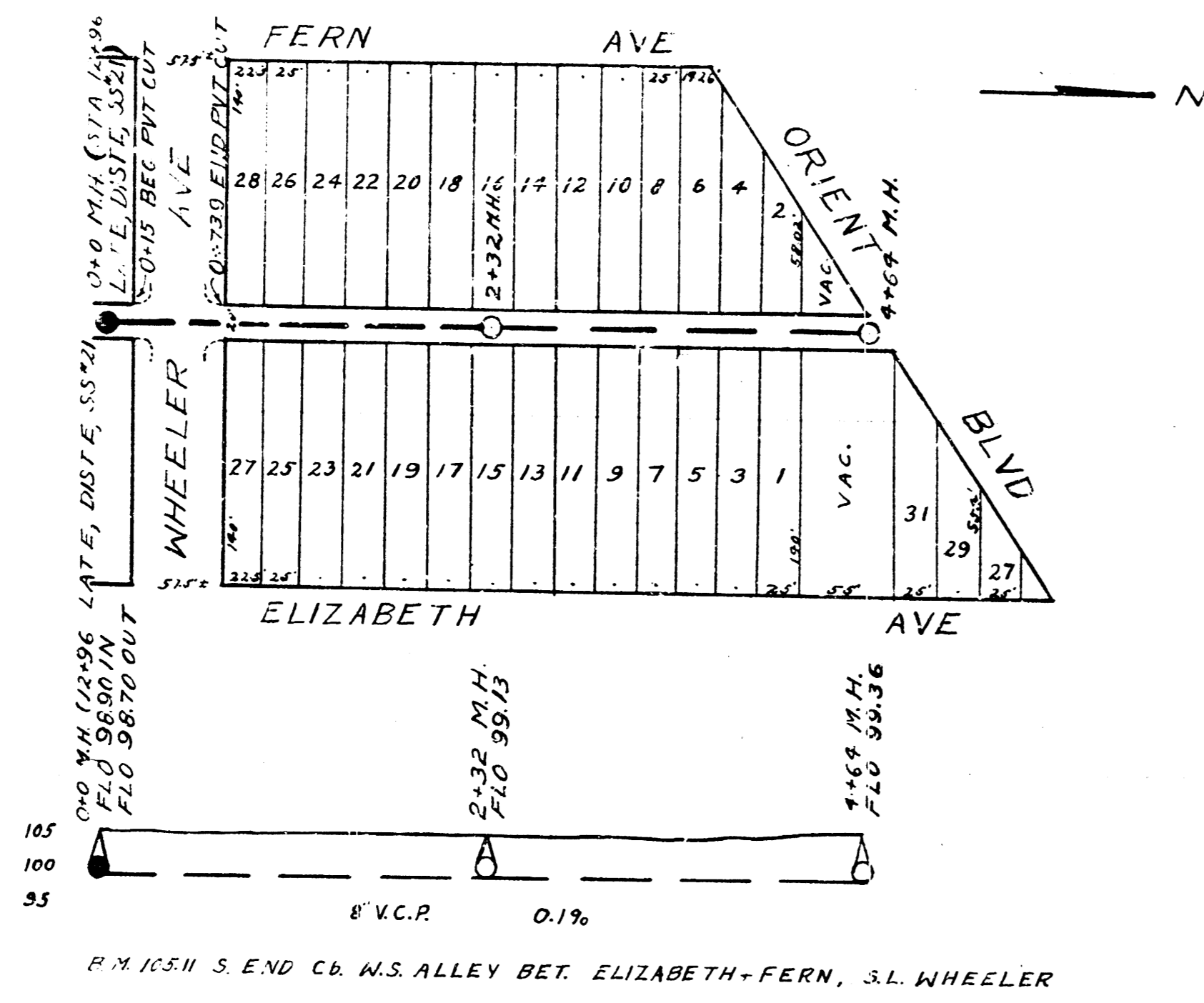
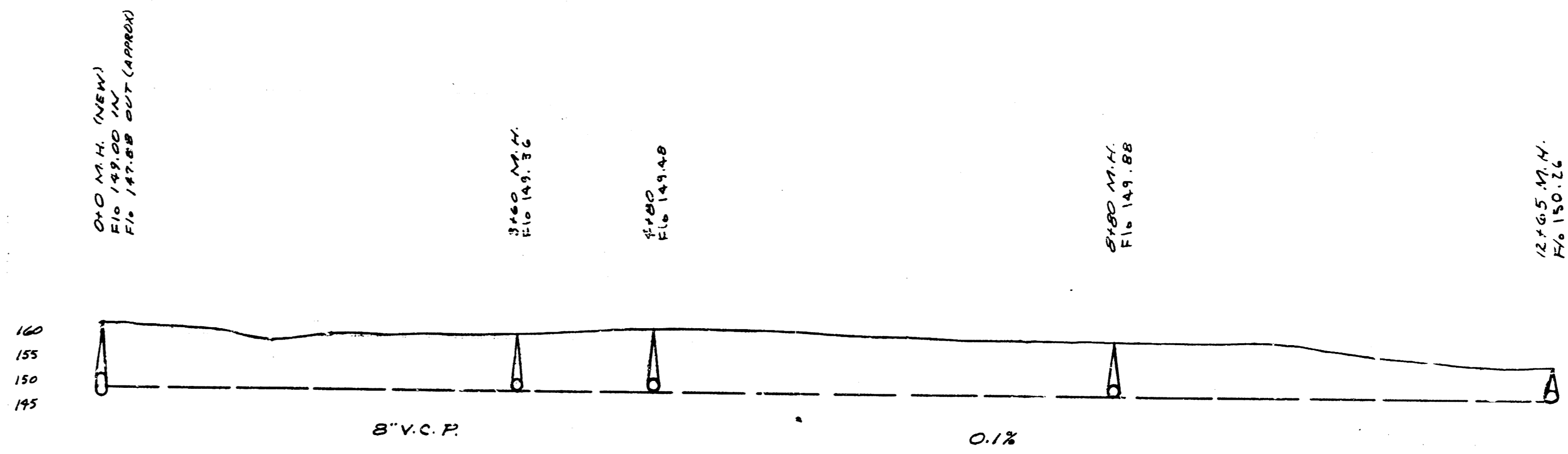
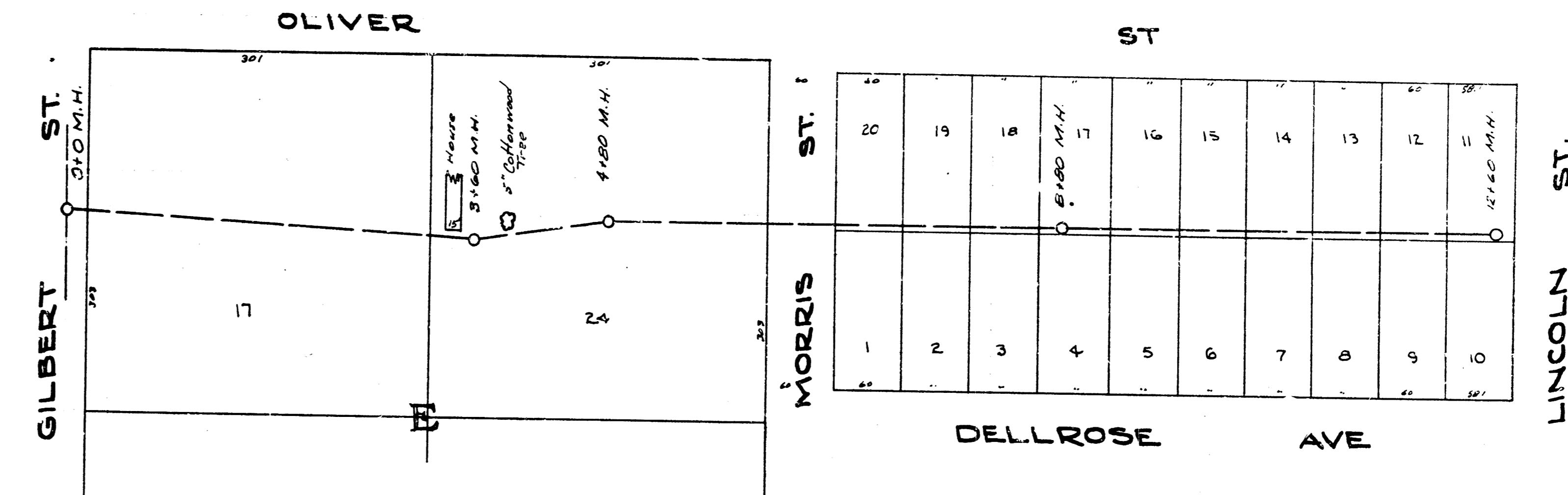


LAT F, DIST E, S.S.#21



R.M. 16511 S. END CR. N.S. ALLEY BET. ELIZABETH-FERN, S.L. WHEELER



B.M. 156.93 6" in Globe S. Co. Gilbert W.I. Oliver  
 B.M. 142.70 6" in W.I. Power Pole N.E. Morris & 160' W. of E. Oliver  
 B.M. 157.16 6" in Globe S. Co. Lincoln W.I. Oliver

LAT. 24, DRY CREEK SUB, S.S.# 12

DEPARTMENT of SERVICE  
 CITY of WICHITA, KANSAS  
 ENGINEERING DIVISION  
 LK WHITE - CITY ENGINEER  
 SANITARY SEWER  
 Scale: 1"=80' APRIL 1947  
 Lat F, Dist E, S.S.# 21  
 Lot 24, D.C.S., S.S.# 12