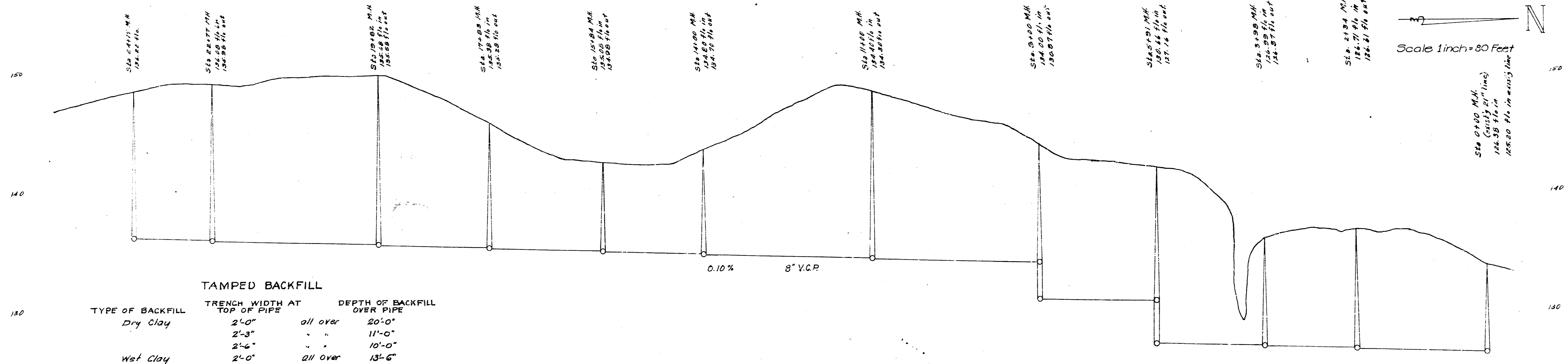
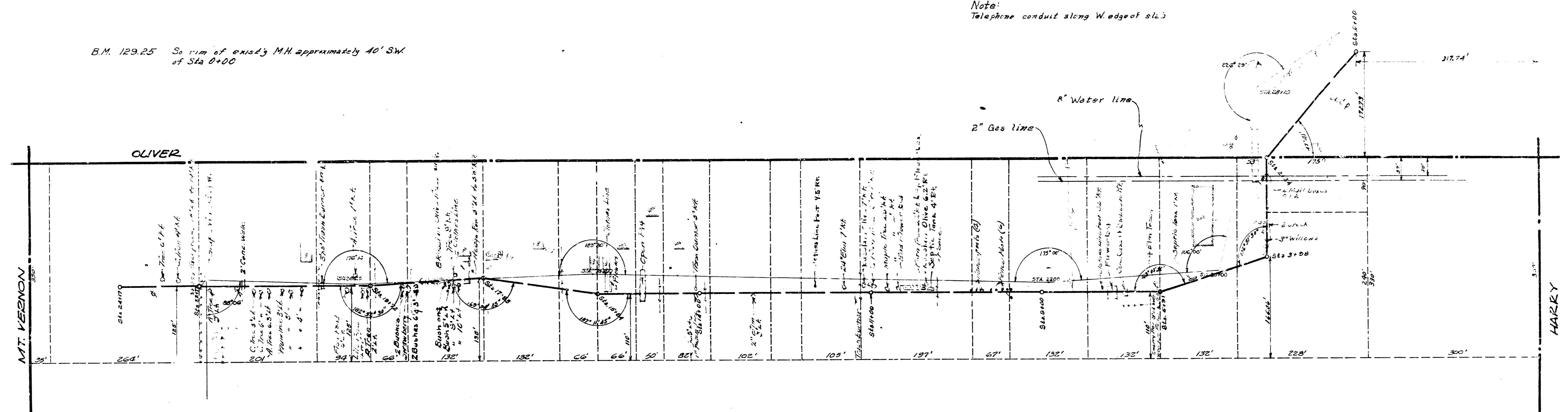


A-51

B.M. 129.25 So rim of exist'g M.H. approximately 40' SW of Sta 0+00

Note:
Telephone conduit along Wedge of sls.



TAMPED BACKFILL

| TYPE OF BACKFILL | TRENCH WIDTH AT TOP OF PIPE | DEPTH OF BACKFILL OVER PIPE |
|------------------|-----------------------------|-----------------------------|
| Dry Clay | 2'-0" | all over 20'-0" |
| | 2'-3" | " " 11'-0" |
| | 2'-6" | " " 10'-0" |
| Wet Clay | 2'-0" | all over 13'-6" |
| | 2'-3" | " " 10'-0" |

Note: Both plan & profile are reversed

Scale 1 inch = 80 Feet

Sta 0+00 M.H. (cast 24" dia)
124.50 ft. in
128.20 ft. in = 43.5' dia

LAT. 51, D.C.S., SS*12
City of Wichita, Kansas
L. K. White ~ City Engineer
March 1951 Proj No C20-53

