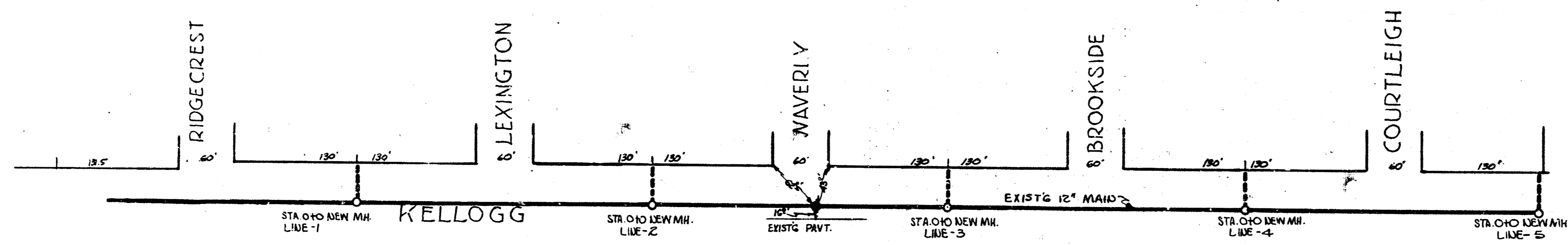
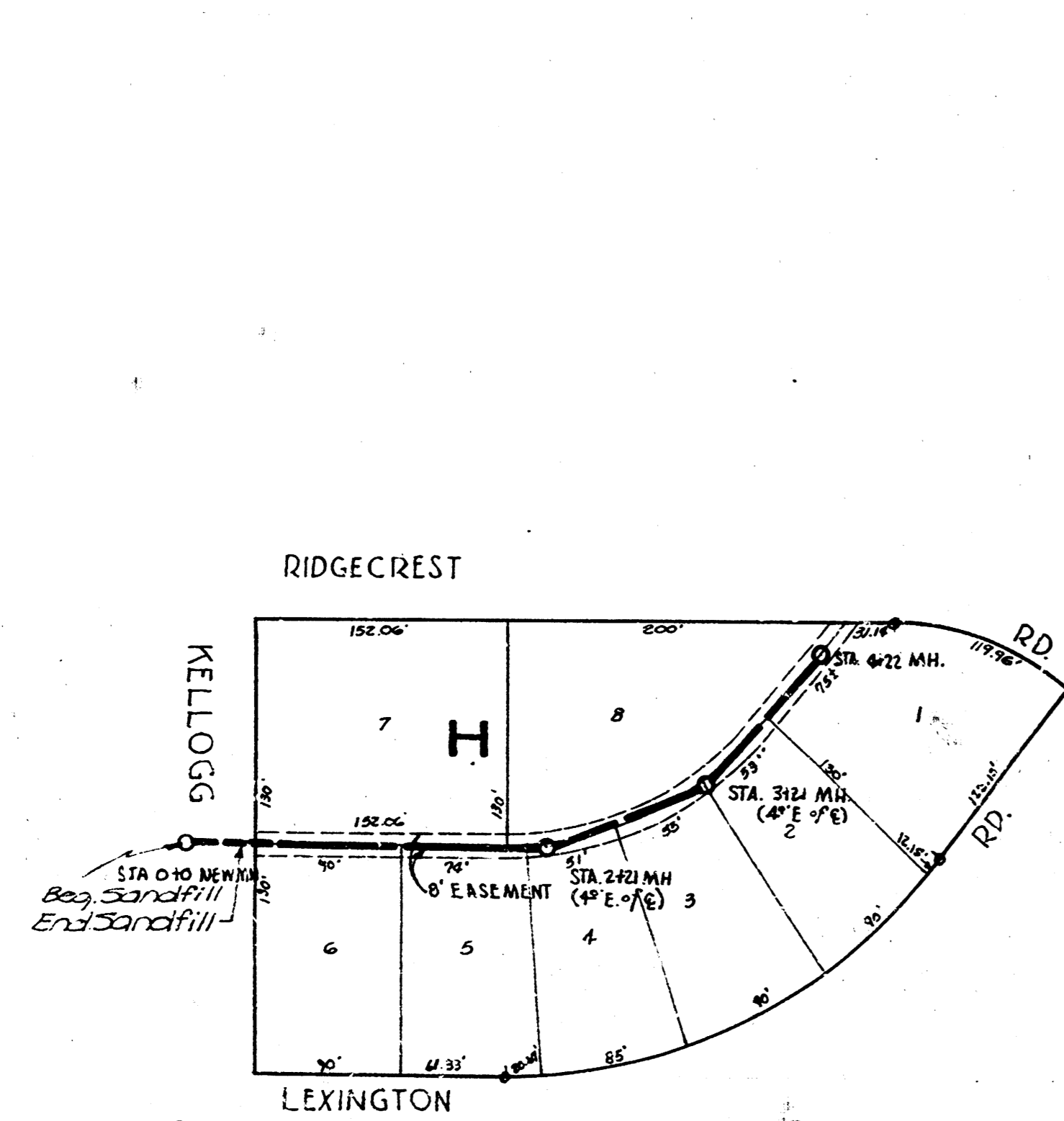


AT. 52, DRYCREEK SUBMAIN, SS. 12
CITY OF WICHITA, KS.
 L.K. WHITE ... CITY ENGINEER
 SHIT. 113
 DATE 9-5-50 PROJ. NO. C20-55

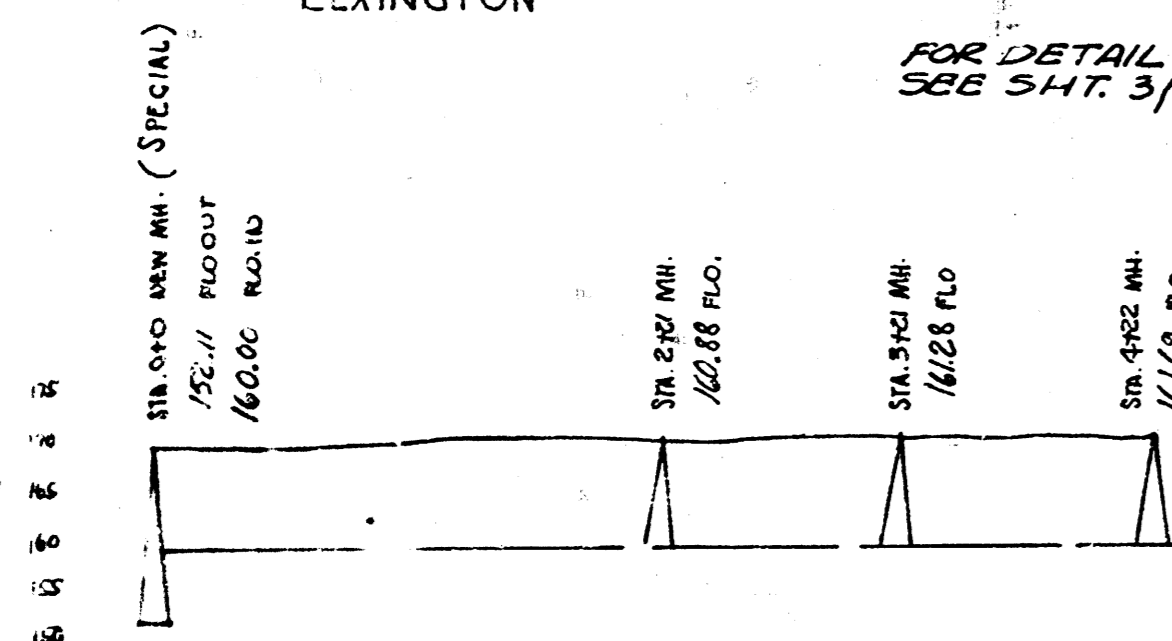
L.K. White
 L.K. WHITE - City Engineer
 Date: 9-22-50



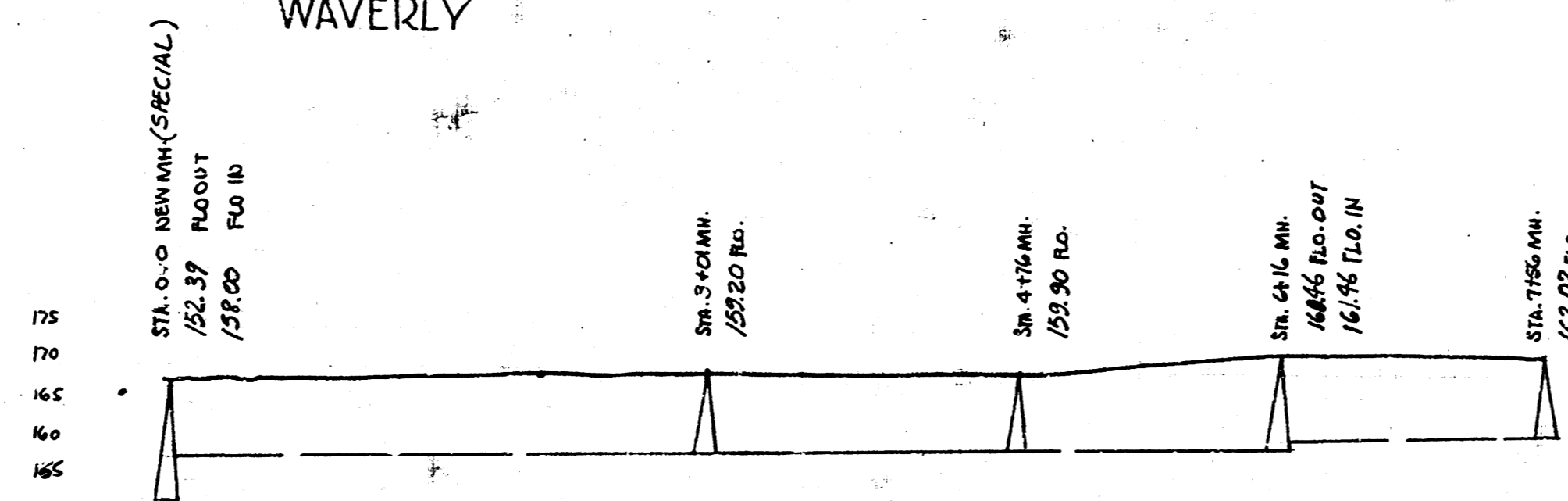
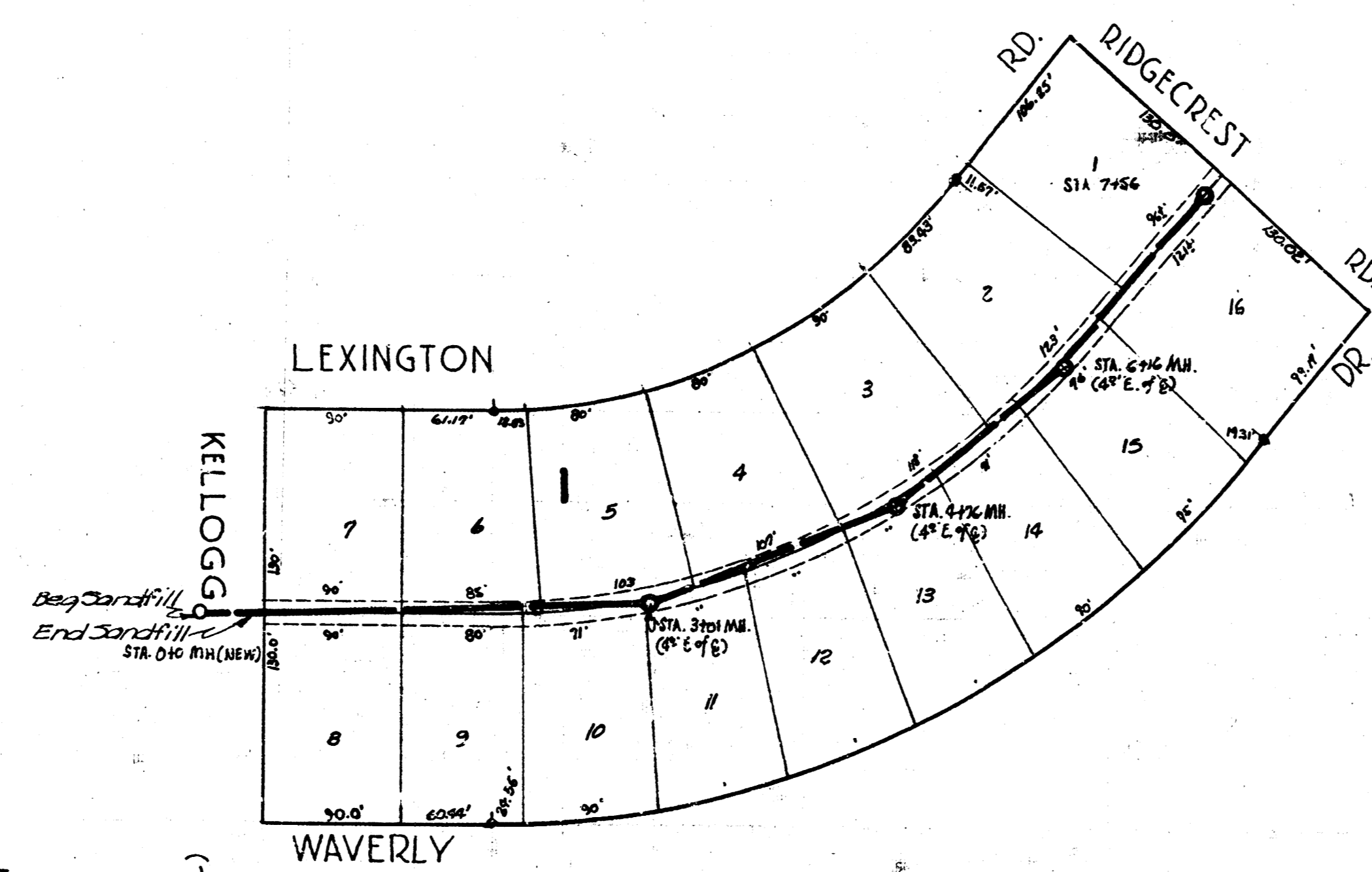
B.M. 170.19 R.R. SPIKE NS. POWERPOLE - 150' W. OF WL. WAVERLY N. - NS. KELLOGG



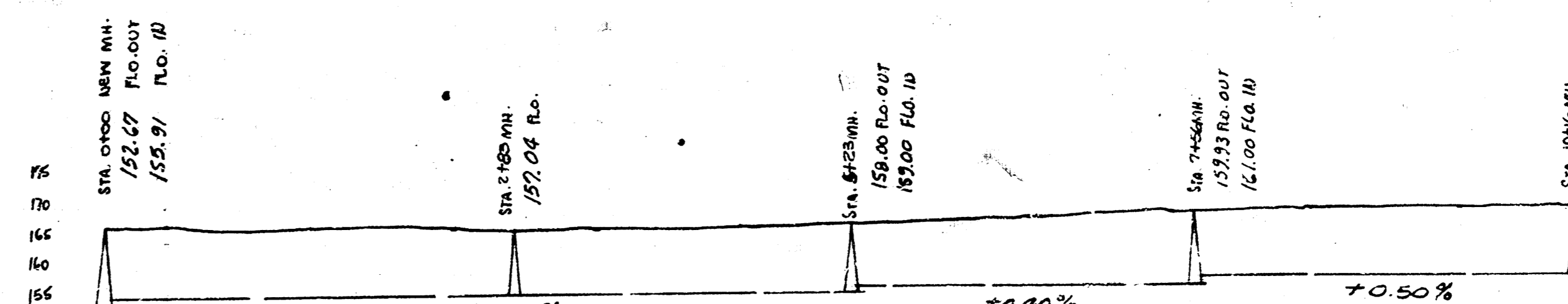
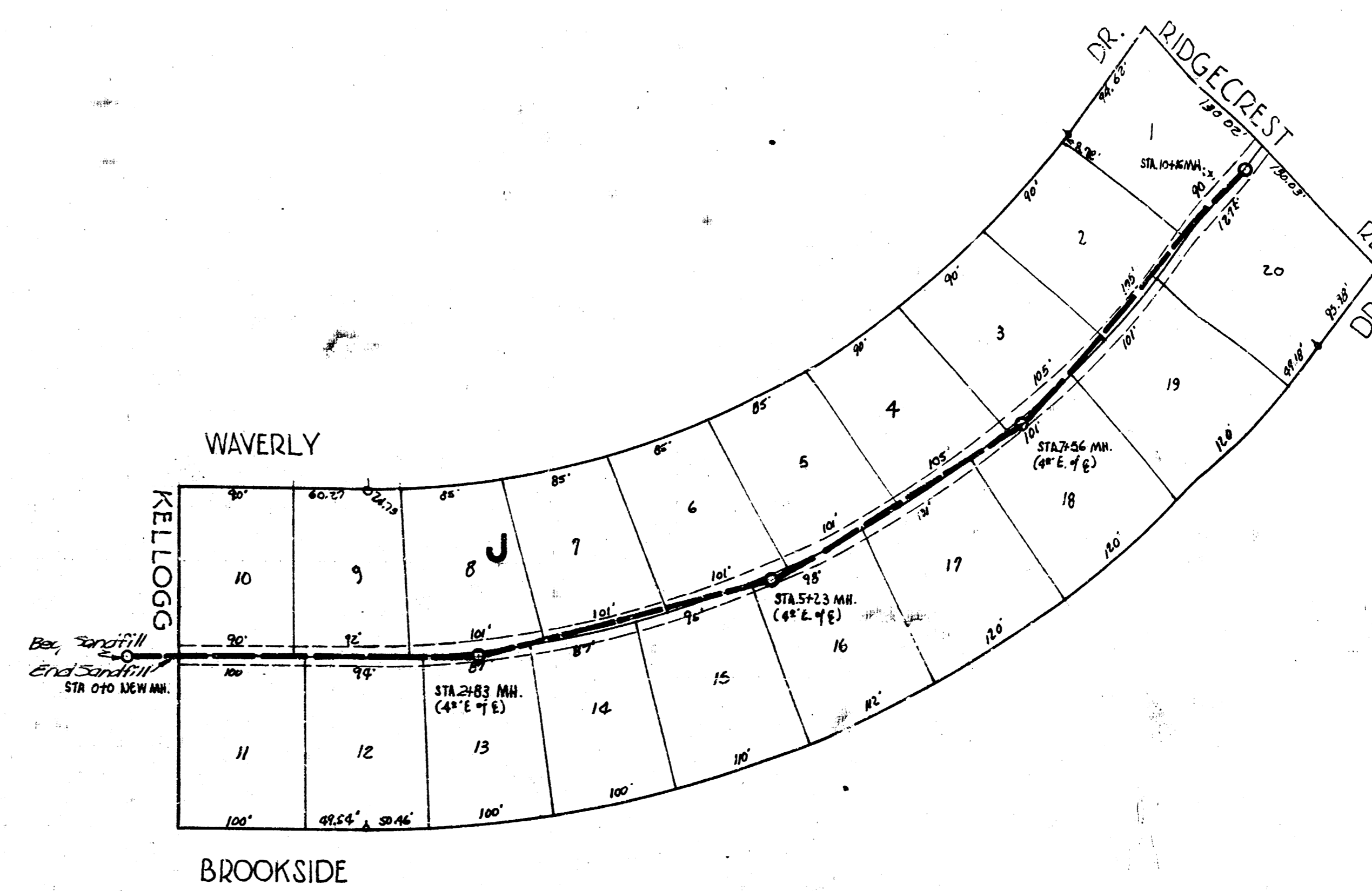
FOR DETAIL OF SPECIAL MANHOLE SEE SH. 3/3.



LINE 1
8" V.C.R. 10.40%



LINE 2
8" V.C.R. 10.40%



LINE 3
8" V.C.R.

