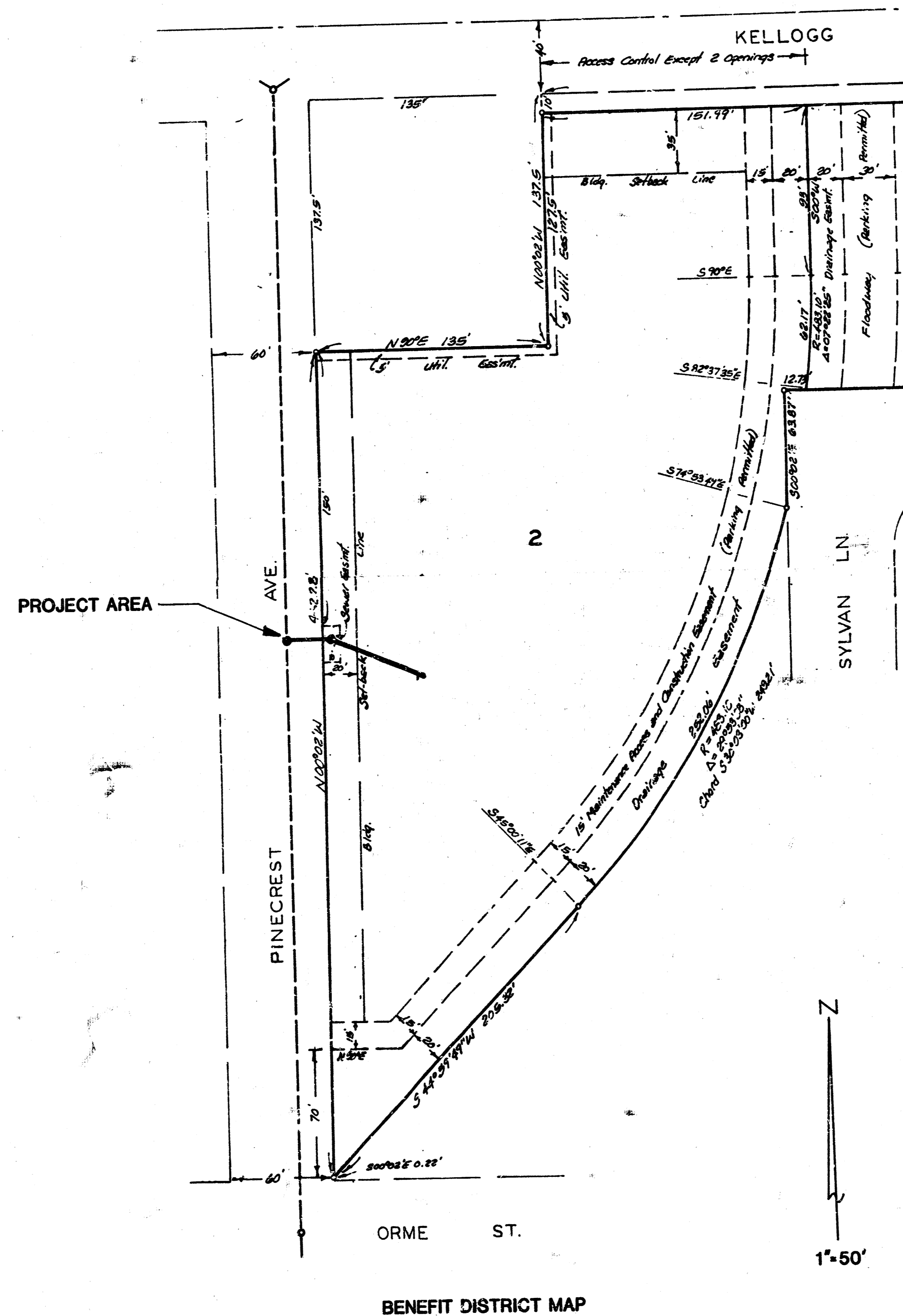


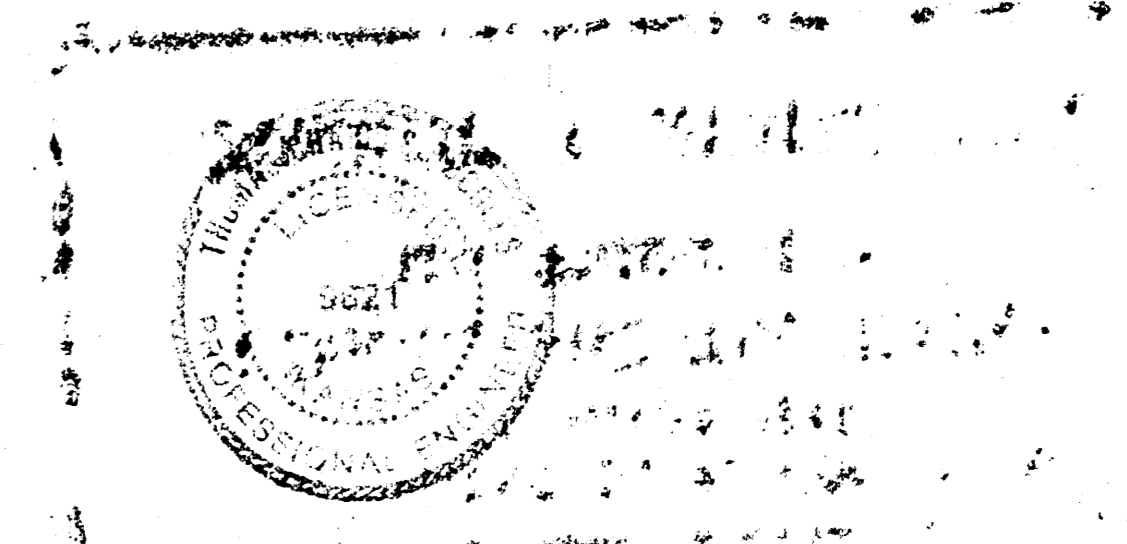
LATERAL 70 MAIN 1 S.S. 12

PROJECT NO. 468-76-245-81449-000-000-001



- NOTES:
1. Contractor shall be responsible for preserving property irons. Any irons disturbed as a result of his operations shall be re-established at the contractor's expense. Any such work shall be performed by a licensed surveyor or professional engineer.
 2. The contractor shall contact the utilities prior to any excavation to determine the location of existing or future underground utilities in the project area.

CITY OF WICHITA, KANSAS
 MICHAEL E. LINDEBAK
 CITY ENGINEER

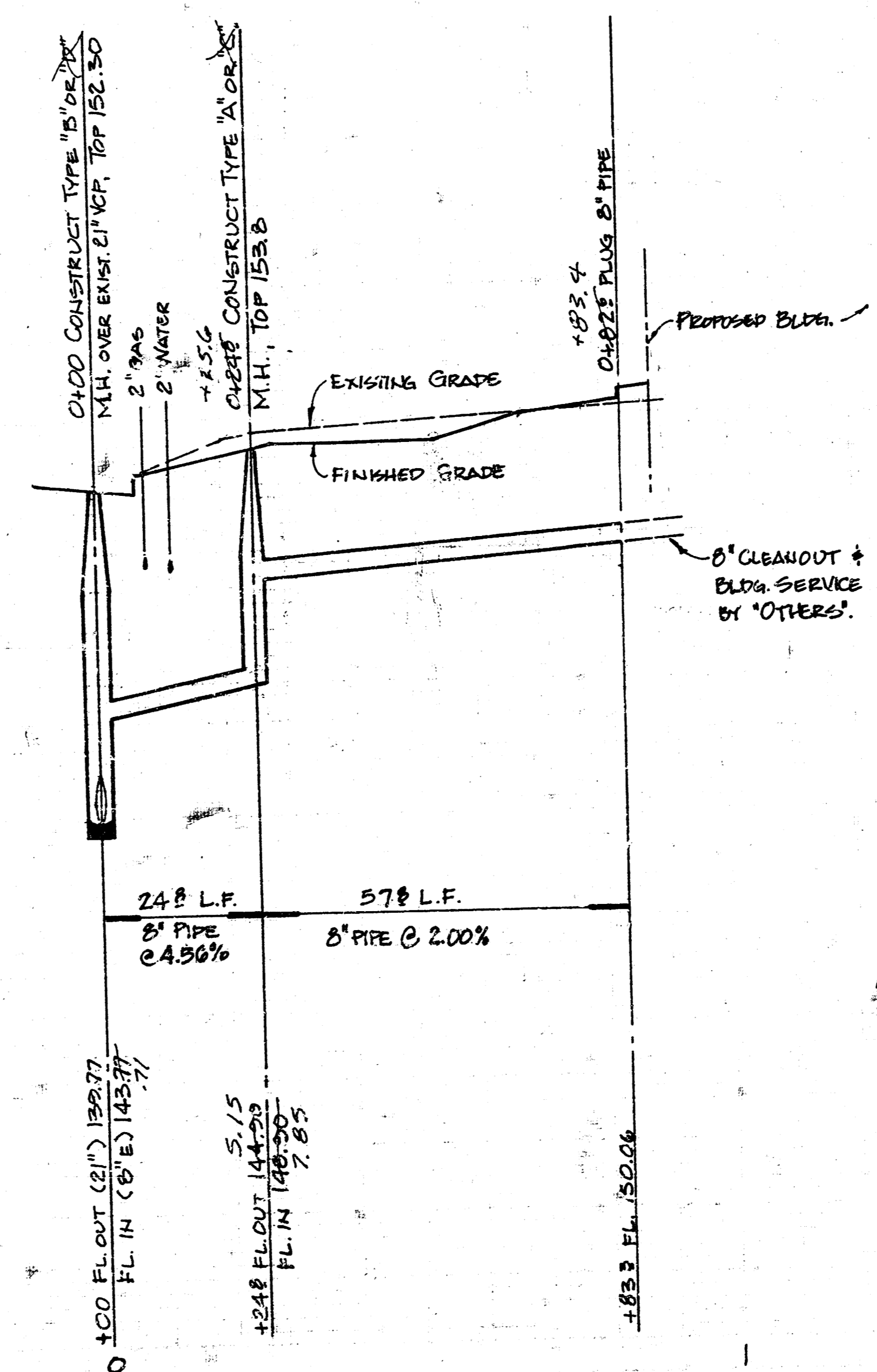
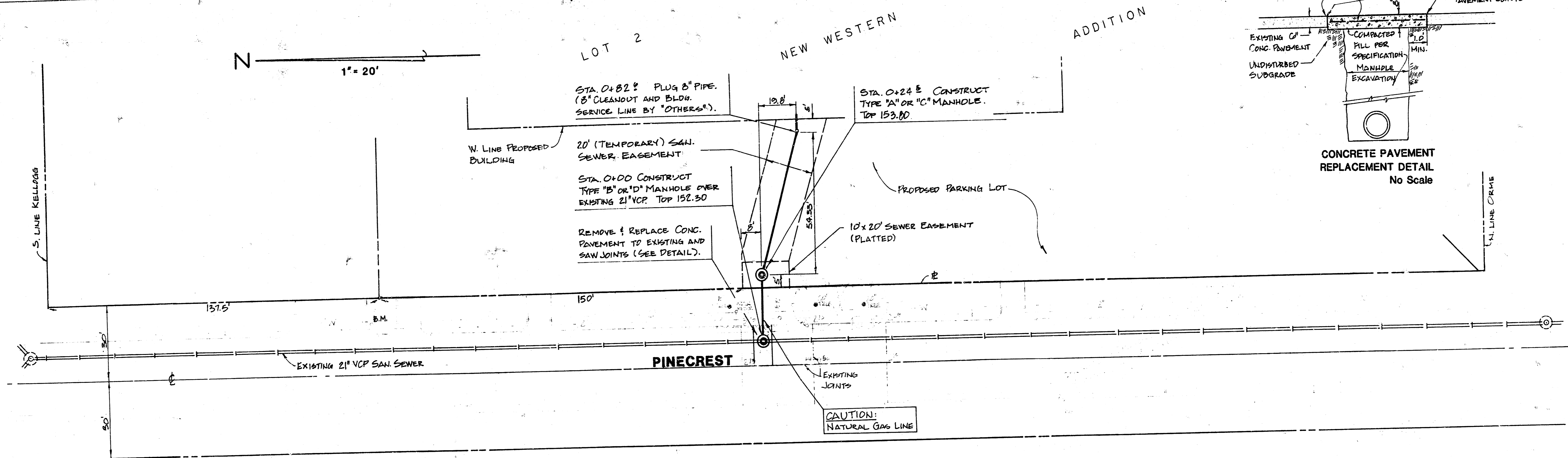


BAUGHMAN COMPANY, P.A.
 SURVEYING & ENGINEERING
 316/262-7271 • 330 LAURA • WICHITA, KANSAS 67211

FEBRUARY 1986

FILMED FROM THE BEST AVAILABLE COPY

B.M. - R.R. SPIKE IN W. FACE POWER POLE
132' S. OF S. LINE KELLOGG & 10' W. OF E. LINE
PINECREST, ELEV. 154.33



LATERAL 70, MAIN 1, S.S. 12
NEW WESTERN ADDITION
CITY OF WICHITA, KANSAS
Project number:
488-72-245-81149-000-000-001 2/2

BAUGHMAN COMPANY, P.A.
SURVEYING & ENGINEERING
316/263-7271 • 300 LAURA • WICHITA, KANSAS 67211 2/2

FILMED FROM THE BEST
AVAILABLE COPY