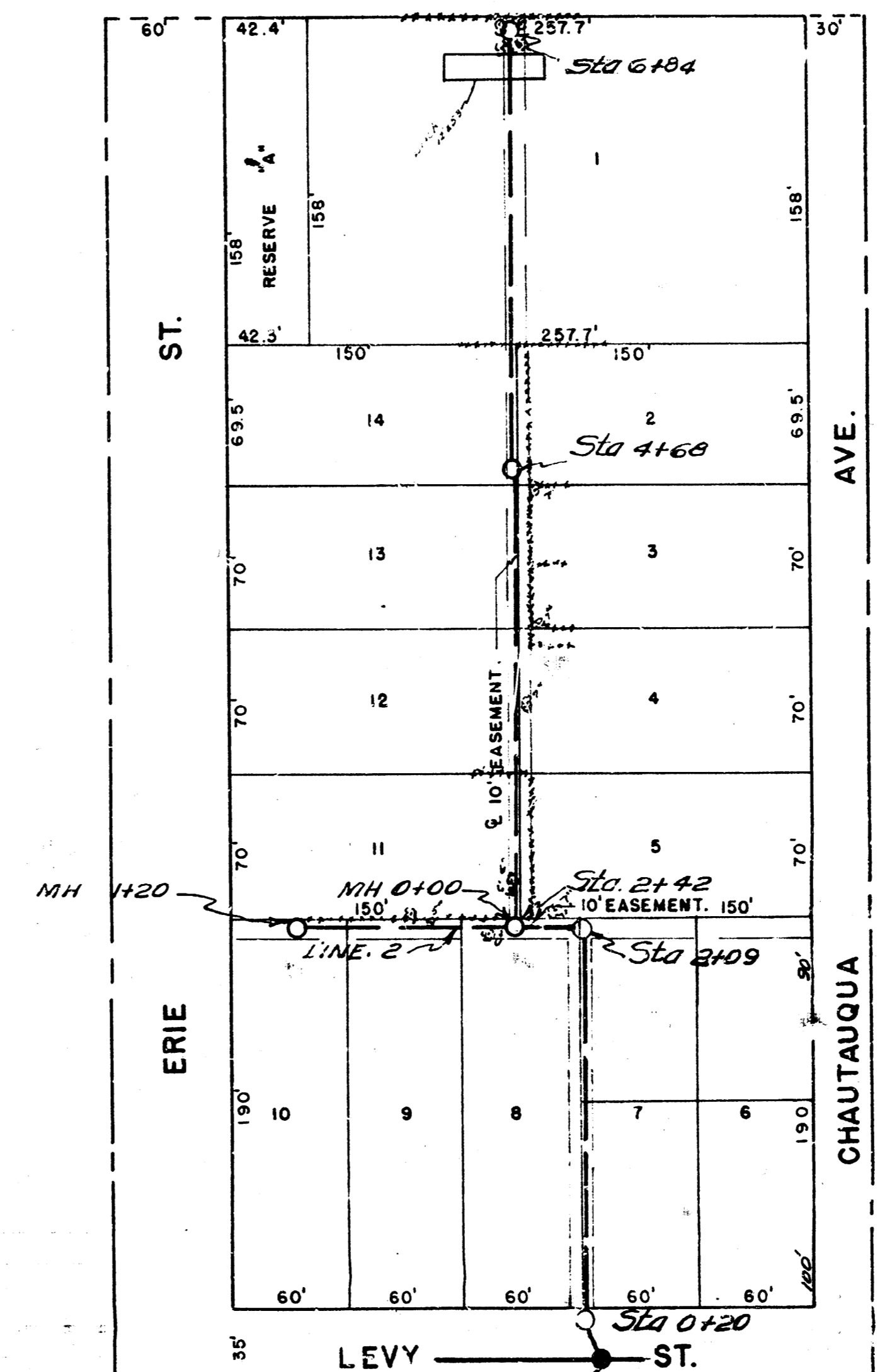
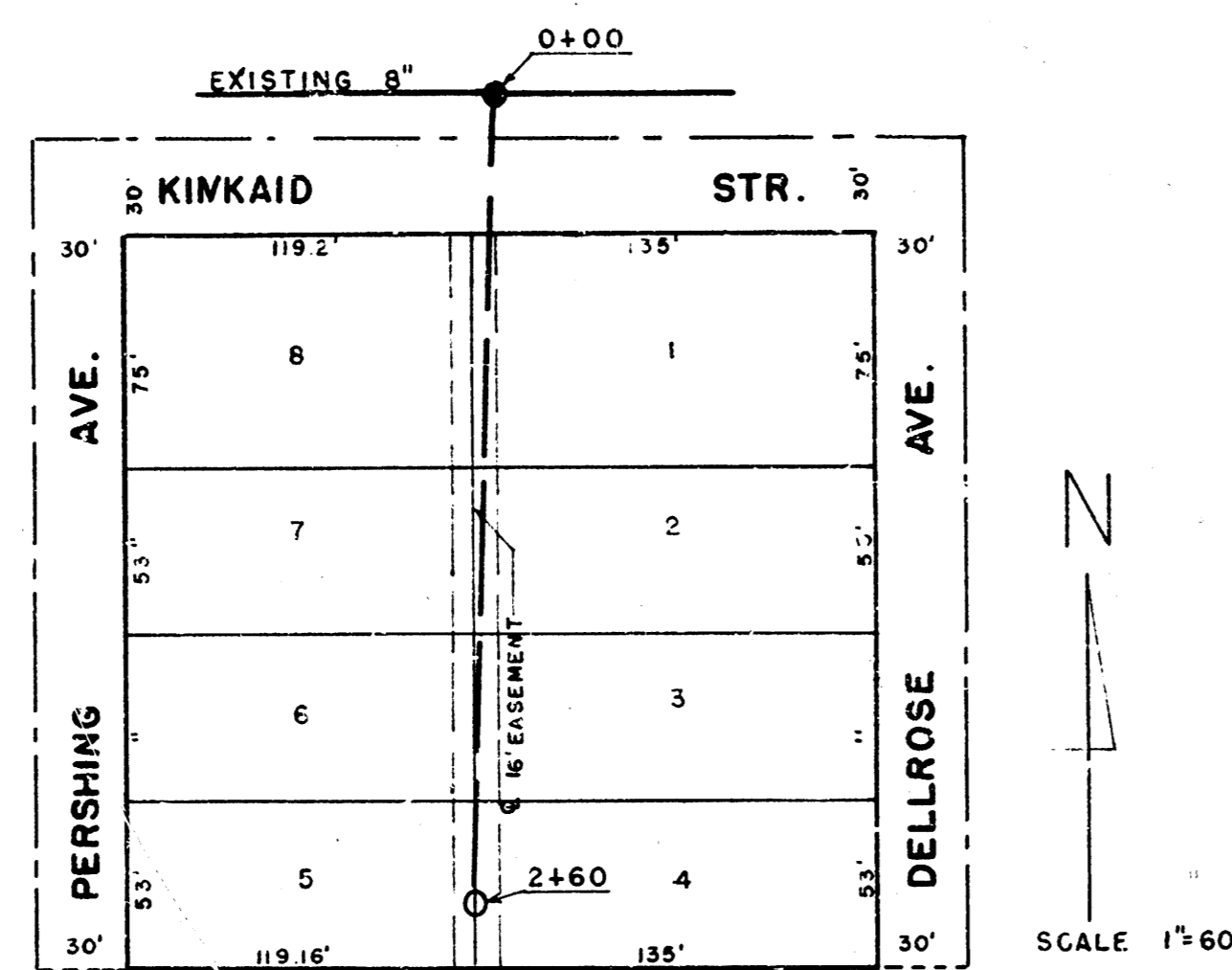
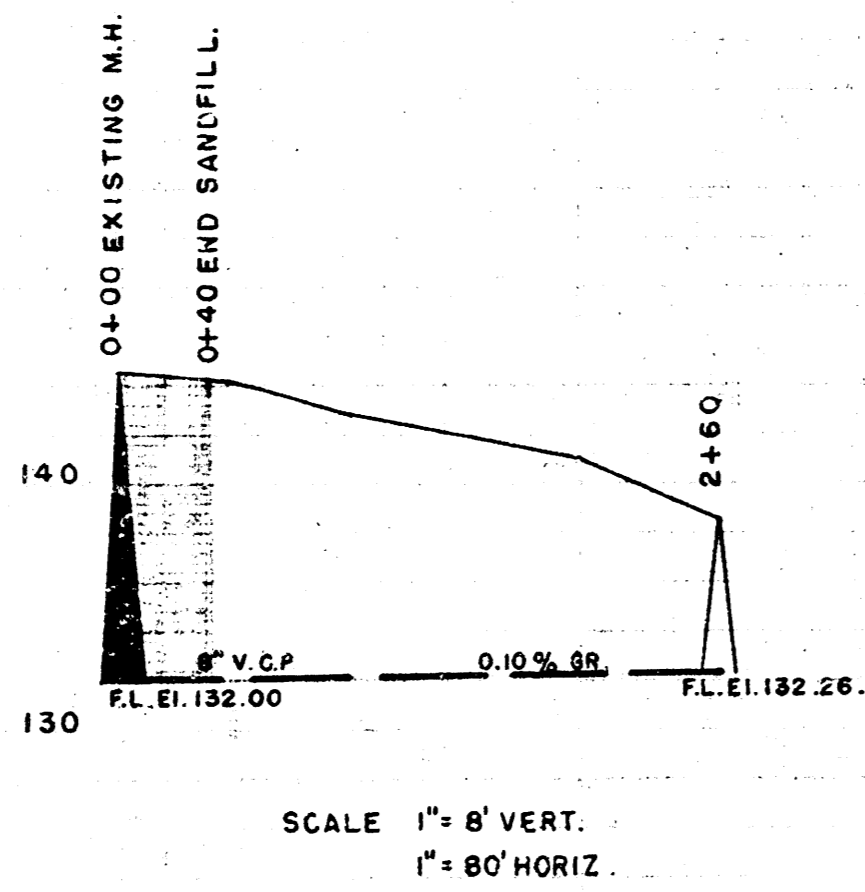


CEDERDALE ADDITION

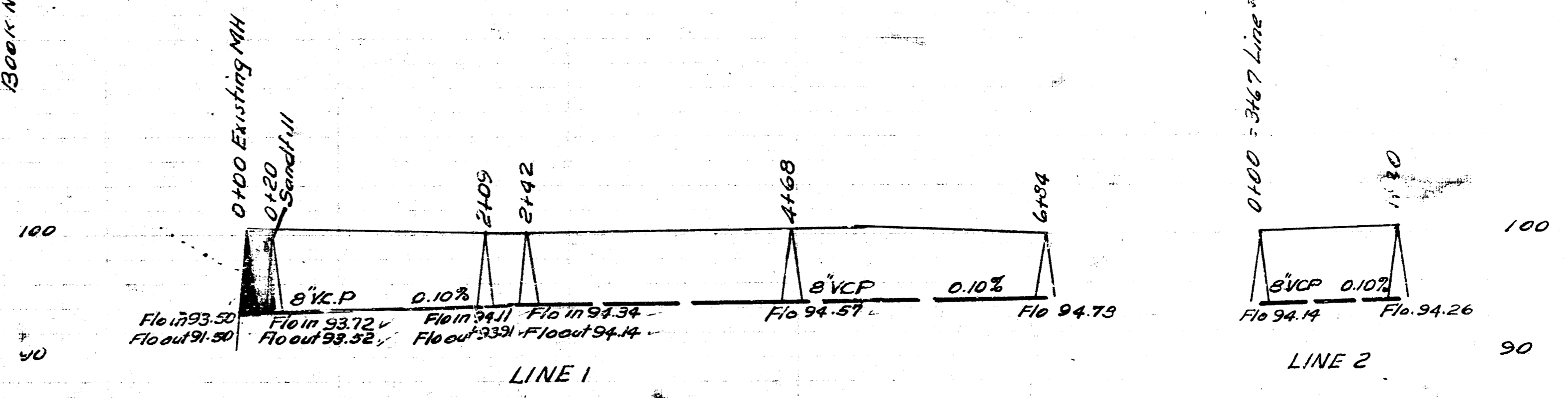


B.M. 144.55 NO. RIM M.H. 0+00



Date 6-26-52
 Drawn by L. McCall
 Checked by B. Lee No. 621-1124

0+00 Existing MH over 24" sewer
 B.M. 144.72 Head to spike SW side Bell Tel. pole
 No 3000 NE Corner Chautauqua & Levy.



Note- Trench shall be hand dug through
 brick building Near Sta 6+00

4-9-52
 L.M.C.
 DATE
 DRAWN BY
 CHECKED BY
 800 R. 100

LAT. 62. D.C. MAIN 12.
 CITY OF WICHITA KANSAS
 L.K. WHITE CITY ENGINEER
 PROJ. NO. C-22-8.

LAT. 12. D.C. 2 MAIN 12.
 CITY OF WICHITA KANSAS
 L.K. WHITE CITY ENGINEER.
 PROJ. NO. C-22-27

