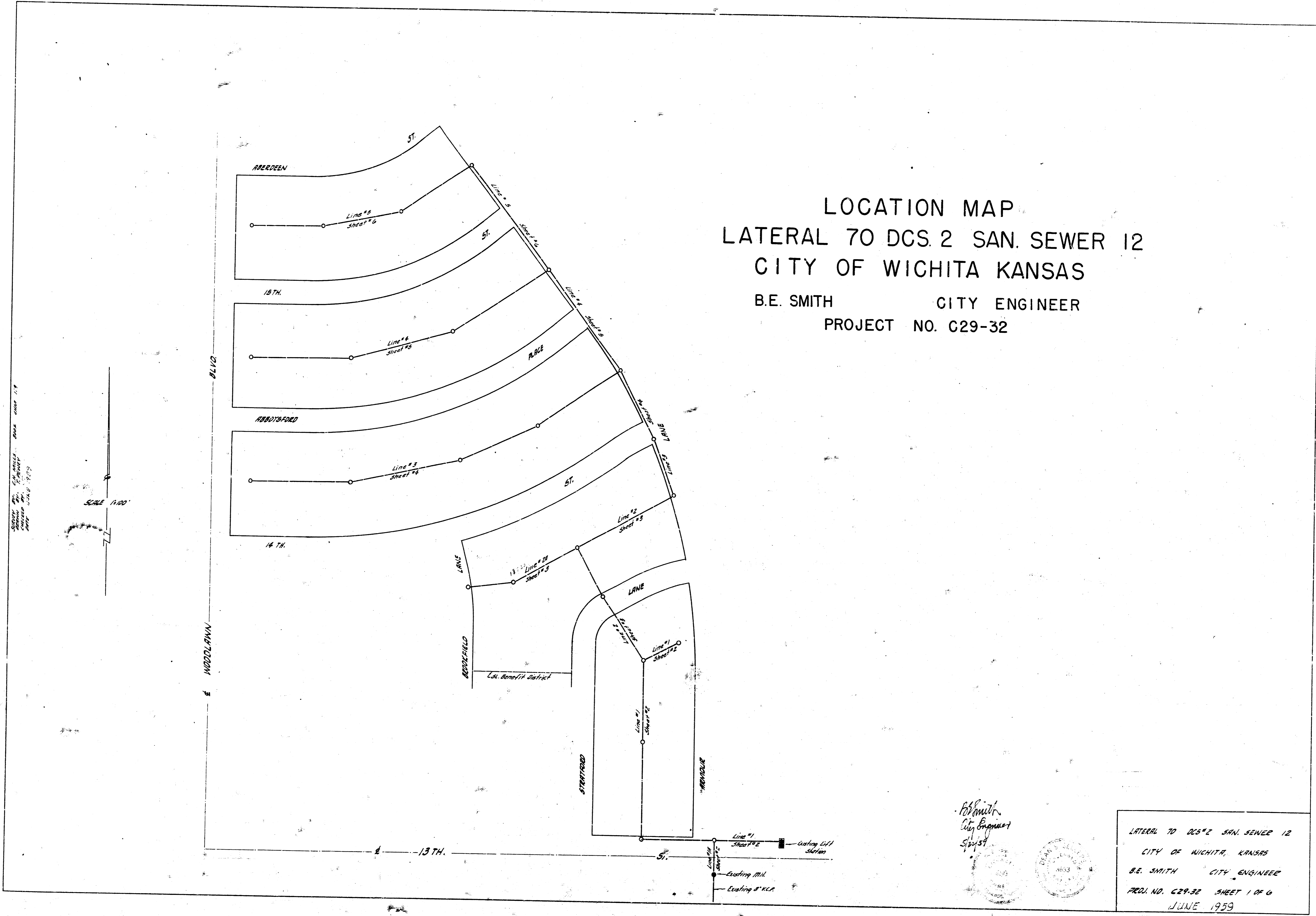


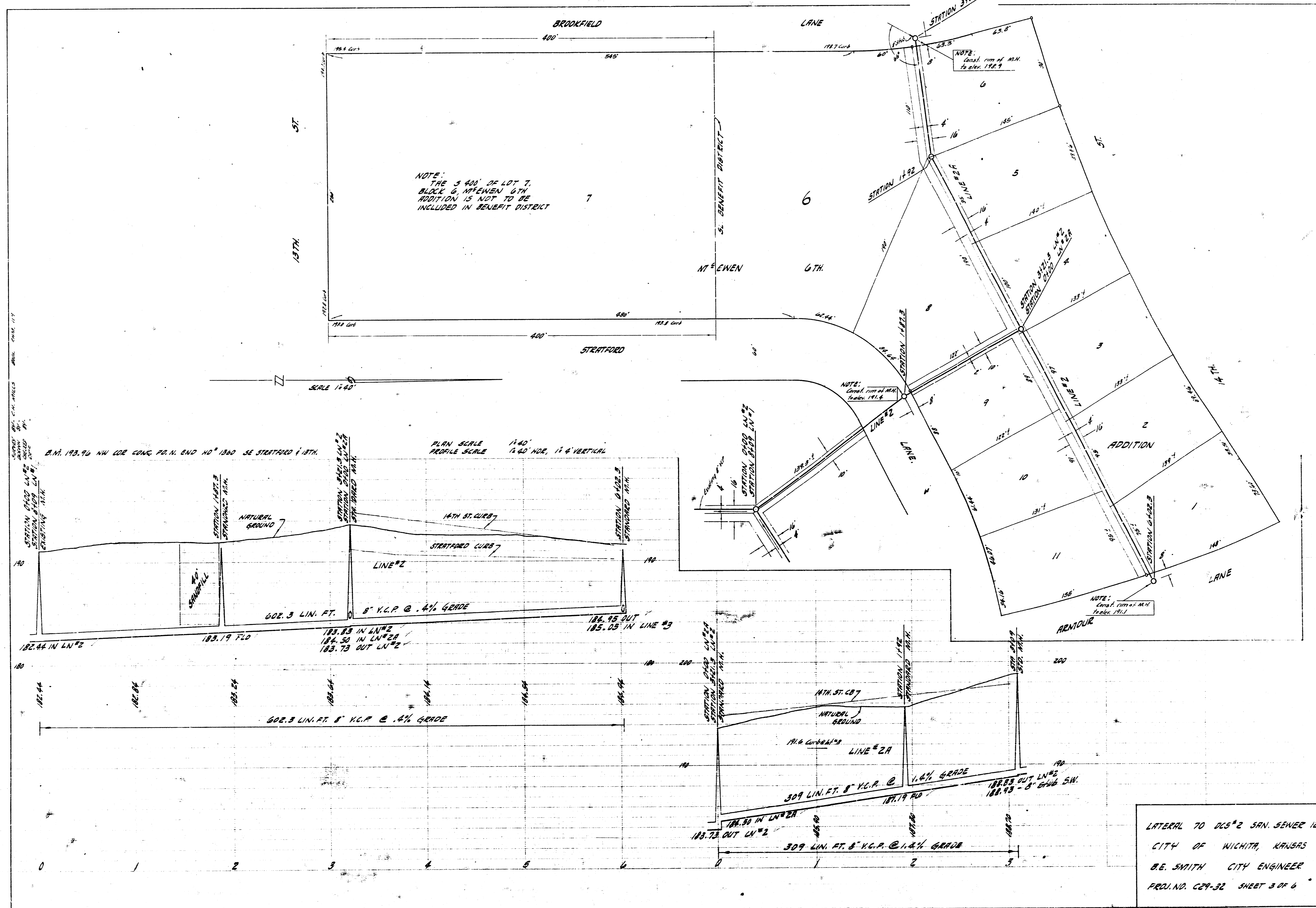
LOCATION MAP
 LATERAL TO DCS. 2 SAN. SEWER 12
 CITY OF WICHITA KANSAS

B.E. SMITH CITY ENGINEER
 PROJECT NO. C29-32



B.E. Smith
 City Engineer
 5/21/59

LATERAL TO DCS. 2 SAN. SEWER 12
 CITY OF WICHITA, KANSAS
 B.E. SMITH CITY ENGINEER
 PROJ. NO. C29-32 SHEET 1 OF 6
 JUNE 1959



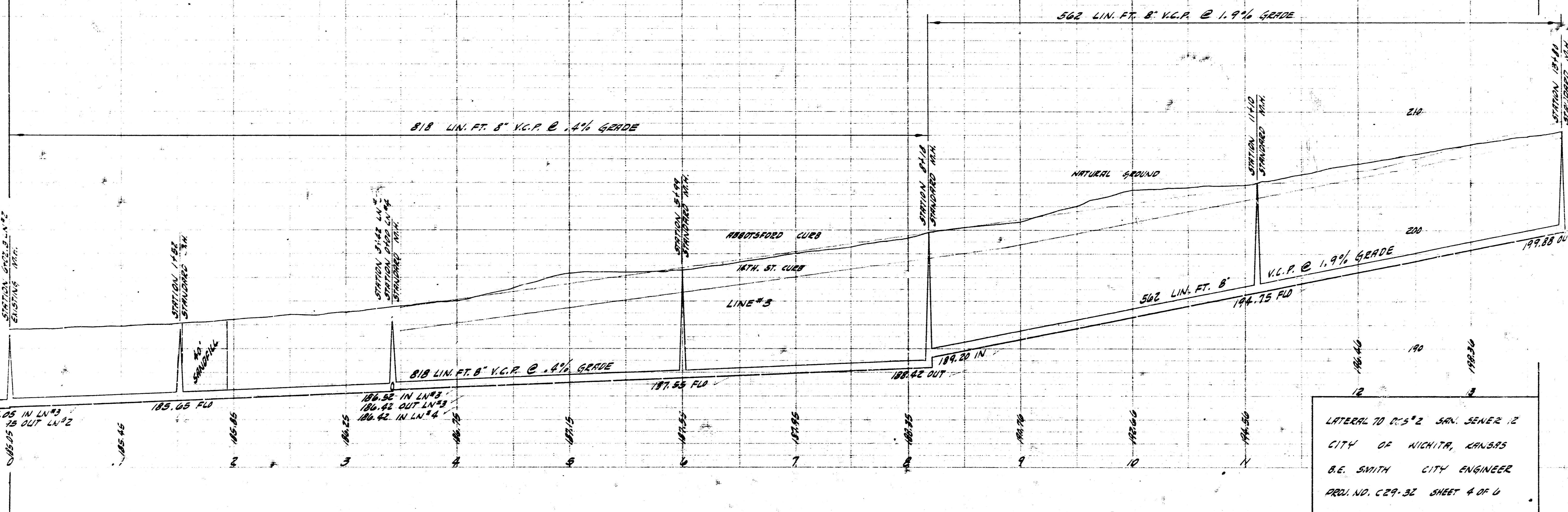
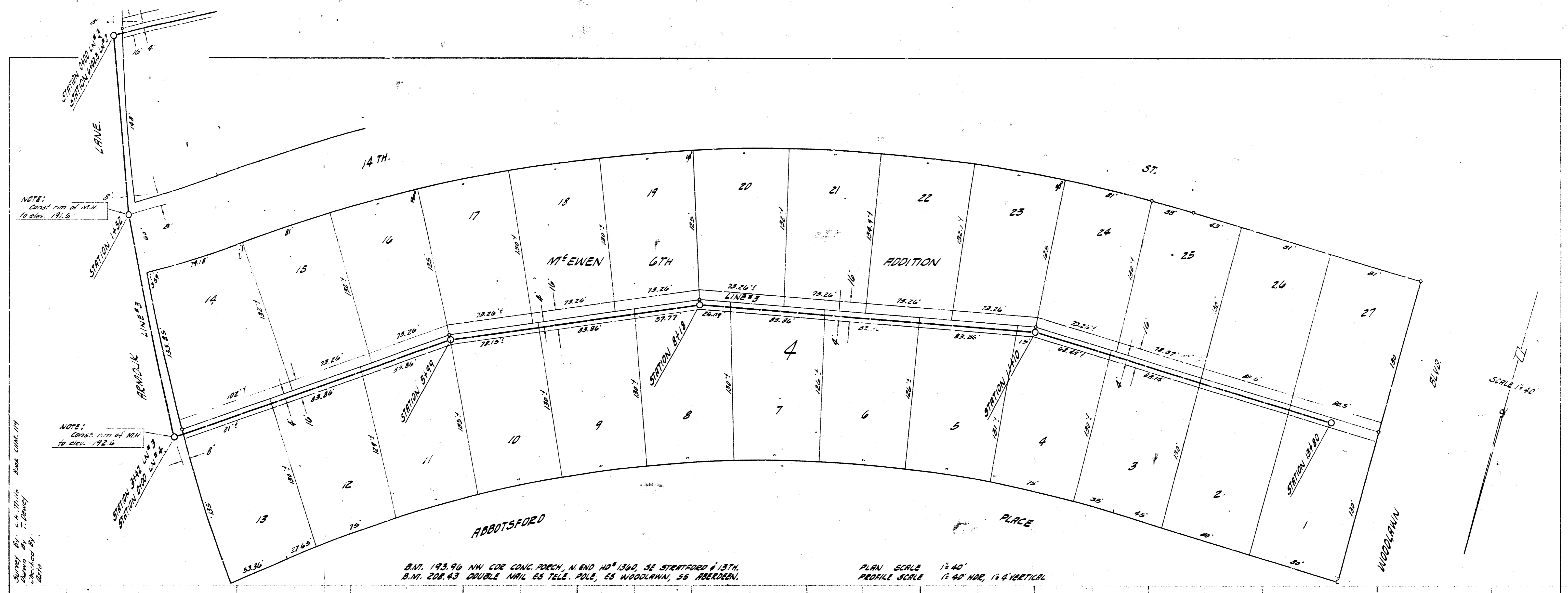
NOTE:
THE 3' 400' OF LOT 7,
BLOCK 6, WILMINGTON 6TH
ADDITION IS NOT TO BE
INCLUDED IN BENEFIT DISTRICT

NOTE:
Const. from M.H.
to elev. 192.9

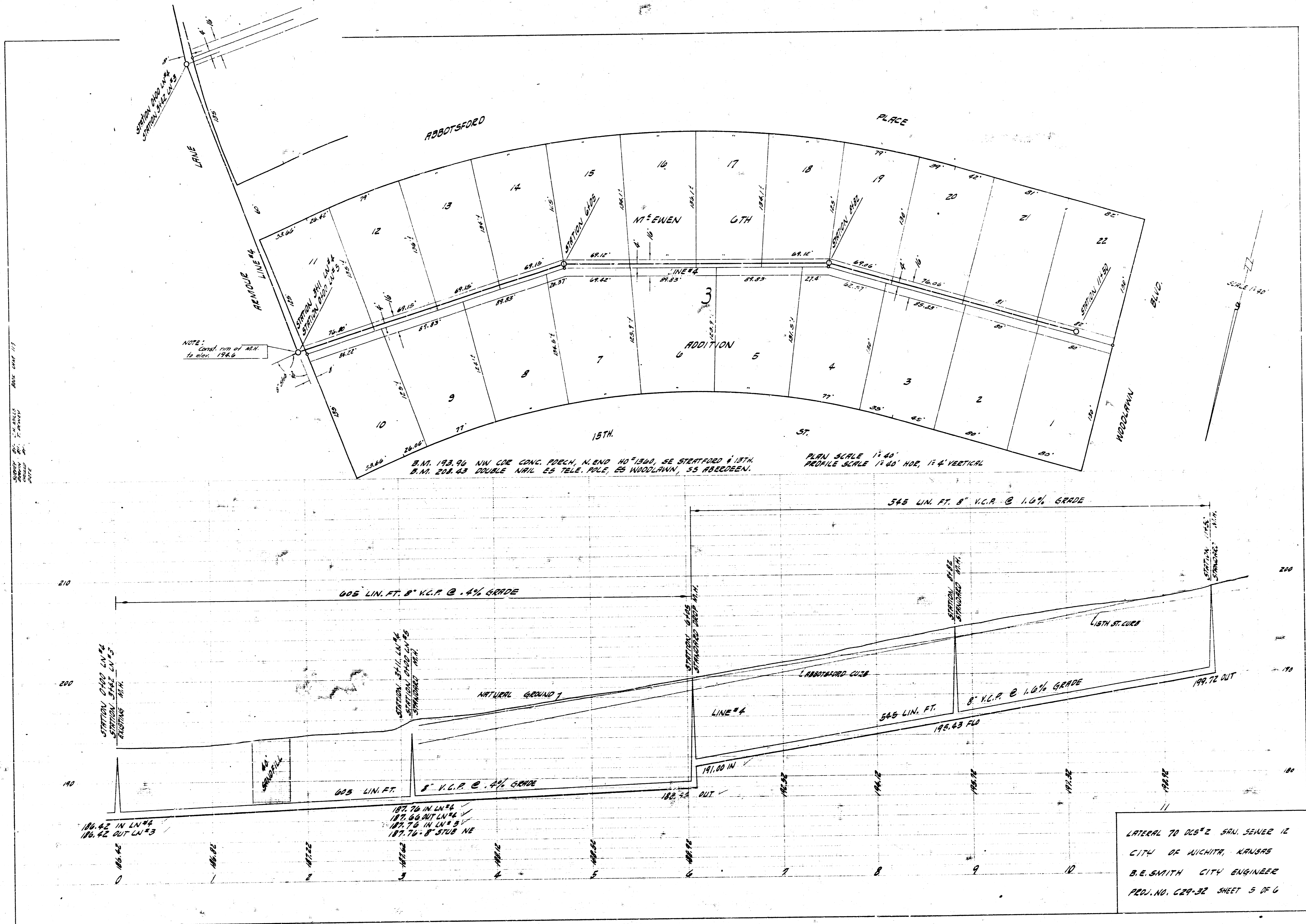
NOTE:
Const. from M.H.
to elev. 191.6

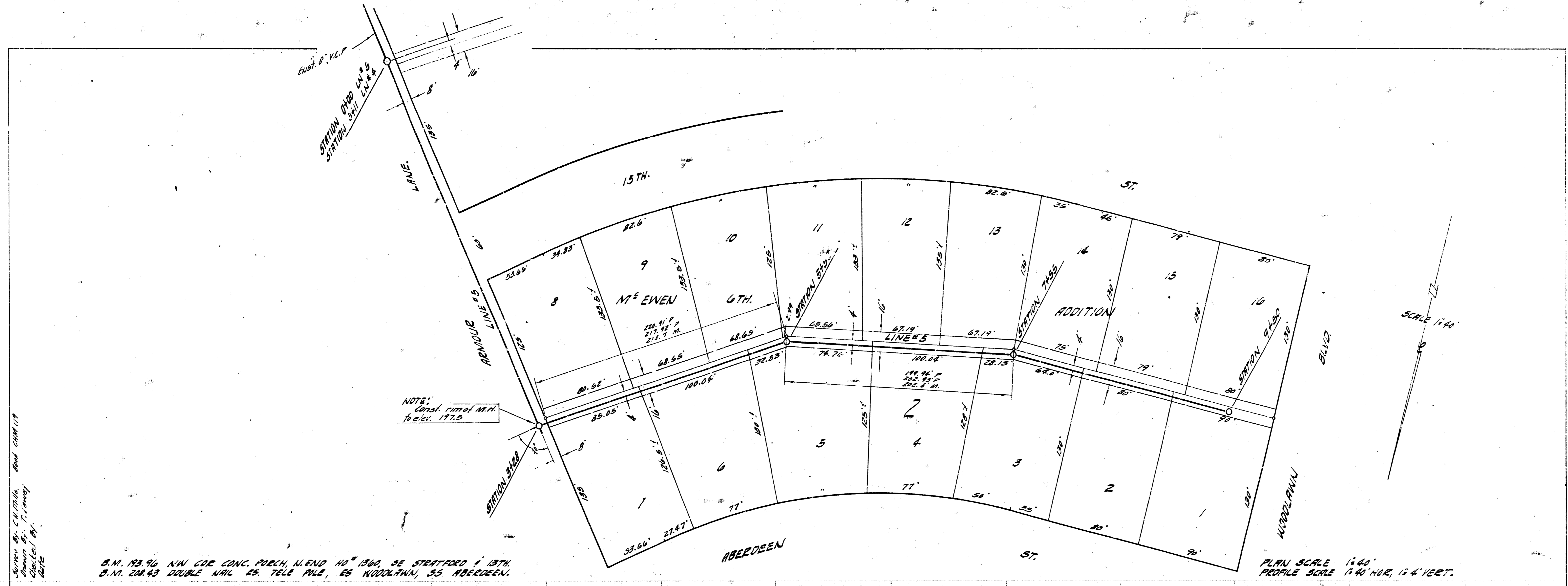
NOTE:
Const. from M.H.
to elev. 191.1

LATERAL TO 605" 2 SAN. SEWER 12
CITY OF WICHITA, KANSAS
B.E. SMITH CITY ENGINEER
PROJ. NO. C29-32 SHEET 3 OF 6



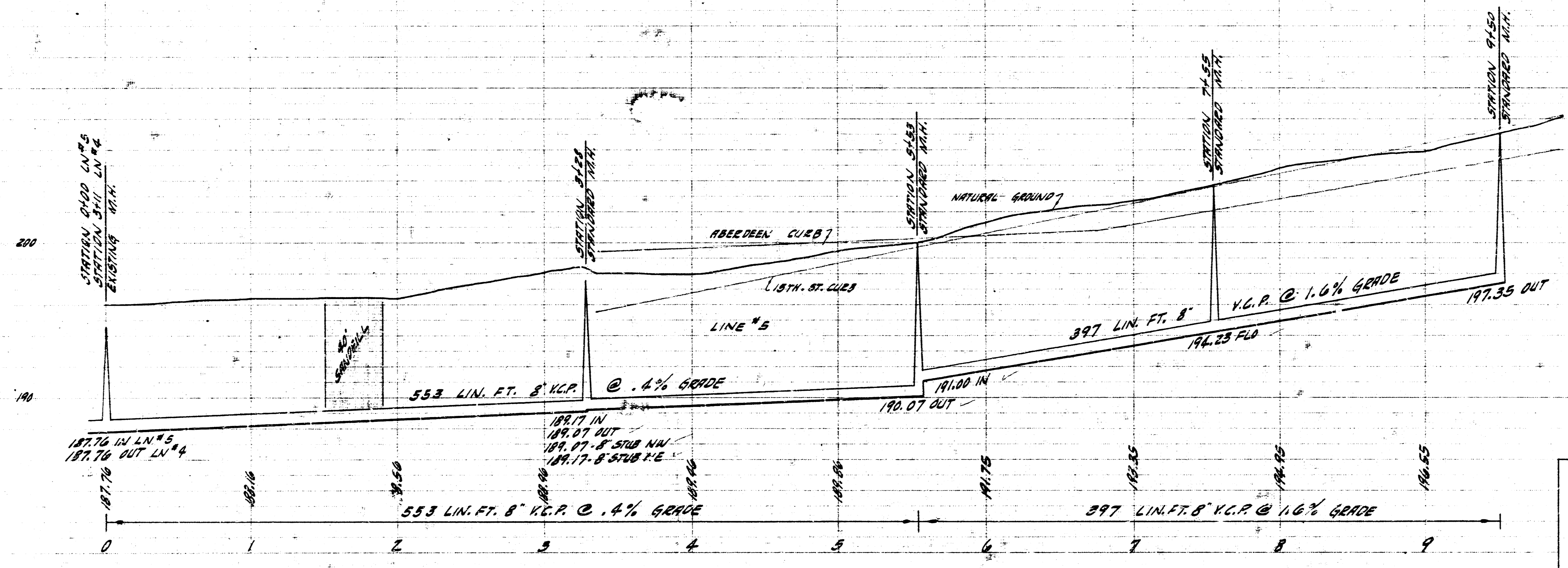
LATERAL TO R.5'2" SRV. SENER 12
 CITY OF WICHITA, KANSAS
 B.E. SMITH CITY ENGINEER
 PROJ. NO. C29-32 SHEET 4 OF 4





Survey by C. Smith and G. H. Smith
Checked by J. H. Smith
Date

S.M. 183.96 NW COR. CONC. PORCH. W. END 10' 1860. SE STRATFORD & 18TH.
S.M. 208.63 DOUBLE NAIL ES. TELE. PILE, ES. WOODLAWN, SE ABERDEEN.



LATERAL TO 12" 2 SAN. SEWER 12
CITY OF WICHITA, KANSAS
B.E. SMITH CITY ENGINEER
PROJ. NO. C29-32 SHEET 6 OF 6