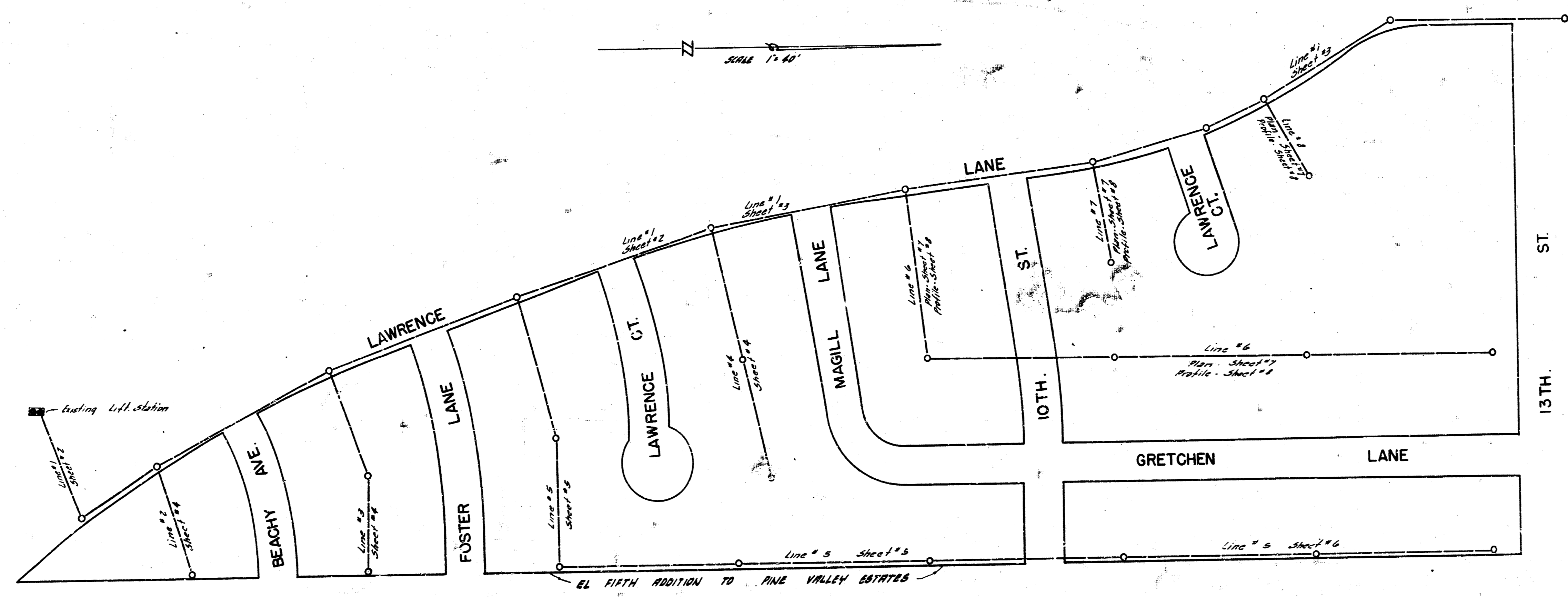


LOCATION MAP  
 LAT. 78 DCS 2 SAN. SEWER 12  
 CITY OF WICHITA, KANSAS  
 BE. SMITH CITY ENGINEER  
 PROJ. NO. C29-79

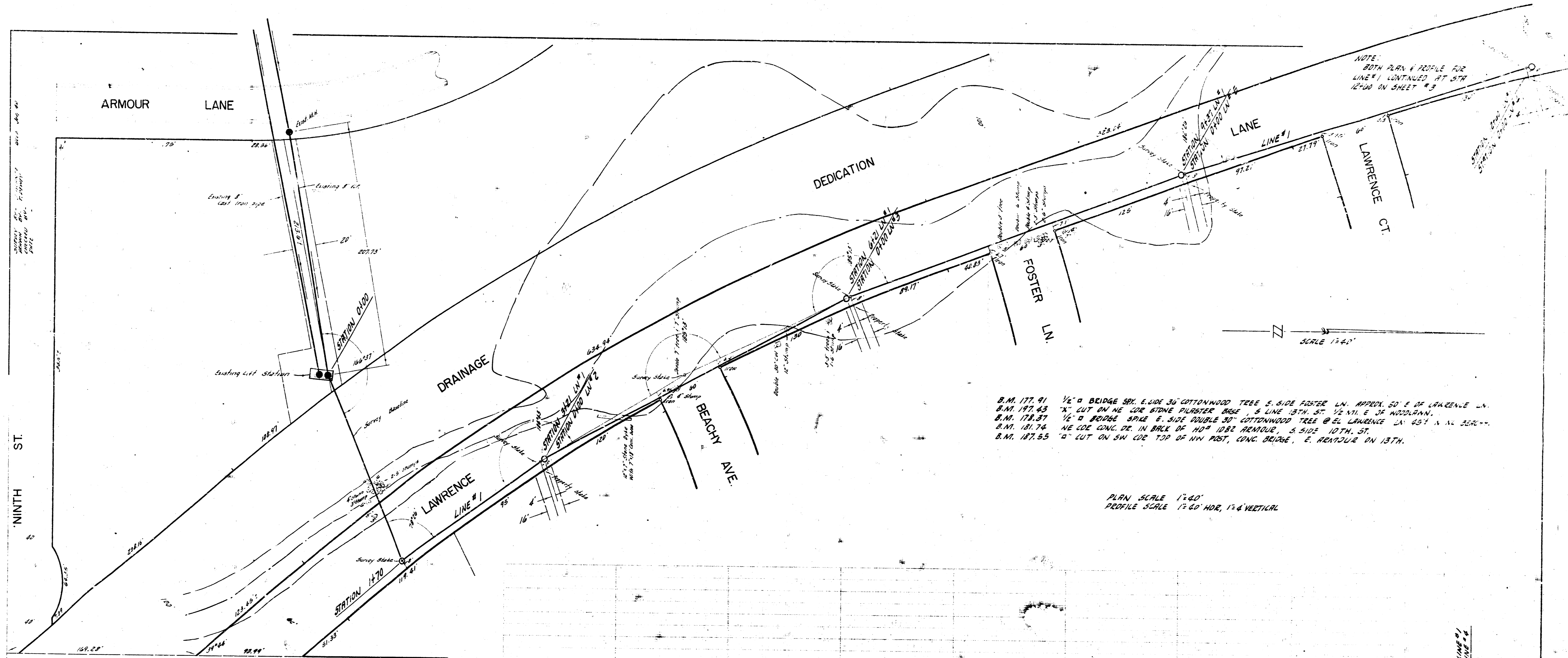


BE. SMITH  
 CITY ENGINEER  
 PROJ. NO. C29-79

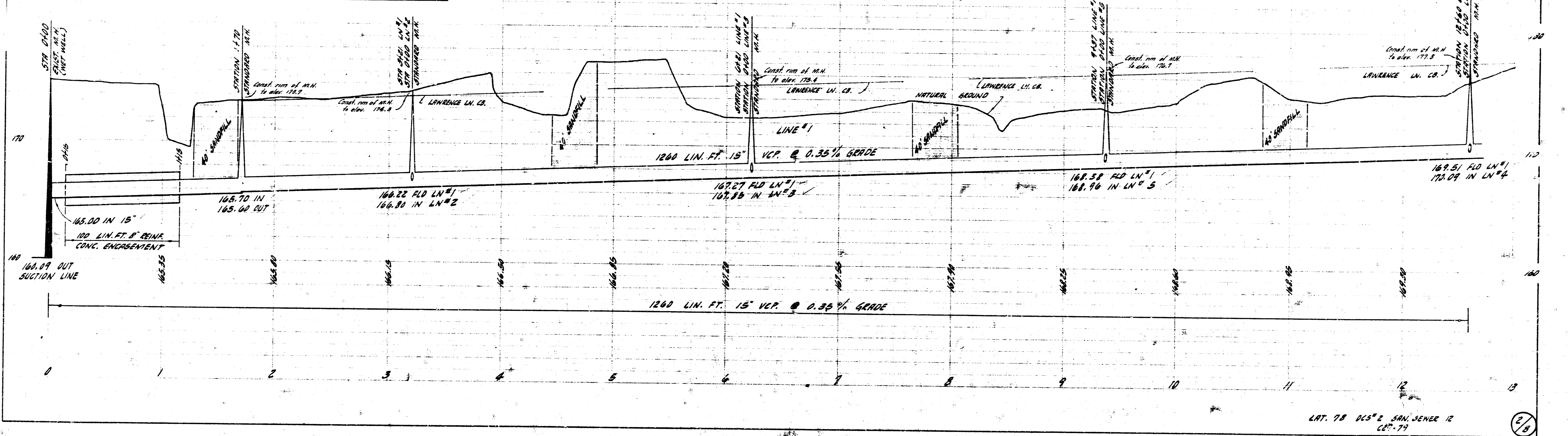


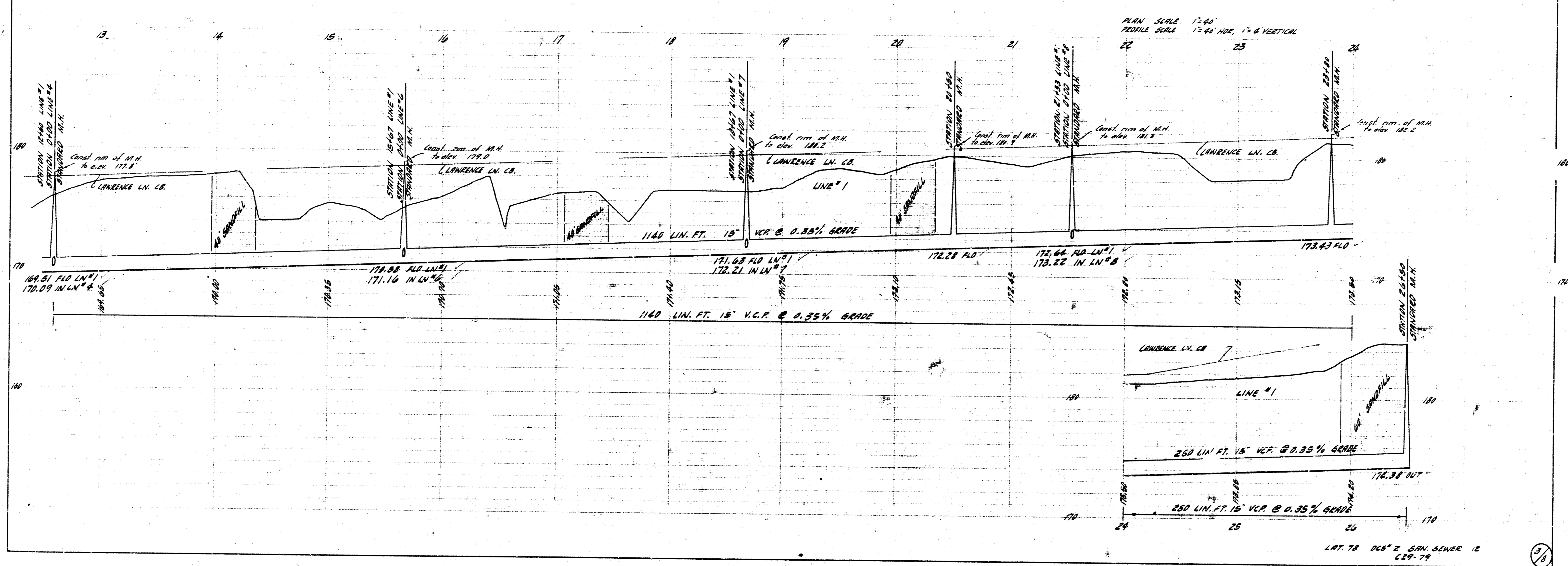
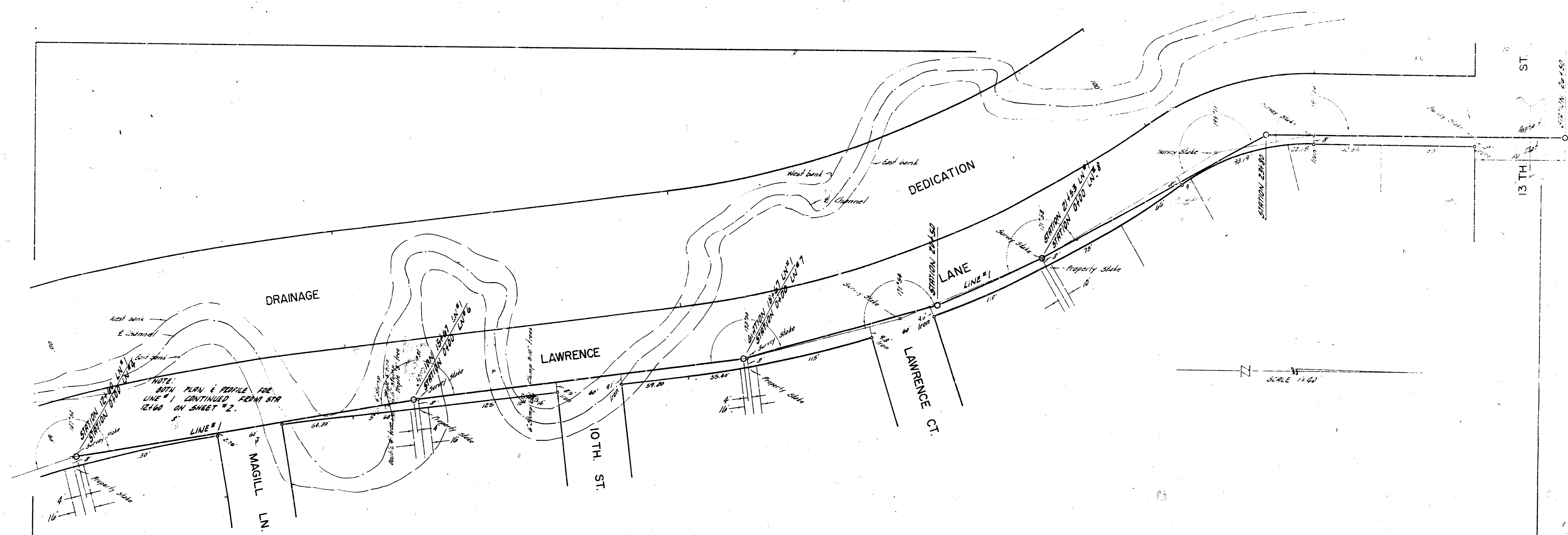
*Be. Smith*  
 BE. SMITH CITY ENGINEER  
 AUG. 3, 1951

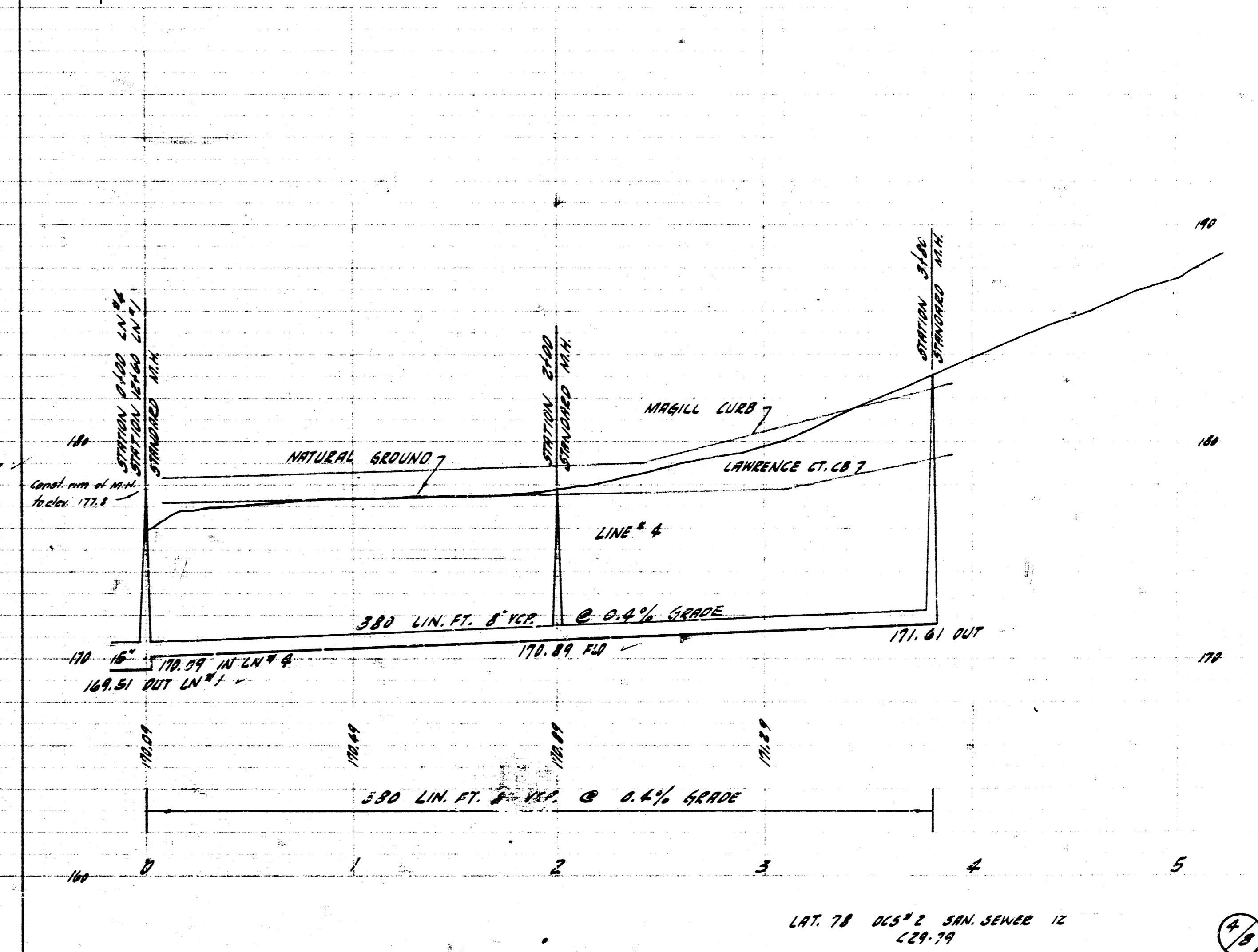
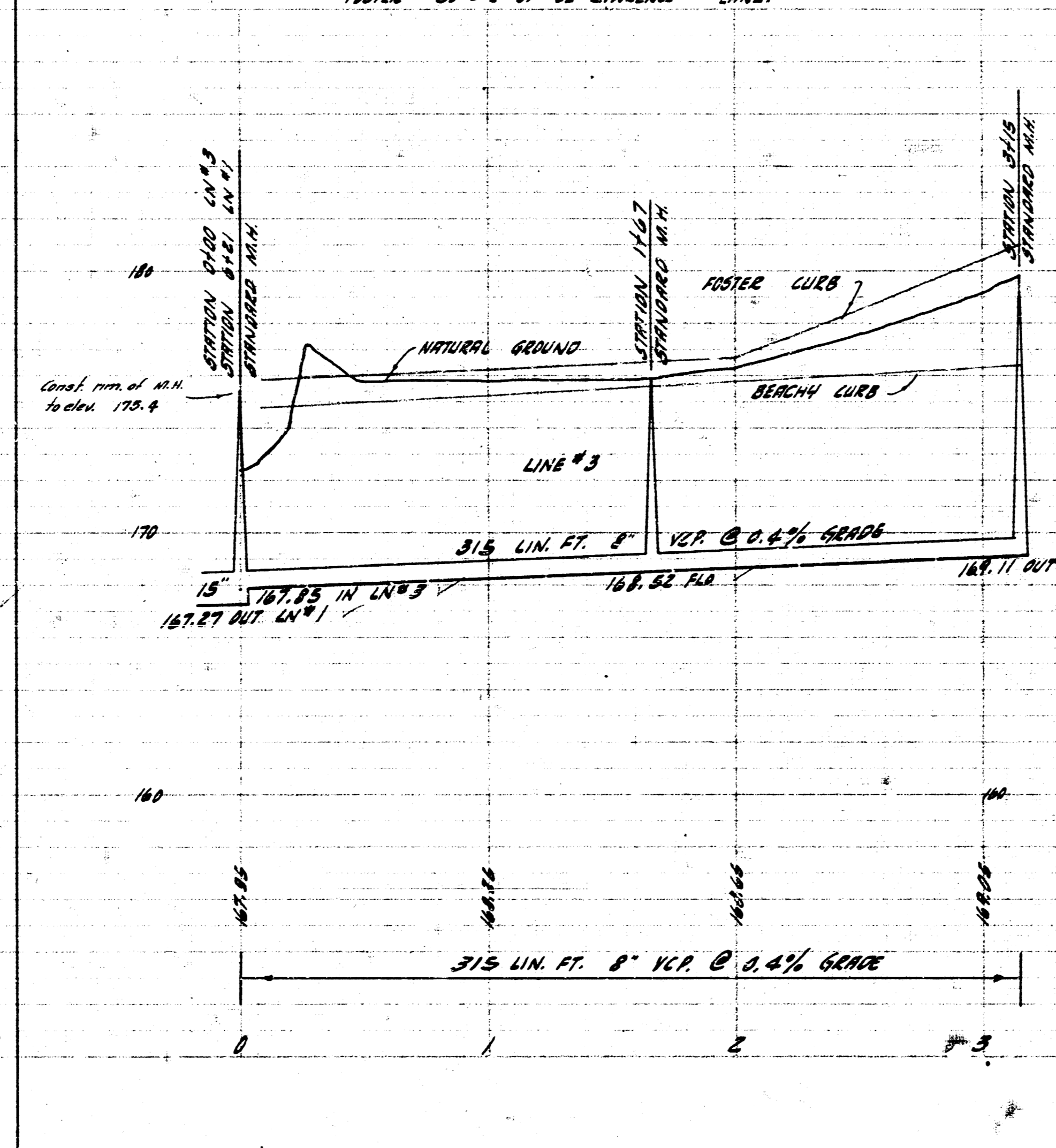
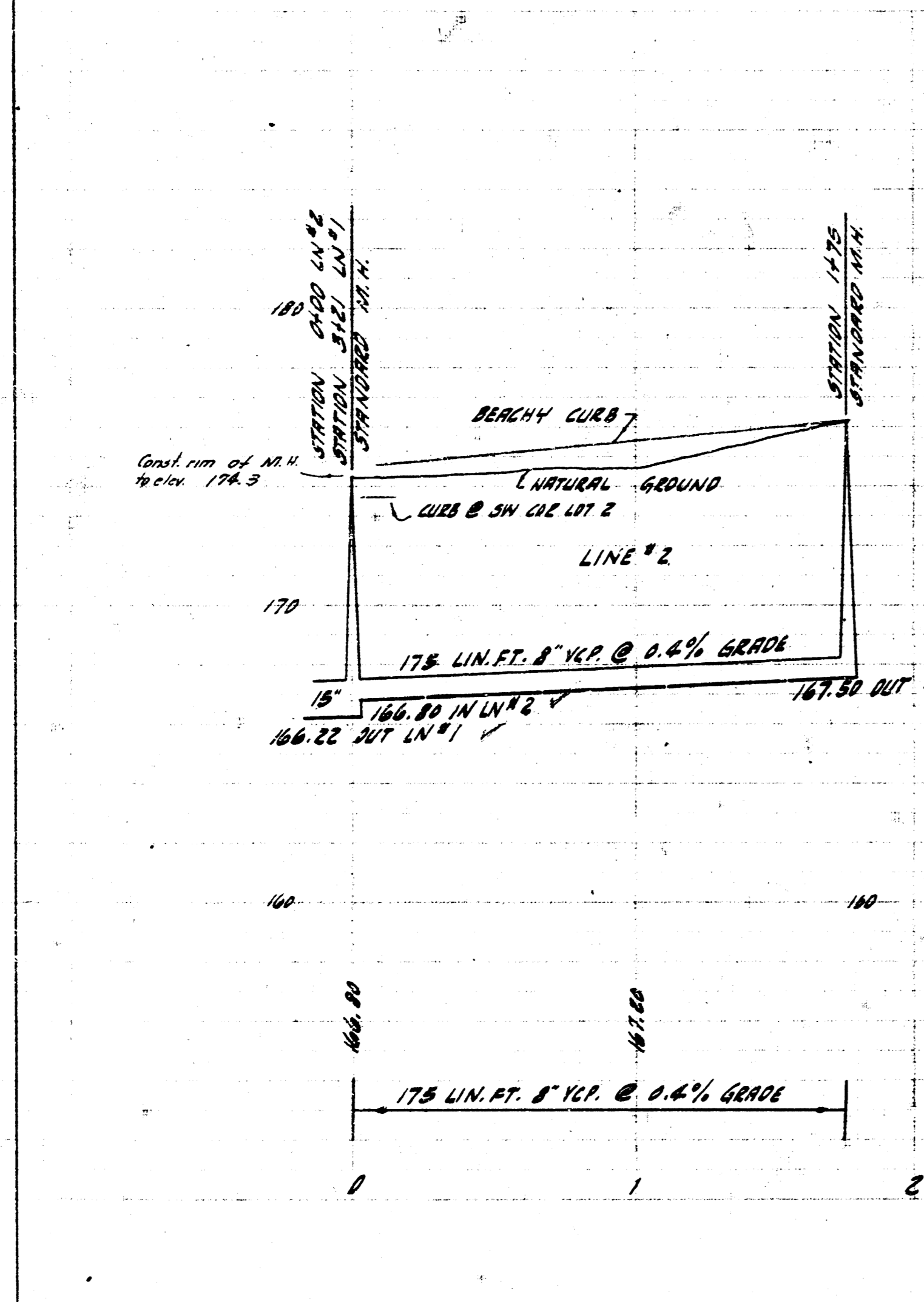
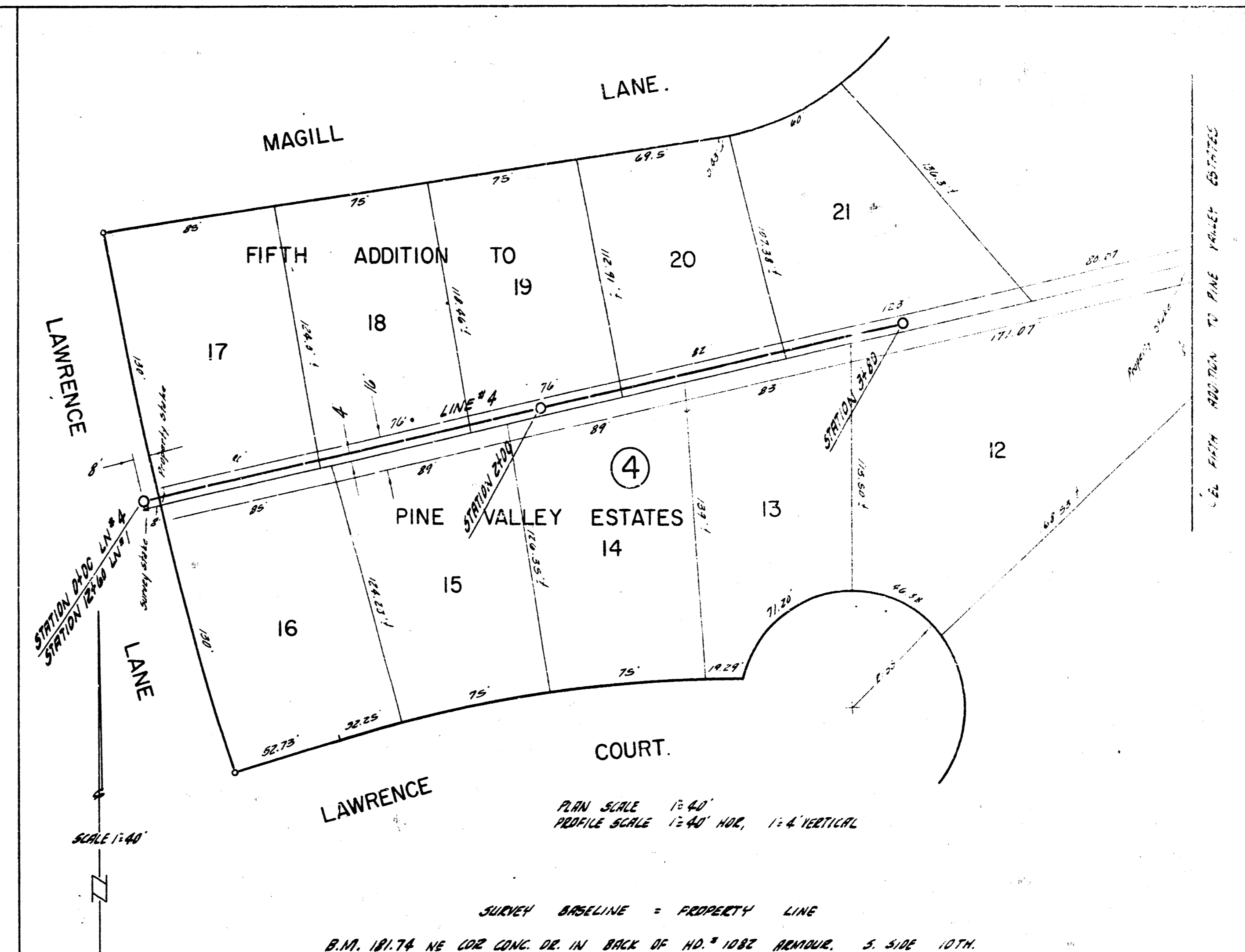
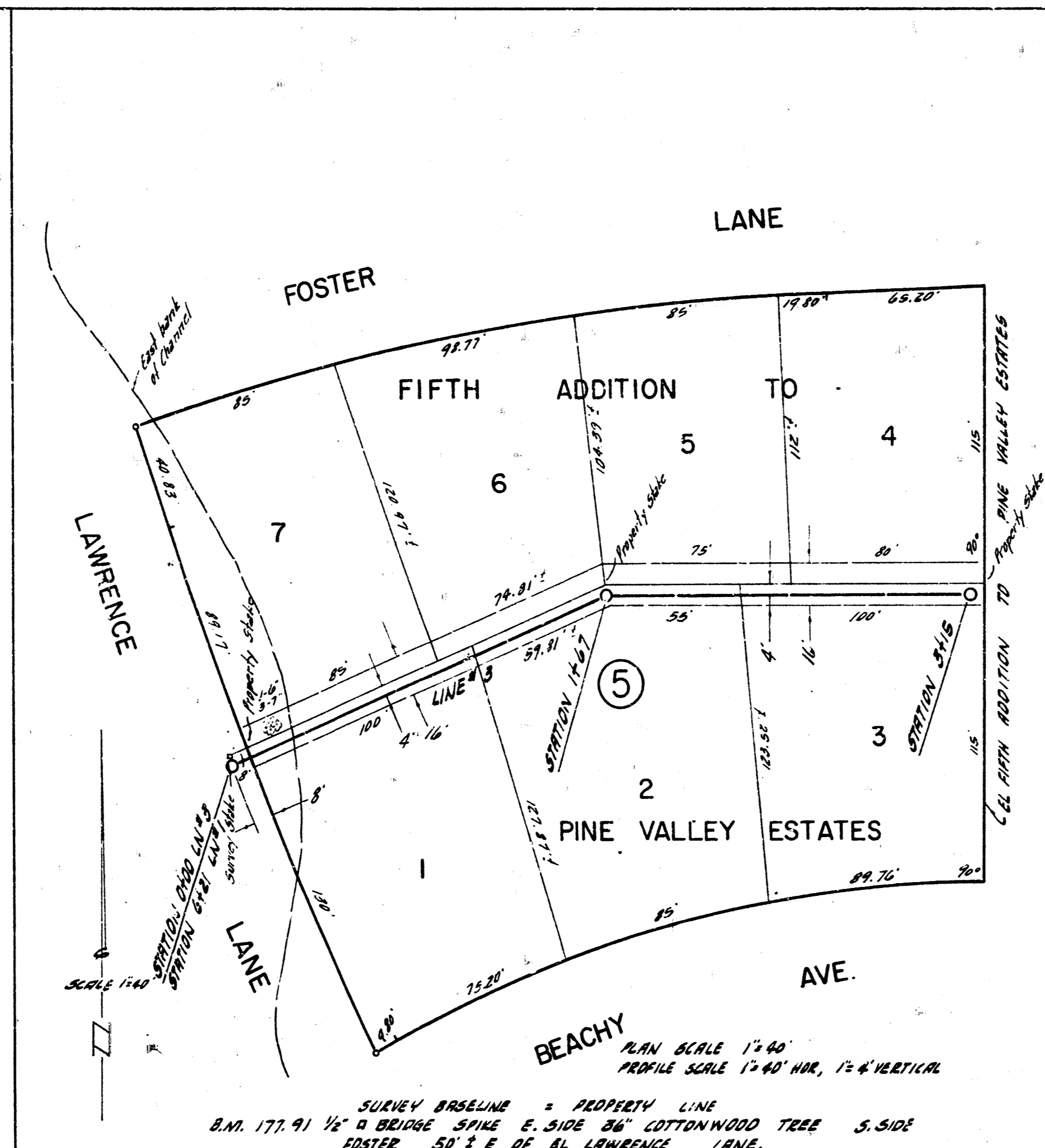
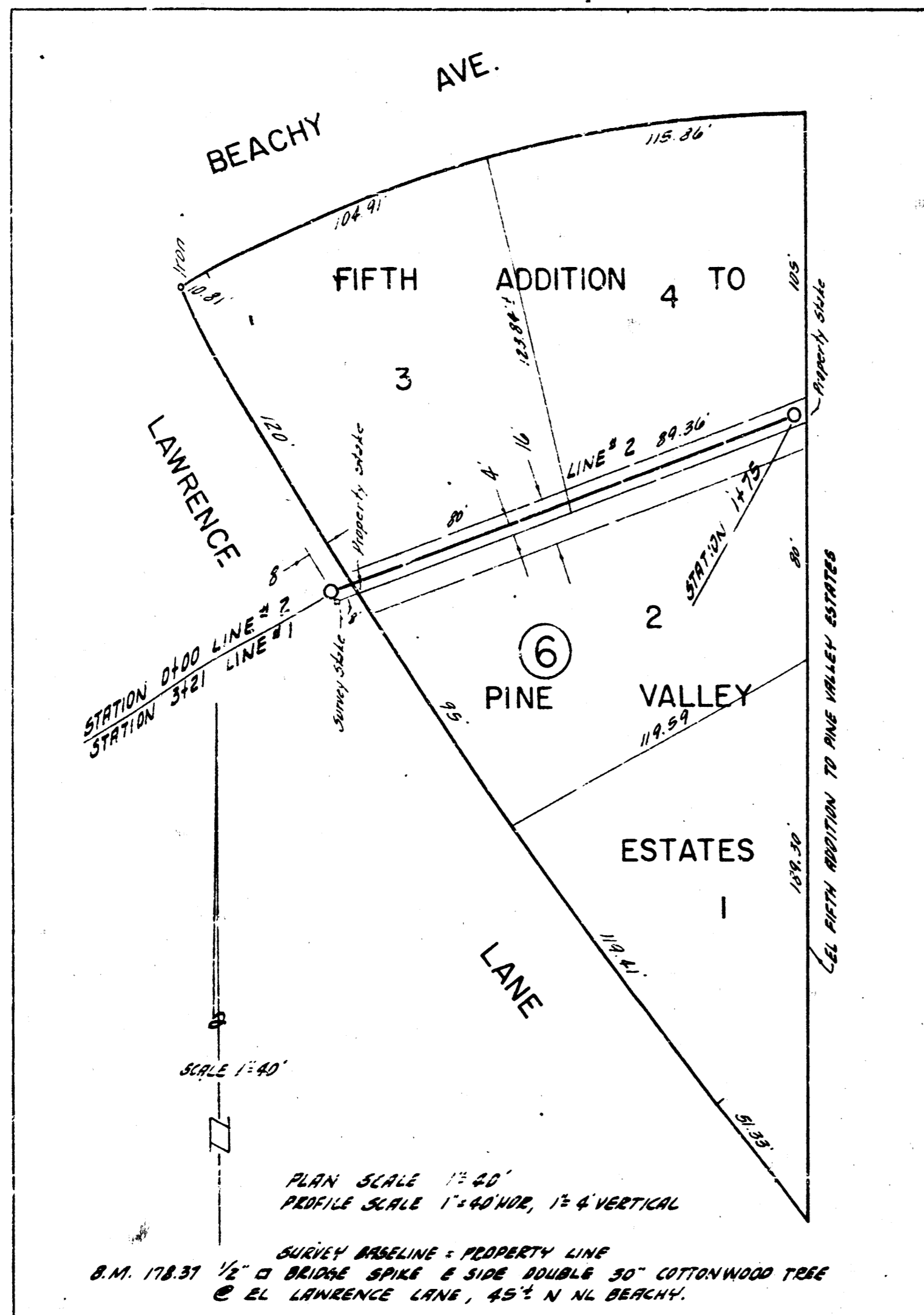
LAT. 78 DCS 2 SAN. SEWER 12  
 C29-79

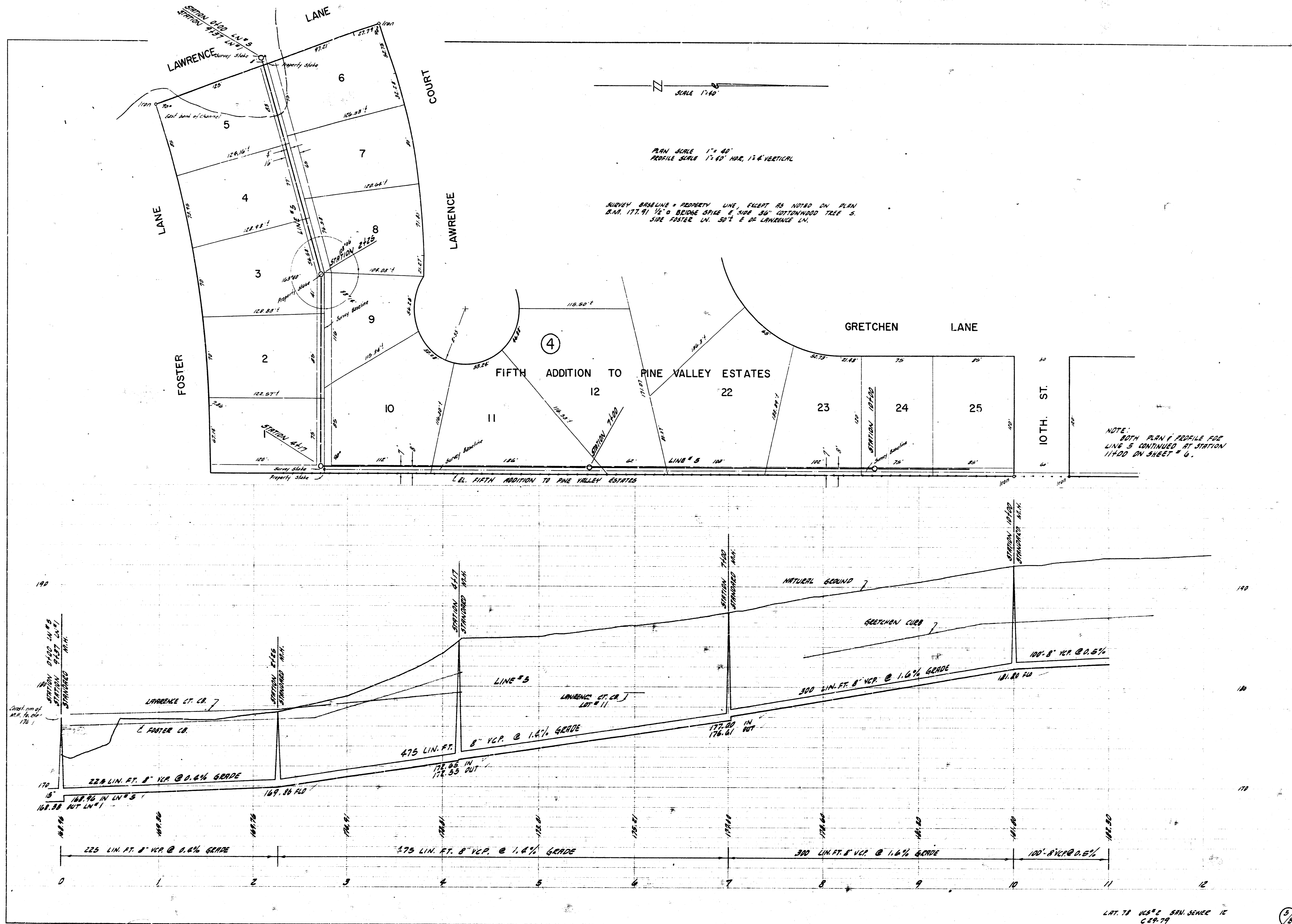


B.M. 177.91 1/2" Ø BRIDGE SPI. E. SIDE 30' COTTONWOOD TREE S. SIDE FOSTER LN. APPROX. 50' E. OF LAWRENCE LN.  
 B.M. 177.43 1/2" Ø CUT ON NE COR. STONE PILLAR BASE, S. SIDE 13TH ST. 1/2' N.W. E. OF WOODLAWN.  
 B.M. 178.37 1/2" Ø BRIDGE SPI. E. SIDE 30' COTTONWOOD TREE @ EL. LAWRENCE LN. 551' N. W. 1/2' S.E.  
 B.M. 181.74 NE COR. CONC. CR. IN BACK OF 10" Ø BR. MANHOLE, S. SIDE 10TH ST.  
 B.M. 187.55 "Ø" CUT ON SW COR. TOP OF WY. POST, CONC. BRIDGE, E. SIDE 10TH ST.





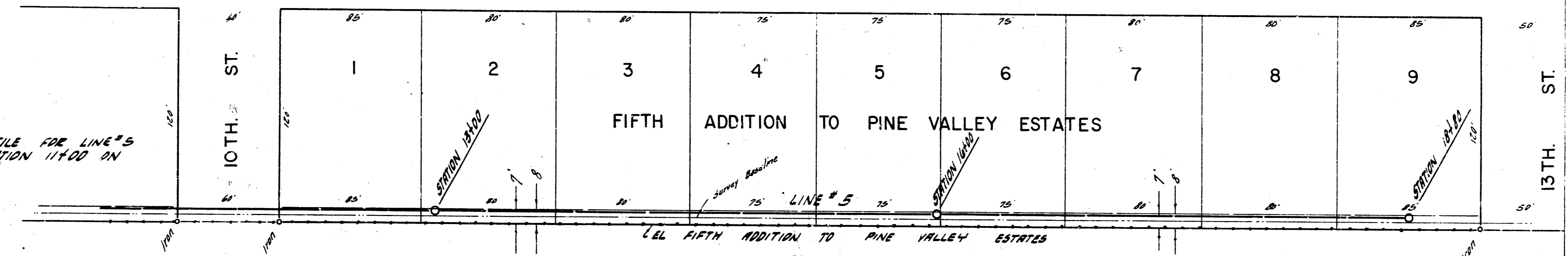




NOTE: BOTH PLAN & PROFILE FOR LINE #5 CONTINUED FROM STATION 11+00 ON SHEET

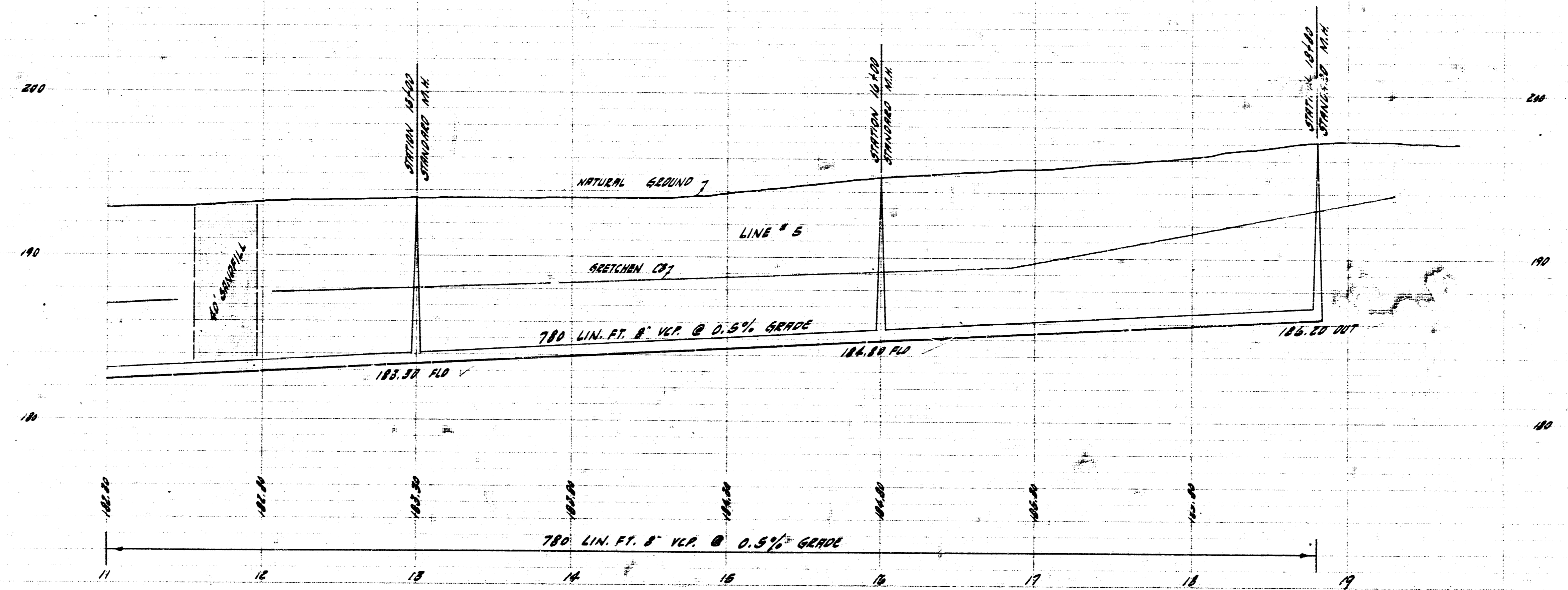
SCALE 1"=40'

GRETCHEN LANE



SURVEY BASELINE = 42' N OF PROPERTY LINE

PLAN SCALE 1"=40'  
PROFILE SCALE 1"=40' HOR. 1"=4' VERTICAL



D.M. 197.49 "X" CUT ON NE COR STONE PLANTER BASE, S. LINE 13TH, 1/4 MI. E WOODLAWN.  
 6 M. 181.74 NE COR CONC. DE. IN BRCK OF NO. 1082 REARAGE, S. SIDE 10TH ST.  
 3 M. 187.55 "D" CUT ON SW COR TOP OF NW PART, CONC. BRDG. E. REMOVED ON 13TH ST.

PLAN SCALE 1"=40'  
 PROFILE SCALE 1"=40' HORIZ. 12"=VERT.

NOTE: PROFILES FOR LINES 6, 7 & 8 ARE LOCATED ON SHEET NO. 8.

