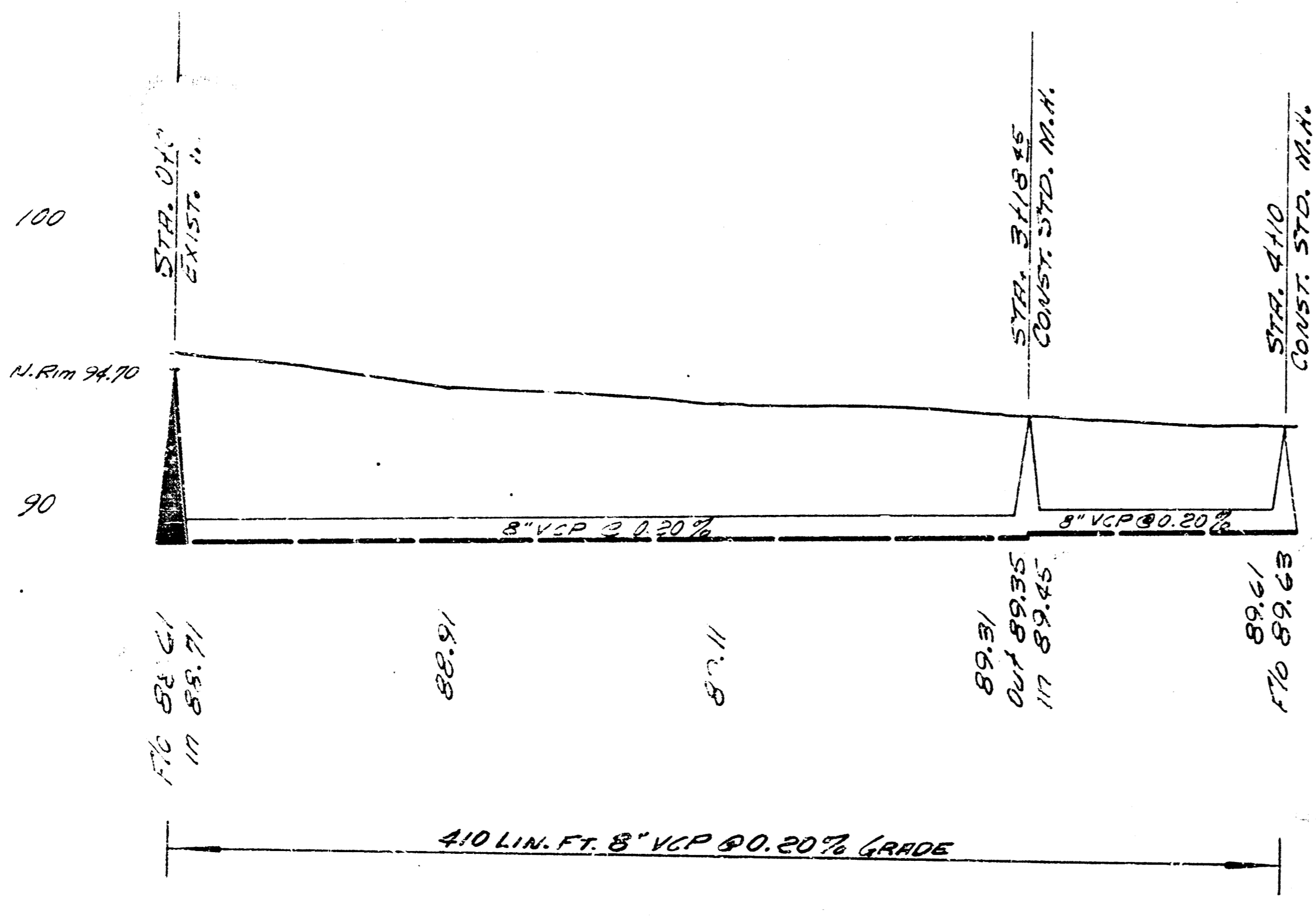
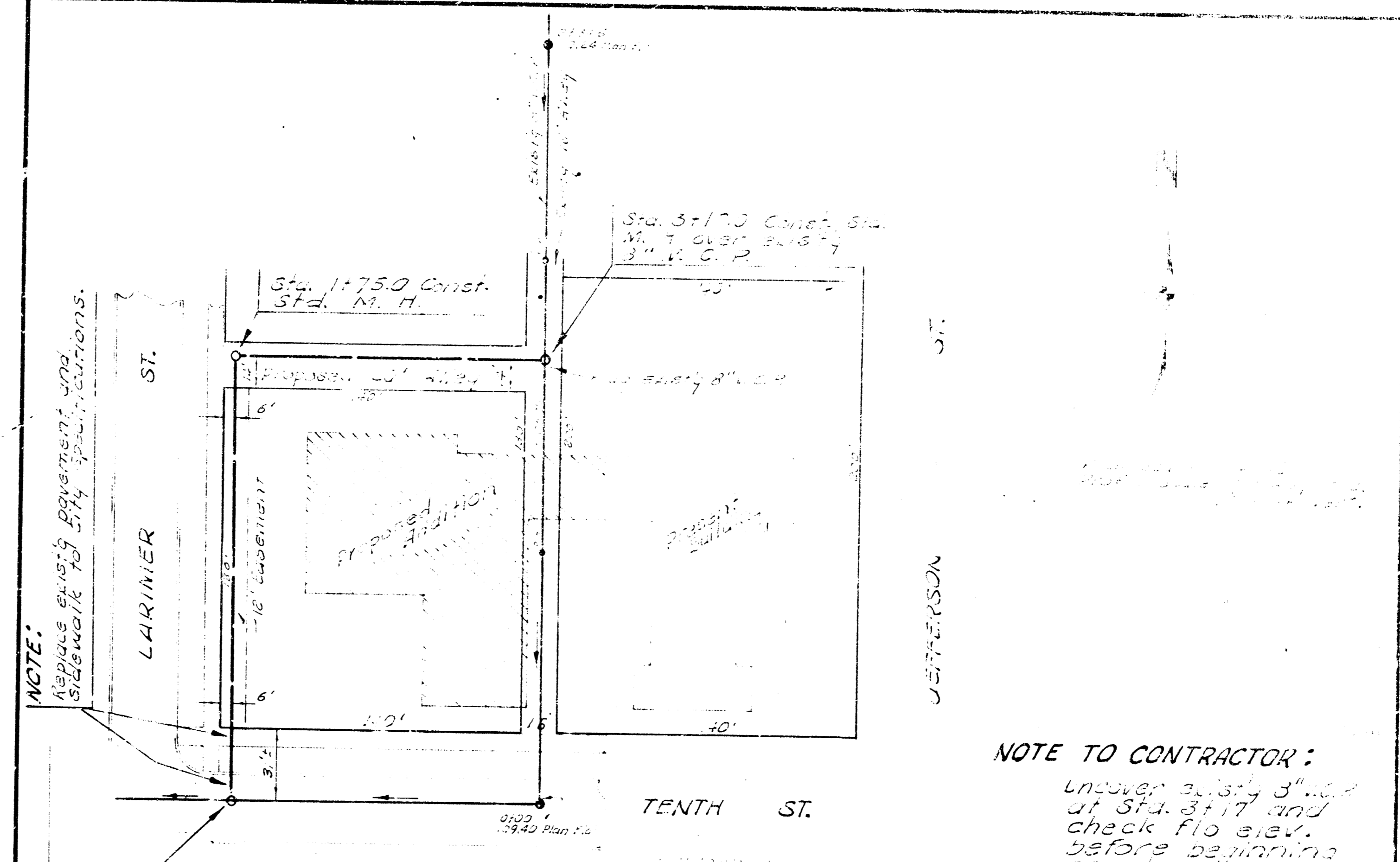


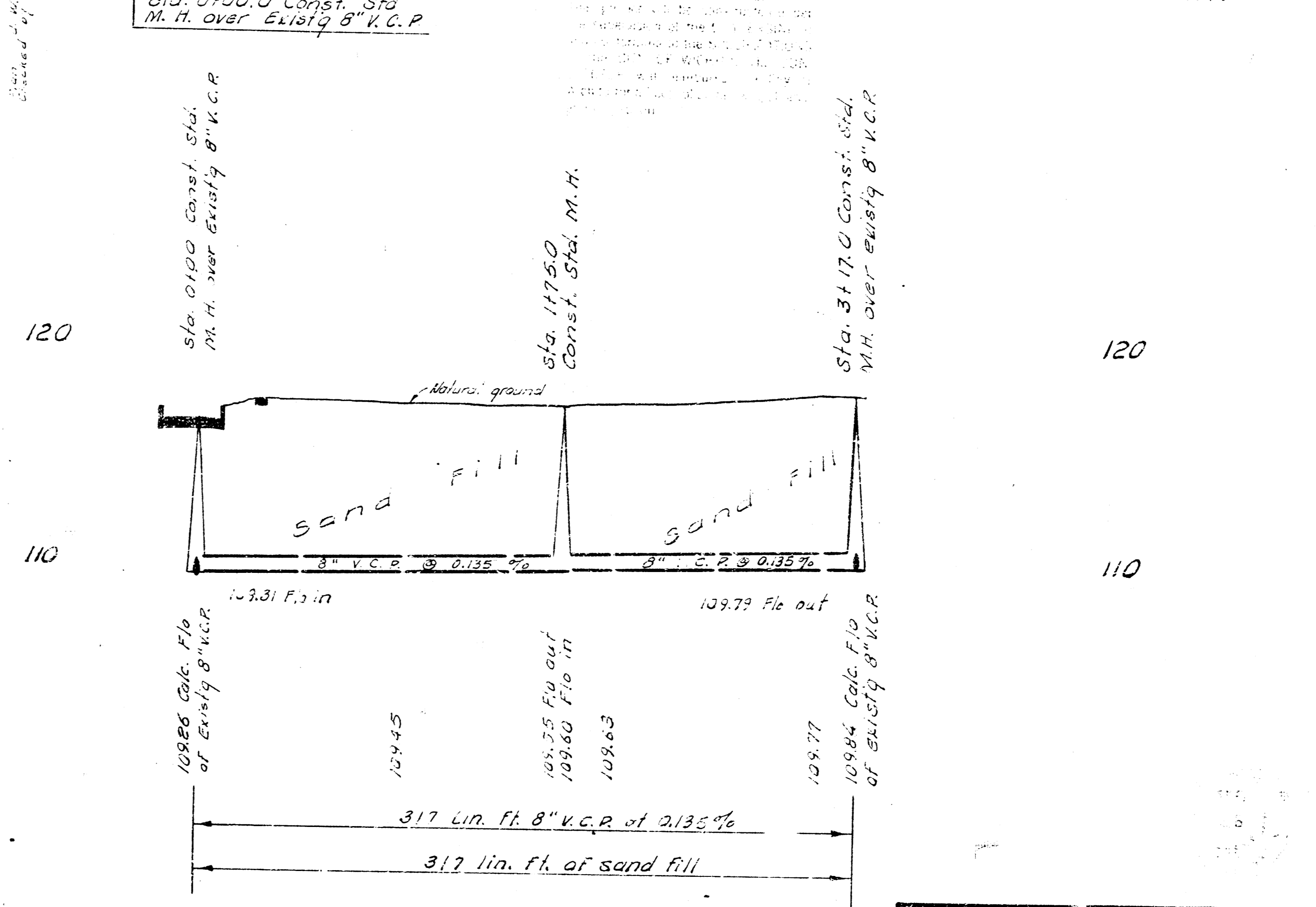
B. M. 96.68 S.E. Cor. Conc. Pkwy. No. 302 W. 30TH
B. M. 97.47 S.E. Cor. Conc. Pkwy. No. N.S. 30TH & Lawrence St.



LAT. 92, S.S. 22
CITY OF WICHITA, KANSAS
B. E. SMITH, CITY ENGINEER
PROJ. NO. C23-125 DATE JAN. 1964



NOTE TO CONTRACTOR:
Under 2.324 3' dia. of Sta. 317 and check flow elev. before beginning construction.



RELOCATION OF
SANITARY SEWER NO. 15
CITY OF WICHITA, KANSAS
B. E. SMITH CITY ENGINEER
PRIVATE JOB FEB. 1964