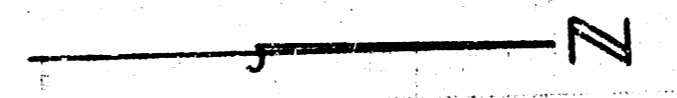
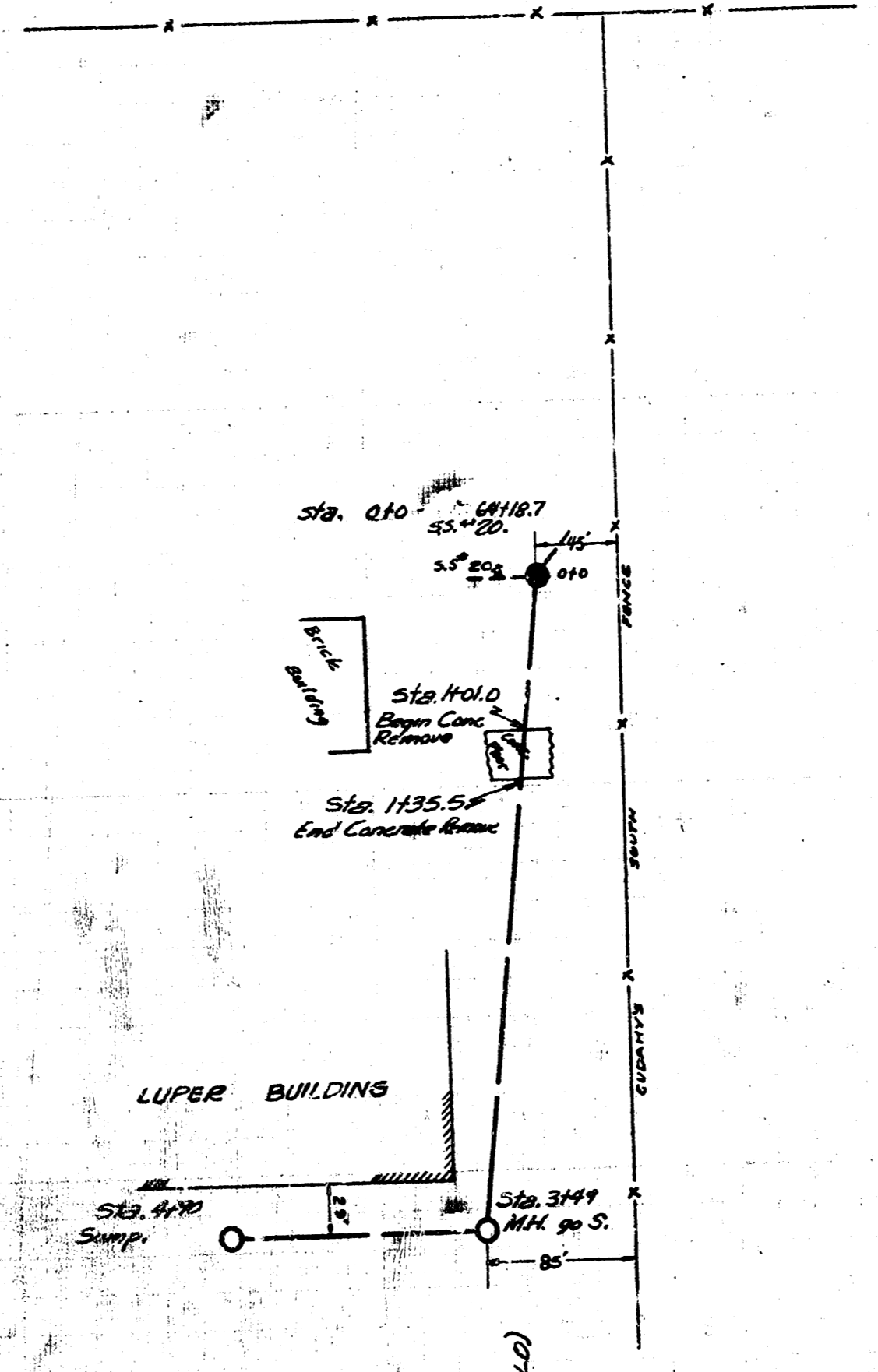
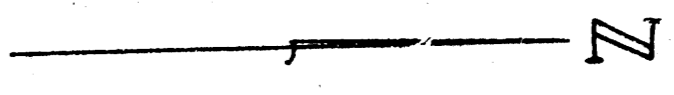


FRED DOLD S.S. PROFILE

B.M. W. RIM MK ON 34" 12223  
 B.M. W. RIM MK STA. 0+0 12375



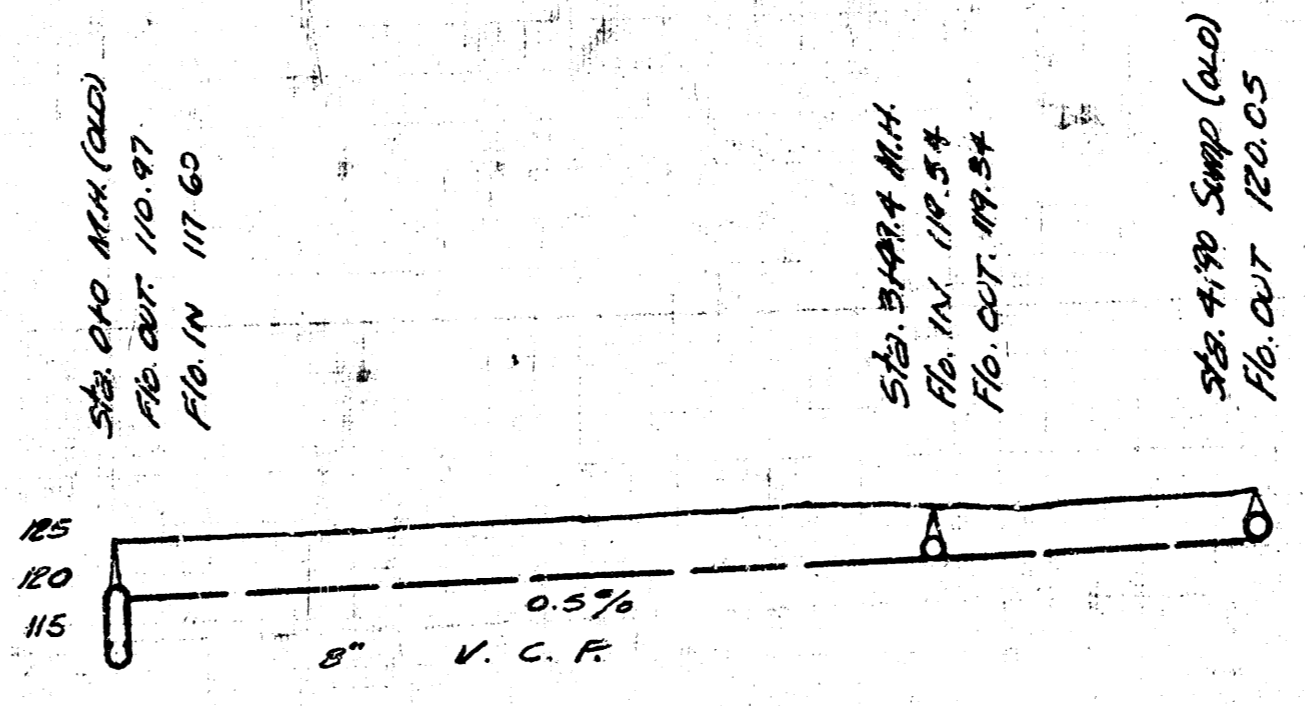
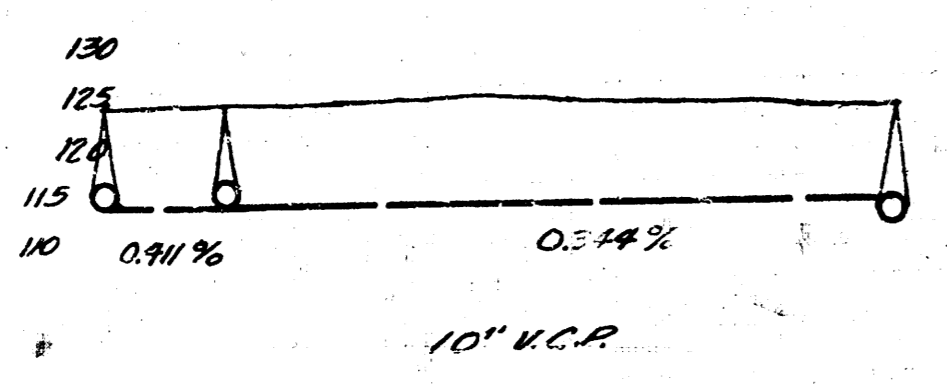
B.M. 12430 "X" ON SW COR. FLAG POLE B. 4  
 IN FRONT OF OMAHA STANDARD.  
 B.M. 12524 HIGH POINT BENT 4" PIPE IN SW  
 COR. CONC. SLAB GUSSENHART PAULING CO.



LUPER S.S. PROFILE

0+00 MK (LUD)  
 REC. 121.56  
 0+15 MK  
 REC. IN 121.85  
 FLO. OUT 121.15

3+45 MK (GAD)  
 FLO. IN 121.15



DEPARTMENT OF SERVICE  
 WICHITA CITY OF KANS.  
 ENGINEERING DIVISION  
 L.K. WHITE City Engineer  
 Scale: 1" = 80'