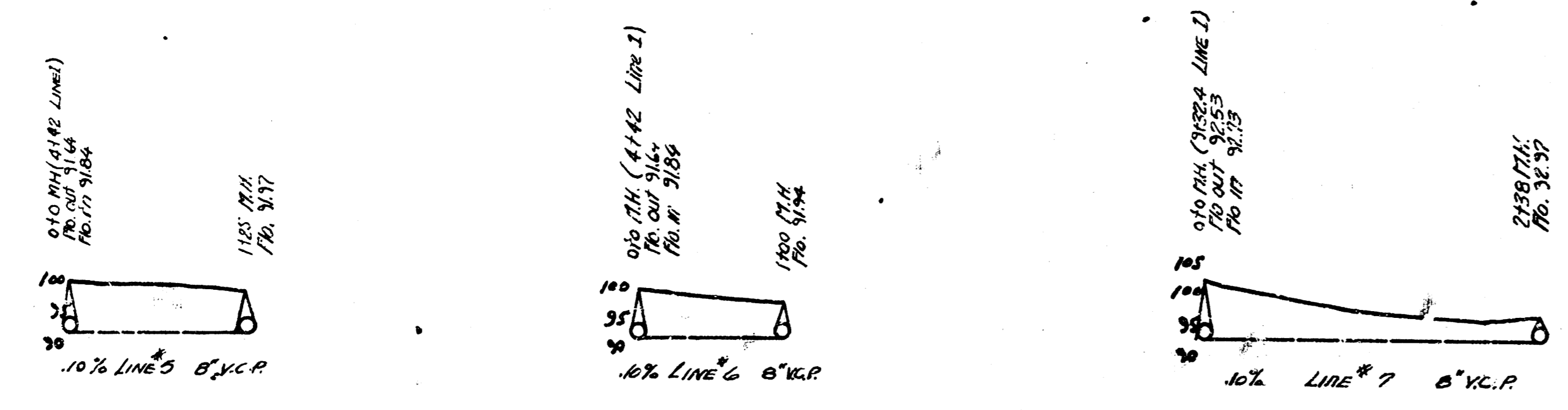
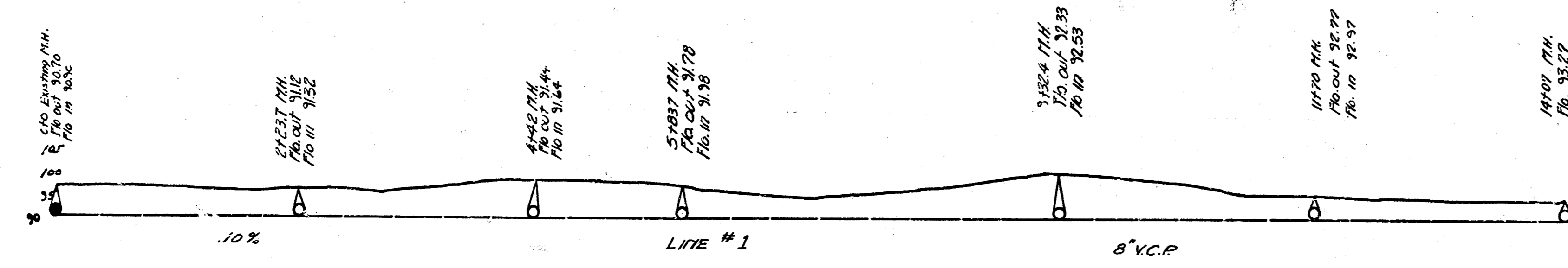
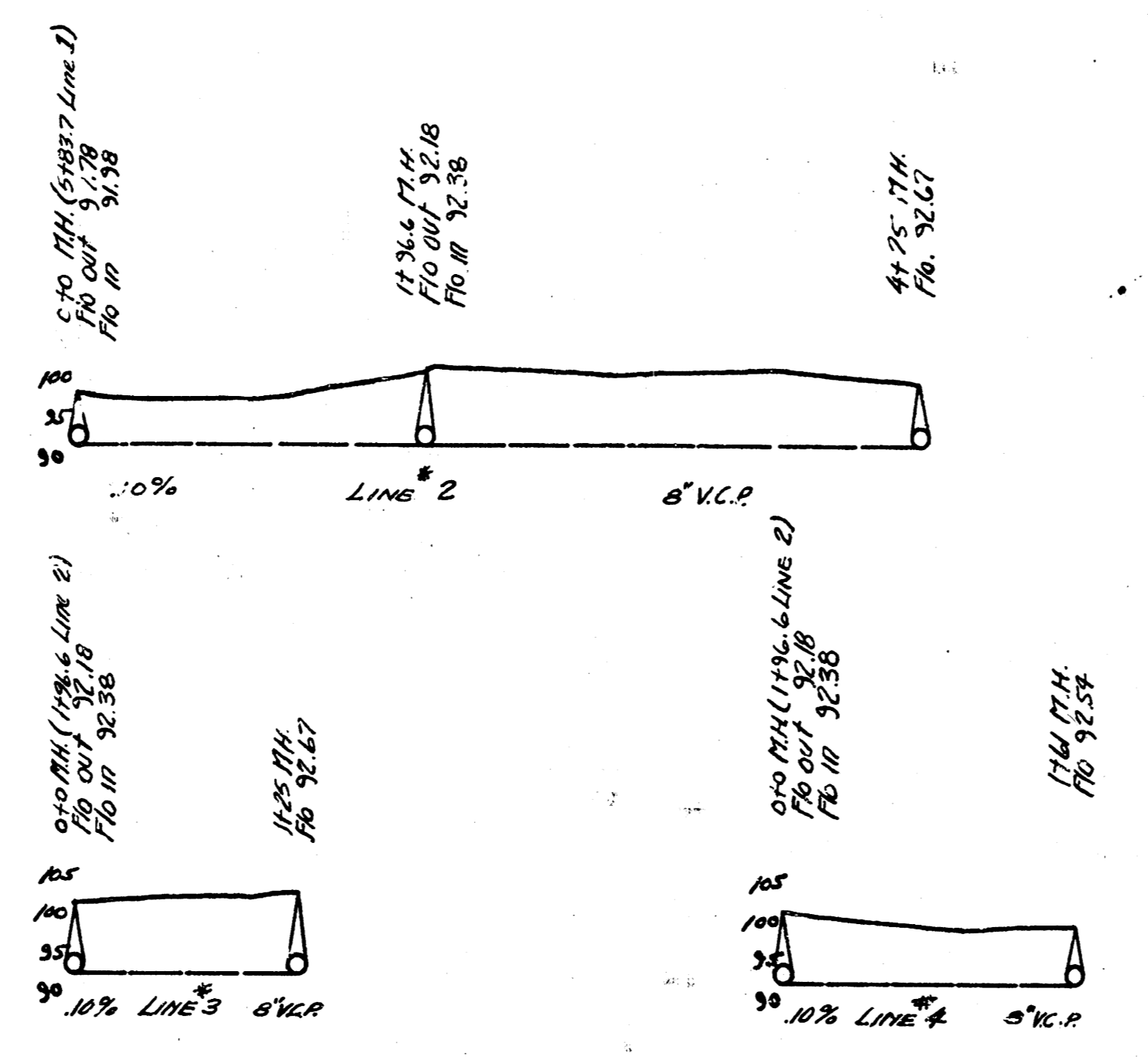


AM 75.77 "2" in 1792 S. End Ch. W.S. Palisade & St. Brookings Addn.
 S.M. 18.05 E. Rim M.H. & Kinkaid & EL. 0.885
 B.M. 100.05 E. Rim M.H. & Kinkaid.



LAT. 5, DIST. A, SS. # 20

DEPARTMENT of SERVICE
 CITY OF WICHITA, KANSAS
 ENGINEERING DIVISION
 L.K. WHITE CITY ENGINEER
 SANITARY SEWER
 SCALE: 1"=100'
 LAT. 5, DIST. A, SS. # 20