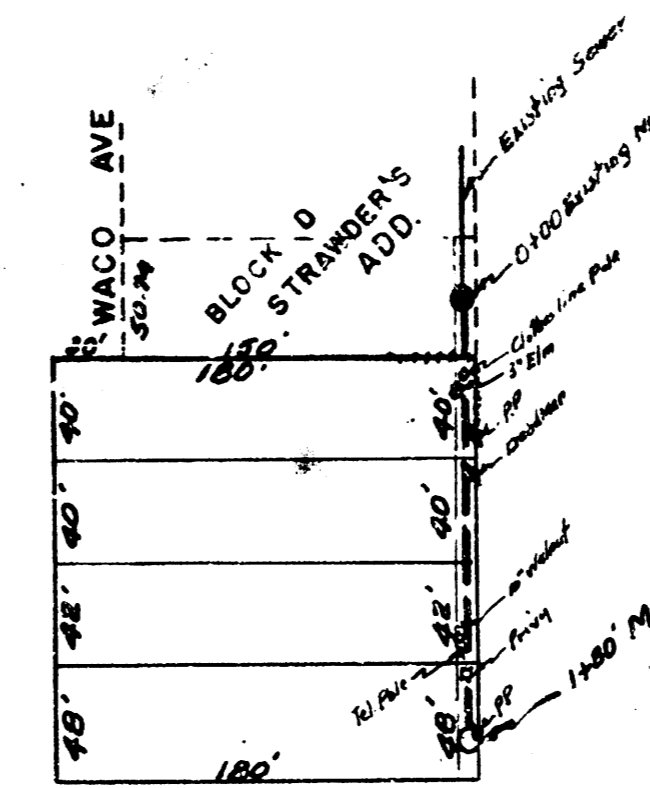
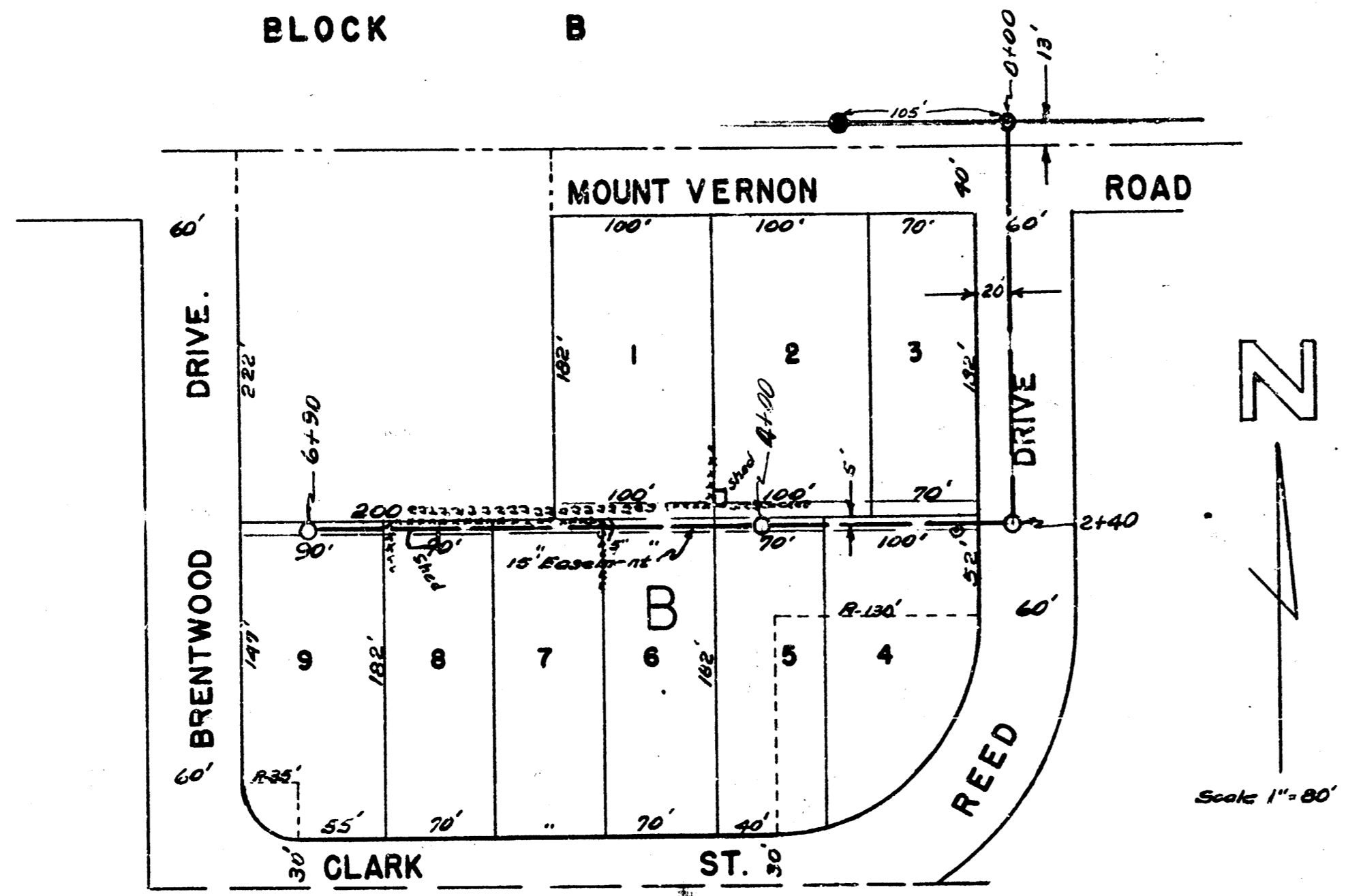
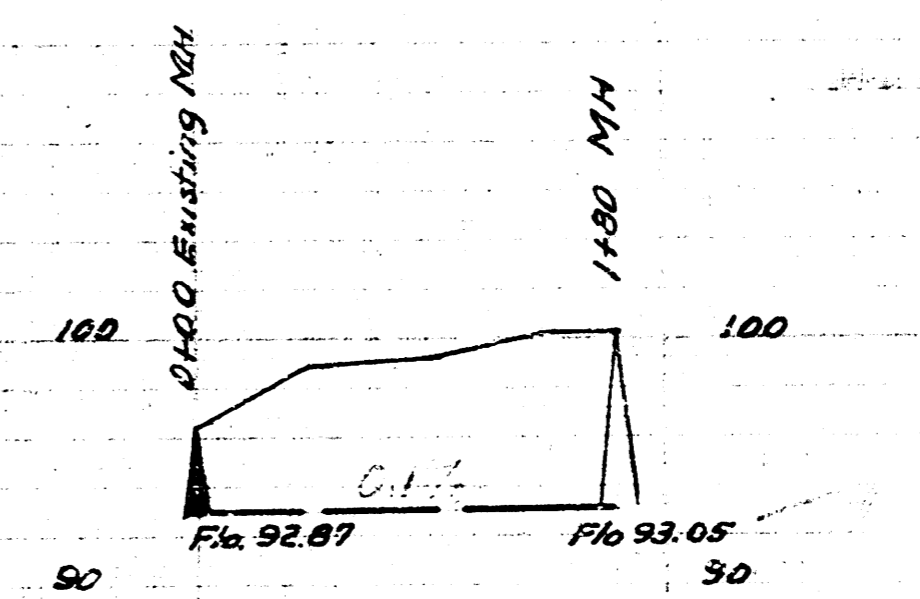
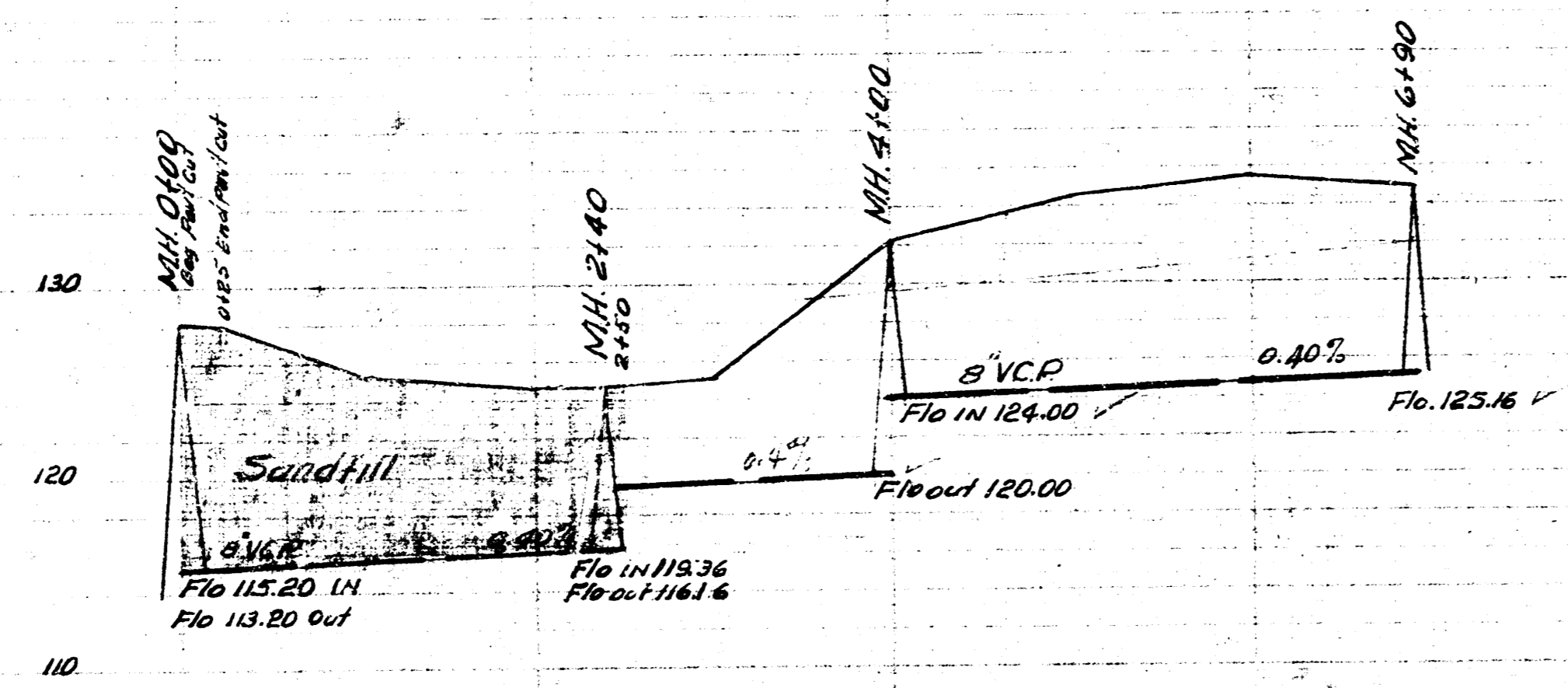


**MOUNT VERNON HEIGHTS
BLOCK B**



B.M. 100.52 Step bench in N.S. P.R. and pole E. of Clifton N.S. Mt. Vernon

B.M. 97.42 Top cb. so. end of radius SW cor Waco & Blake



9-21-52
 Drawn by
 Macdon
 Checked by
 M. S. G.
 Block No.

9-9-52
 Drawn by
 L. M. Cain
 Checked by
 B. S. G.
 Block No.

LAT. 25 DIST. 2 SS 12
 CITY OF WICHITA KANSAS
 L. WHITE CITY ENGINEER
 Proj No. C-22-55



LAT. 19 DIST. 4 SS 20
 CITY OF WICHITA KANSAS
 L. WHITE CITY ENGINEER
 Proj No. C-22-47

