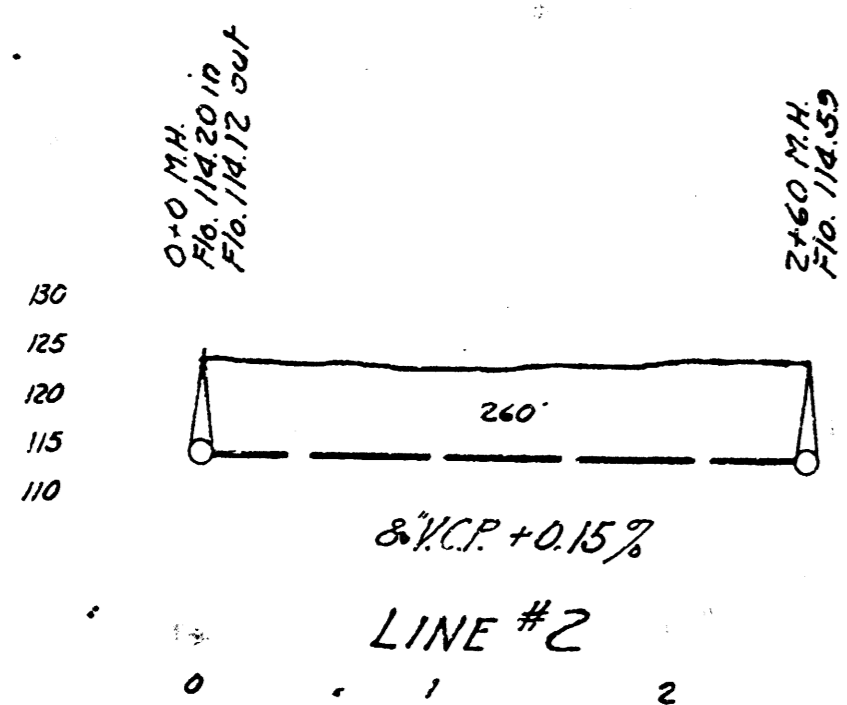
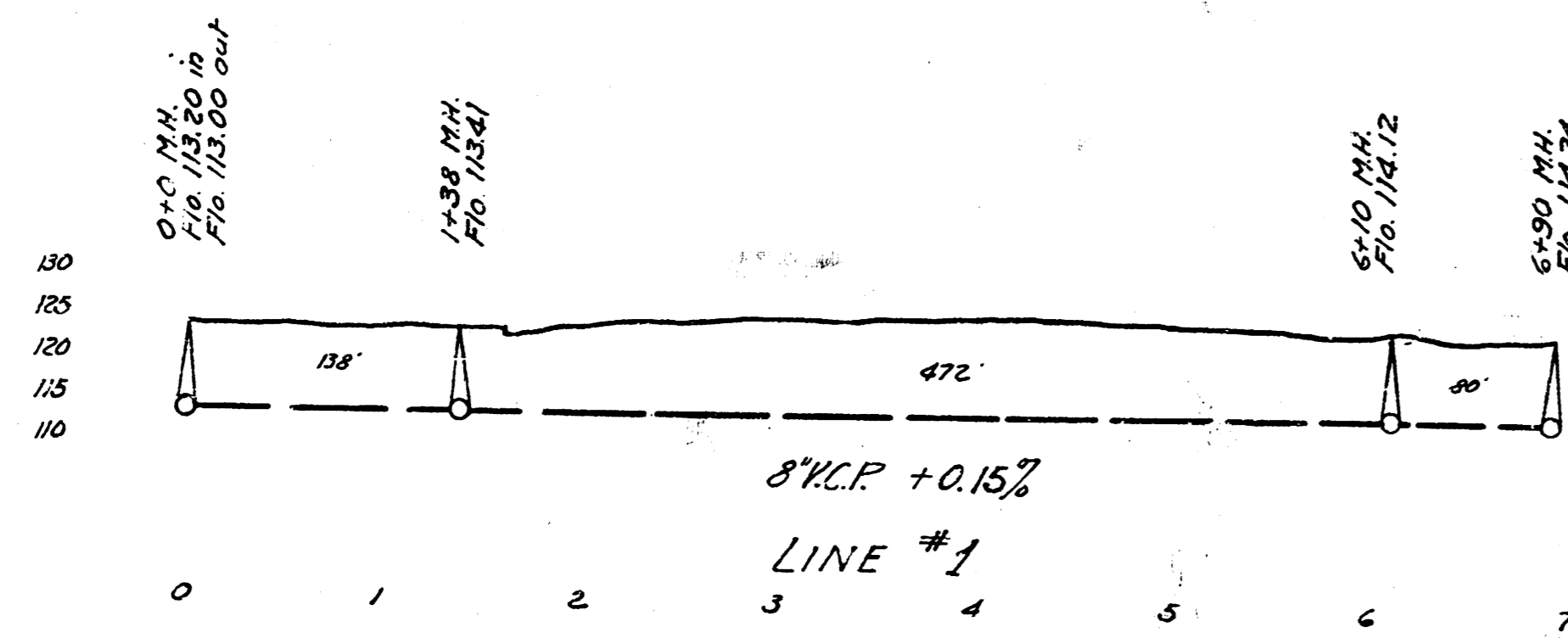
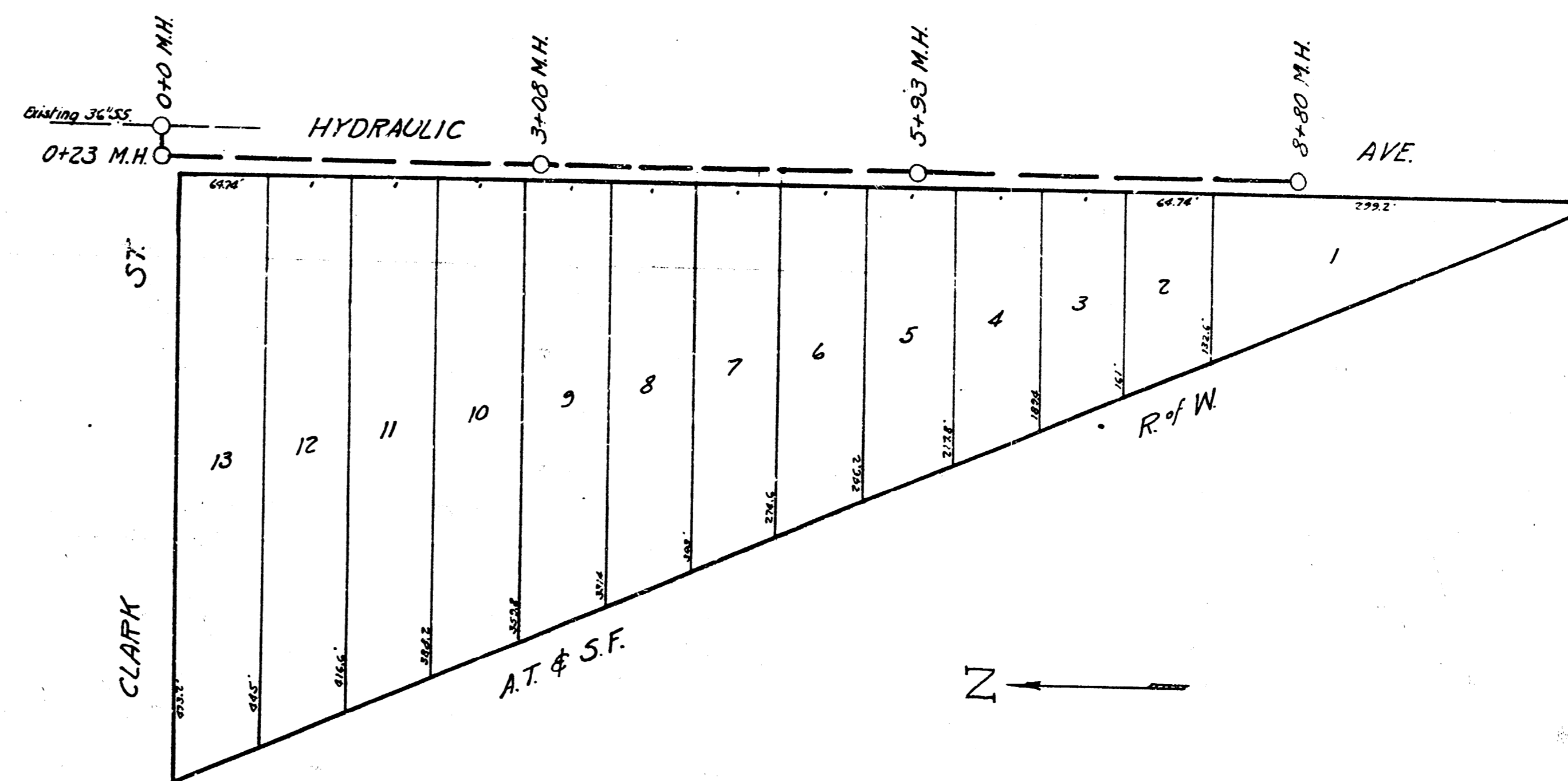


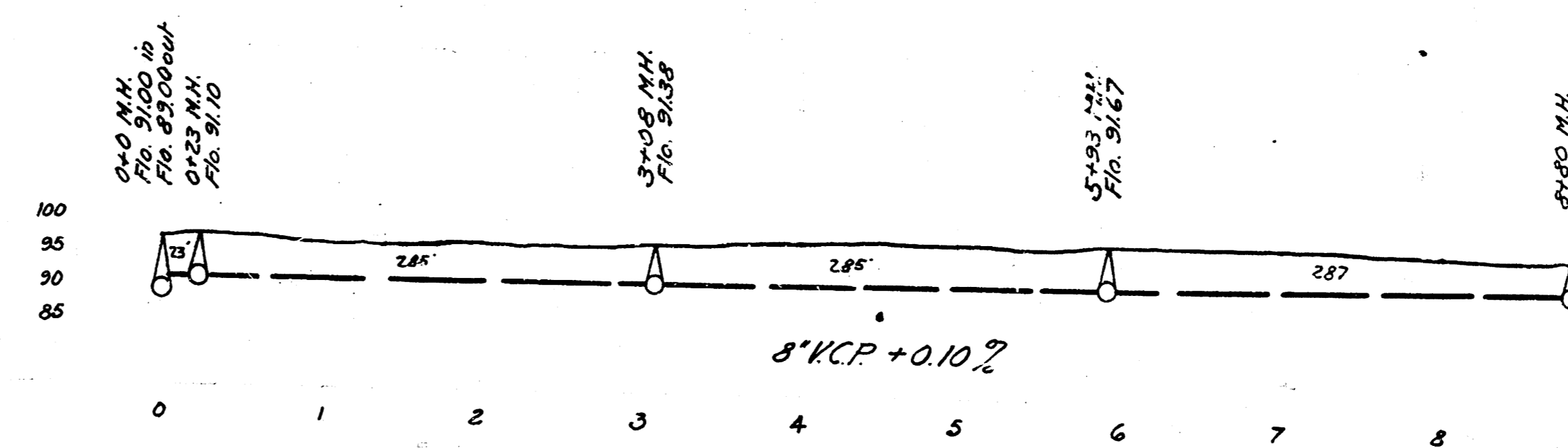
LAT. W, DIST. R, S.S.#20
WICHITA, KANSAS



B.M. Elev 123.27' x on cb. N.S. 14th St. # EL Perry Ave.



LAT. Q, DIST. B, S.S.#20
WICHITA, KANSAS



B.M. Elev 96.81' Sid. S.W. cor. Hydraulic & Levy St.

ENGINEERING DEPARTMENT
CITY OF WICHITA, KANSAS
P.L. BROCKWAY CITY ENGINEER
B.E. SMITH ENGINEER OF DESIGN
SEPT. 1942 SCALE 1"=80'