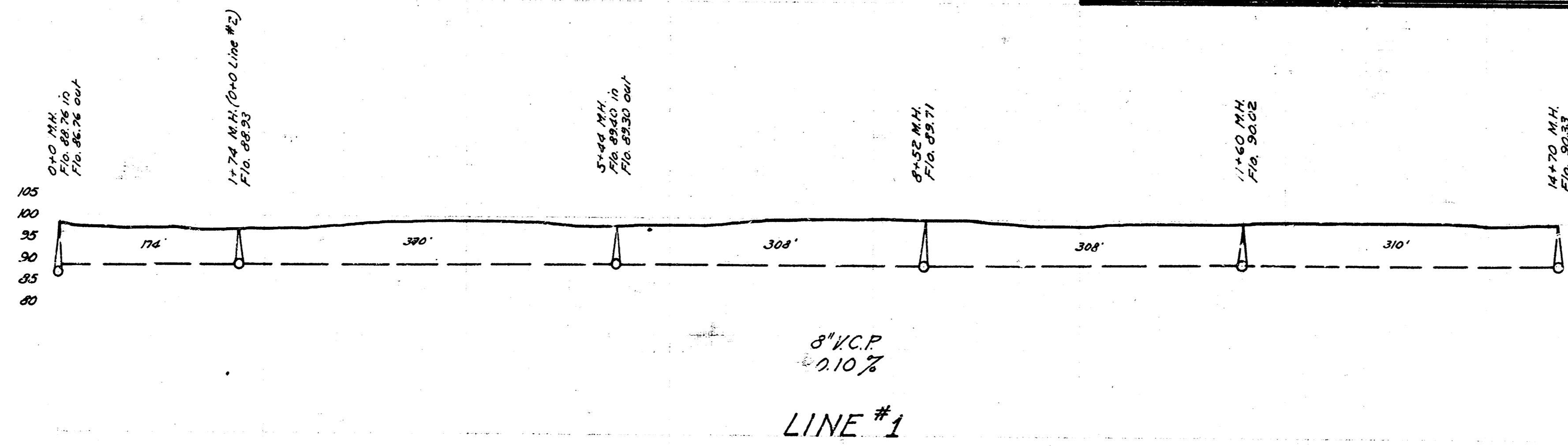
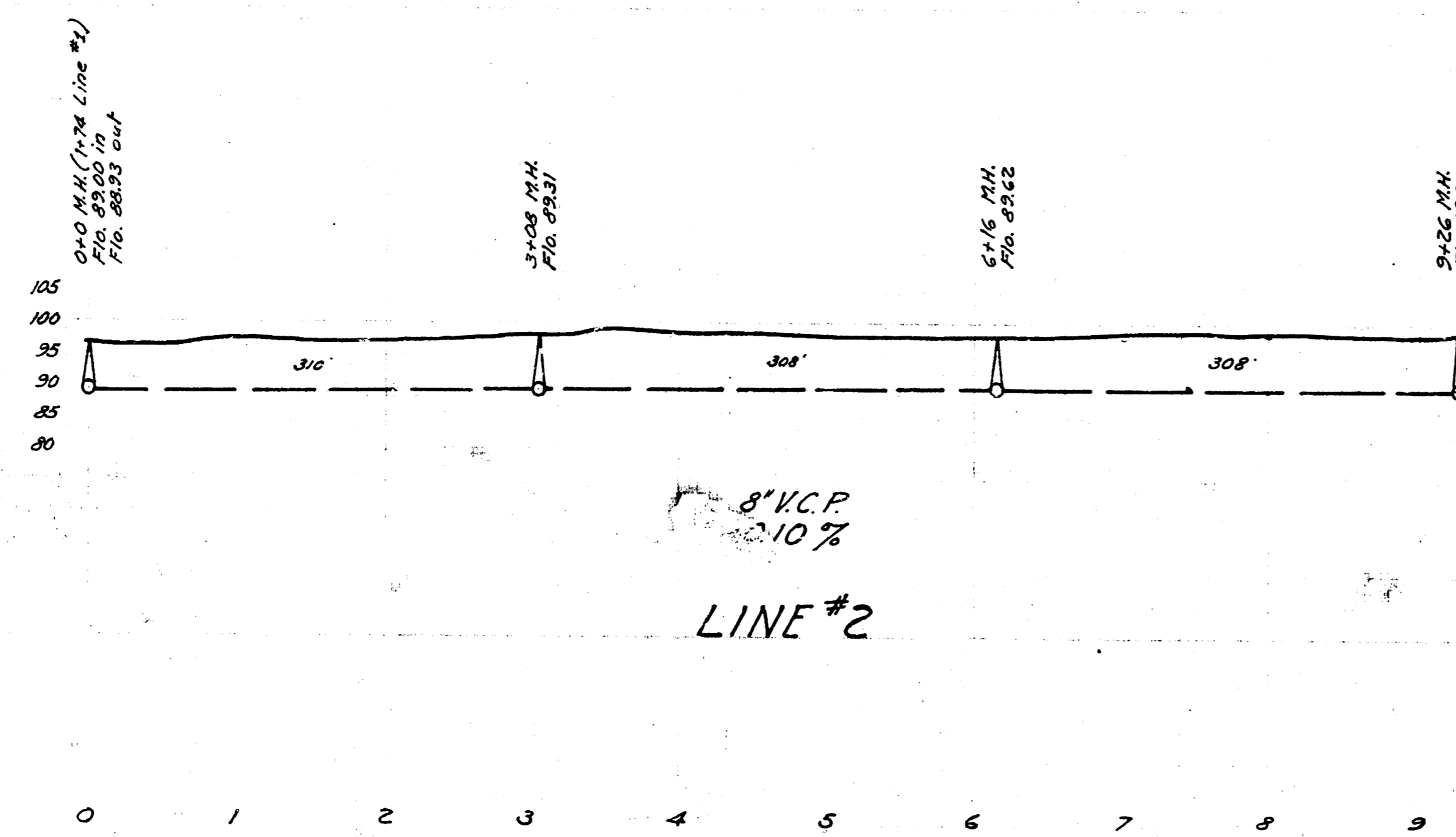
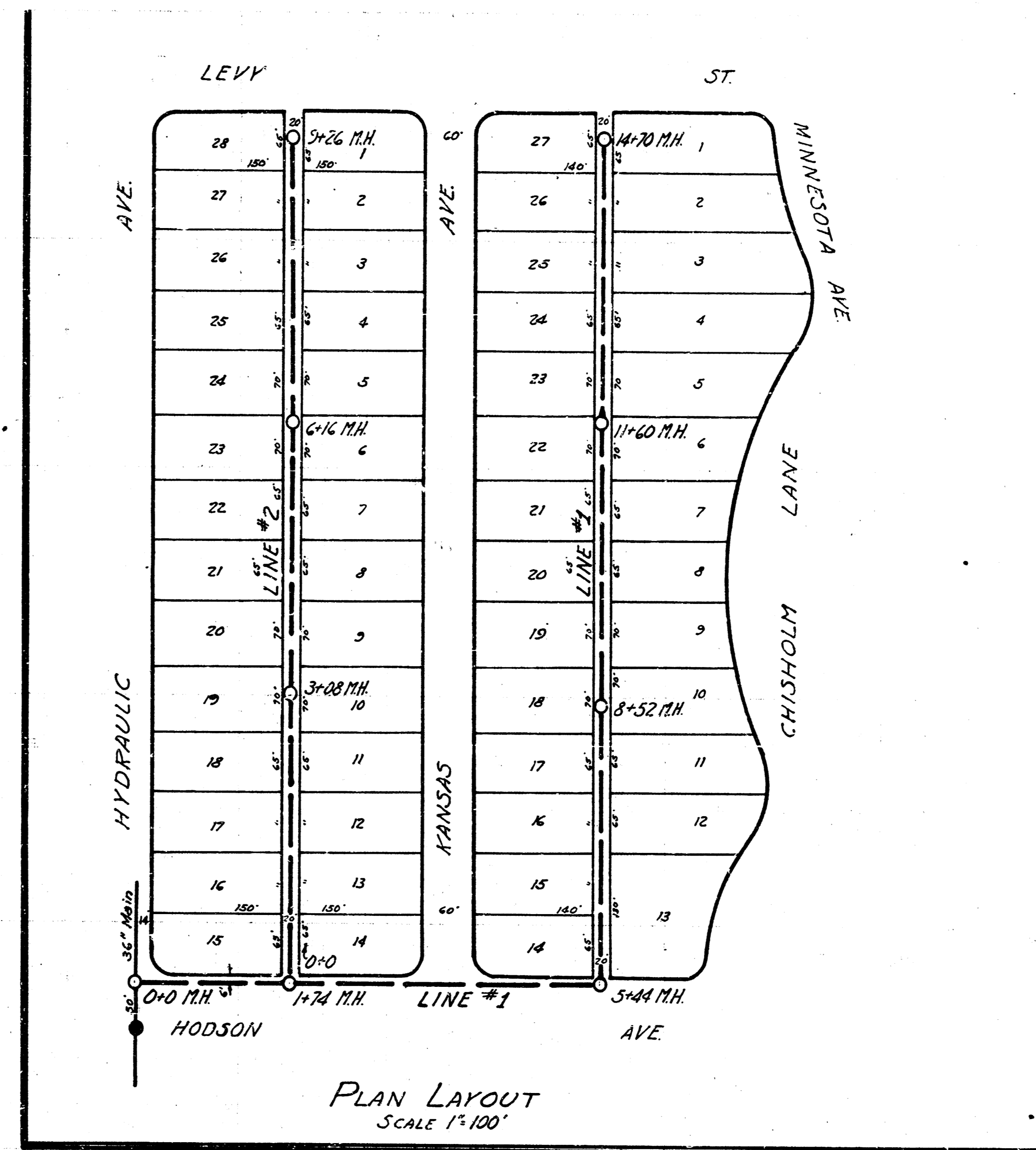


LAT. S, DIST. B, S.S. #20  
WICHITA, KANSAS



B.M. Elev. 96.81 - Std. bench mark S.W. cor. Levy St. & Hydraulic Ave.  
58.55 - Iron N.L. Hodson on 25 R. line E. of Kansas Ave.



ENGINEERING DEPARTMENT  
CITY OF WICHITA, KANSAS  
P.L. BROCKWAY - CITY ENGINEER  
B. E. SMITH ENGINEER OF DESIGN  
FEBRUARY 1943. CKD BY \_\_\_\_\_



205 45