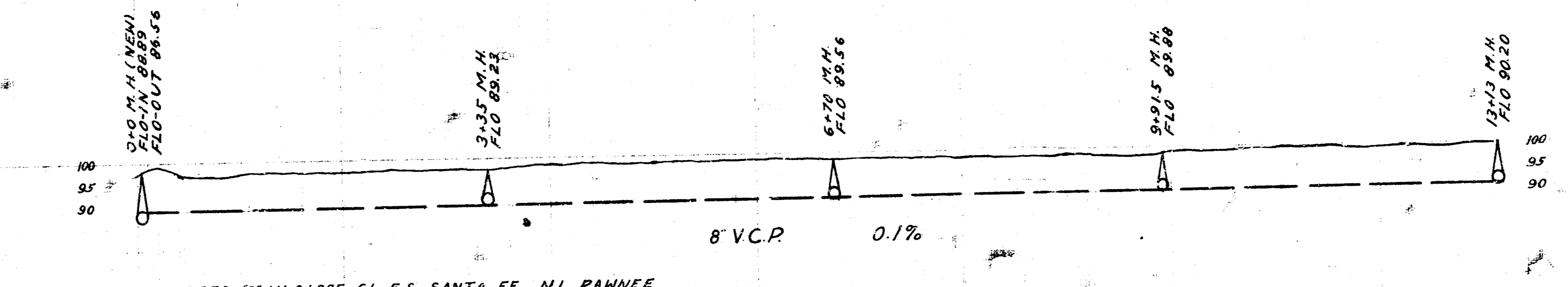
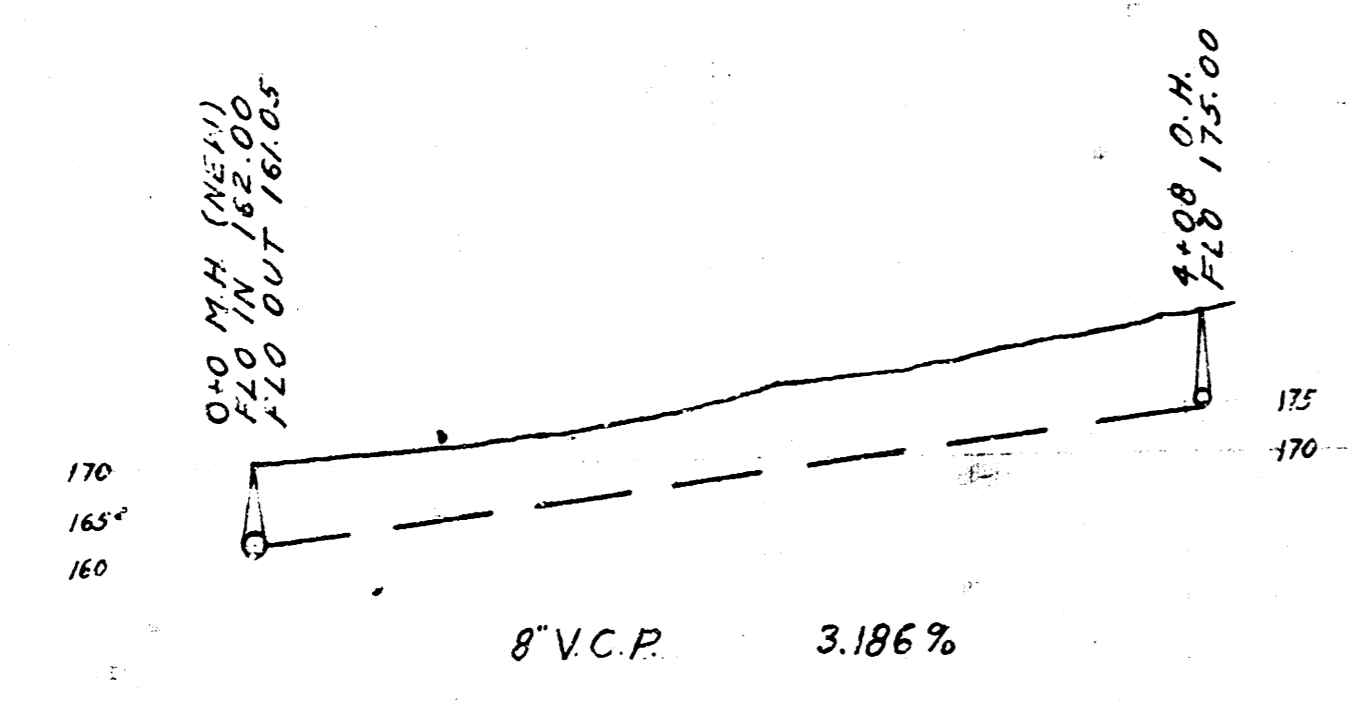
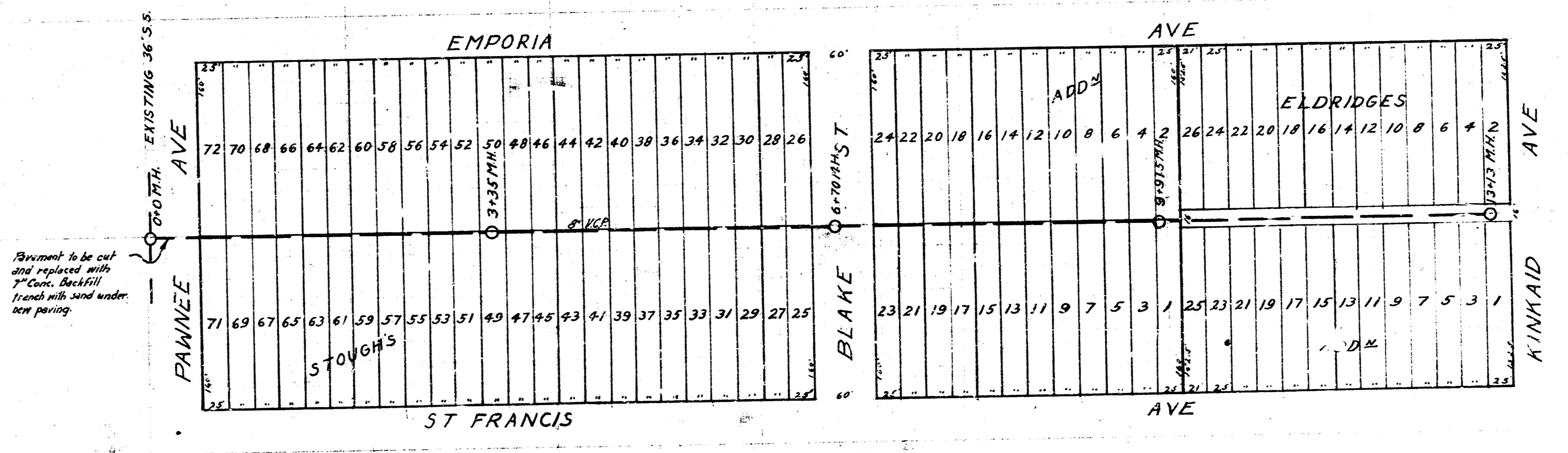
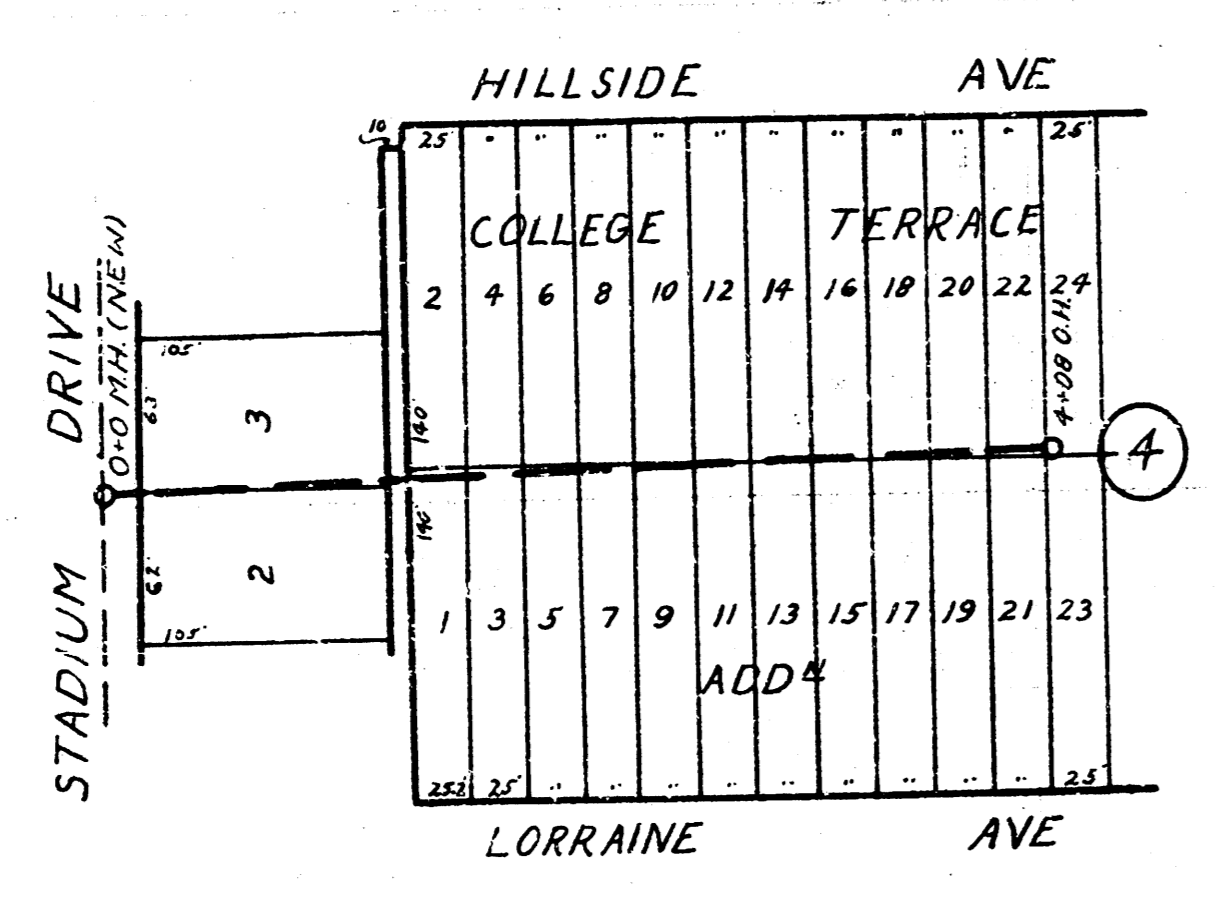


LAT Y DIST E S.S.#12
 N ——— N

LAT W DIST B S.S.#20
 ——— N



B.M. 174.68 3" IN GLOBE W.C. HILLSIDE, N.S. STADIUM
 B.M. 172.05 R.R. SPIKE IN P.P. S.L. SHADYBROOK ADDY BET. HILLSIDE + LORRAINE

B.M. 95.73 6" IN GLOBE CL. E.S. SANTA FE, N.L. PAWNEE
 B.M. 100.71 R.R. SPIKE IN P.P. S.S. KINKAID + N.S. ALLEY BET. EMPORIA + ST. FRANCIS

SERVICE DEPARTMENT
 CITY OF WICHITA, KANSAS
 ENGINEERING DIVISION
 L.K. WHITE CITY ENGINEER
 SEPT. 1946 1'-80'