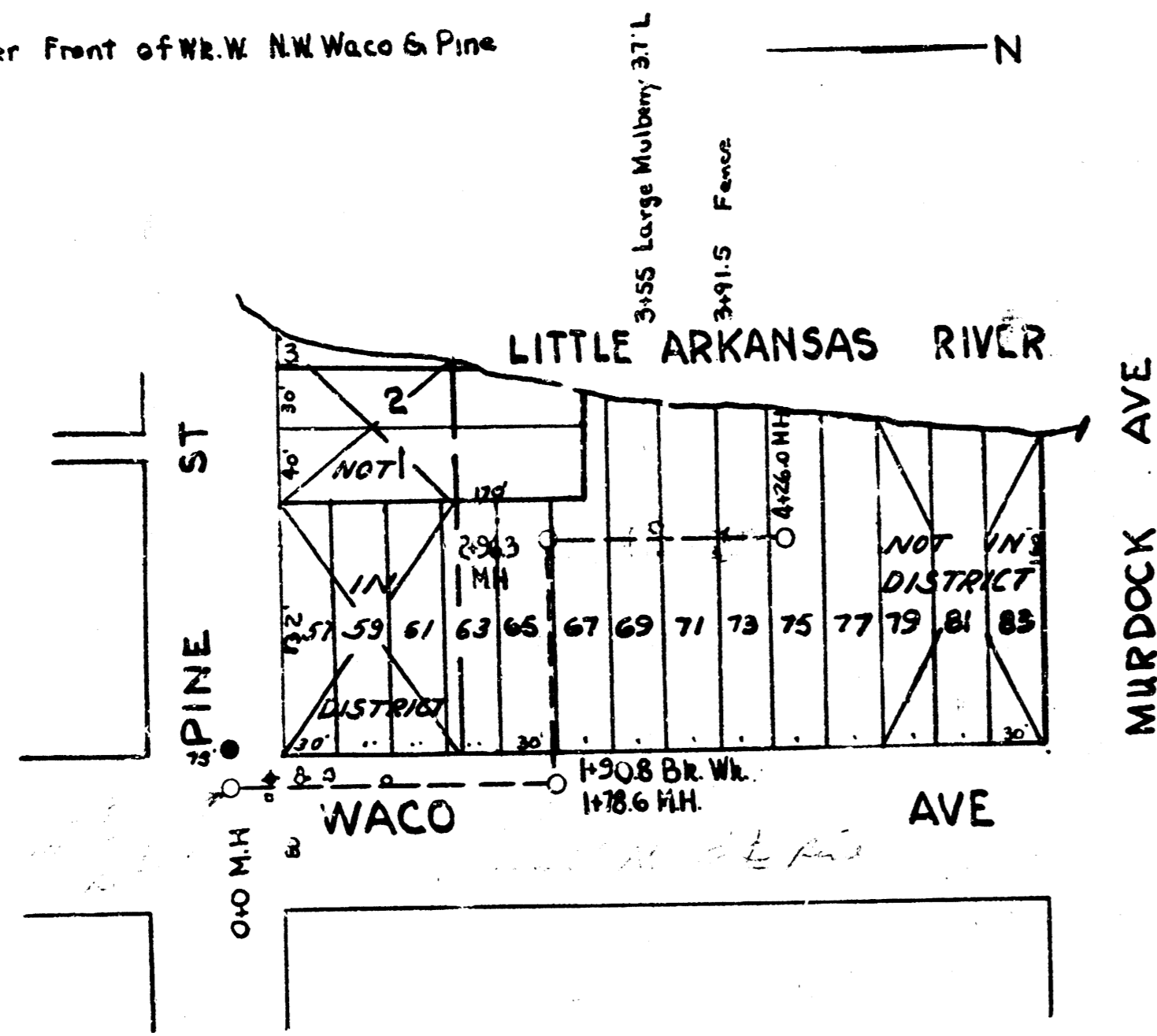
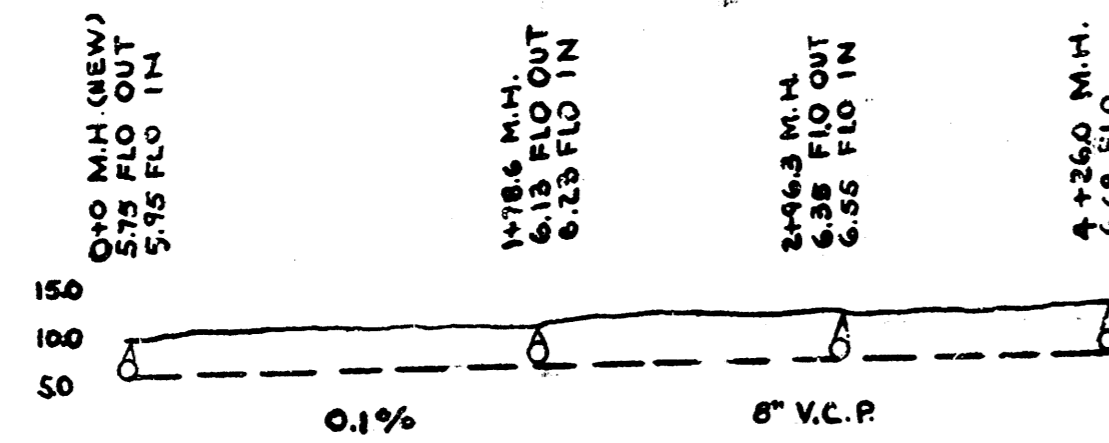


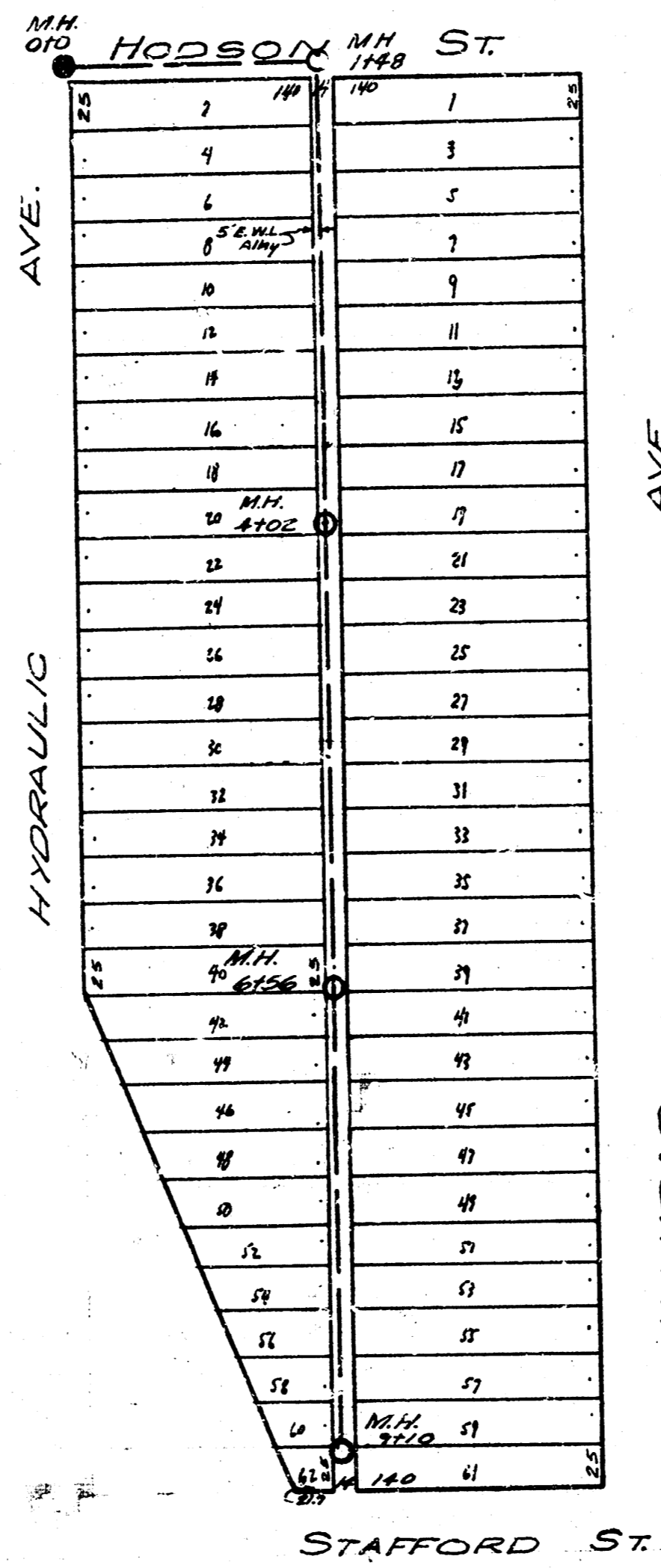
B.M. 10.00 "F" in Fisher Front of W.R.W. N.W. Waco & Pine
[Assumed]



- 00 Bag Bell Cur. Apph.
- 0+08 Elm. Ppt. Cut. Bag. Chgtr.
- 0+58 Elm. Ch. 4 Gr.
- 0+17.5 2" x 2" Light Guy. Pole 10' L.
- 0+30.3 4" App. Wk.
- 0+36.6 1" x 1" Hyd. 15' L.
- 0+53.7 10" Hoop. Tree 23' L.
- 0+64.3 Water Meter 18' L.
- 0+80.0 & 53' Appr. Wk.
- 0+80.0 & 55' Appr. Wk.
- M.I.L. & 40' Dr.

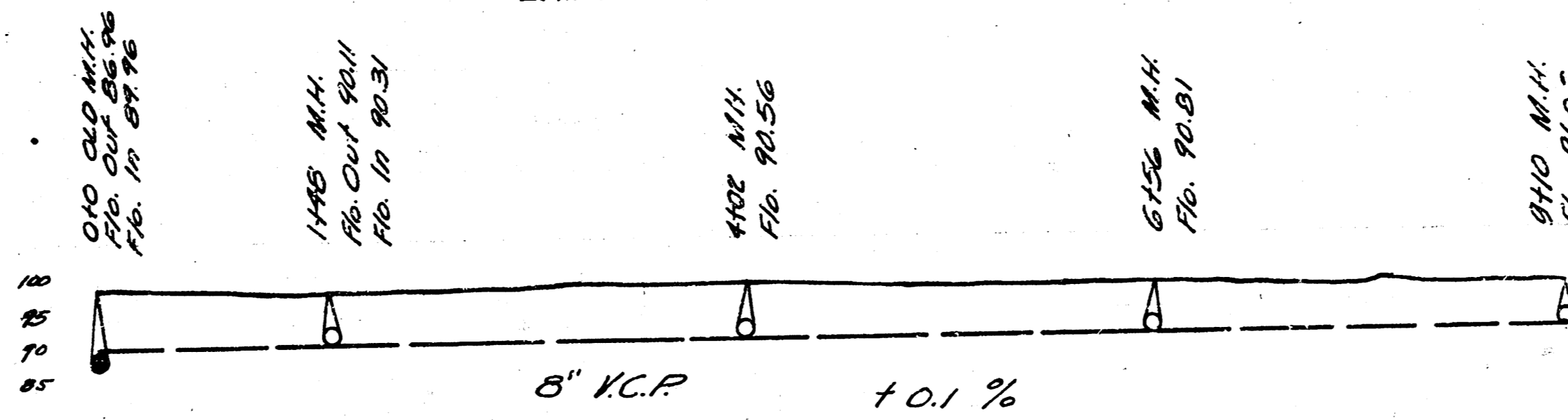


Scale 1" = 30'



B.M. 97.10 "F" IN DITCHIE E.C.B. RET. ALLEY S.S. HODSON
BETWEEN KANSAS & HYDEAULIC
B.M. 97.13 N.W. COR. CONC. PAVEN. 1ST. HOS. WEST
KANSAS S.S. STAFFORD.

LAT 1 DIST. B MIAN 20



LAT 10 S.S.1
DEPT. of SERVICE
CITY of WICHITA, KANS.
Engineering Division
L.K. WHITE City Engineer
Sanitary Sewer
Scale 1" = 30'

DEPARTMENT OF SERVICE
WICHITA CITY OF KANSAS
Engineering Division
L.K. WHITE City Engineer
Sanitary Sewer Scale 1" = 30'