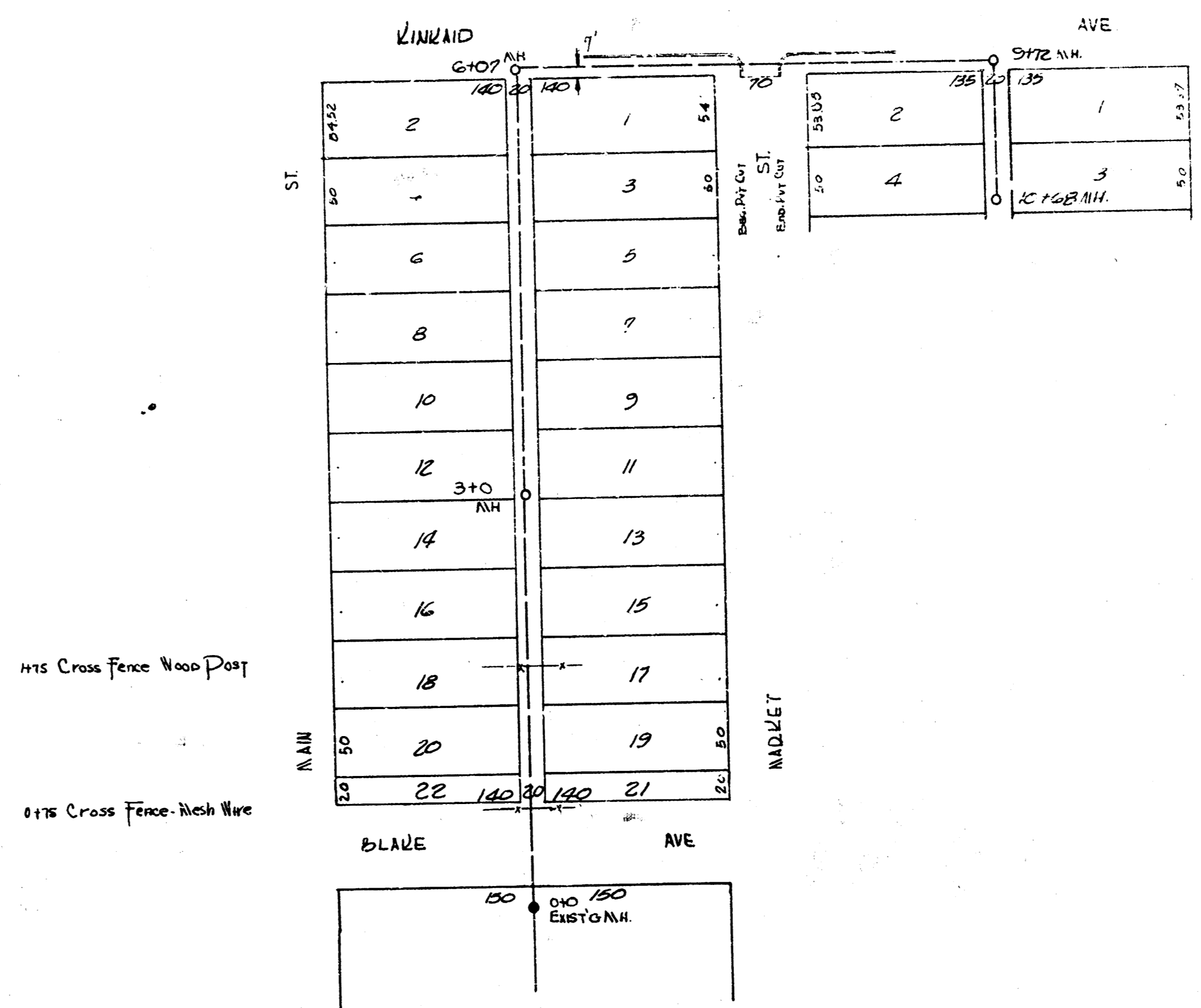
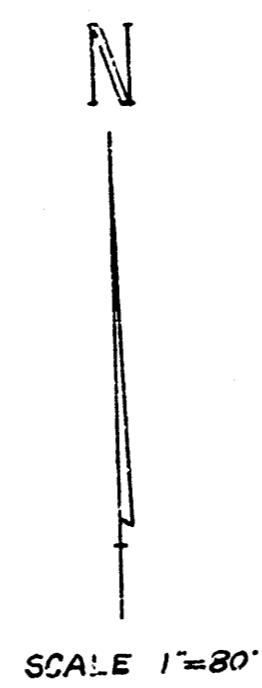
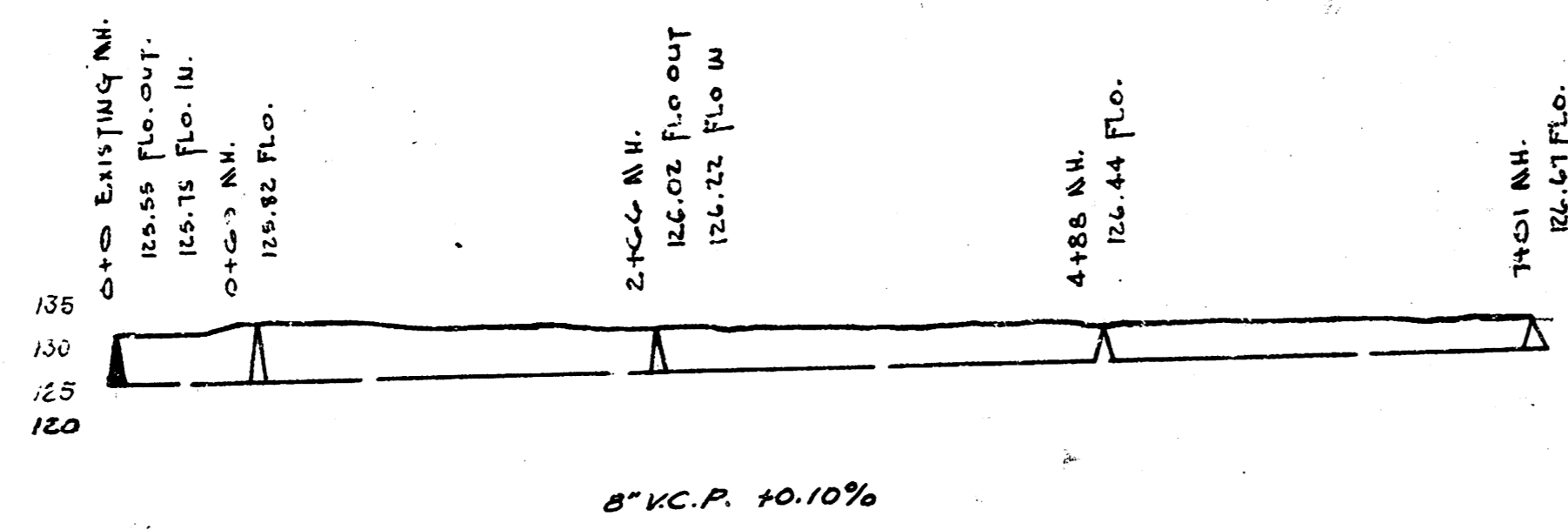


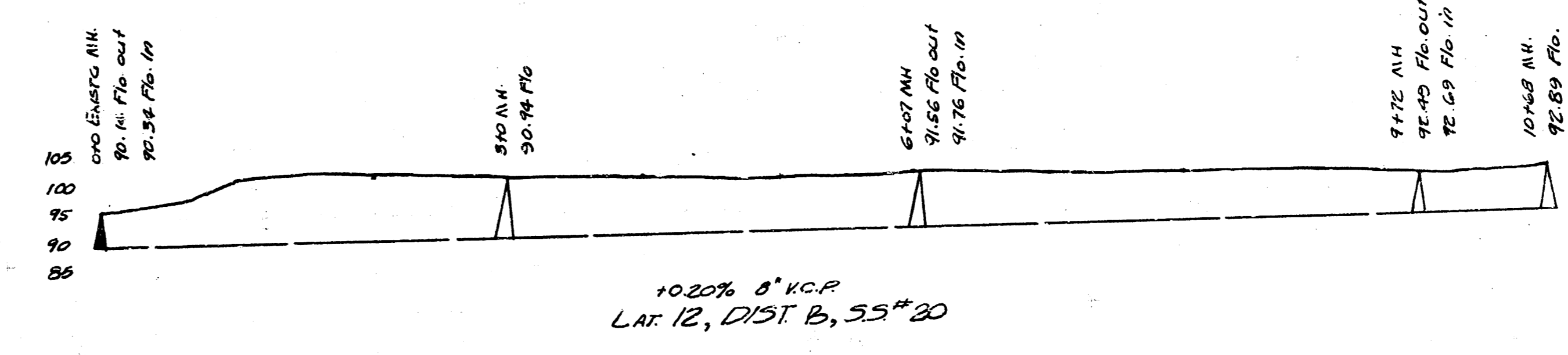
B.M. 11725 Std. N.E. Cor. 17TH & Hydraulic.



B.M. 11660 Iron N.L. Kinnard & Madget
So. Q. 1/4. N. 11 96.29



8" V.C.P. 10.10%
LAT. 16, DIST. T, SS* 12



10.20% 8" V.C.P.
LAT. 12, DIST. B, SS* 20
LAT. 12, DIST. T, SS* 12
CITY OF WICHITA, KANSAS
L.K. WHITE CITY ENGINEER
1949