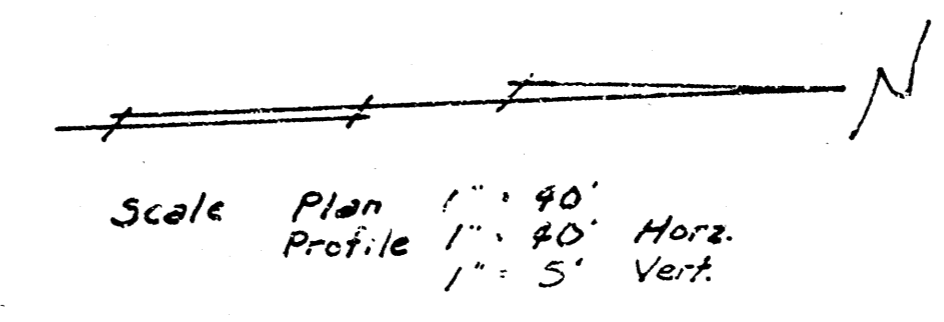
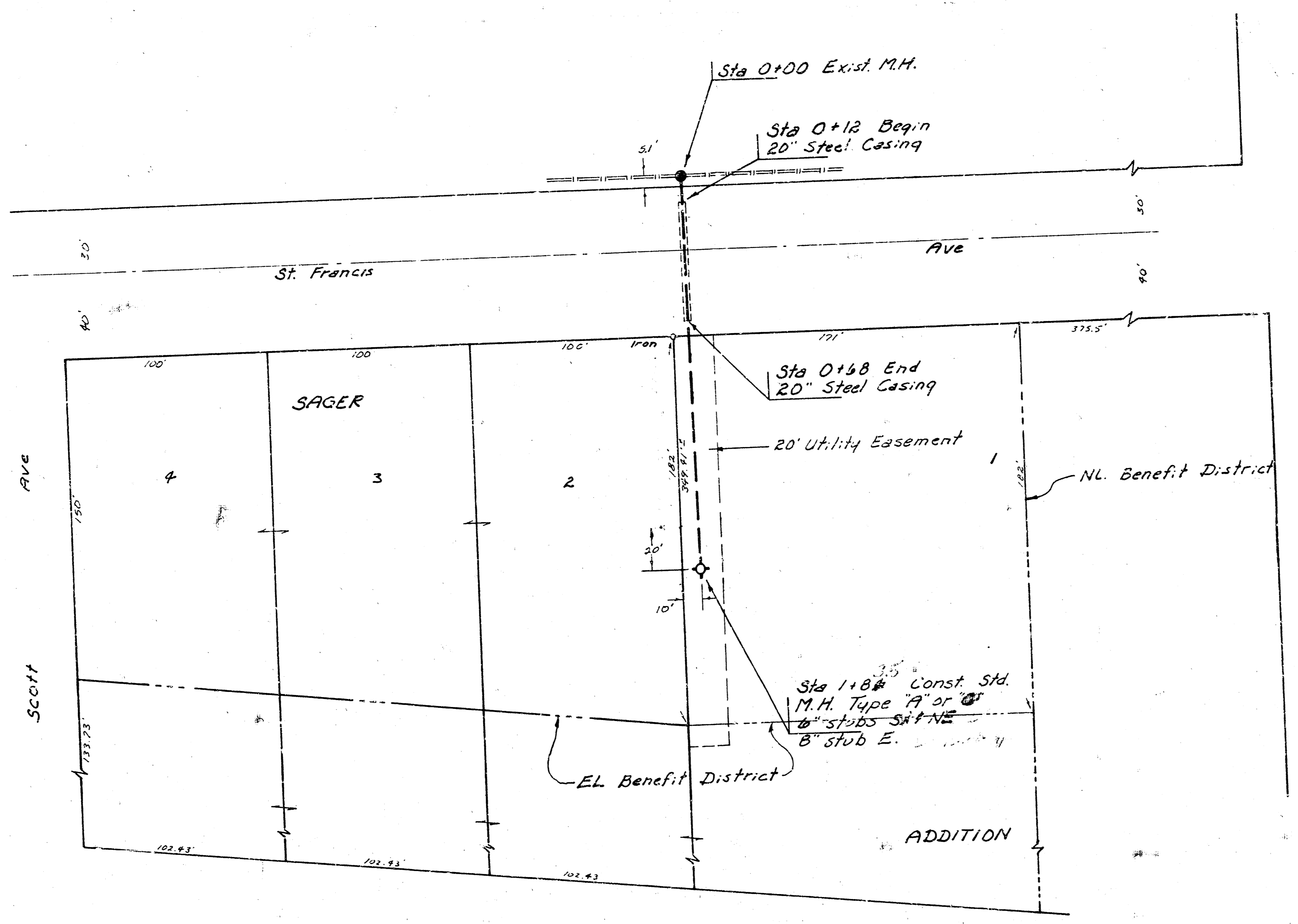
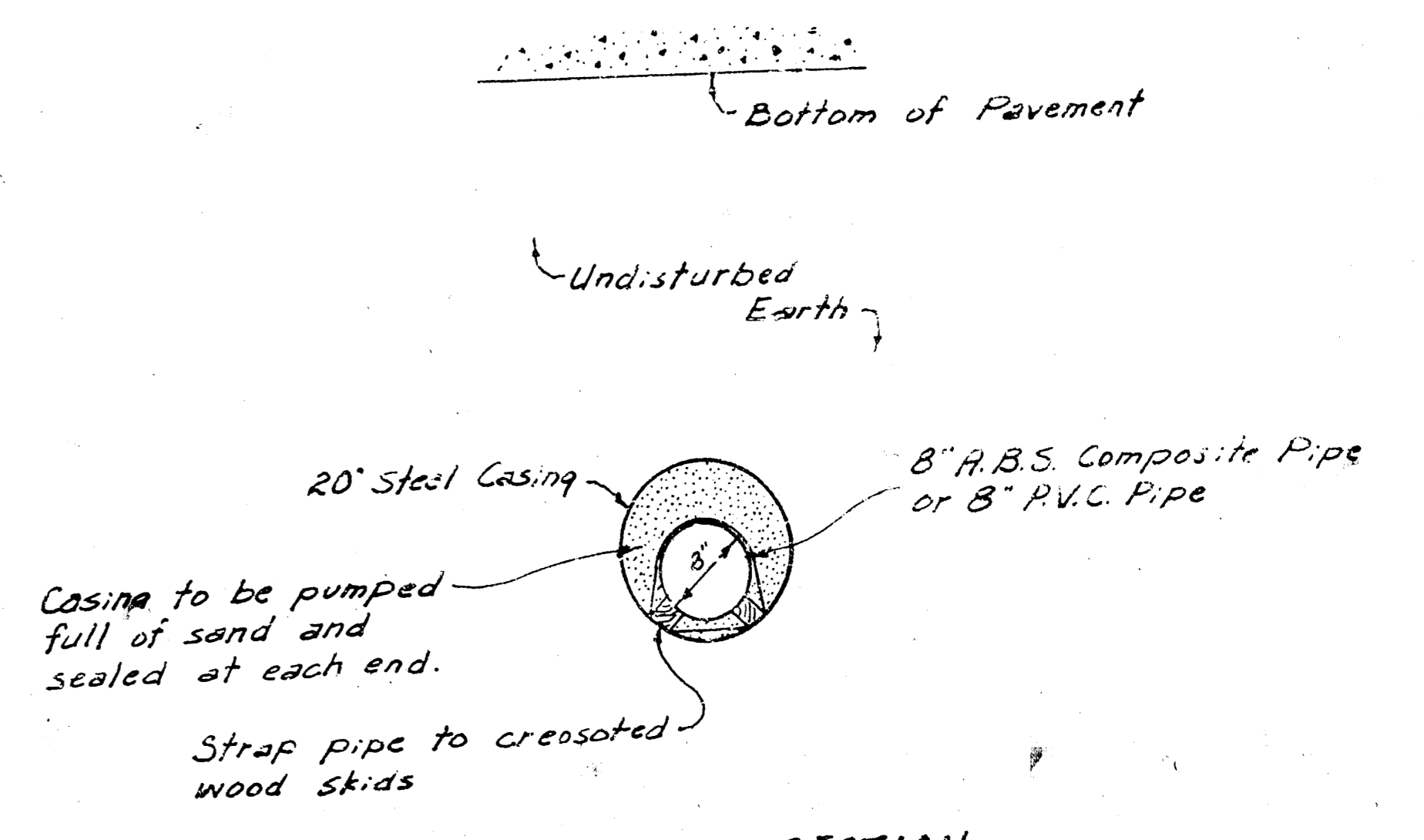


W. Manning  
K. Loomis  
4-77  
NSI-14



B.M. 9762 Washington & Pawnee, Brass Rod  
in conc. post, 26' N & 32.5' E. of E. both.  
B.M. 101.21 "a" tip conc. base Light Tower 68.5'  
N. of St. Karkaid Park Addn. & 67.3' W.  
of W.L. St. Francis Ave.  
B.M. 9217 "a" cut on top curb on E. side  
St. Francis approx. 25' N of Drive of  
Building #2492 St. Francis.



TYPICAL SECTION  
Casing under Pavement Sta 0+12 to Sta 0+68  
No Scale

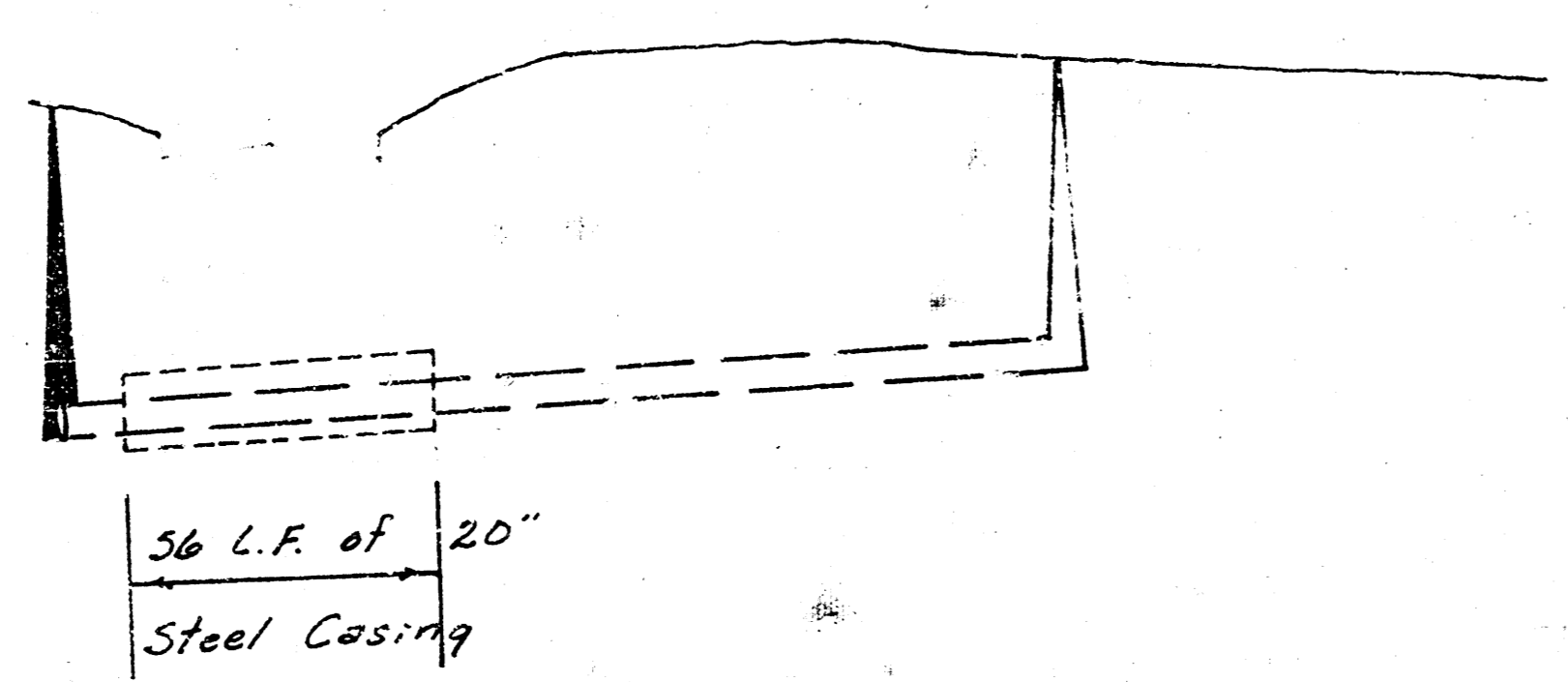
Casing to be placed by boring and  
jacking as per specifications.

Sta 0+00  
Exist. M.H.  
Sta 0+12 Begin  
20\"/>

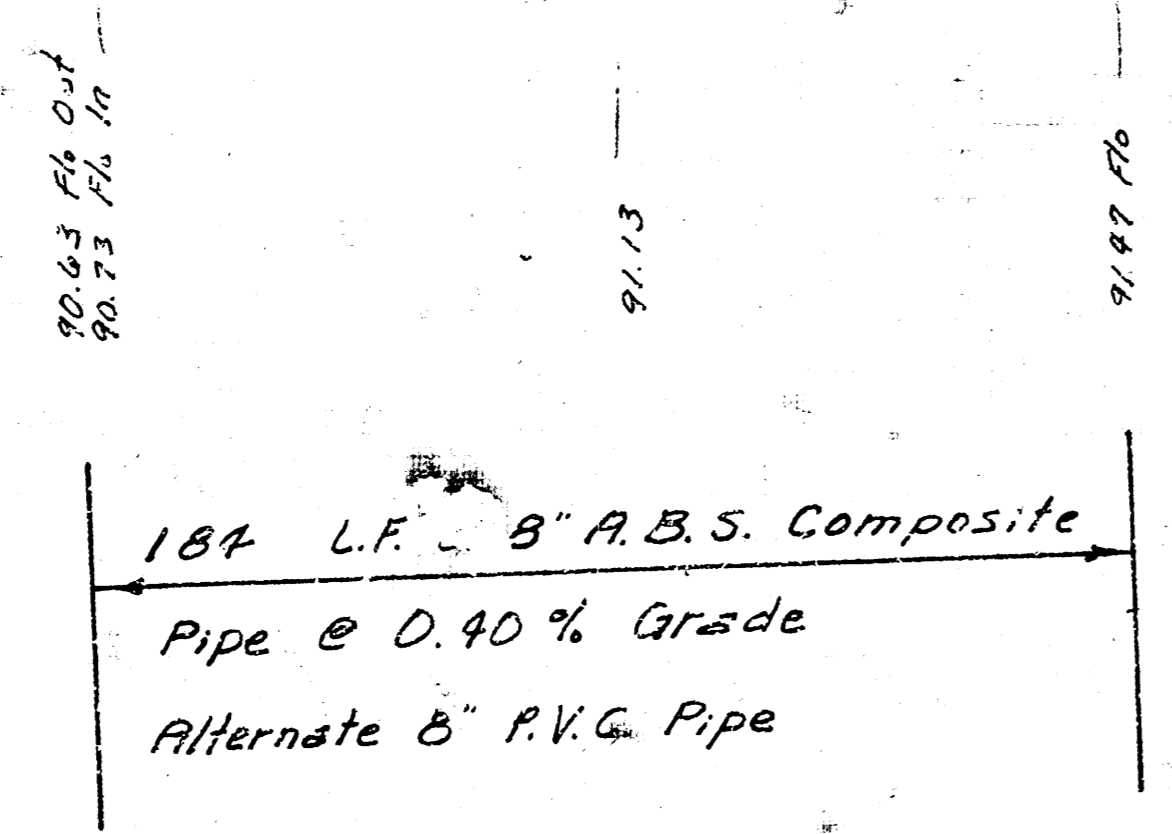
Sta 0+68 End  
20\"/>

Sta 1+08 Const. Std.  
M.H. Type "A" or "B"  
6\"/>

100  
95  
90  
85



100  
95  
90  
85



0 1 2 3

LAT 27, DIST. B, SANITARY SEWER NO. 20  
CITY OF WICHITA, KANSAS  
R. W. LINN — CITY ENGINEER  
DATE PROJ. NO. 46876245-80169-00000001