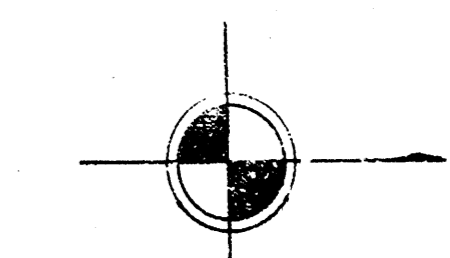
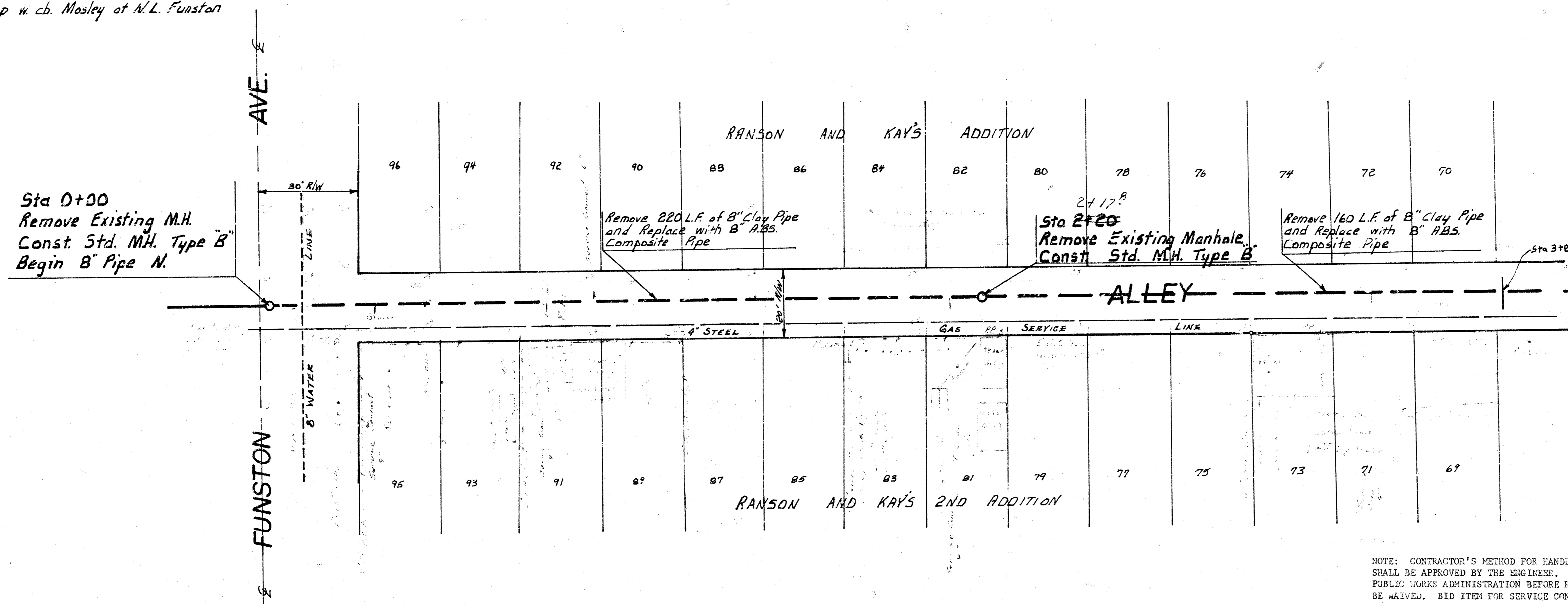
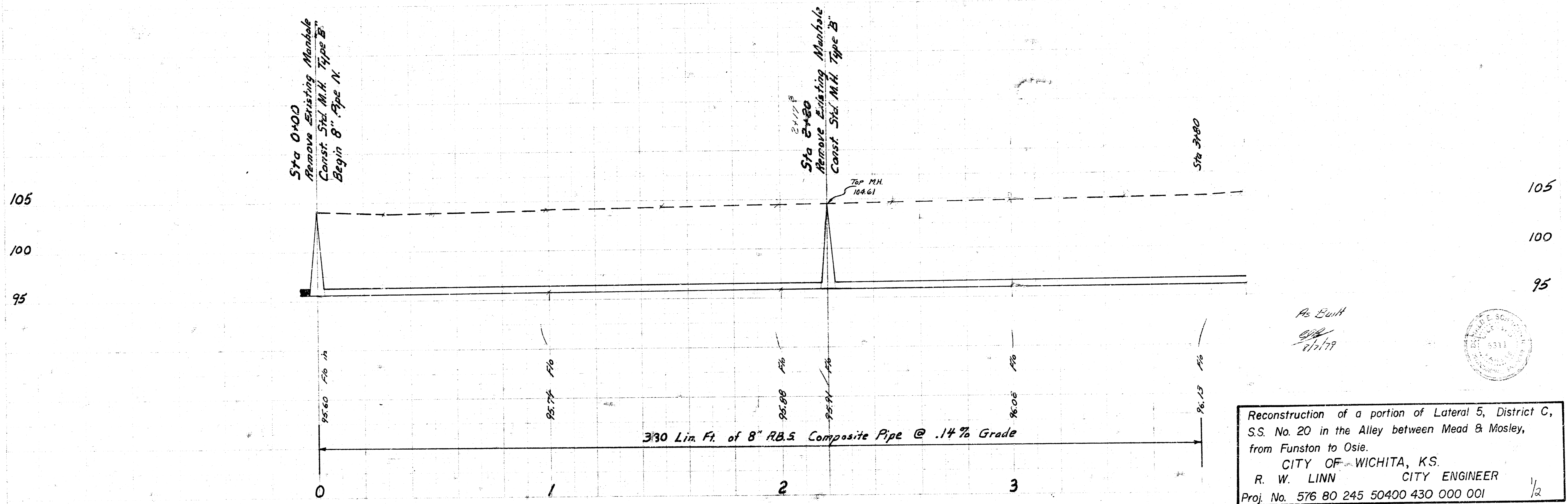


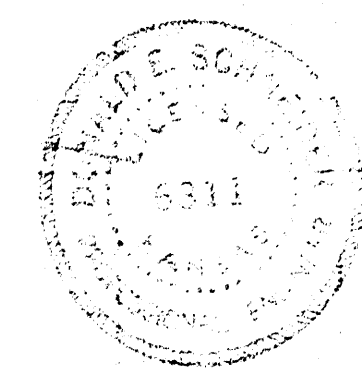
BM 103.08 "G" Globe on S. Rad. of Dr. - House No. 1855 South Mosley
 BM 100.45 City Std. N.E. corner Mt Vernon & Washington
 BM 103.72 "H" top w. ch. Mosley at N.L. Funston

 N
 Plan Scale 1" = 20'
 Profile Scale 1" = 20' Horiz.
 1" = 5' Vert.

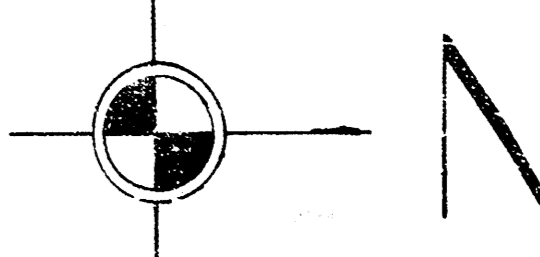


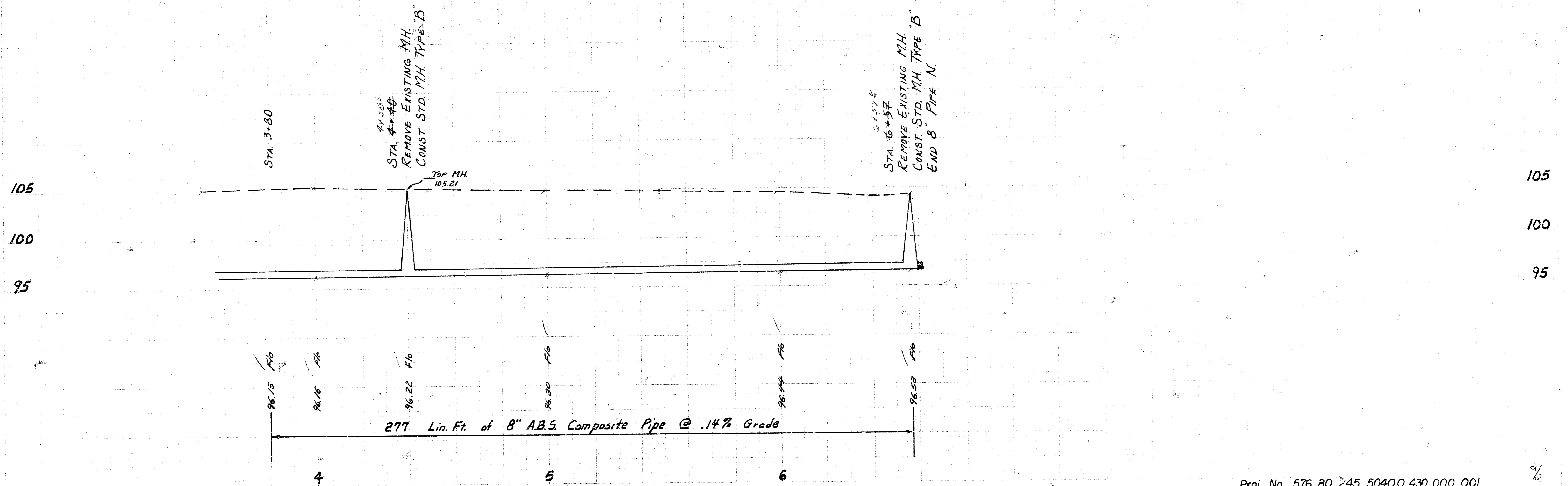
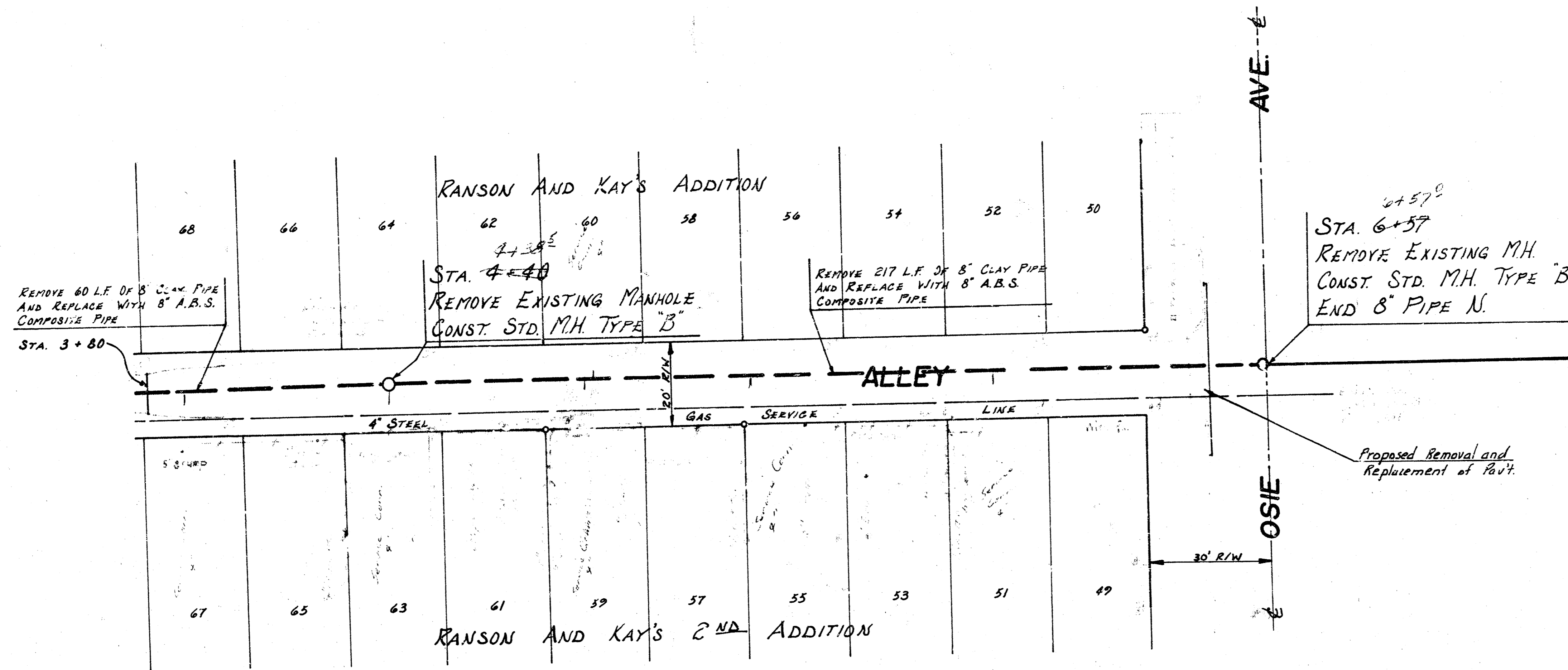
NOTE: CONTRACTOR'S METHOD FOR HANDLING SEWAGE FLOW DURING CONSTRUCTION OF THIS PROJECT SHALL BE APPROVED BY THE ENGINEER. CONTRACTOR WILL BE REQUIRED TO OBTAIN PERMITS FROM PUBLIC WORKS ADMINISTRATION BEFORE RECONNECTING BUILDING SERVICE LINES. PERMIT FEE WILL BE WAIVED. BID ITEM FOR SERVICE CONNECTIONS SHALL COVER ALL COSTS FOR FURNISHING AND INSTALLING SADDLE INCLUDING TAPPING FEE. PIPE TAPS ARE TO BE MADE BY CITY MAINTENANCE DEPARTMENT PERSONNEL UNLESS APPROVED OTHERWISE BY THE ENGINEER. ONLY ACTIVE BUILDING SANITARY SEWER LINES ARE TO BE RECONNECTED TO THE NEW SEWER. CONTRACTOR SHALL VERIFY WHICH LINES ARE ACTIVE.



As Built
 8/1/79

Reconstruction of a portion of Lateral 5, District C, S.S. No. 20 in the Alley between Mead & Mosley, from Funston to Osie.
 CITY OF WICHITA, KS.
 R. W. LINN CITY ENGINEER
 Proj. No. 576 80 245 50400 430 000 001 1/2

B.M. 100.48 N.W. cor. conc. porch 2010 South Hydraulic (Apt. House)
 B.M. 107.46 "a" top South curb Osie at W.L. Masley
 B.M. 103.33 S.E. Cor. conc. porch House No. 1224 Mt Vernon
 N.W. cor. Mt. Vernon + Pattie

 N
 Plan Scale 1" = 20'
 Profile Scale 1" = 20' Horz.
 1" = 5' Vert.



Proj. No. 576 80 245 50400 430 000 001

4 3 5 4