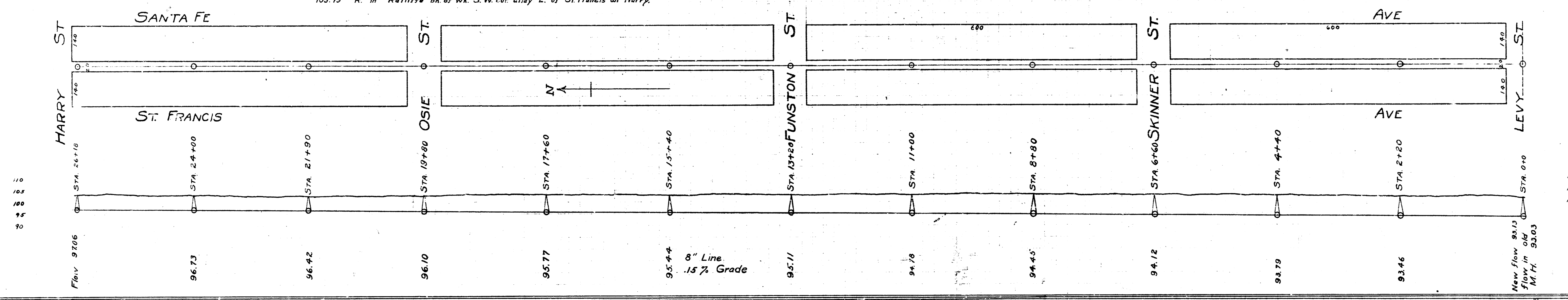


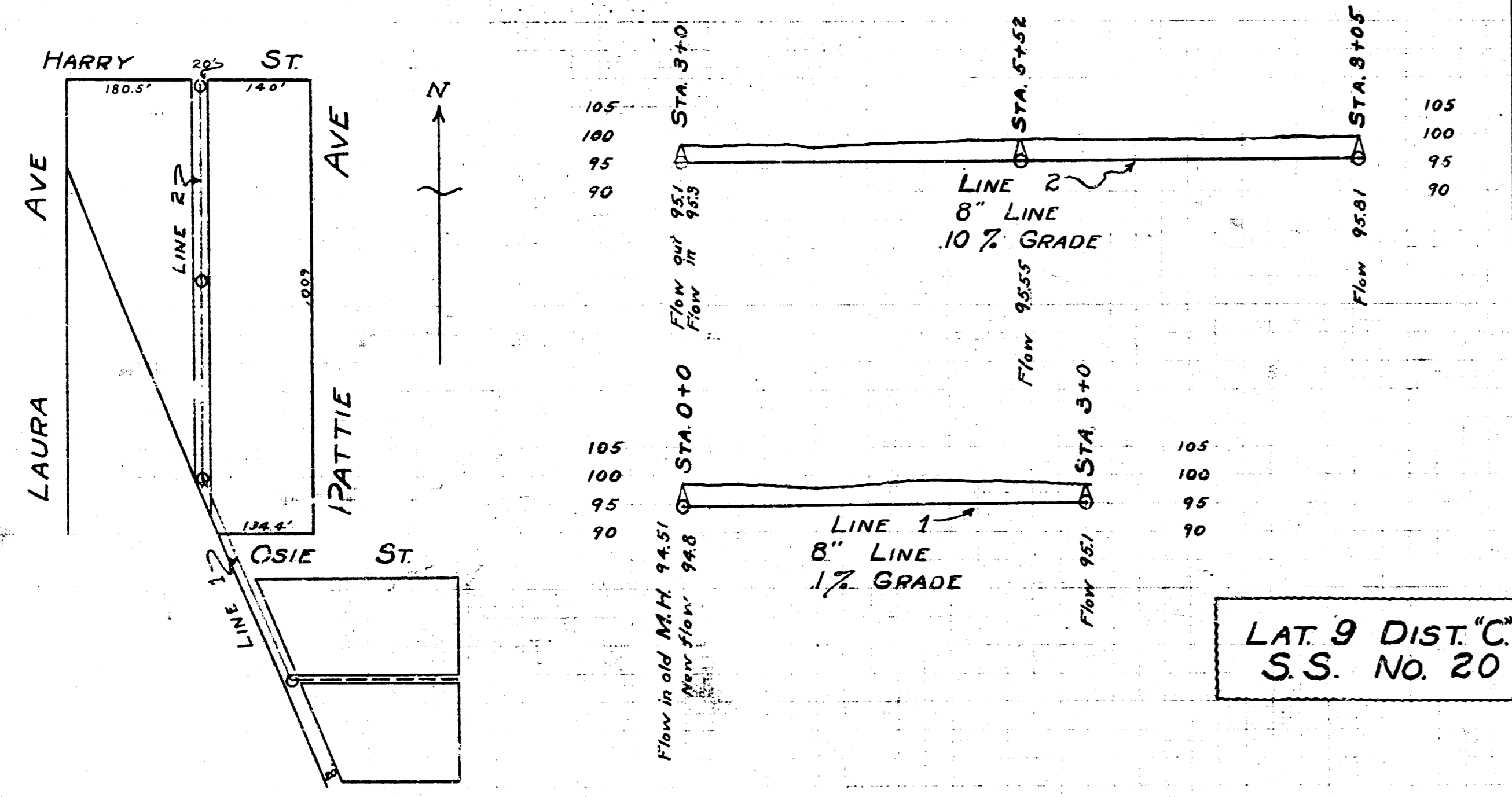
B.M. Elev 101.96 - J in Jones bk. of wk. N, N.E. cor Santa Fe & Levy.  
 103.79 R. in Ratliffe bk of wk. S.W. cor alley E. of St Francis on Harry.



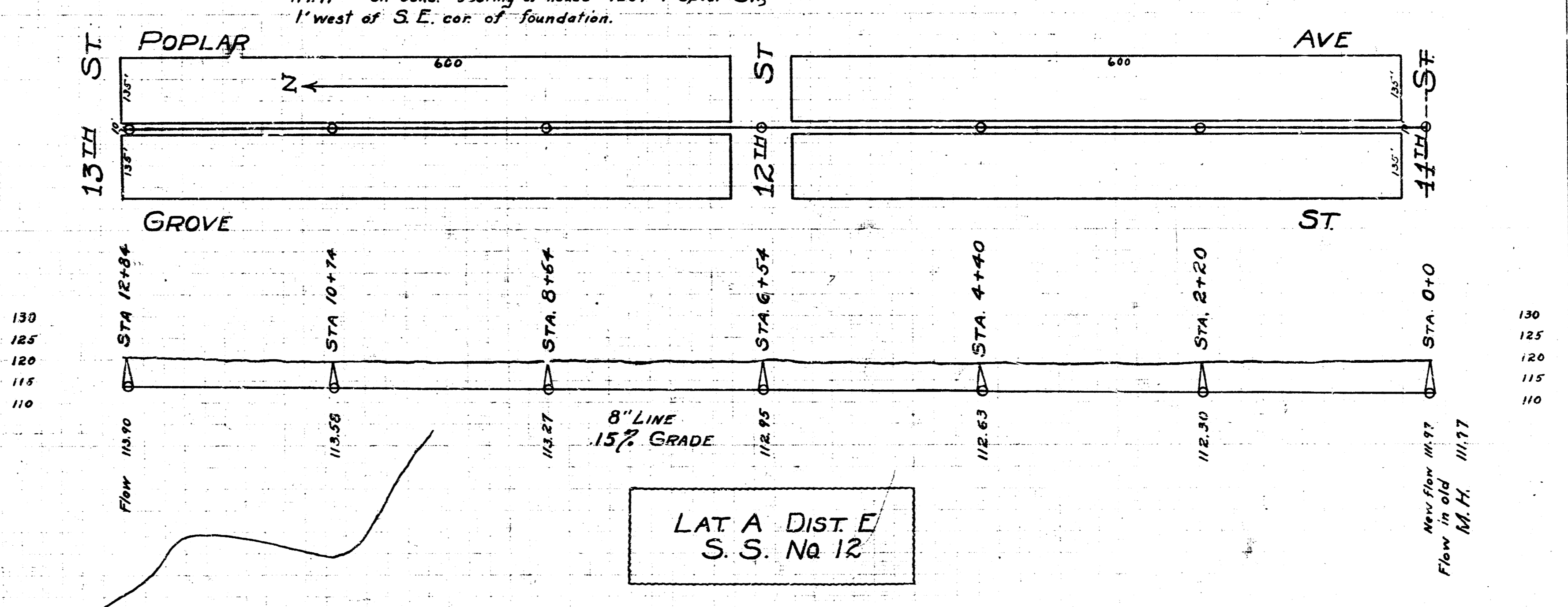
LAT B, DIST C  
 S.S. No 20

B.M. Elev 99.21 M in Milburn bk of wk. N.W. cor Pattie & Osie

B.M. Elev 112012 Iron in thimble ctr of both Grove & 13th  
 112.91 on conc. footing of house 1201 Poplar St,  
 1' west of S.E. cor. of foundation.

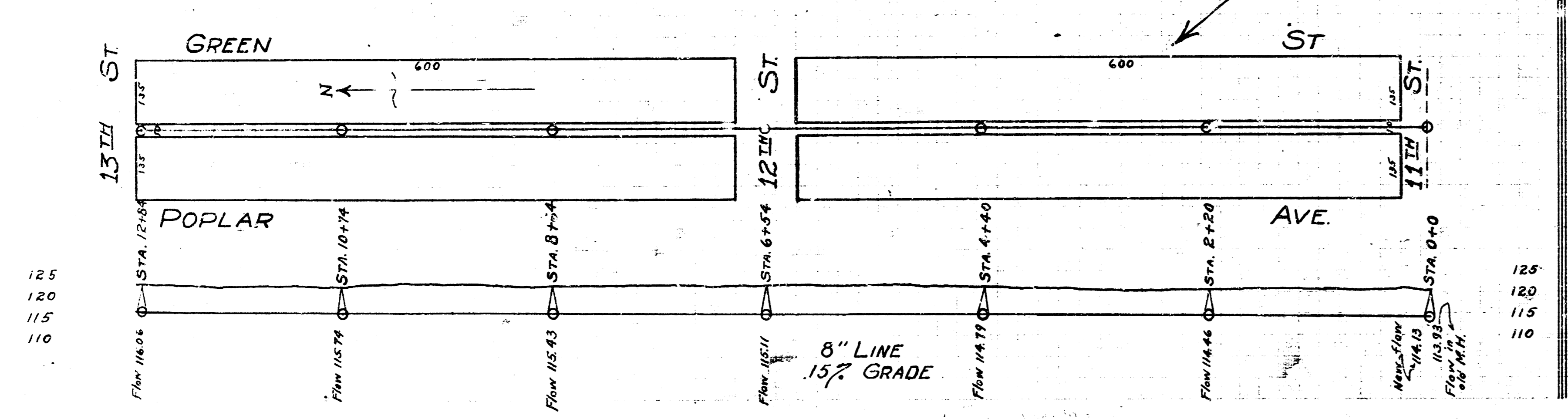


LAT 9 DIST C  
 S.S. No 20



LAT A DIST E  
 S.S. No 12

B.M. Elev 117.11 + on curb ref E, S.E. cor Madison & 13th



LAT H-DIST O  
 S.S. No 12

