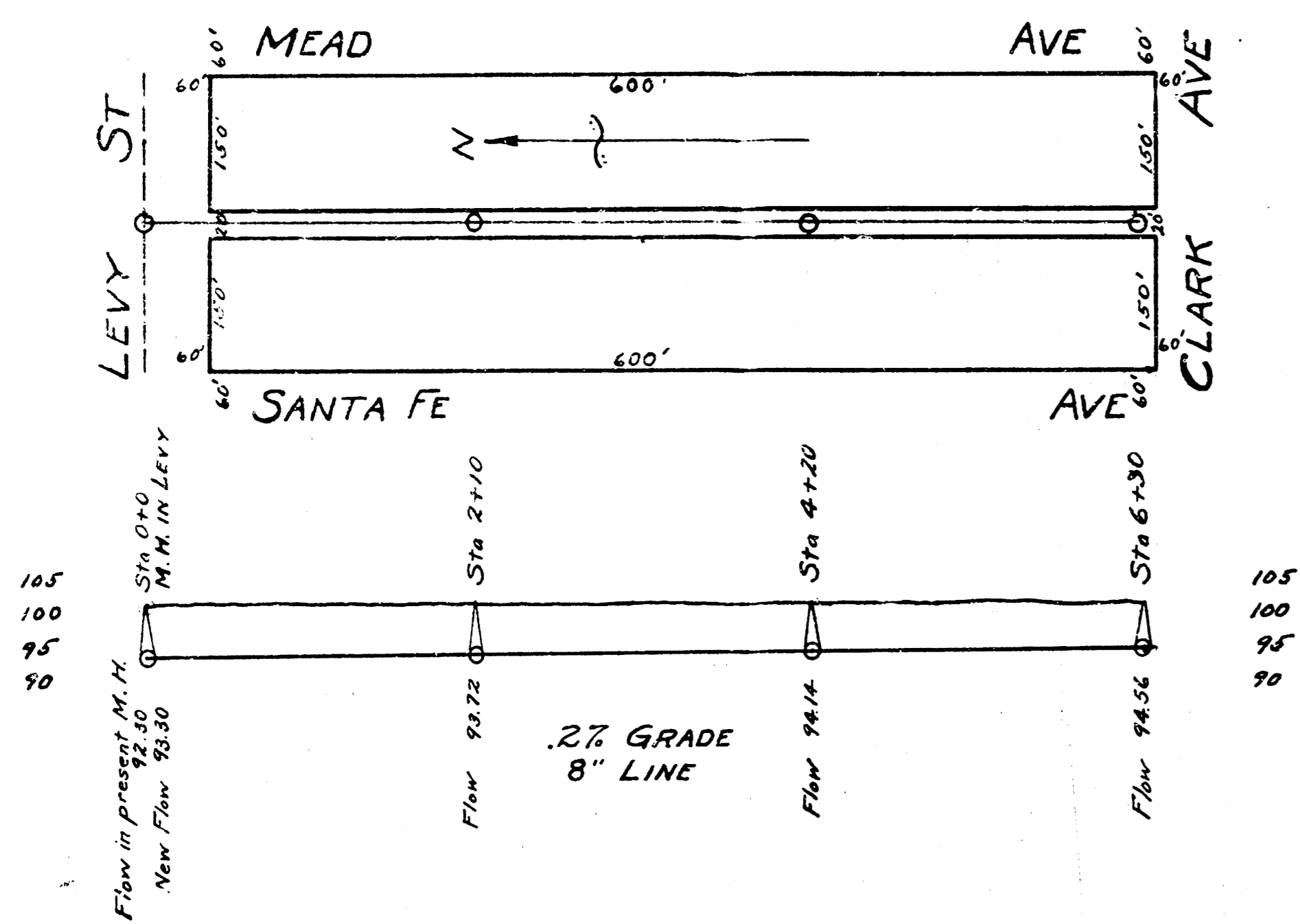
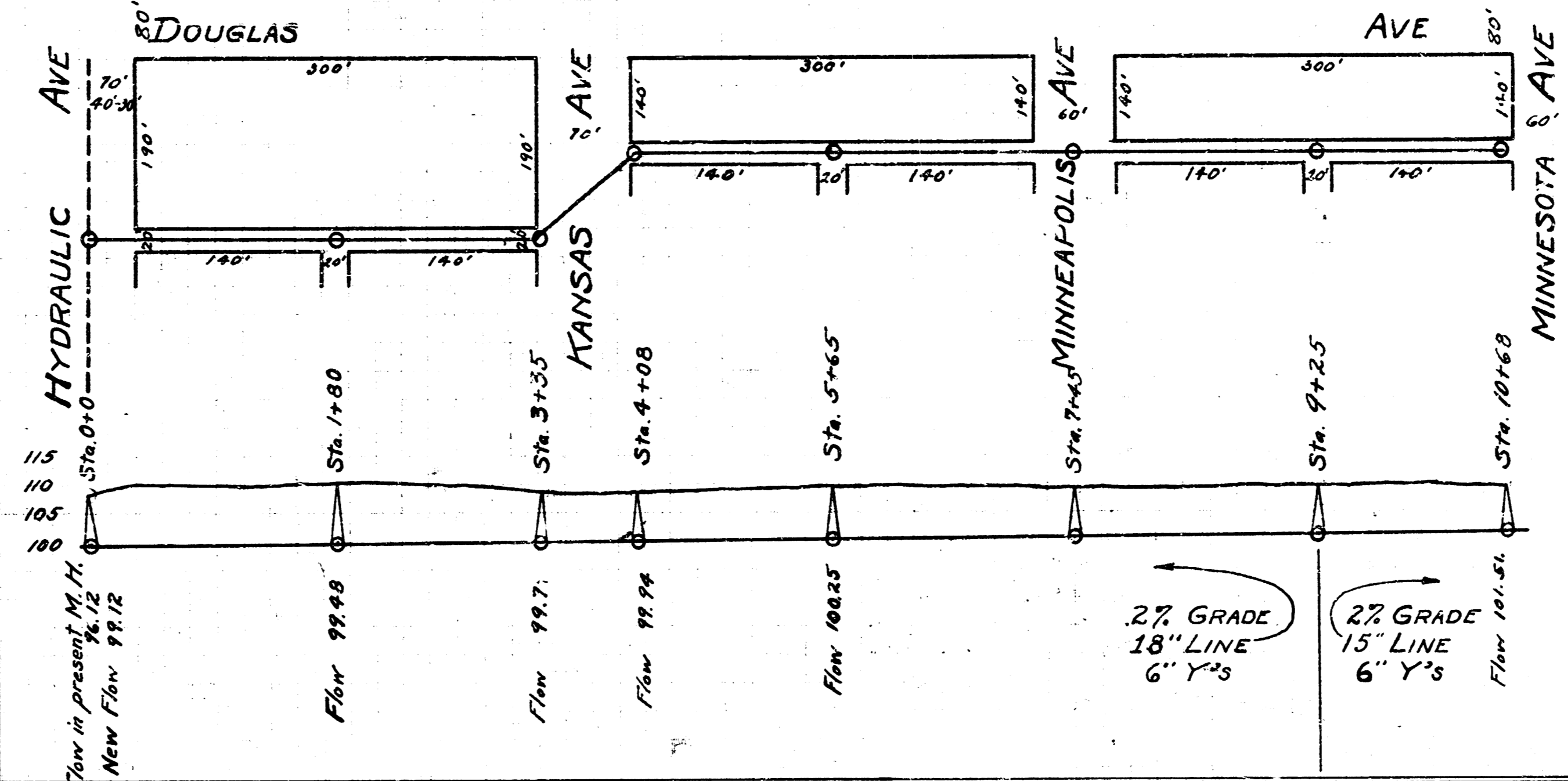


B.M. Elev. 101.94 - J in Jones back of walk N. N.E. cor. Santa Fe & Levy.



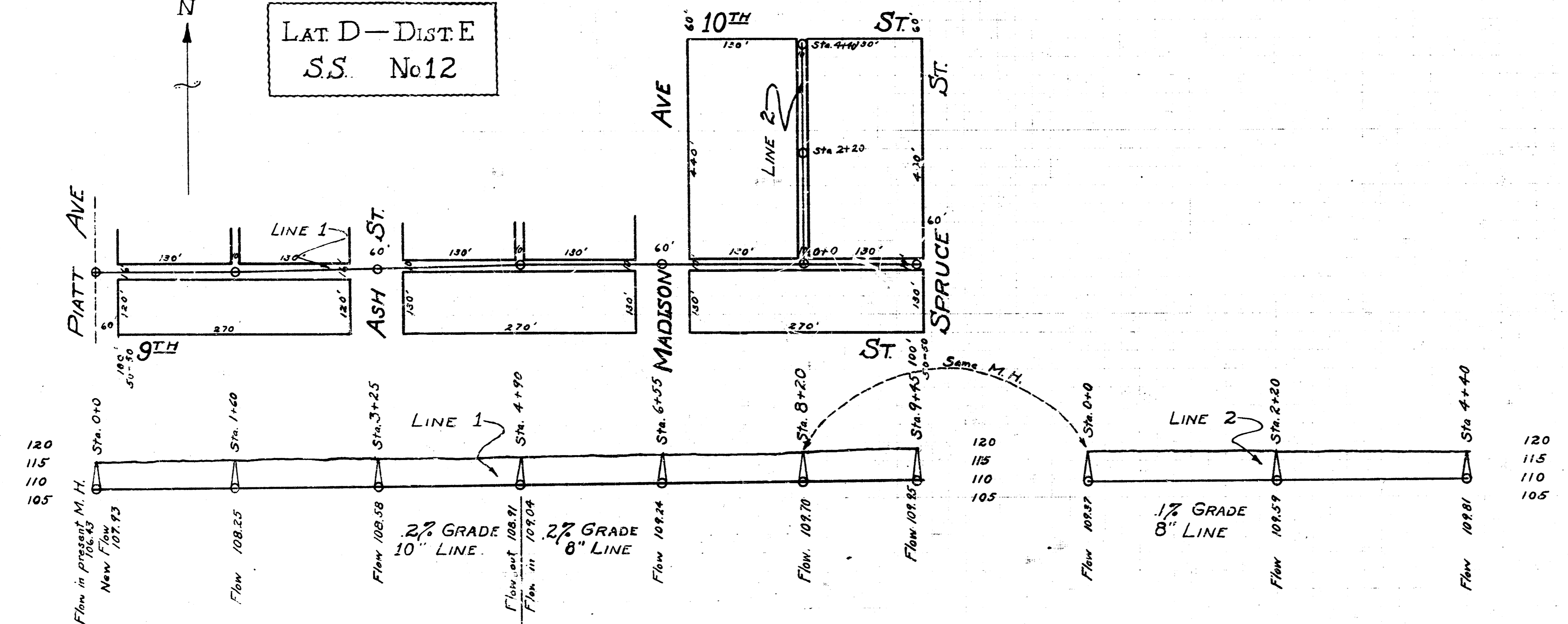
LAT 12 - DIST C.
S.S. No. 20.

B.M. Elev. 108.90 Standard S.E. cor. Douglas & Hydraulic.



LAT 1 - DIST K
S.S. No. 20.

B.M. Elev. 115.31 B in Ball etc. of walk N.-N.W. cor. Pratt & 9th.



LAT D - DIST E
S.S. No. 12.