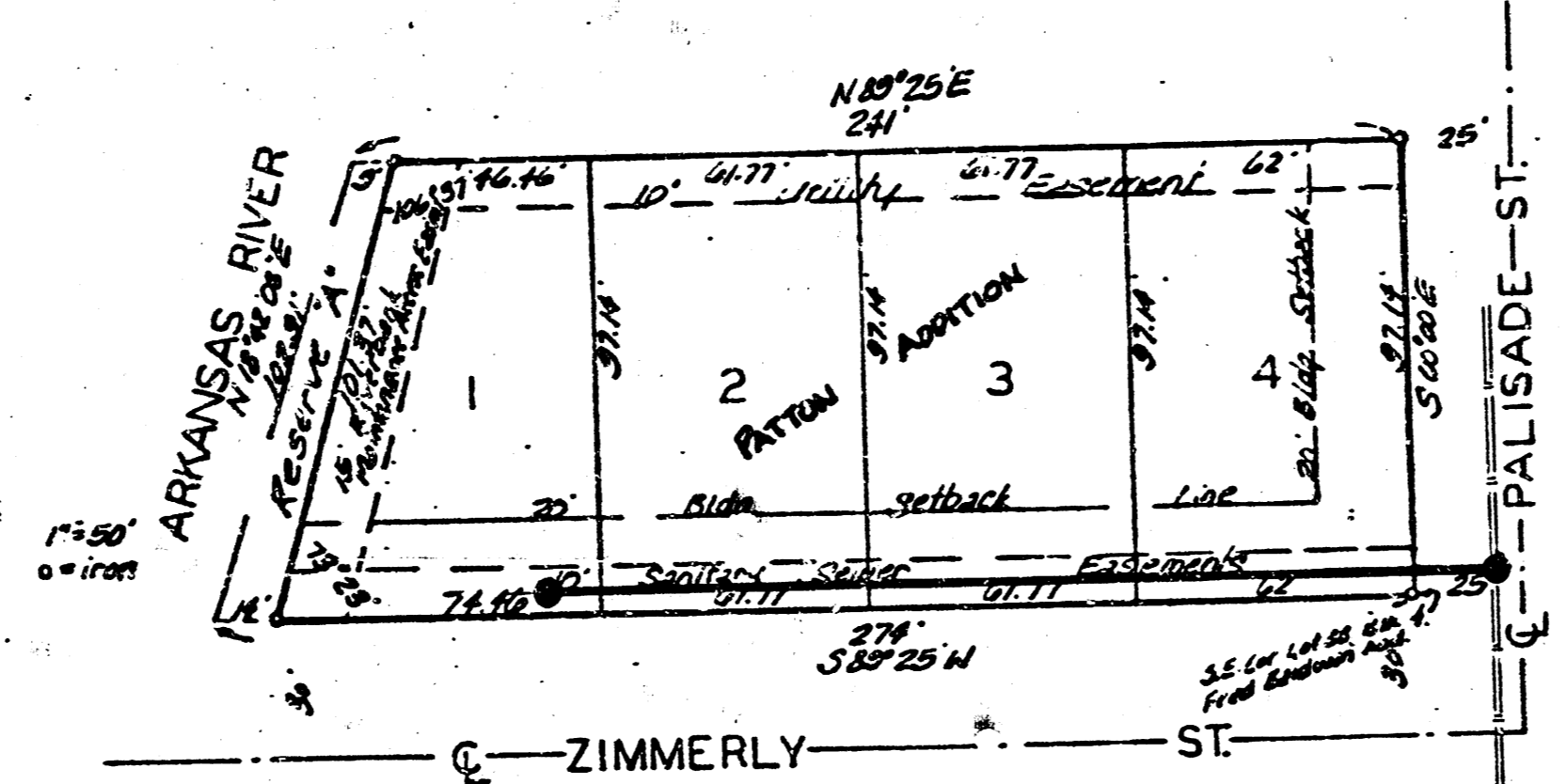


LATERAL 23 DISTRICT 'C' S.S. 20

PROJECT NO. 468-76-245-81266-000-000-001

*As Built
S.L.
8-89*



BENEFIT DISTRICT

CITY OF WICHITA, KANSAS

MIKE E. LINDEBAK

CITY ENGINEER



JUNE 1984

BAUGHMAN COMPANY, P.A.
SURVEYING & ENGINEERING
316/262-7271 • 330 LAURA • WICHITA, KANSAS 67211

BENCH MARK: CITY BENCH MARK DISC, 6 FT. WEST AND 10 FT. SOUTH OF S.E. CORNER OF GOLD AND HARRY ST. ELEV. = 104.97 CITY DATUM

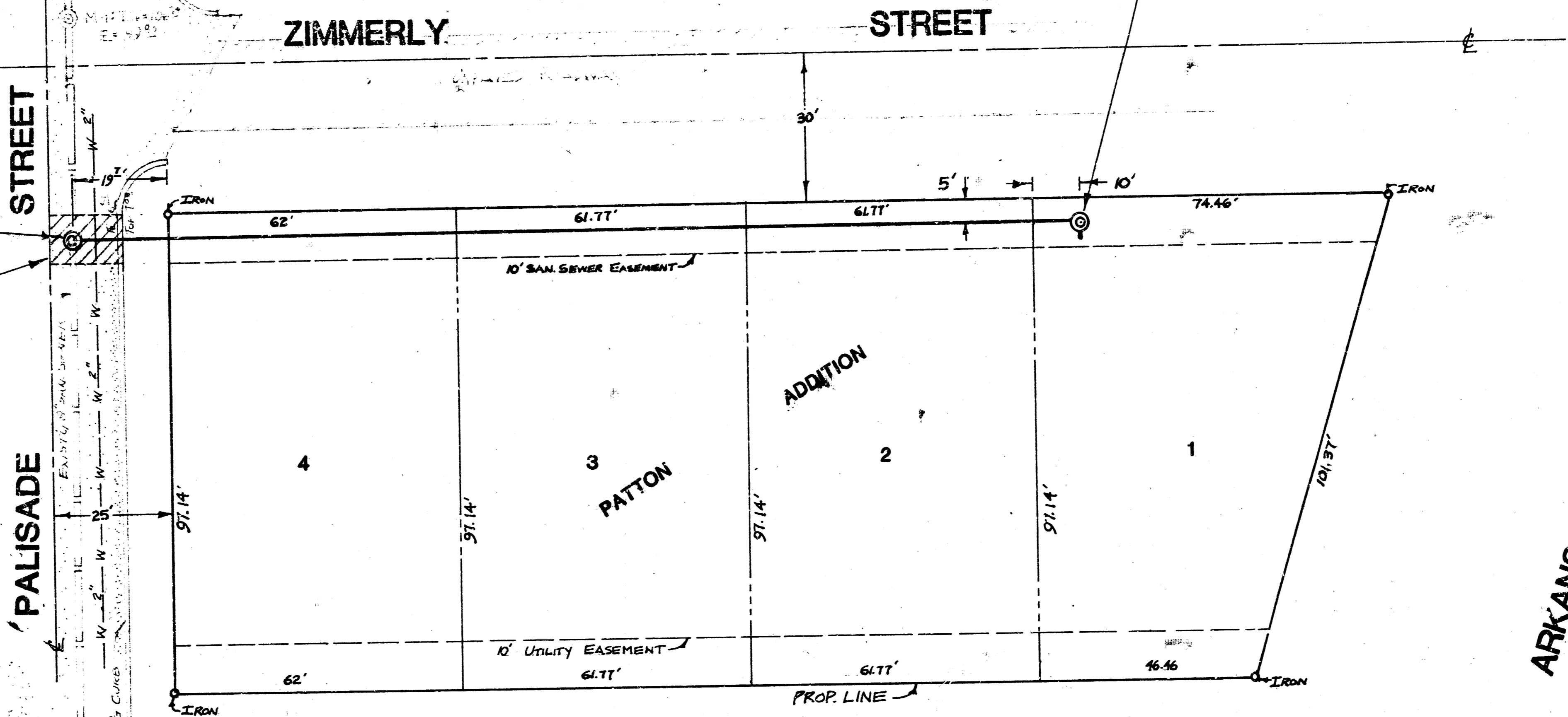
BENCH MARK: BENCH MARK SET ON 'M' OF M.F.C. ON FIRE HYDRANT AT S.W. CORNER OF INTERSECTION OF PALISADE AND ZIMMERLY STREETS ELEV. = 105.48 CITY DATUM

B.M. SET ON 'M' OF M.F.C. ON FIRE HYDRANT AT S.W. CORNER OF INTERSECTION ELEV. = 109.43 CITY DATUM

STATION 2+13.8
CONSTRUCT S.P.C. TYPE 'A' MANHOLE TOP = 105.36
4" STUB N.

STATION 0+00
CONSTRUCT STD. TYPE 'B' OR 'C' MANHOLE OVER EXISTING LINE TOP = 107.80

SAW JOINT, REMOVE AND REPLACE NECESSARY AMOUNT OF 6" REINFORCED CONCRETE PAVEMENT (REINFORCE WITH 6"x12" - W4X4 WWF)



As Built
J.L.L.
9-84

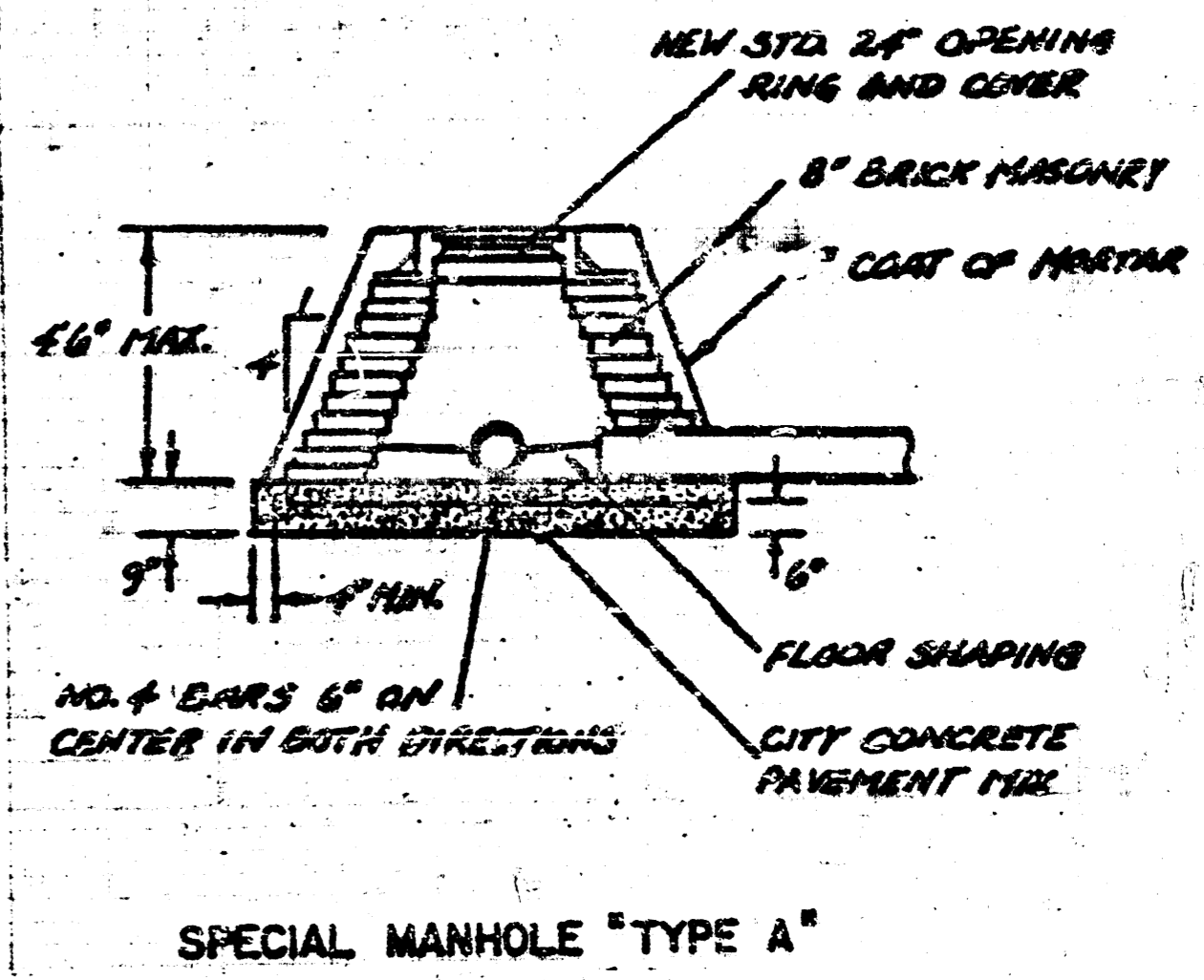
SCALE: 1" = 20' PLAN
1" = 20' PROFILE HORIZ.
1" = 5' PROFILE VERT.

GENERAL NOTES

The contractor shall be responsible for preserving property irons. The contractor shall be required to re-establish any property irons which are damaged or destroyed by his construction operations. Such irons shall be re-established by a licensed land surveyor or a professional engineer in accordance with state laws.

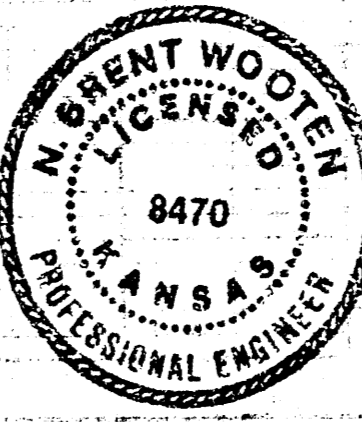
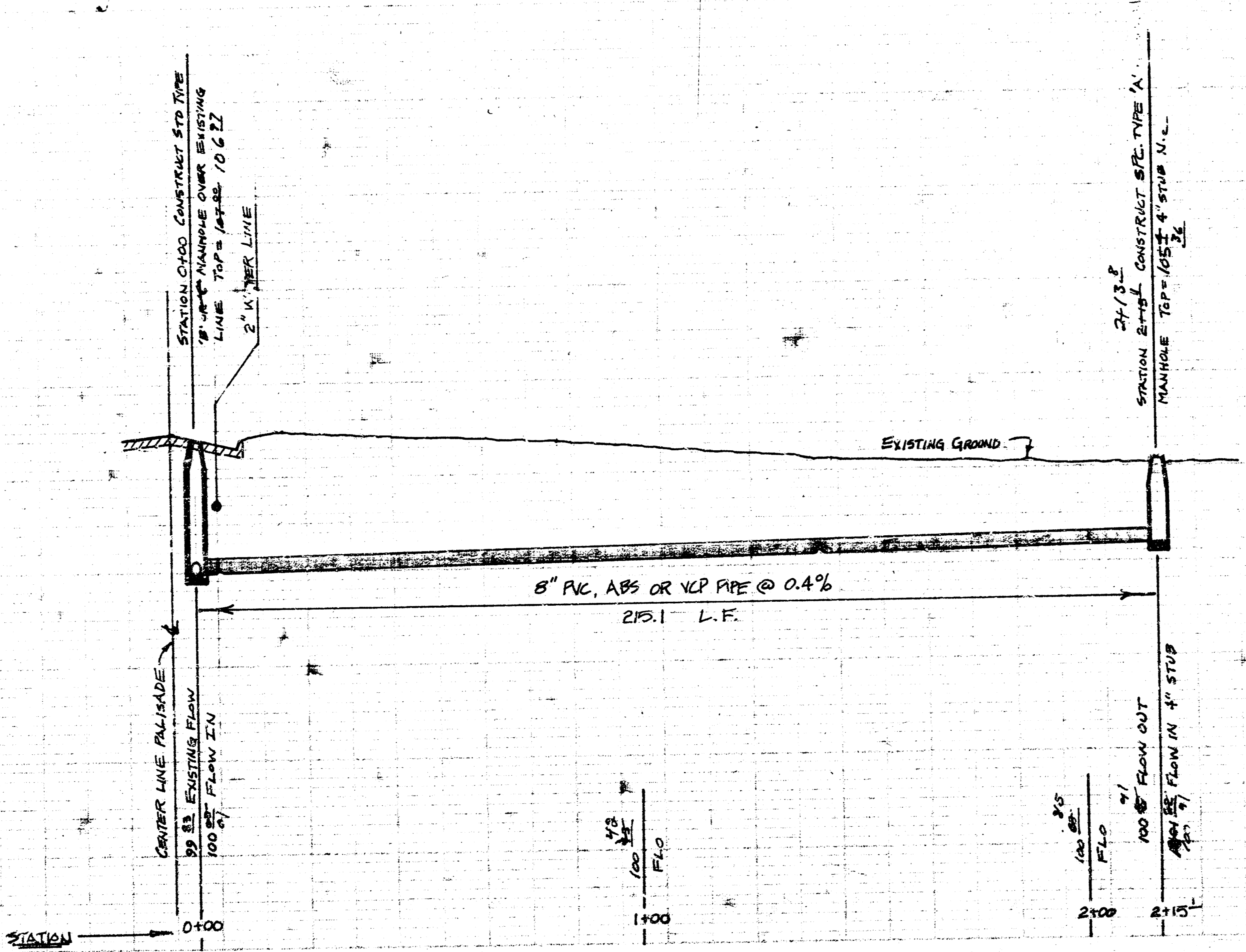
The contractor shall contact the utility companies for a field verification of any underground lines.

Removal of the existing pavement shall be at either existing joints or at a sawed joint where necessary. The sawed joint shall be considered as incidental to the bid item of 6" Concrete Pavement Removed and Replaced.



SPECIAL MANHOLE "TYPE A"

110
105
100
95



LATERAL 23 DISTRICT 'C' S.S. 20
PROJECT NO. 488-76-245-3*266-000-000-001

BAUGHMAN COMPANY, P.A.
SURVEYING & ENGINEERING
314/262-7271 • 330 LAURA • WICHITA, KANSAS 67211

14 8 4 A 2/20