

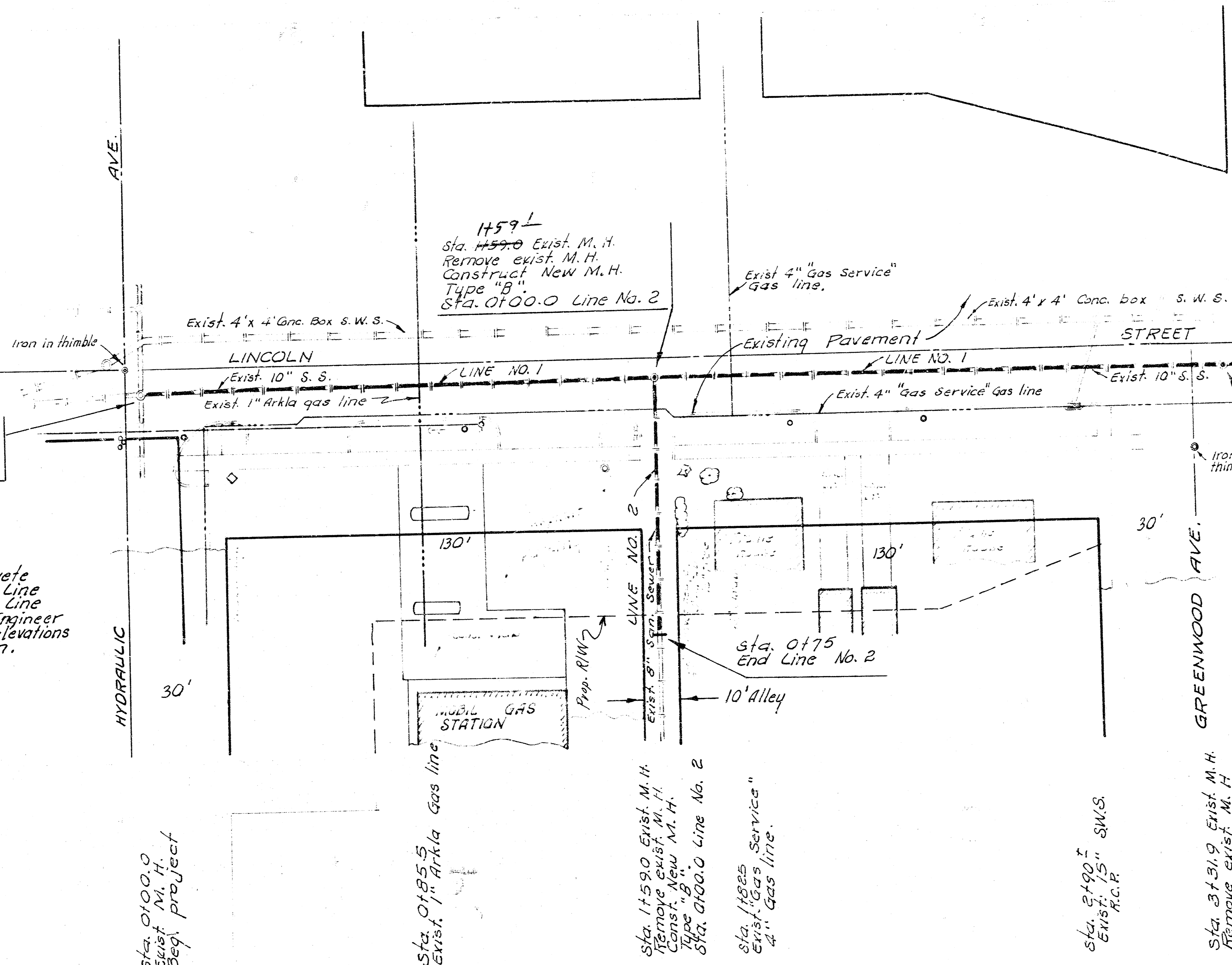
- B. M. 107.30 "D" in Dalton W. side int. "D" on S.E. cor. Ellis & Lincoln.
- B. M. 108.27 NW. conc. step. Apt. # 1501 E. Lincoln @ Ellis S.
- B. M. 107.49 R. R. Spike NE. side Elm tres on S.W. cor. Lincoln & Greenwood.
- B. M. 107.68 S. cor. of conc. base to mobil sign on N.W. cor. Lincoln & Hydraulic.

U. F. G. R. W.

229

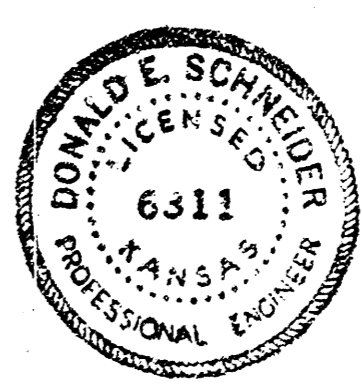
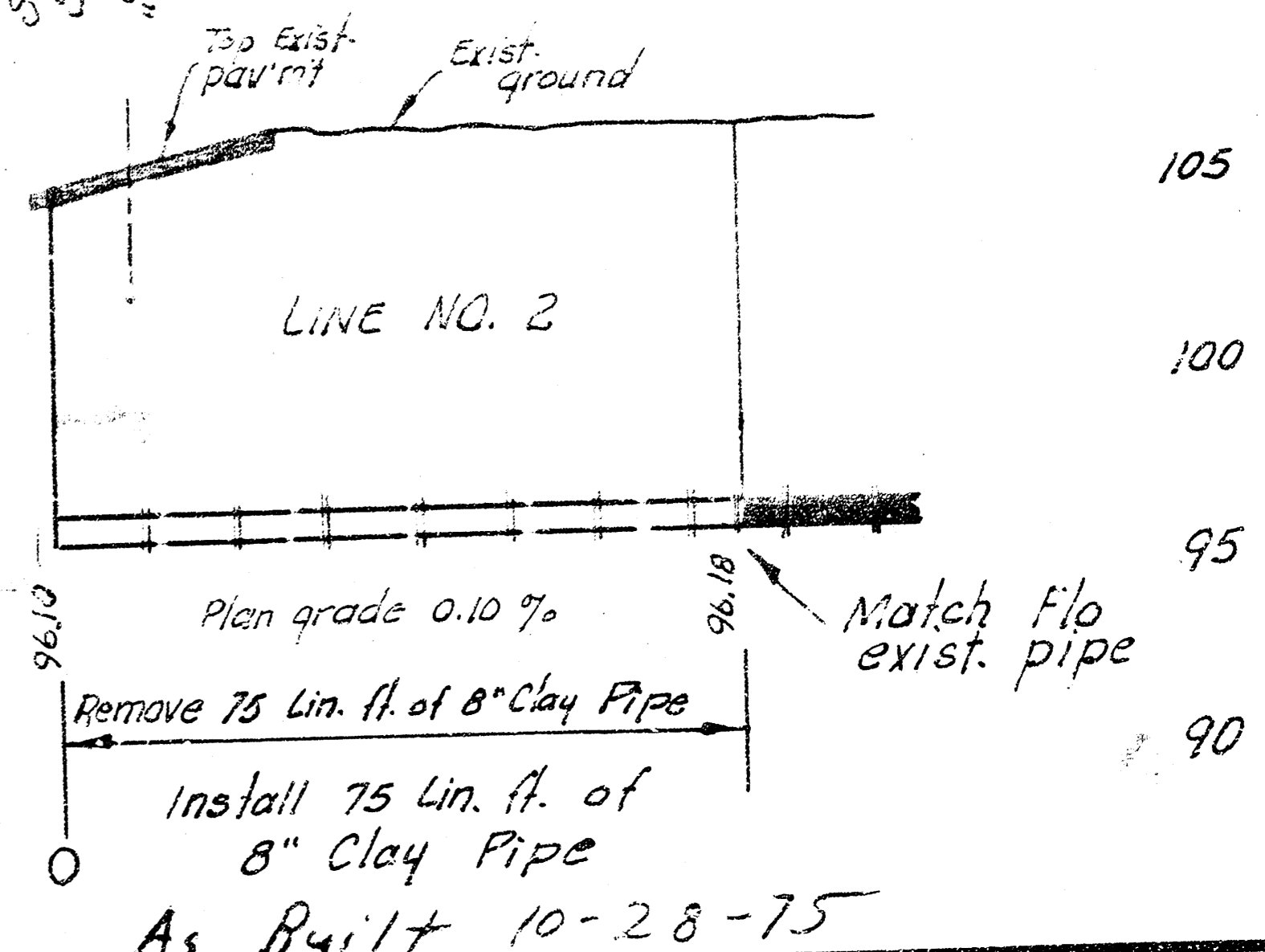
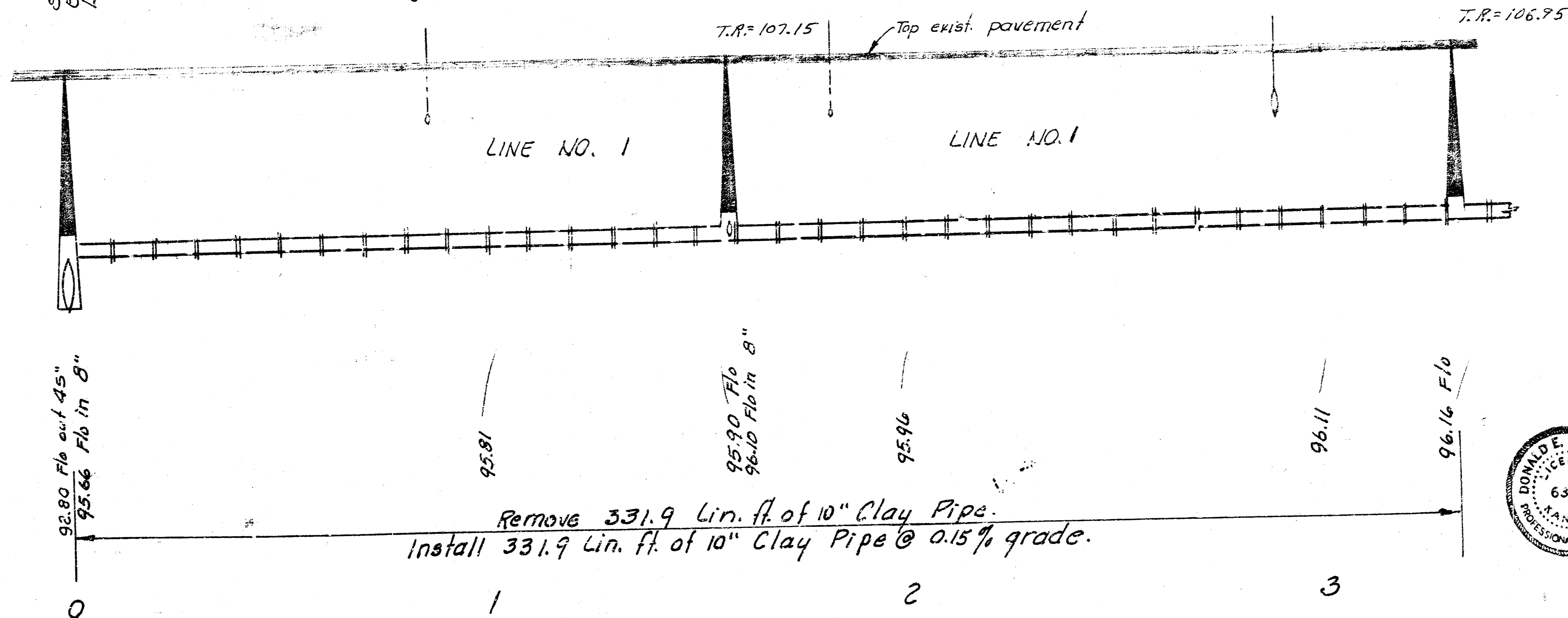
110
105
100
95
90

NOTE:
Contractor is to excavate pipe at Sta. 7130.0 Line No. 1 and Sta. 0750.0 Line No. 2 so that field Engineer can verify pipe Flo. elevations prior to construction.



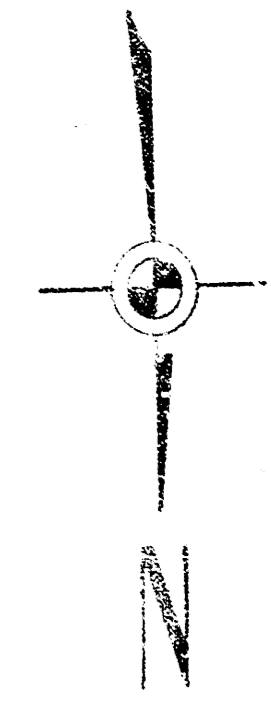
NOTE:
Do not replace pavement and storm water sewer leads. Sta. 0700.0 to Sta. 7125.0

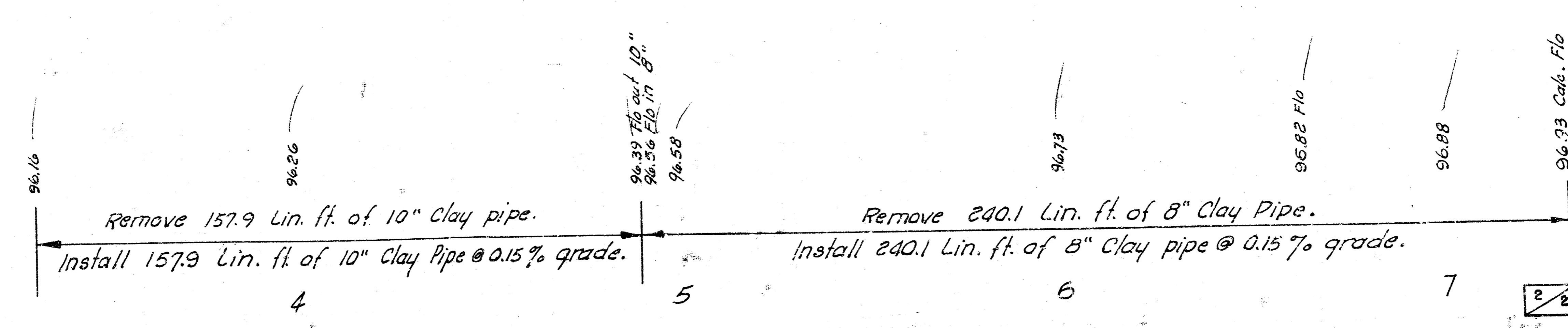
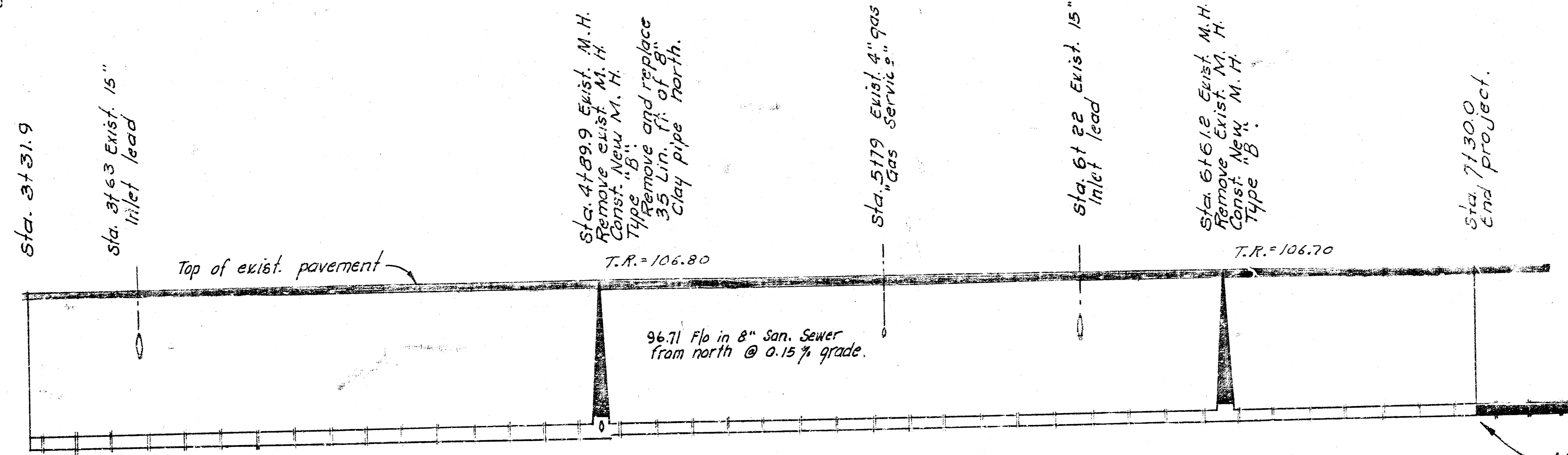
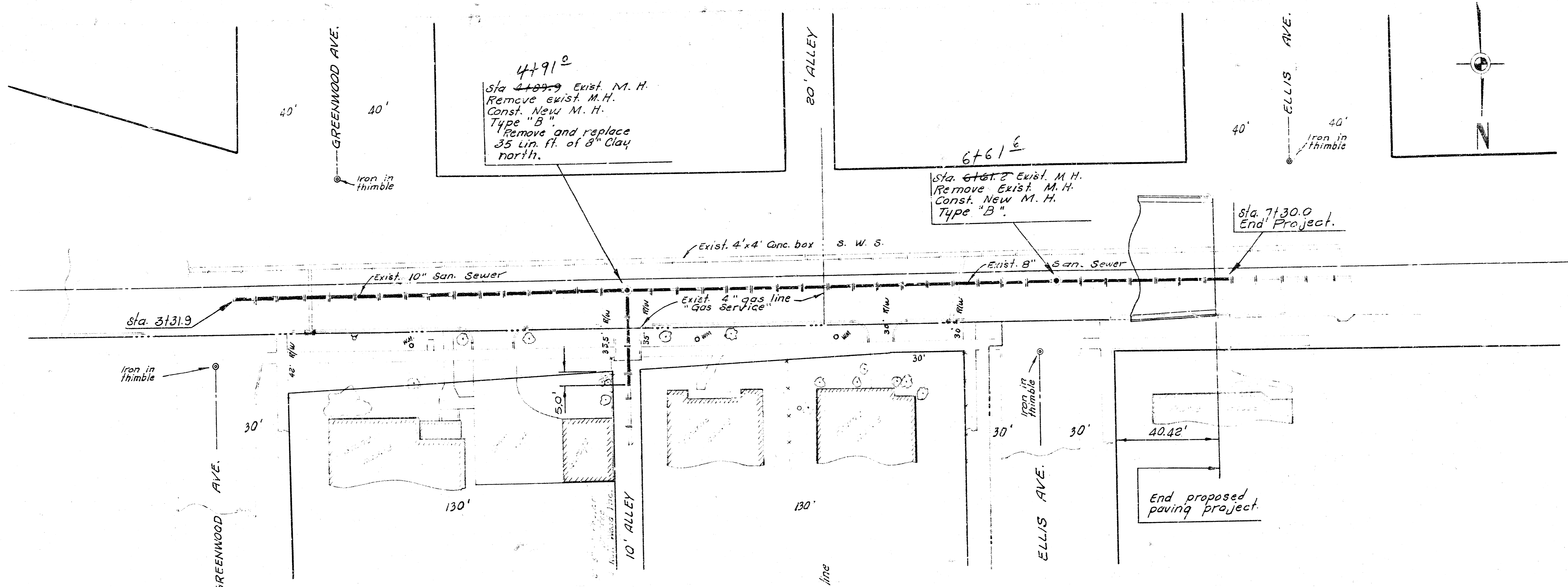
NOTE: JOINTS BETWEEN NEW PIPE AND EXISTING PIPE SHALL BE ENCASED WITH CONCRETE ENCASEMENT A MINIMUM DISTANCE OF 2' ON EACH SIDE OF THE JOINT. THIS WORK WILL NOT BE PAID FOR DIRECTLY AND THE COST FOR THIS WORK SHALL BE INCLUDED IN THE PRICE B/L FOR THE OTHER ITEMS OF WORK.



RECONSTRUCTION OF A PORTION OF
DISTRICT G, S. S. NO. 20
IN LINCOLN ST. FROM HYDRAULIC AVE. TO ELLIS AVE.
CITY OF WICHITA, KANSAS
R. W. LINN — CITY ENGINEER
DATE: PROJECT NO. DBKM575063

Plan Scale 1" = 20'
Profile Scale 1" = 20' Horiz.
1" = 5' Vert.





RECONSTRUCTION OF A PORTION OF
 DISTRICT-G, S. S. NO. 20
 IN LINCOLN ST. FROM HYDRAULIC AVE TO ELLIS AVE.
 PROJECT NO. DBKM575063

