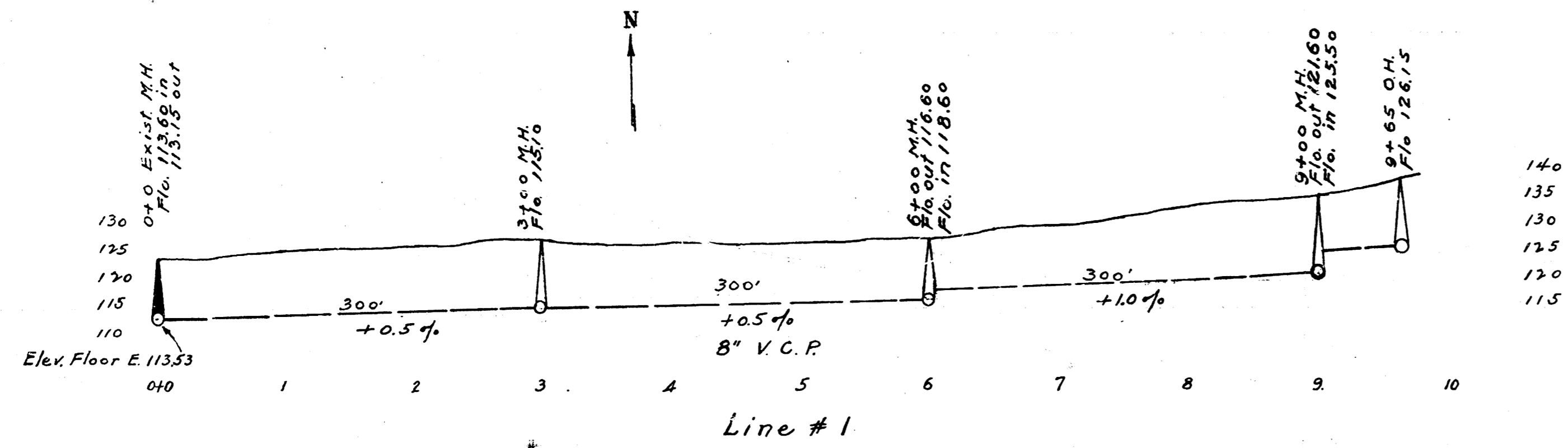
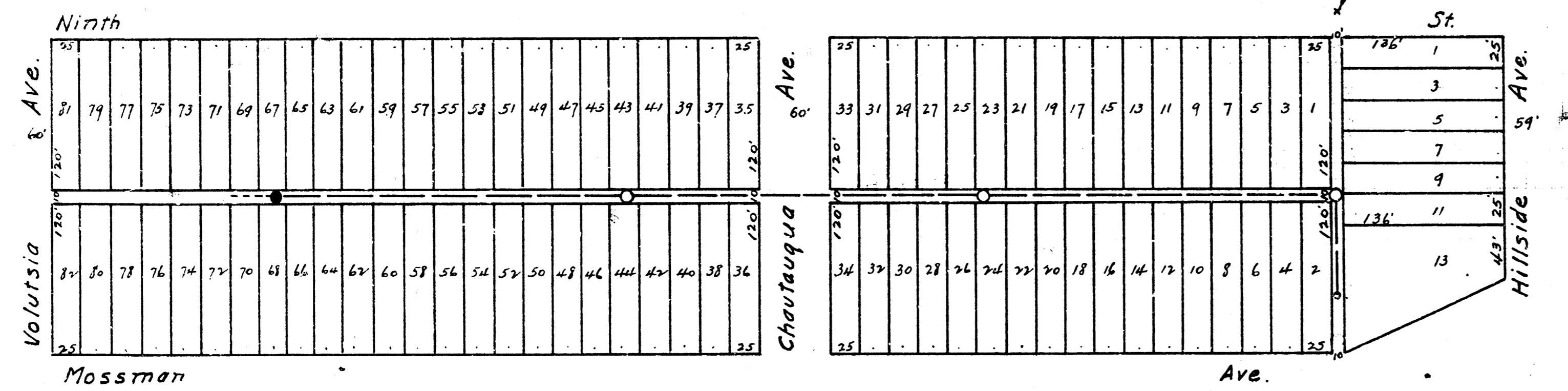
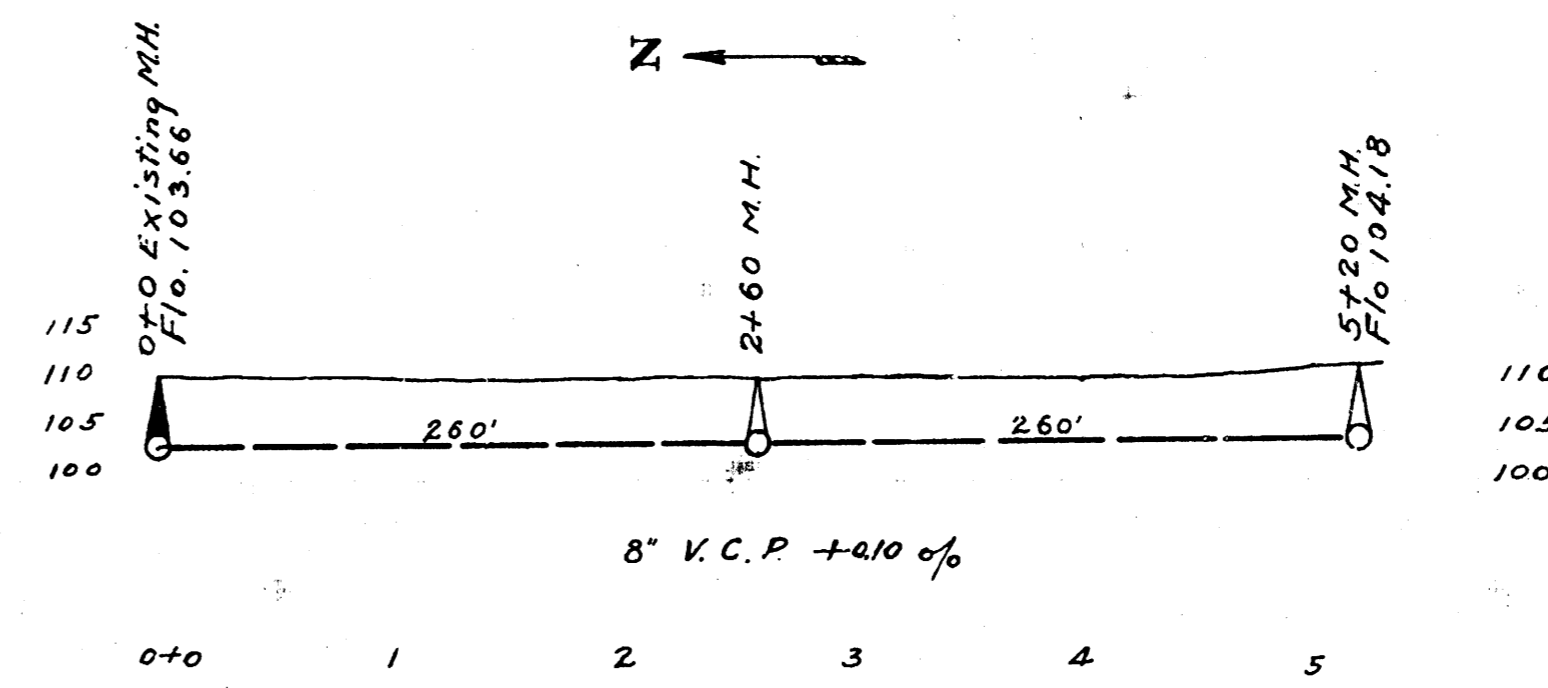
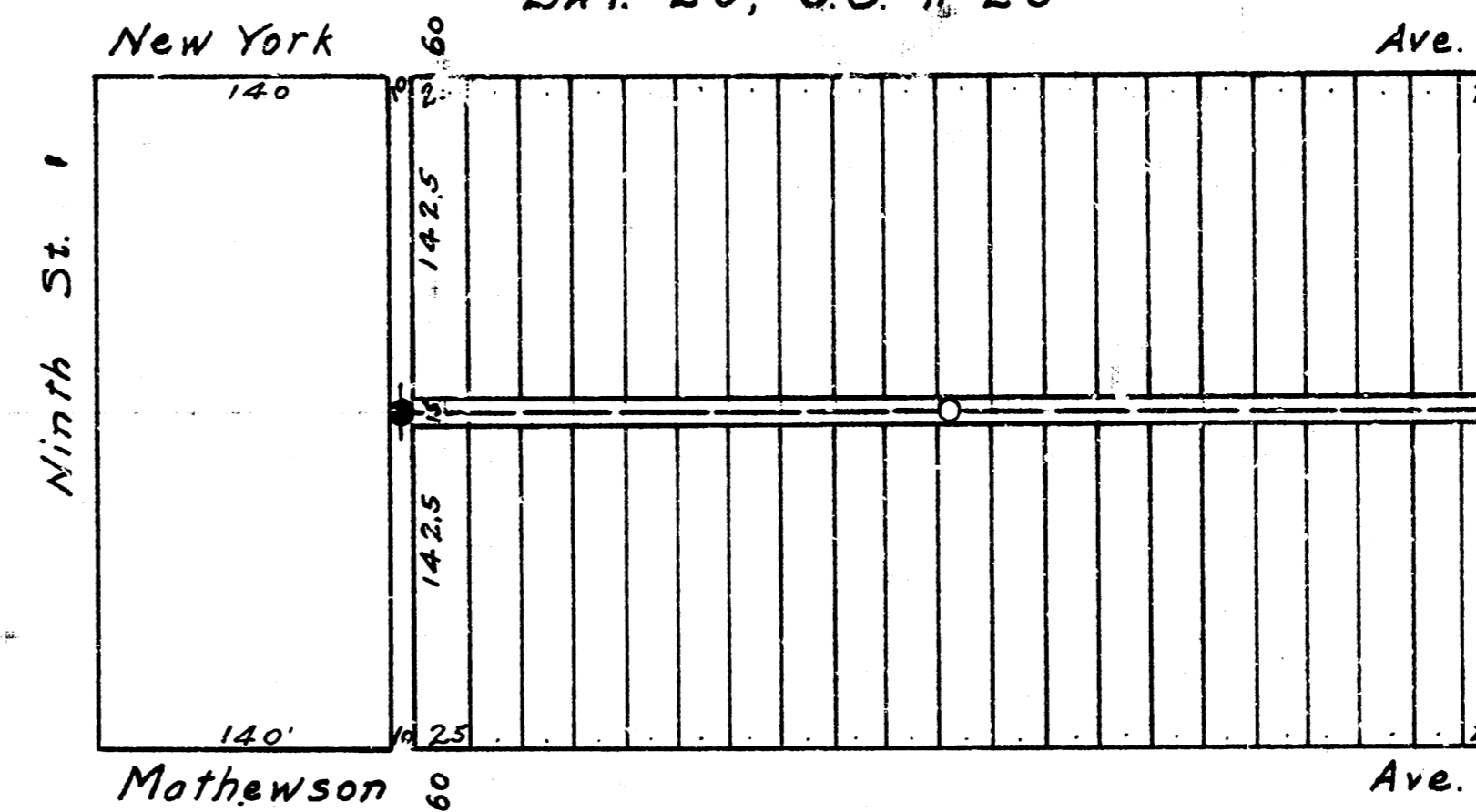


LAT. U, DIST. E, SS #12.



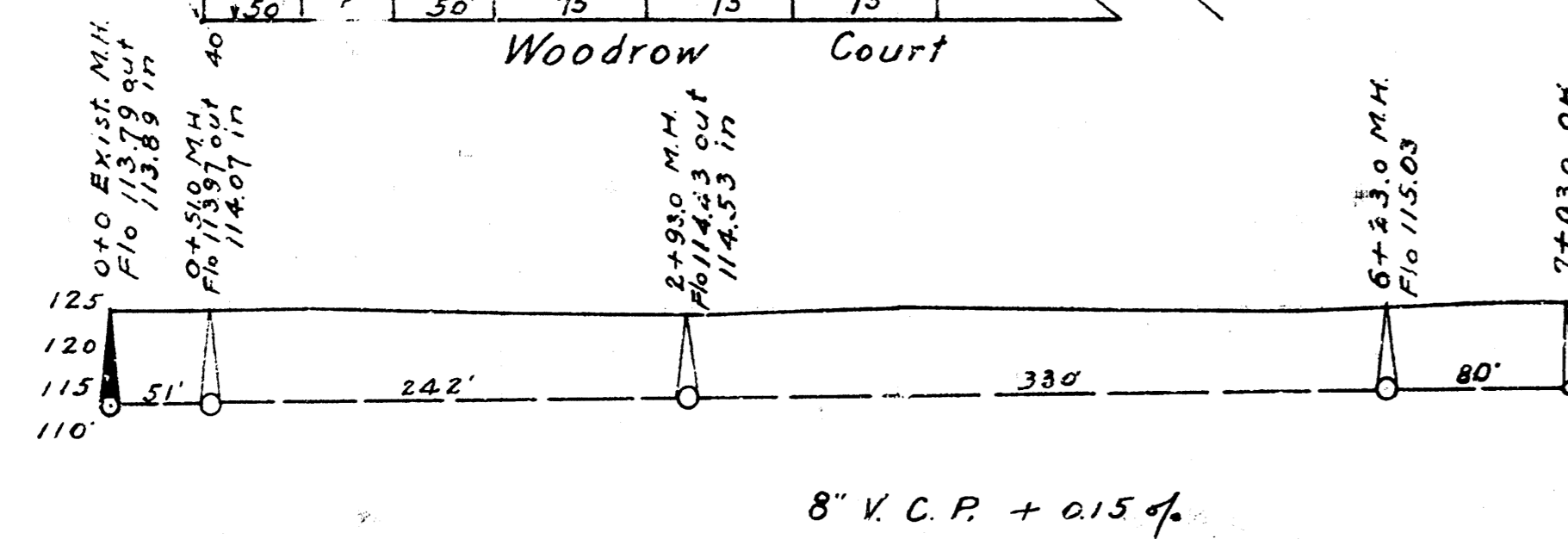
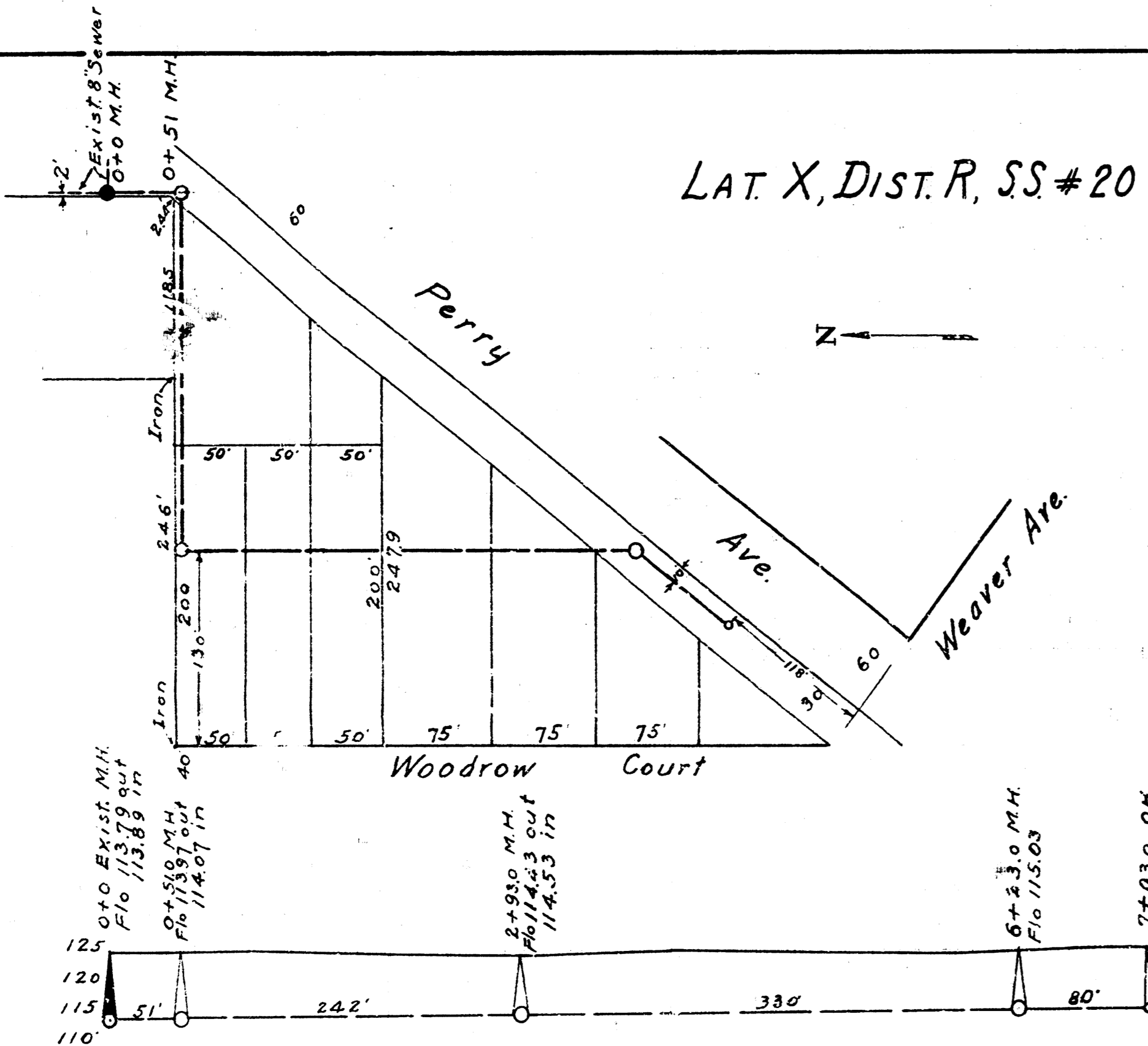
B.M. 122.96 Top of thimble & 9th & SW entrance to Cemetery.
 B.M. 136.60 N.W. Cor. Wk. N.S. Ho. # 3024 Mossman.

LAT. 20, SS # 20



B.M. 112.31 3"m Buckridge, on curb W.S. Alley R.
 bet. New York & Mathawson, N.S. 9th St.

LAT. X, DIST. R, SS # 20



B.M. 123.27 S. cb. 14th, E.L. Perry
 1 2 3 4 5 6 7

ENGINEERING DEPARTMENT
 CITY OF WICHITA, KANSAS.
 L.K. WHITE, CITY ENGINEER.
 FEB. 1945. C.H. MILLS.