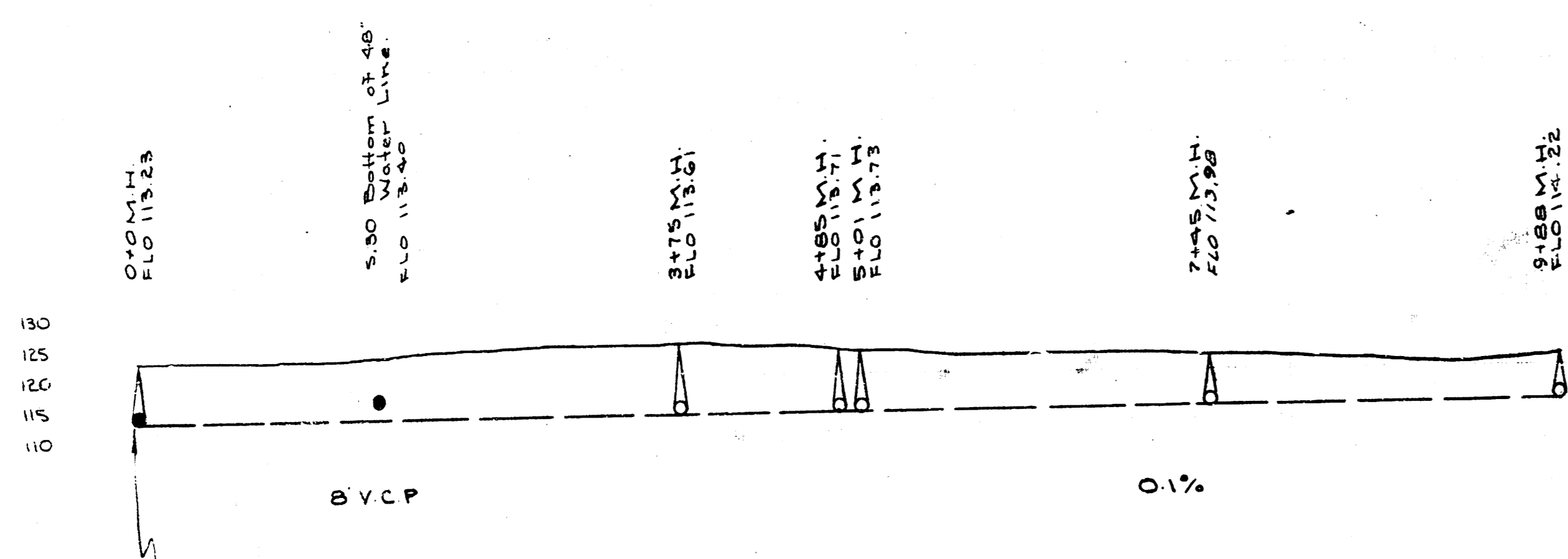
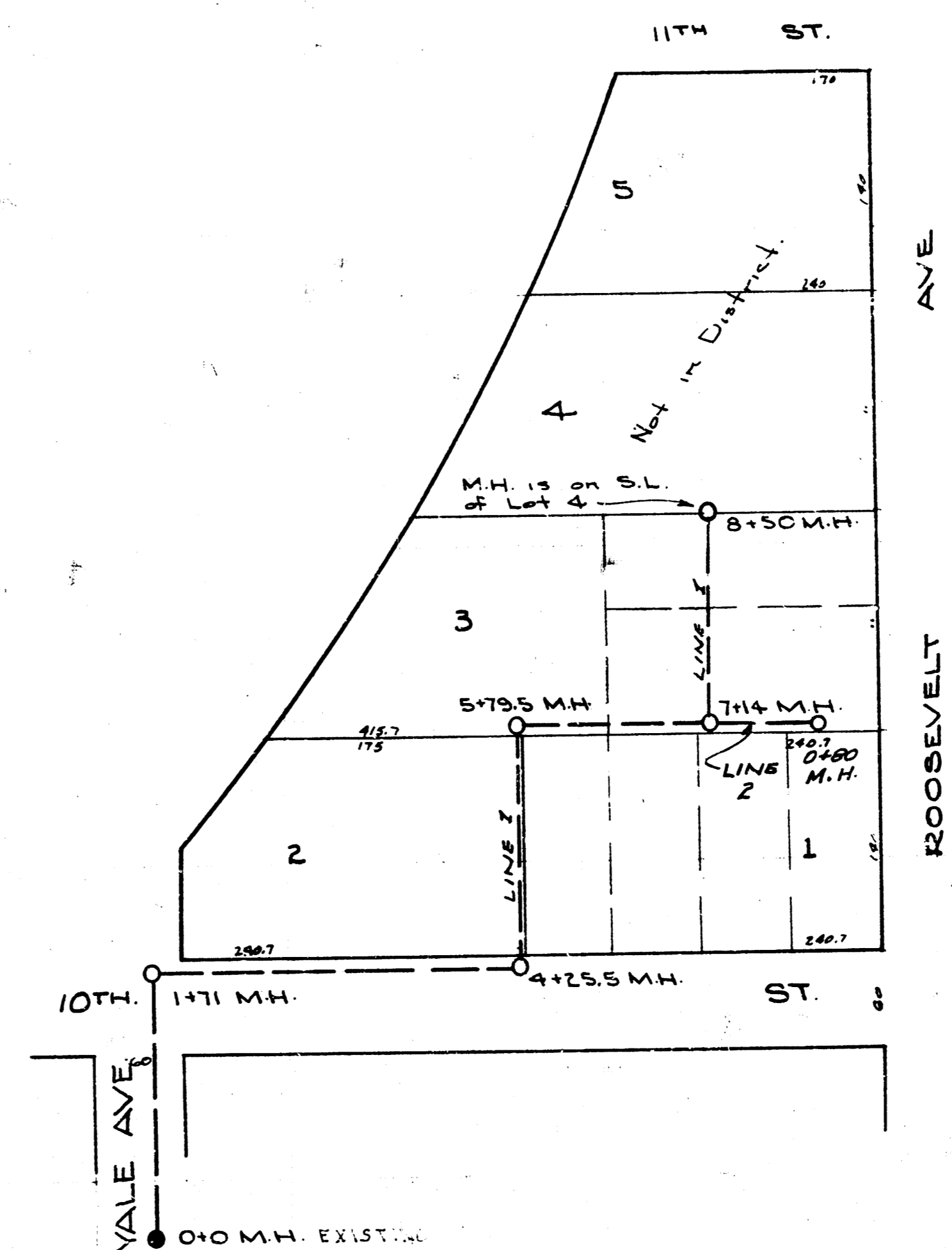


LAT. 1, DIST. R, S.S.#20

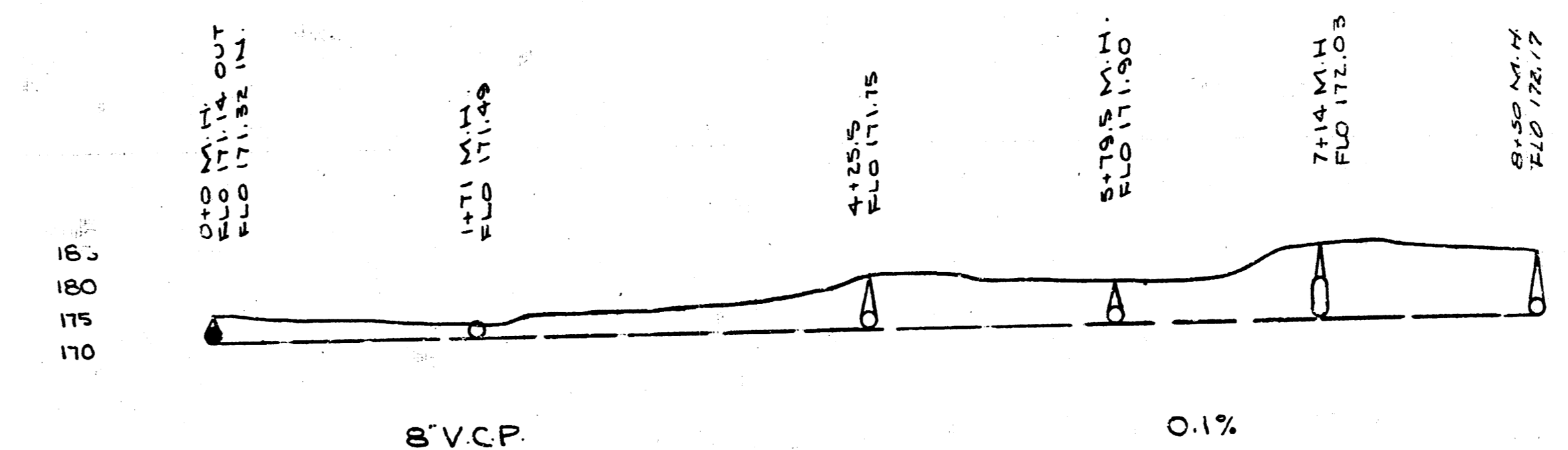


Note: Cut out bottom of 0+0 M.H. to permit IN Fio line to be same as OUT Fio line at 113.23 elev.

B.M. 125.75 Step Bench Light Pole S.E. Cor. 17th & Porter



LAT. 10, DIST. D, S.S.#12.



B.M. 174.55 Stepbench Cor Post SW Yale & 10th

0+0 M.H. (Existing)
Elev. 172.23 OUT
Elev. 172.00 IN

3+25.5 M.H.
Elev. 171.75

B.V.C.P.
0.1%
LINE 2

DEPARTMENT of SERVICE
CITY of WICHITA, KANSAS
ENGINEERING DIVISION
L.K. WHITE - CITY ENGINEER
SANITARY SEWER
Scale: 1" = 80'
February 1947