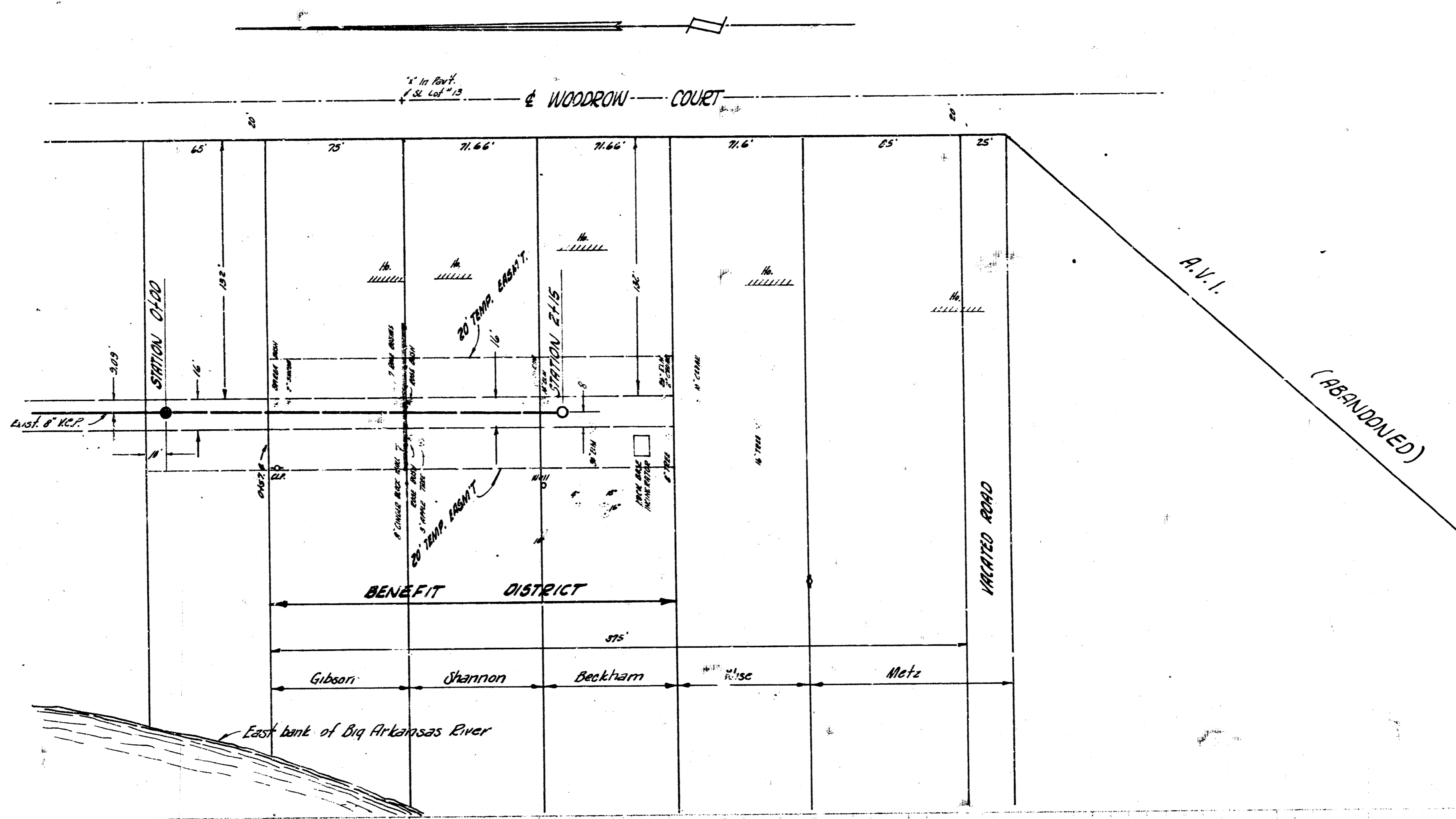
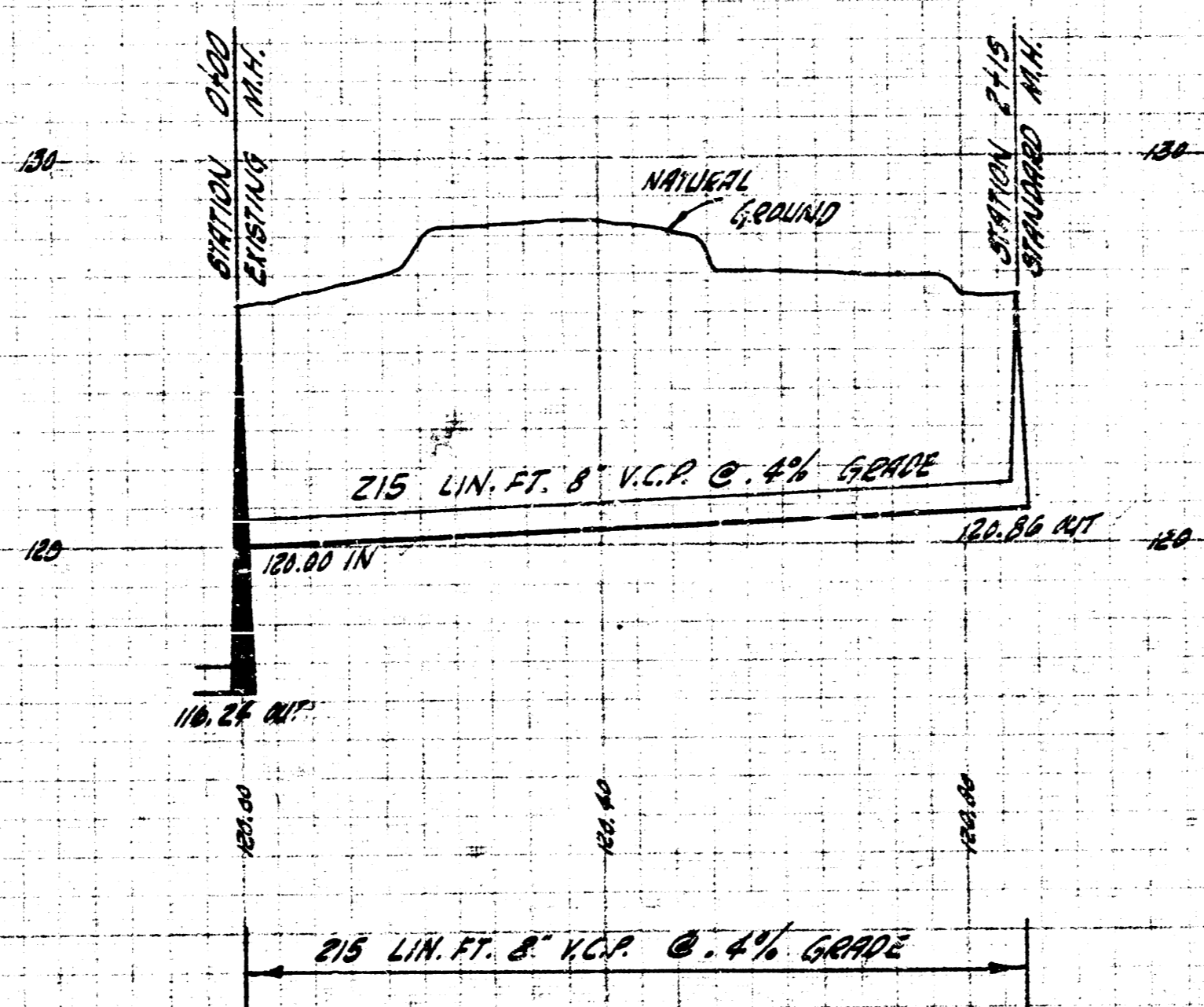


CHECKED BY: B. E. SMITH
DRAWN BY: B. E. SMITH
PROJ. NO. C-27-29



B.M. 126.46 N. RIM MANHOLE STATION 0+00



LAT. 7 SUBMAIN 2 SAN. SEWER 20
CITY OF WICHITA, KANSAS
B.E. SMITH CITY ENGINEER
PROJ. NO. C-27-29 - DATE - OCT. 1933