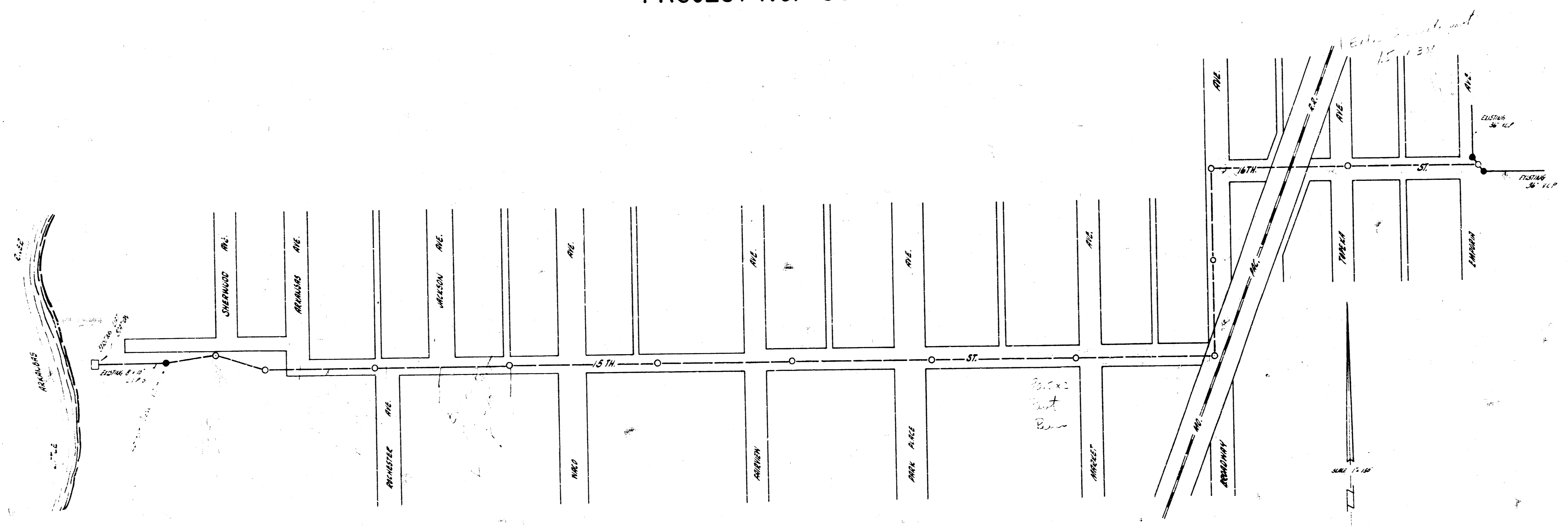


ADDITION TO SUBMAIN R SAN. SEWER 20
CITY OF WICHITA, KANSAS
B.E. SMITH CITY ENGINEER
PROJECT NO. C21-69

ADDITION TO SUBMAIN R SAN. SEWER 20
CITY OF WICHITA, KANSAS
B.E. SMITH CITY ENGINEER
PROJECT NO. C21-69



B.E. Smith
City Engineer

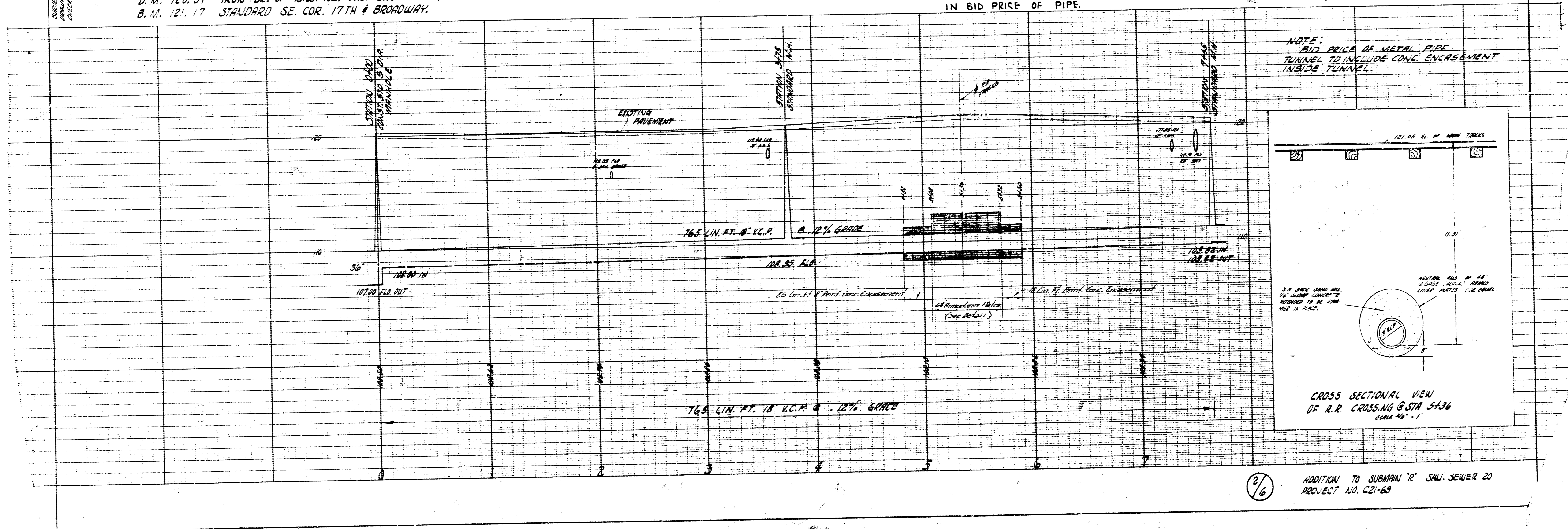
SURVEY BY JAMES FINNEY 8/24/59
 CHECKED BY T. P. GIBSON
 DRAWN BY J. J. GIBSON

B.M. 120.97 IRON BK. OF WKS. NE. COR. BROADWAY & 16TH
 B.M. 121.17 STANDARD SE. COR. 17TH & BROADWAY

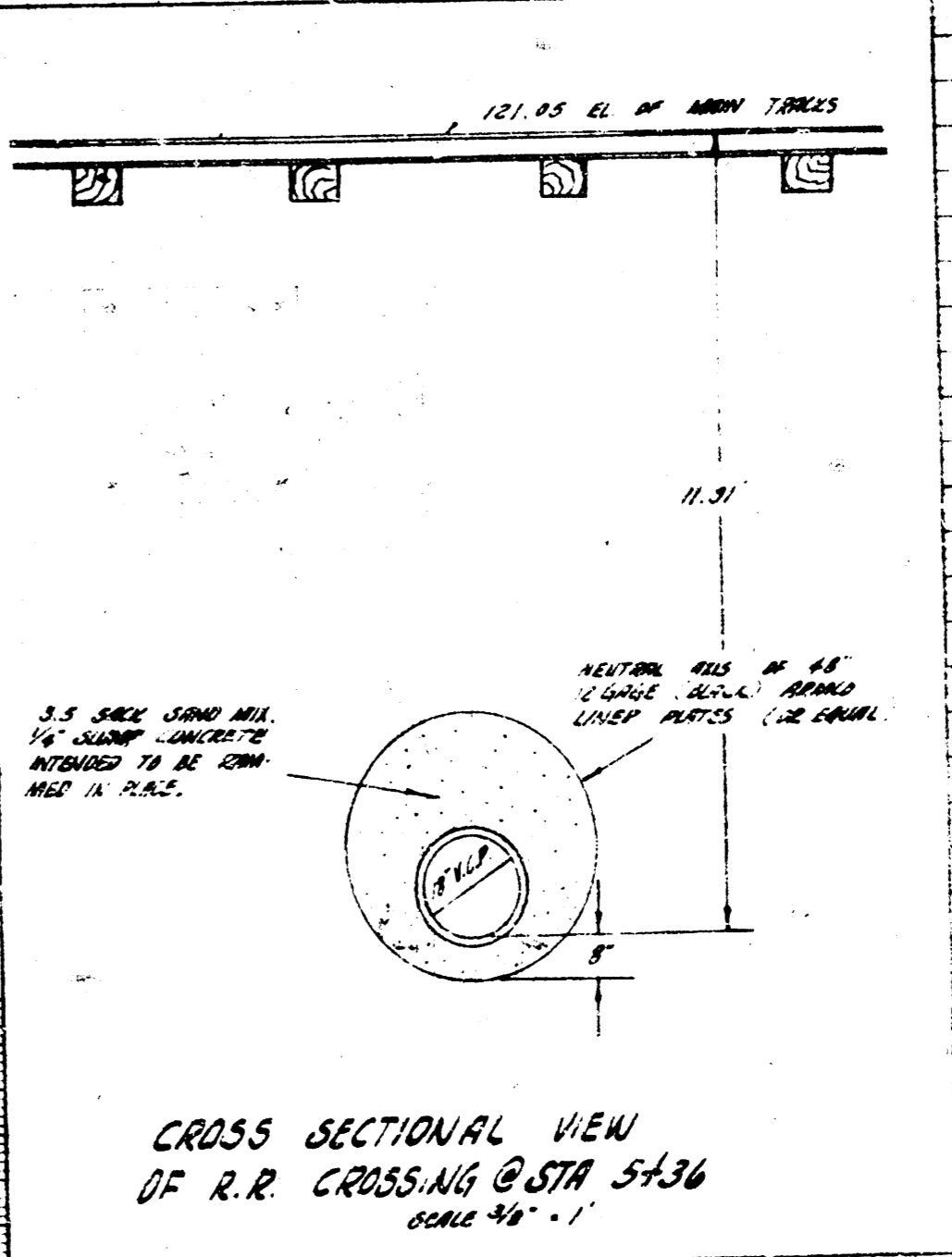
NOTE: SANDFILL ENTIRE PROJECT, AND
 REPLACE PAVEMENT TO CITY SPECS.

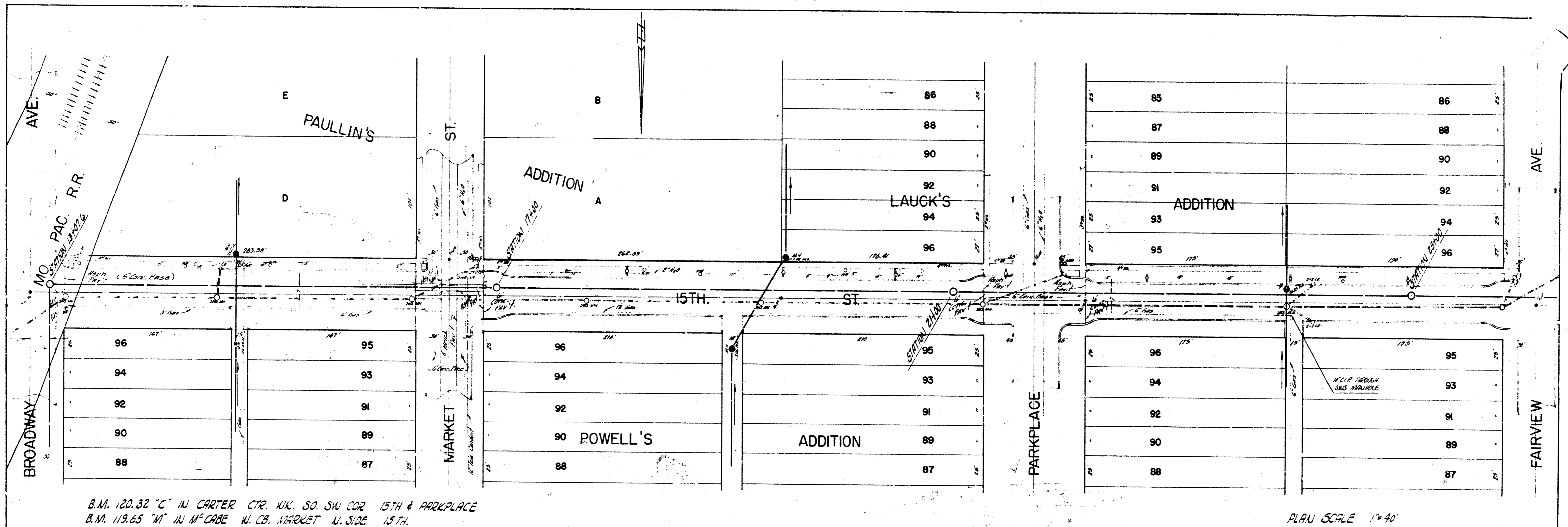
NOTE: COST OF REMOVAL & REPLACEMENT
 OF PAVEMENT TO BE INCLUDED
 IN BID PRICE OF PIPE.

PLAN SCALE 1" = 40'
 PROFILE SCALE 1" = 40' HOR, 1" = 4' VERTICAL

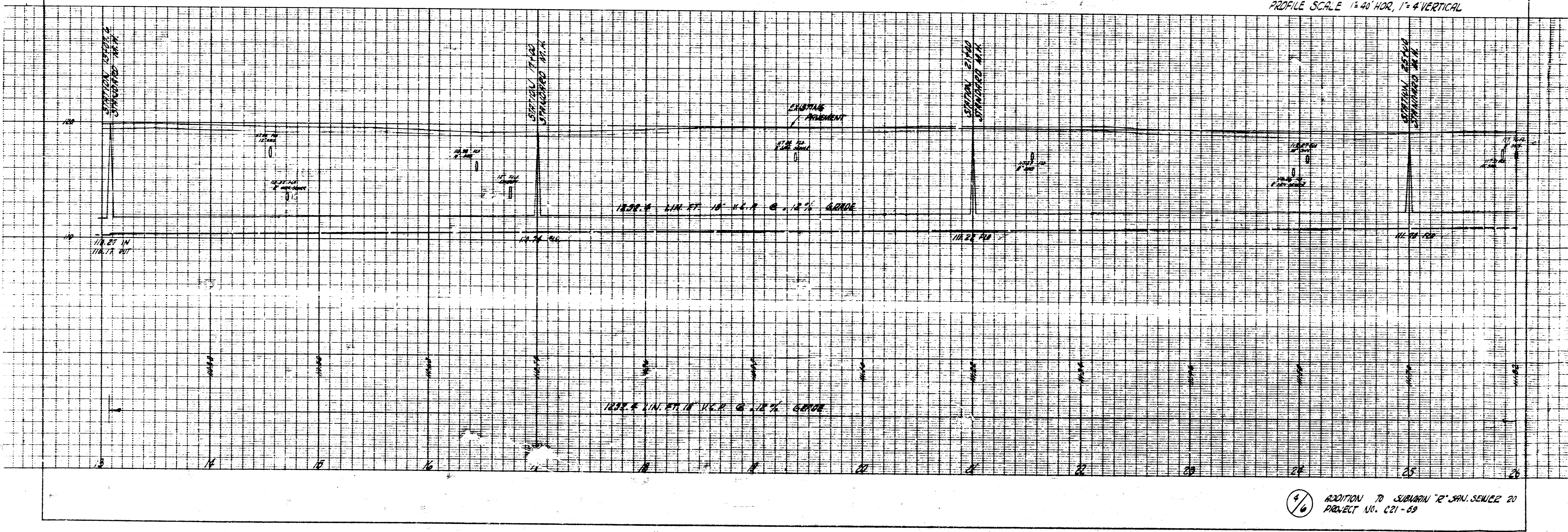


NOTE: BID PRICE OF METAL PIPE
 TUNNEL TO INCLUDE CONC. ENCASUREMENT
 INSIDE TUNNEL.

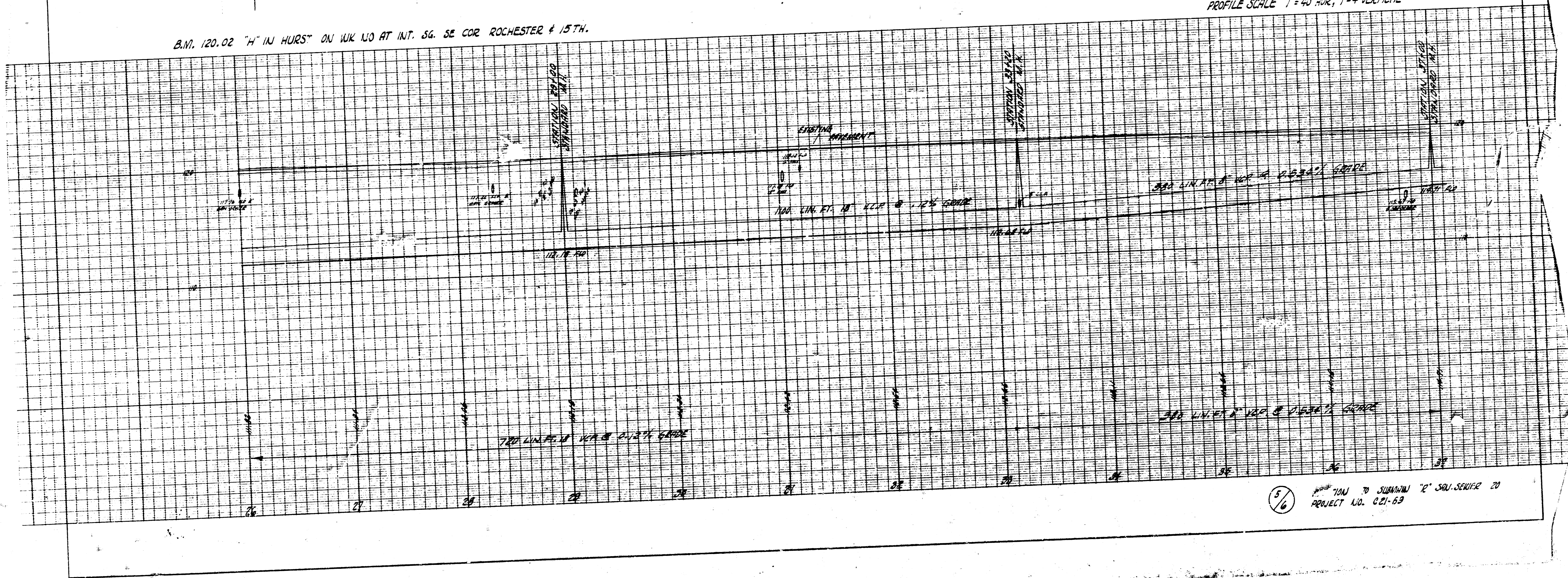
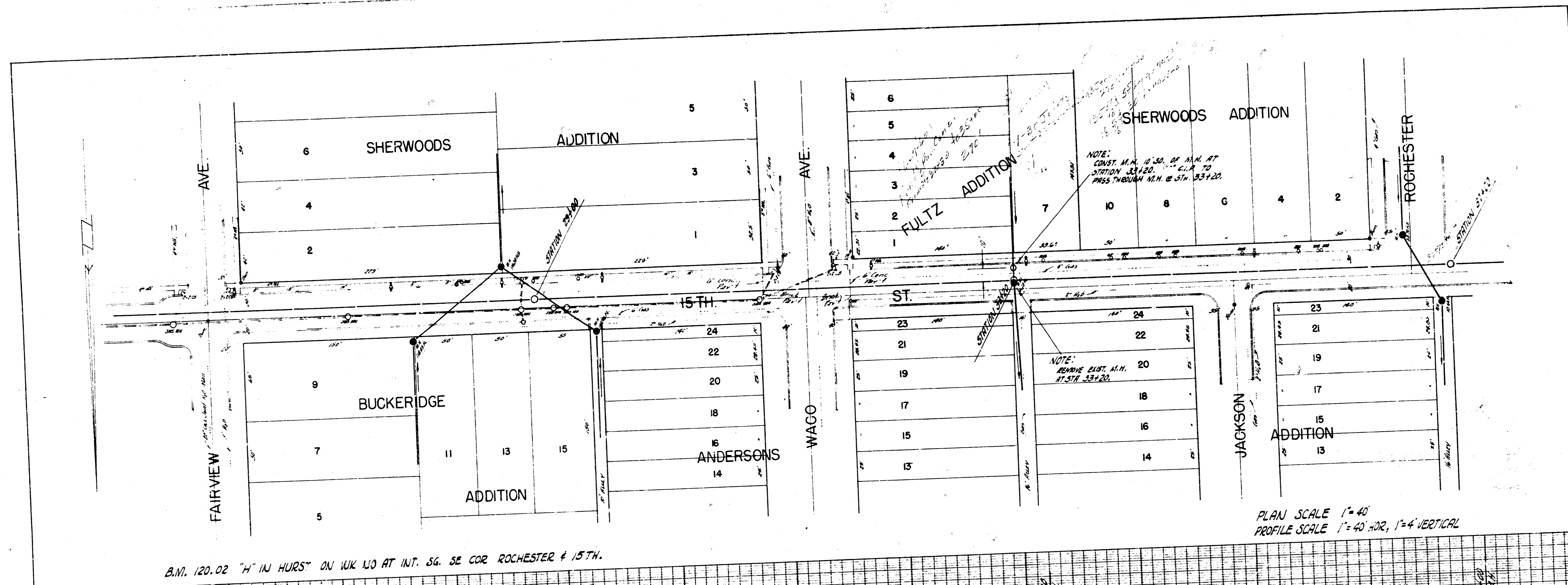


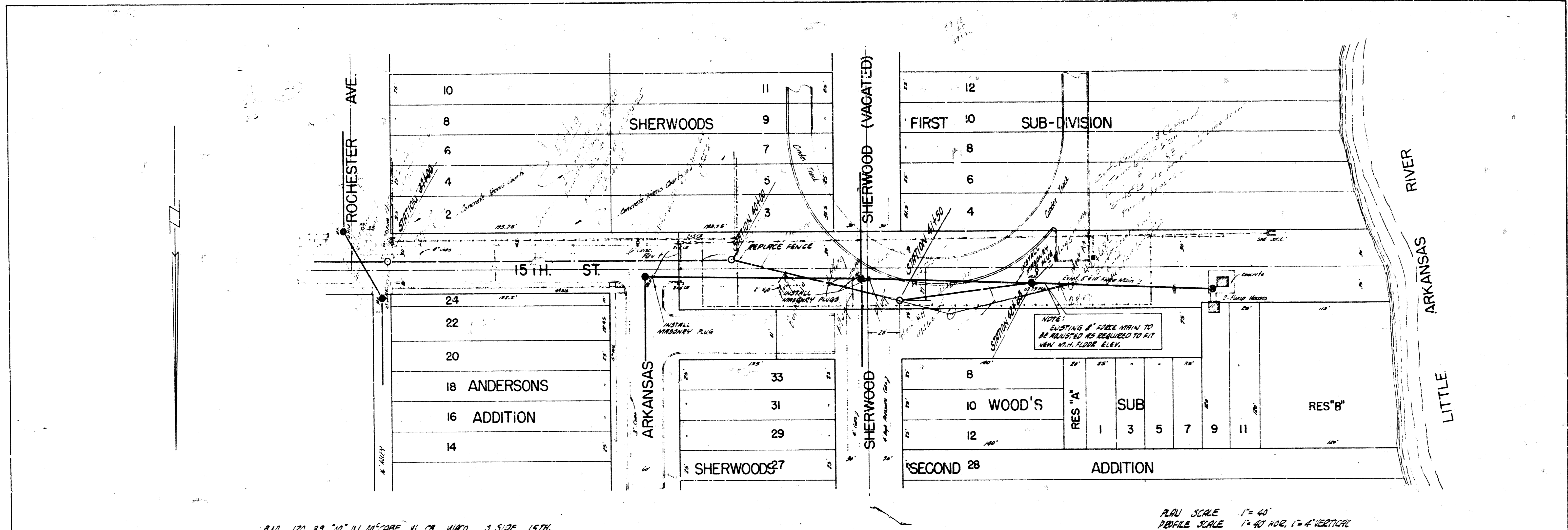


PLAN SCALE 1"=40'
 PROFILE SCALE 1"=40' HOR, 1"=4' VERTICAL



4/6 ADDITION TO SUBMITTAL 72' SAN. SEWER 20' PROJECT NO. C21-69





B.M. 120.39 "11" IN W.C. CABE AL. ON W. CO. S. SIDE 15TH.

PLAN SCALE 1" = 40'
 PROFILE SCALE 1" = 40' HOR, 1" = 4' VERTICAL



6/6 ADDITION TO SUBMITTAL # 2, SER. SERIES 20
 PROJECT NO. CEI-69