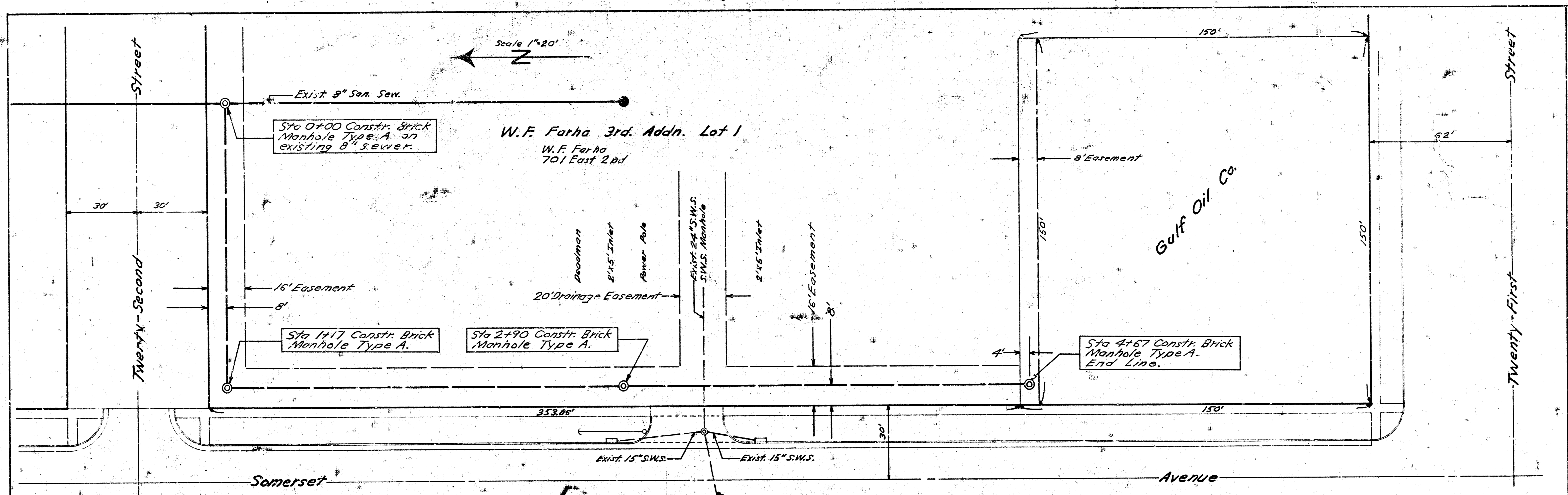
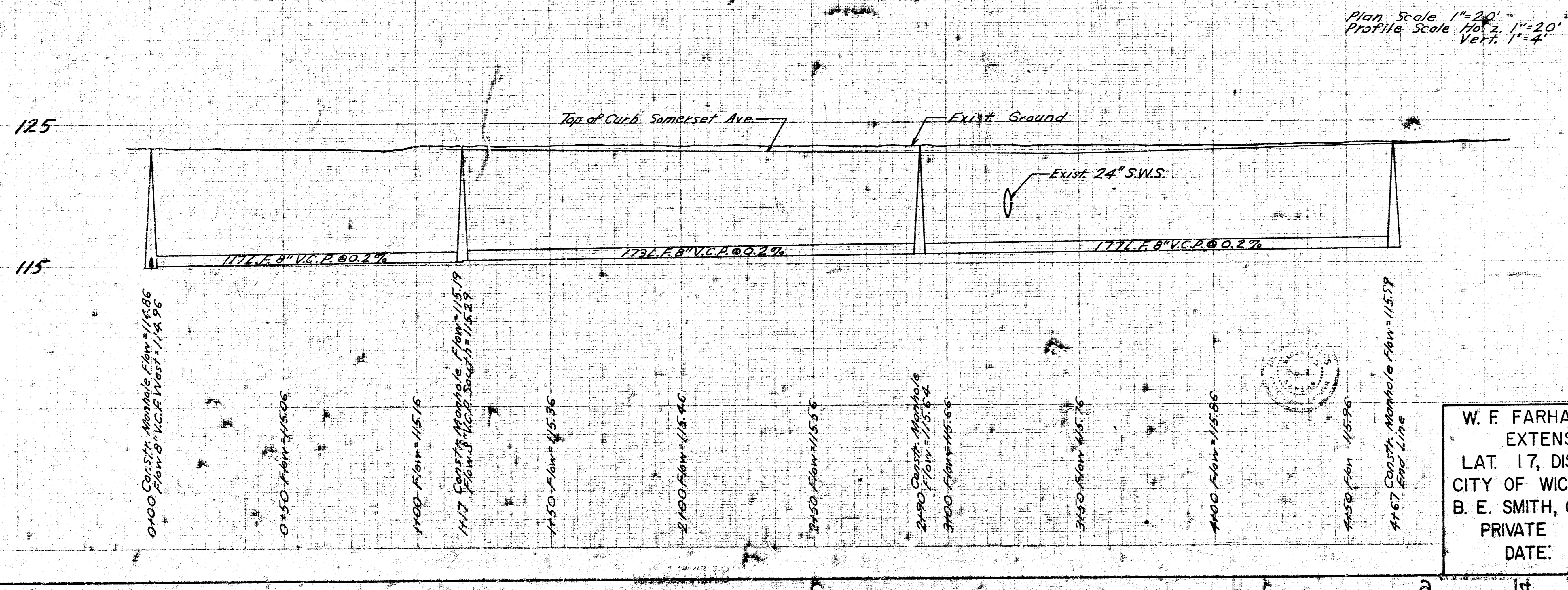


235-Y
Young
Schneider



B.M. 124.32 "4" Cut-top curb at West end radius on N.W. Cor. Somerset and 21st Street

W.F. FARHA 3RD ADDN.
This project will be constructed under the supervision of the CITY ENGINEER in accordance with the SPECIFICATIONS of the CITY OF WICHITA. The CONTRACTOR will reimburse the City of Wichita for all cost of Engineering, Plans, and Inspection.



Plan Scale 1"=20'
Profile Scale Vert. 1"=4'

W. F. FARHA 3rd ADDN.
EXTENSION OF
LAT. 17, DIST. T, S.S. 20
CITY OF WICHITA, KANSAS
B. E. SMITH, CITY ENGINEER
PRIVATE CONTRACT
DATE: