

B. M. 130.60 NW cor. conc. base Life 1816 SE 29th and Arkansas.

Survey by City of Wichita Checked by

130

120

Flow Out=117.90
Flow In=118.83

Flow=119.83

Flow Out=120.18
Flow In=120.28

Flow=120.03

Flow Out=120.19
Flow In=120.28

Flow=120.33

Flow Out=120.47
Flow In=120.57

Flow=120.63

Flow=120.89

Flow=121.04

Flow=121.23

Flow=121.43

Flow=121.57

Flow=121.63

Flow=121.83

Flow=122.03

Flow=122.09

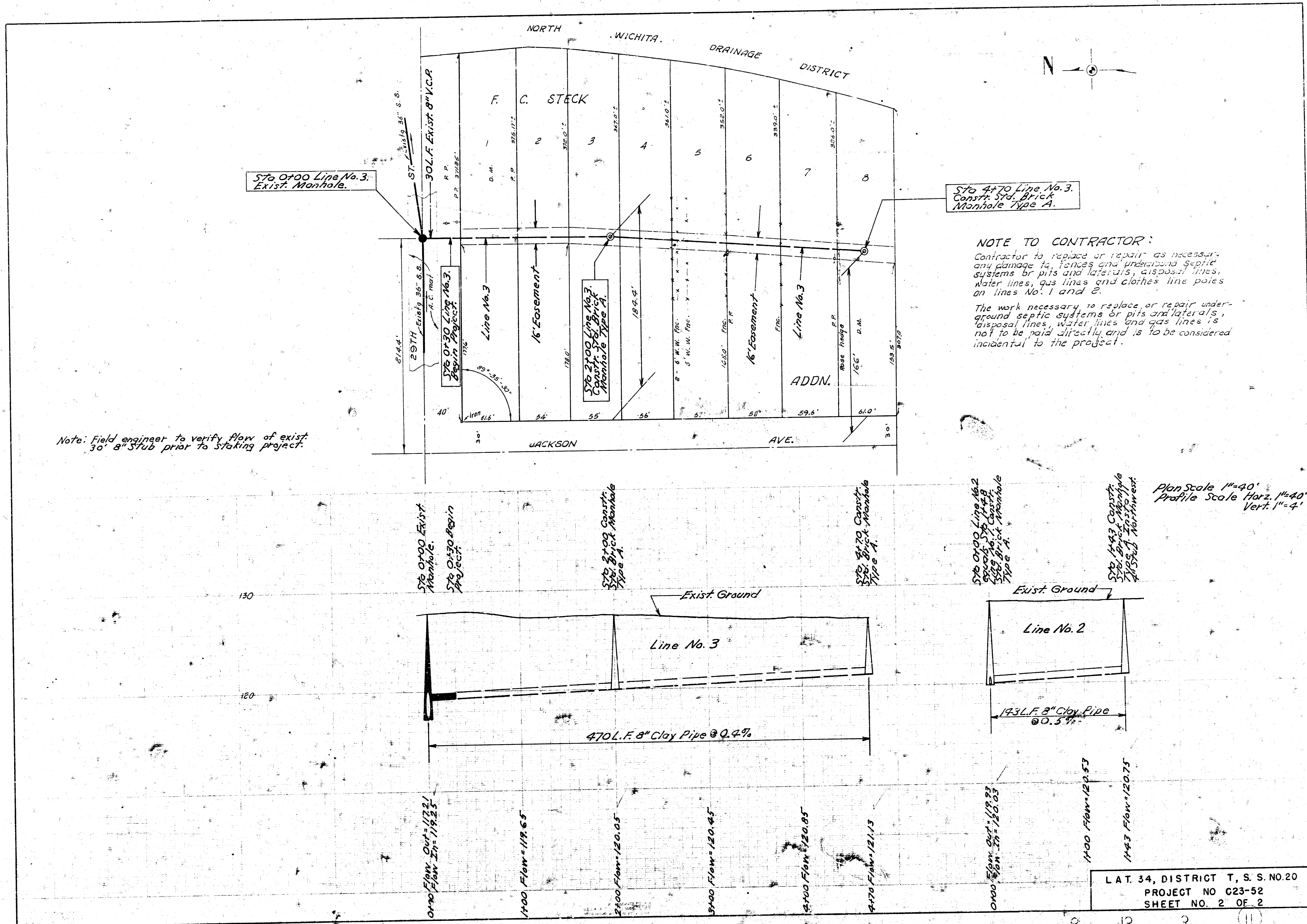
AT. 34, DISTRICT T, S. S. NO. 20
 CITY OF WICHITA, KANSAS
 B. E. SMITH CITY ENGINEER
 Sept 1969 PROJECT NO G23-52
 SHEET NO. 1 OF 2

Note: Any additional access roads necessary to construct sewer line to be acquired by the contractor.

Note: Replace asphalt surface on 29th Street with 6\"/>

Note: See sheet No. 2 for profile of Line No. 2.

Plan Scale 1" = 40'
Profile Scale 1" = 4' Vert



Sta. 0+00 Line No. 3. Exist. Manhole.

Sta. 4+70 Line No. 3. Const. 30" Brick Manhole Type A.

NOTE TO CONTRACTOR:
 Contractor to replace or repair as necessary any damage to fences and underground septic systems or pits and laterals, disposal lines, water lines, gas lines and clothes line poles on lines No. 1 and 2.
 The work necessary to replace or repair underground septic systems or pits and laterals, disposal lines, water lines and gas lines is not to be paid directly and is to be considered incidental to the project.

Note: Field engineer to verify flow of exist. 30" 8" stub prior to staking project.

Plan Scale 1"=40'
 Profile Scale Horiz. 1"=40'
 Vert. 1"=4'

L.A.T. 34, DISTRICT T, S.S. NO. 20
 PROJECT NO G23-52
 SHEET NO. 2 OF 2