

SANITARY SEWER NO. 20 LAT. 38, DISTRICT T RIVERMILL MEDICAL ADDITION PROJECT NO.

468-76-245-82025-000-000-001

CITY OF WICHITA, KANSAS
MICHAEL E. LINDEBAK, CITY ENGINEER
MAY, 1990

INDEX NO. 740449

GENERAL NOTES

1. THE CONTRACTOR SHALL BE RESPONSIBLE FOR PRESERVING PROPERTY IRONS. THE CONTRACTOR WILL BE REQUIRED TO RE-ESTABLISH ANY PROPERTY IRONS WHICH ARE DAMAGED OR DESTROYED BY HIS CONSTRUCTION OPERATIONS. SUCH IRONS SHALL BE RE-ESTABLISHED BY A LICENSED LAND SURVEYOR IN ACCORDANCE WITH STATE LAWS.
2. EXISTING UTILITIES AND THEIR LOCATIONS, AS SHOWN ON THE PLANS REPRESENT THE BEST INFORMATION OBTAINABLE FOR DESIGN. LOCATION INFORMATION HAS BEEN OBTAINED FROM THE VARIOUS UTILITY COMPANIES AND IS EITHER FROM COMPANY RECORD DRAWINGS OR COMPANY PROVIDED FIELD LOCATIONS. THE PLAN LOCATIONS SHOWN ARE NOT GUARANTEED. ADDITIONAL EXISTING UTILITIES MAY ALSO BE ENCOUNTERED.
3. CONTRACTOR WILL BE REQUIRED TO PROVIDE A MINIMUM ADVANCE NOTICE OF FORTY-EIGHT (48) HOURS TO UTILITY COMPANIES PRIOR TO STARTING ANY EXCAVATION AS FOLLOWS:

KANSAS ONE-CALL	1-800-344-7233
	OR 687-2470 (LOCAL WICHITA)

THE CONTRACTOR MUST NOTIFY THE FOLLOWING IN CASE OF AN EMERGENCY:

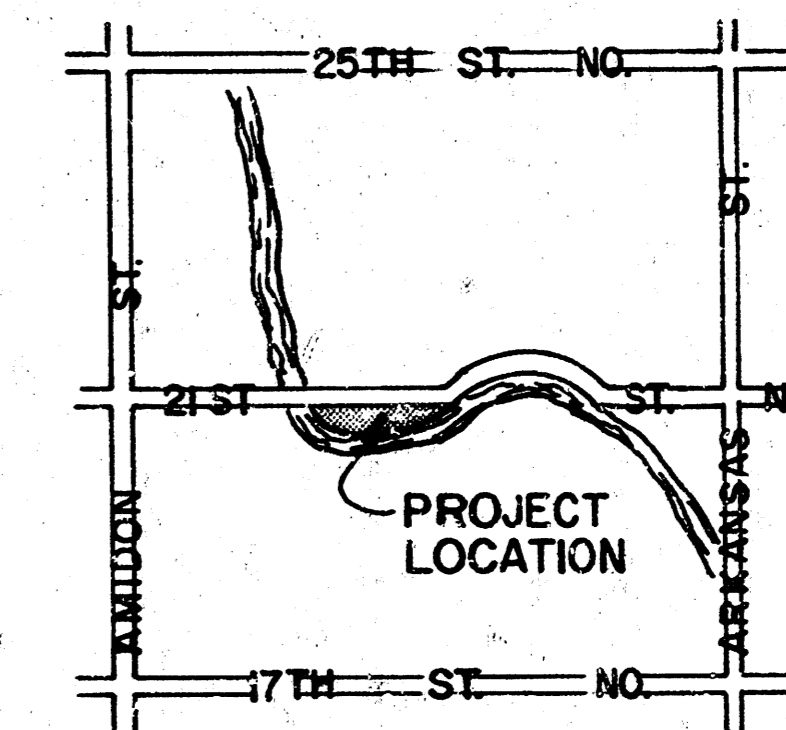
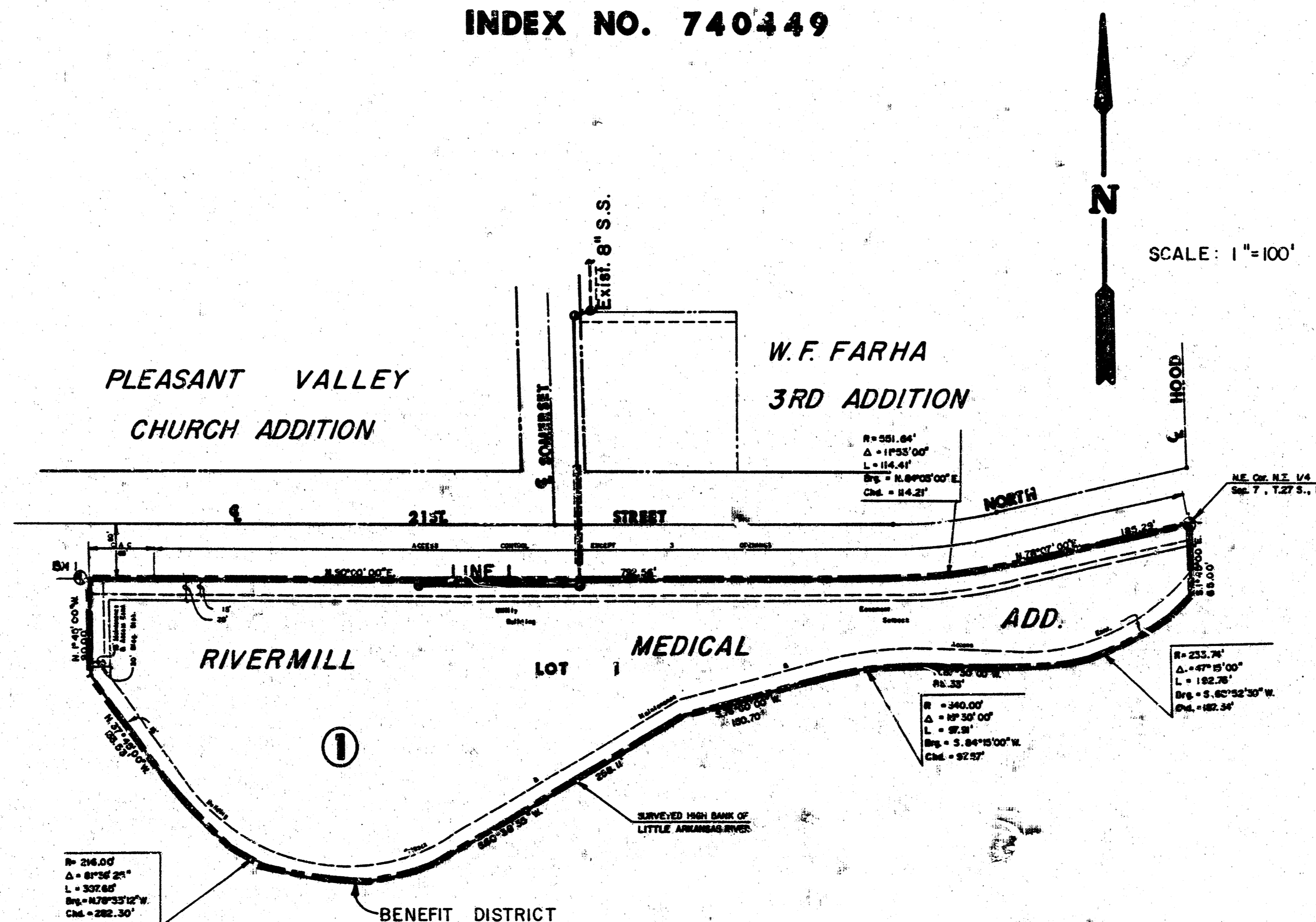
SOUTHWESTERN BELL TELEPHONE COMPANY	1-571-2115
CABLEVISION	262-4270 OR 263-2061
KPL GAS SERVICE COMPANY	263-7511
KANSAS GAS & ELECTRIC	264-1141
CITY OF WICHITA WATER DEPARTMENT	268-4908
CITY OF WICHITA SEWER MAINTENANCE	268-4071
ARMA GAS COMPANY	942-8350 OR 263-8161
4. RUBBLE FROM THE REMOVAL OF MISCELLANEOUS STRUCTURES AND EXCESS EXCAVATION WHICH IS TO BE WASTED SHALL BE DISPOSED OF ON SITES TO BE PROVIDED BY THE CONTRACTOR. THESE SITES SHALL BE APPROVED BY THE ENGINEER AS TO SUITABILITY, APPEARANCE AND SITE LOCATION. LOCATIONS THAT, IN THE OPINION OF THE ENGINEER, WILL LEAVE AN UNSIGHTLY APPEARANCE WILL NOT BE APPROVED.
5. COST OF EXCAVATION, HAULING, AND DUMPING OF EXCESS EXCAVATION SHALL BE SUBSIDIARY TO THE PROJECT.
6. REPLACEMENT OF SIGNS, SIDEWALK, PARKING LOT, DRIVEWAY, AND PLANTING, SEEDING, MULCHING, AND FERTILIZING SHALL BE PAID AS SITE PREPARATION AND RESTORATION. SEEDING, MULCHING AND FERTILIZING SHALL BE DONE IN PUBLIC RIGHT OF WAY WHERE DISTURBED BY CONSTRUCTION, AS PER CITY OF WICHITA AR - 78 ON FILE AT THE CITY ENGINEERS OFFICE.
7. ANY COST INVOLVED IN SECURING OF K.G.& E. POWER POLES SHALL BE SUBSIDIARY TO PROJECT.
8. CONTRACTOR SHALL COMPACT SOILS AT LOCATIONS WHERE PAVEMENT OR DRIVEWAYS ARE REMOVED AND AT LOCATIONS WHERE THERE IS PROPOSED FUTURE PAVEMENT OR DRIVEWAYS TO 95% PROCTOR DENSITY. COST SHALL BE PAID AS SITE PREPARATION AND RESTORATION.
9. TREES TO BE REMOVED ARE MARKED \otimes . ALL TREES WHICH IN THE OPINION OF THE FIELD ENGINEER CAN BE SAVED, SHALL BE SAVED.
10. COST OF BREAKING INTO THE EXISTING MANHOLE IS SUBSIDIARY TO PROJECT.
11. CONTRACTOR SHALL CONTACT THE OWNER OF THE SERVICE STATION, REZA EFTEKHAR, 838-6970, A MINIMUM OF 5 DAYS PRIOR TO CLOSING OF ACCESS DRIVE.

BENCH MARKS

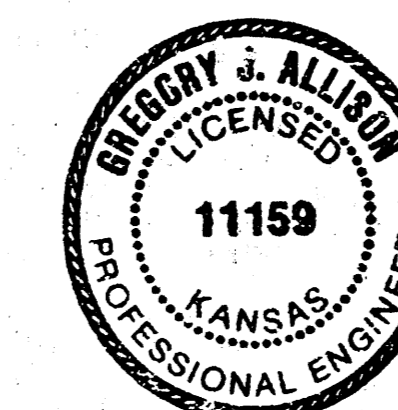
BM #1: CITY OF WICHITA DISC ON SOUTHEAST CORNER OF THE LITTLE ARKANSAS RIVER BRIDGE LOCATED ON 21ST ST NO. ELEV. = 126.31

INDEX TO DRAWINGS

SHEET NO.	DESCRIPTION
1	TITLE SHEET
2	PLAN & PROFILE - LINE 1
3	RIVERMILL MEDICAL ADD. FINAL PLAT



LOCATION MAP



AS BUILT
9-90
RDL

	RIVERMILL MEDICAL ADDITION SANITARY SEWER PLANS	Drawn by DPR Checked by Date MAY 1990 Job no.
	MID-KANSAS ENGINEERING CONSULTANTS PA 3500 NORTH ROCK ROAD BUILDING #800 WICHITA, KANSAS 67226	636-5566

FILMED FROM THE BEST
AVAILABLE COPY

