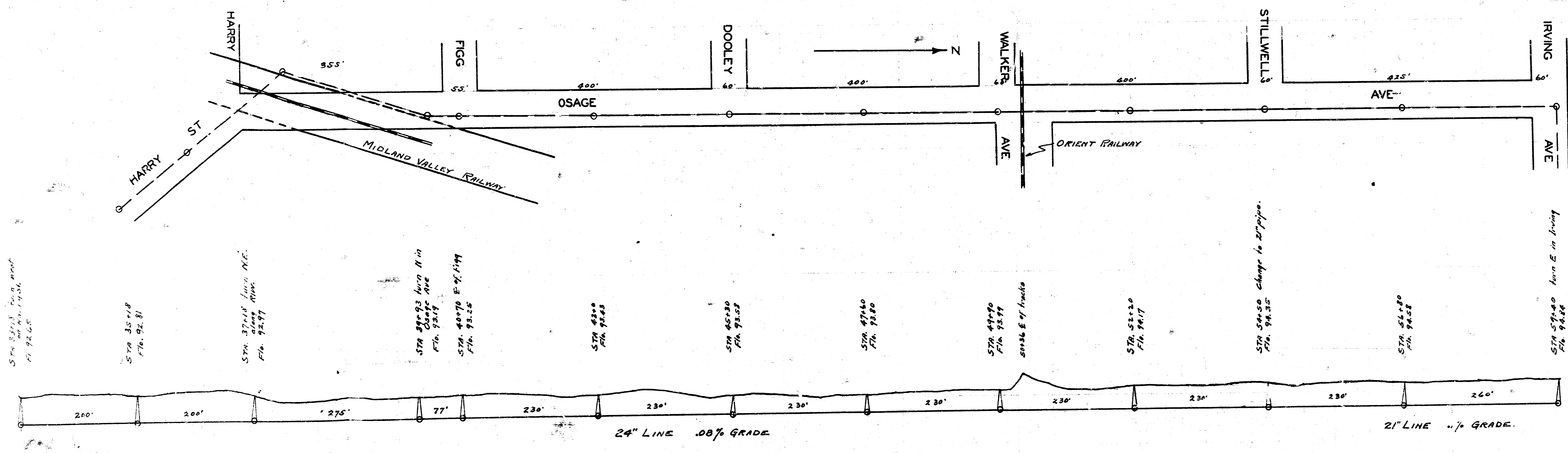


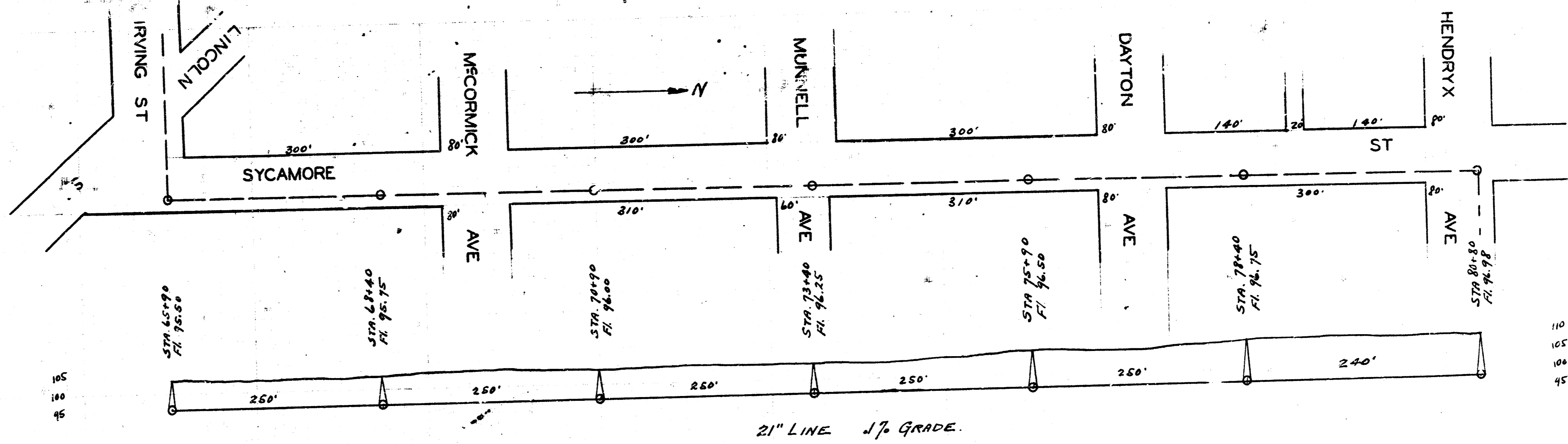
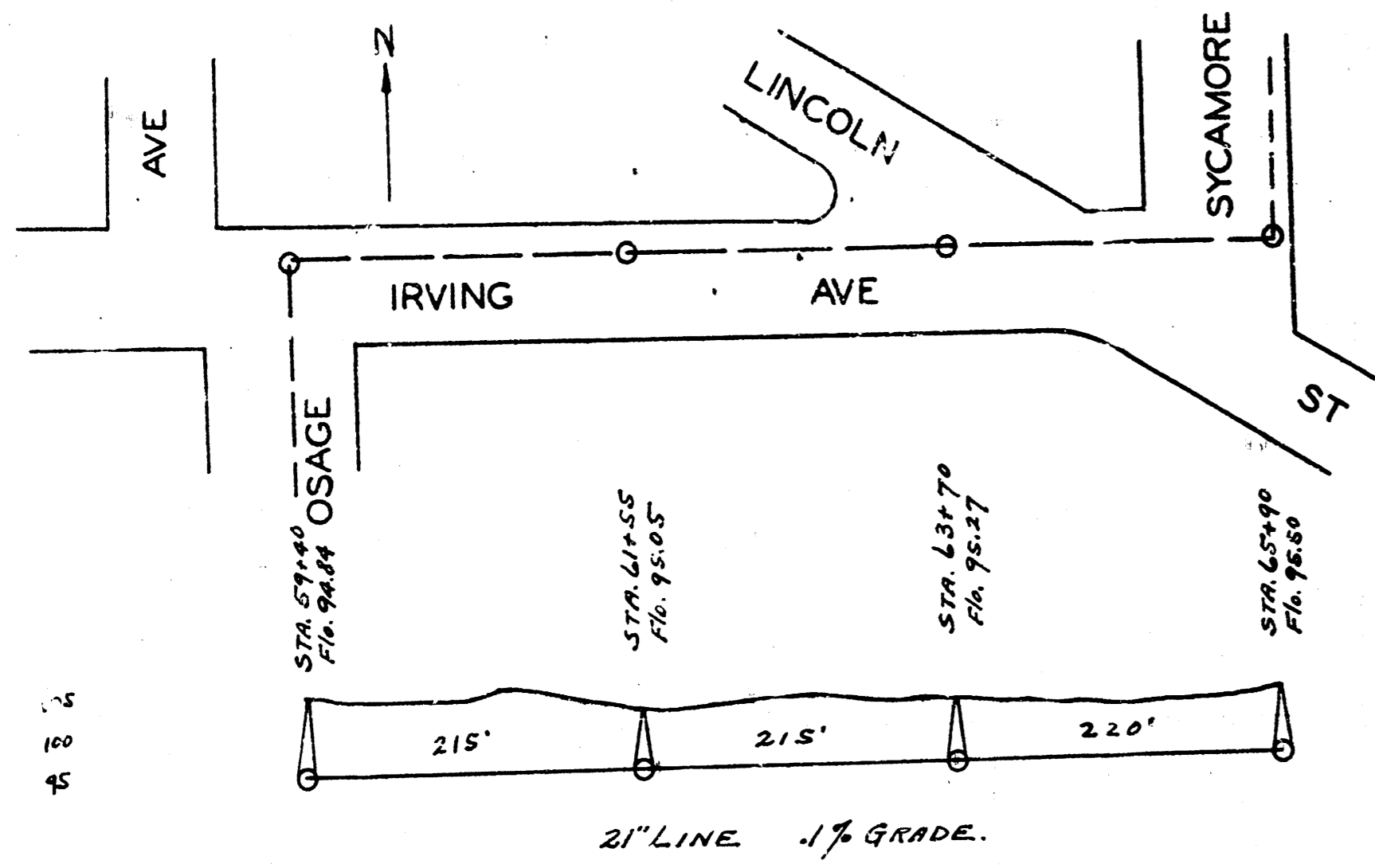
SAN. SEWER MAIN DIST. 21.

SHEET 1 3 SHEETS

B.M. 104.02 Lower U bolt on ground wire cover NW cor Walker + Osage
 B.M. 102.13 on R.W. 100' N.S. Harry + Gold. of Mid. R.W.
 B.M. 104.06 Std. S.E. Cor Harry + Gold.



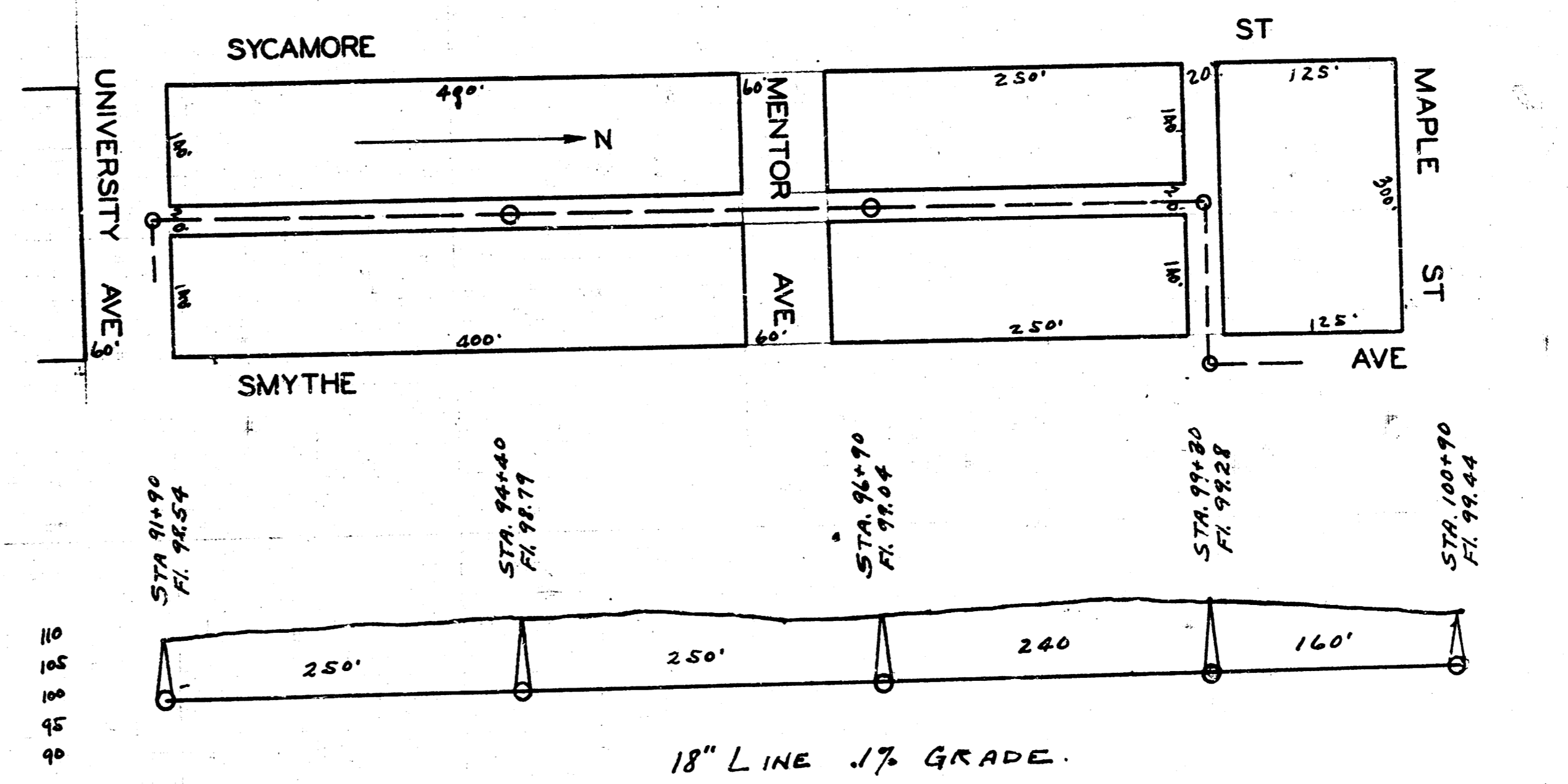
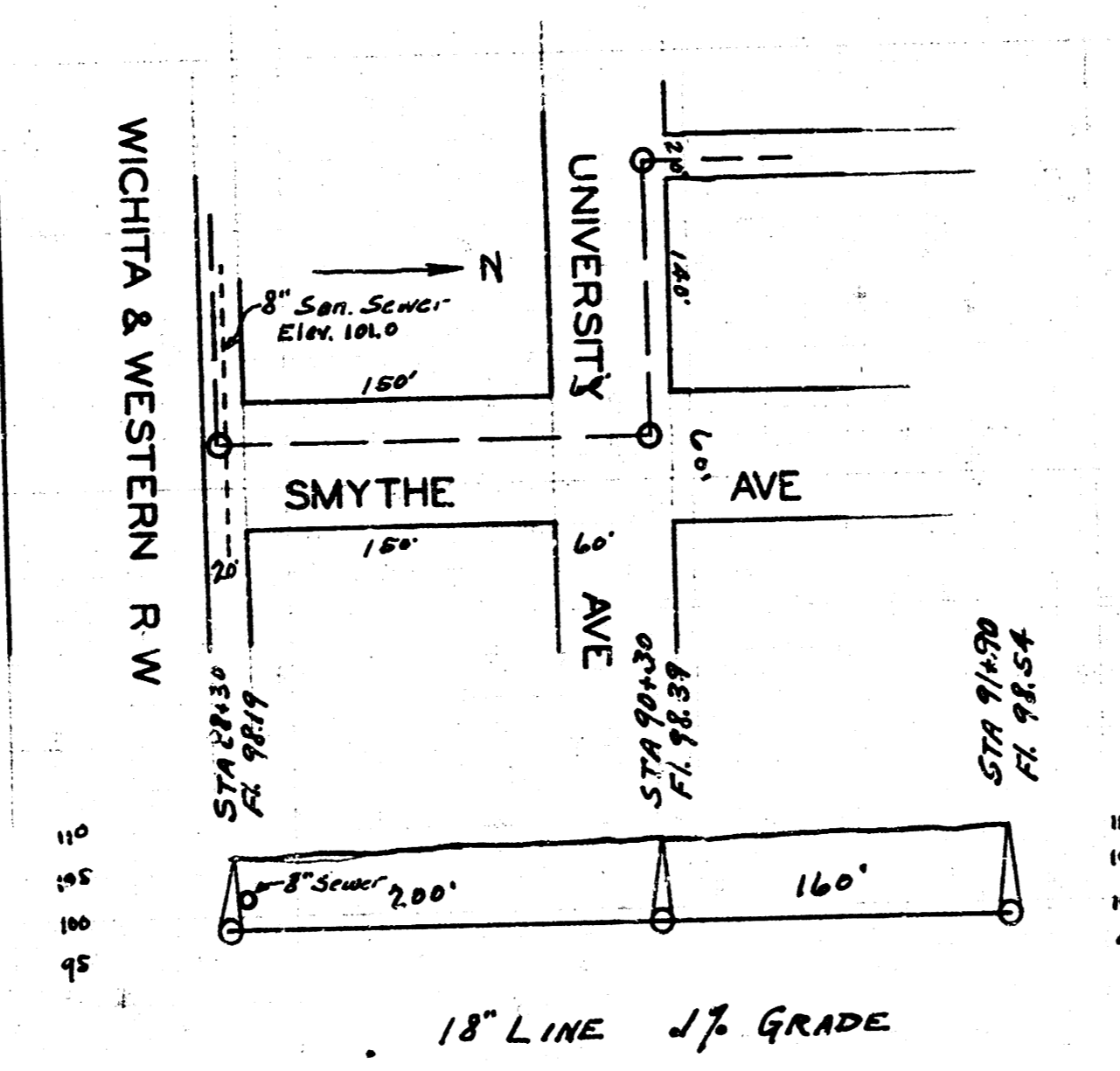
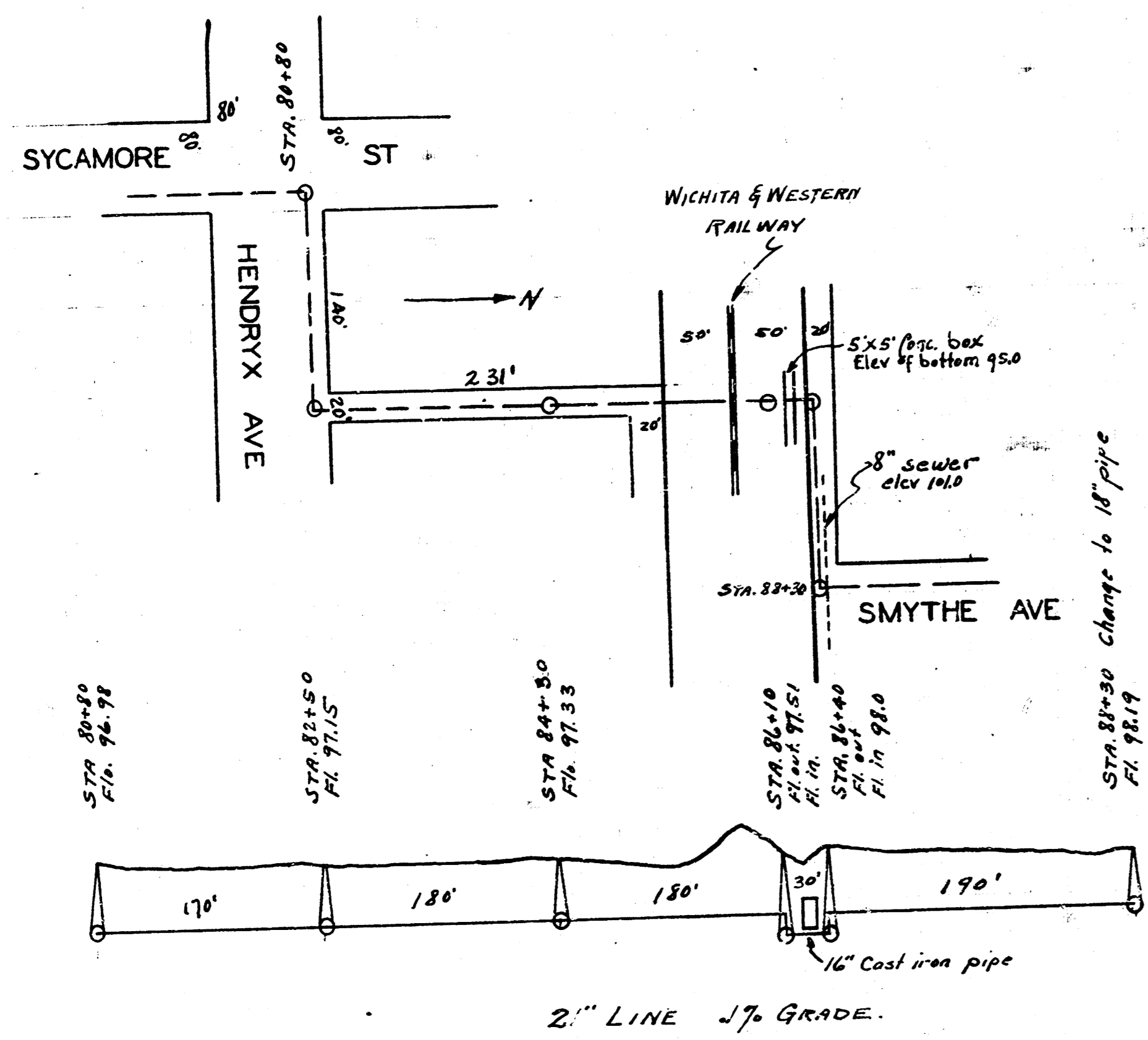
10
105
100
95
90

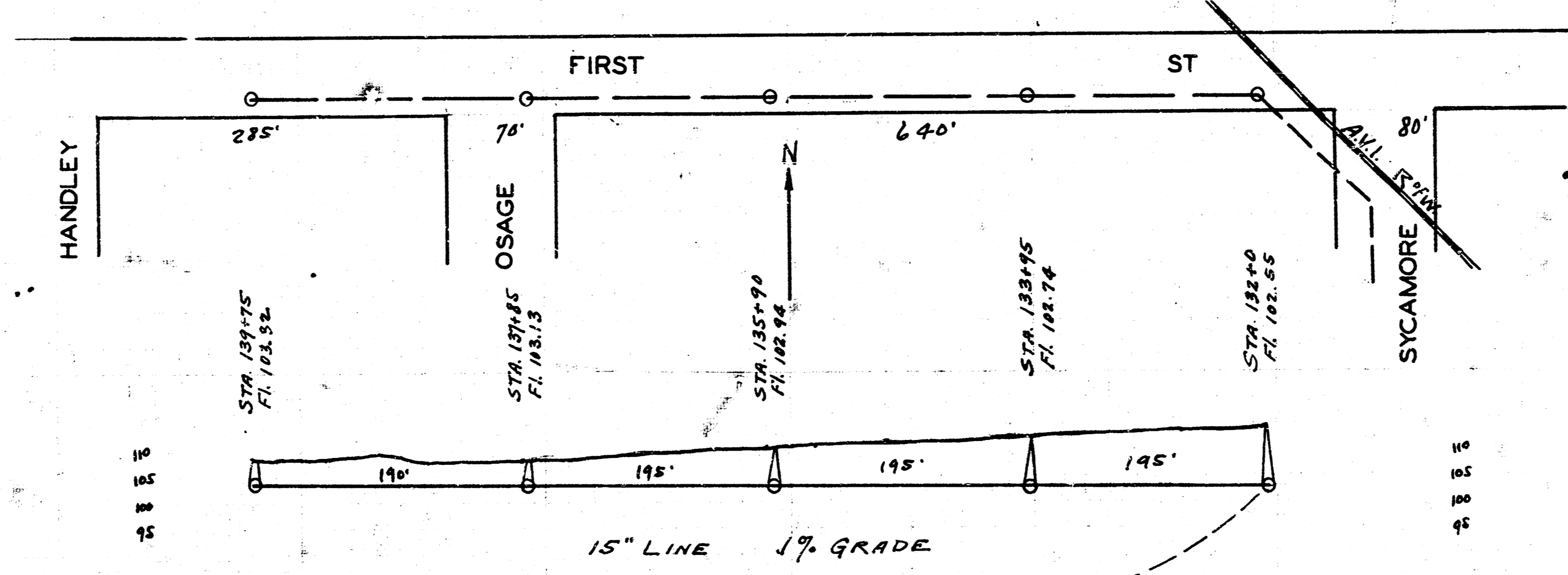
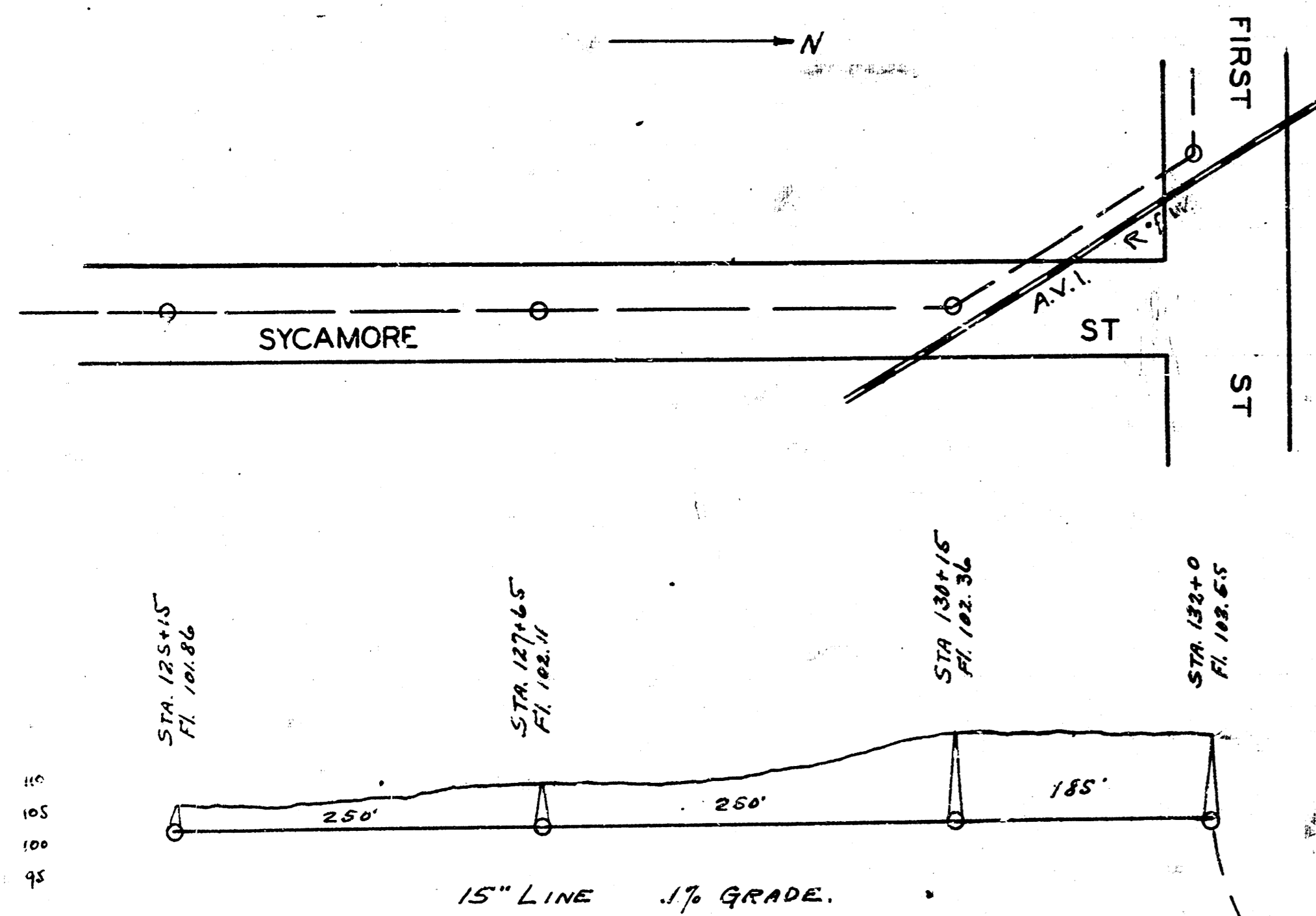
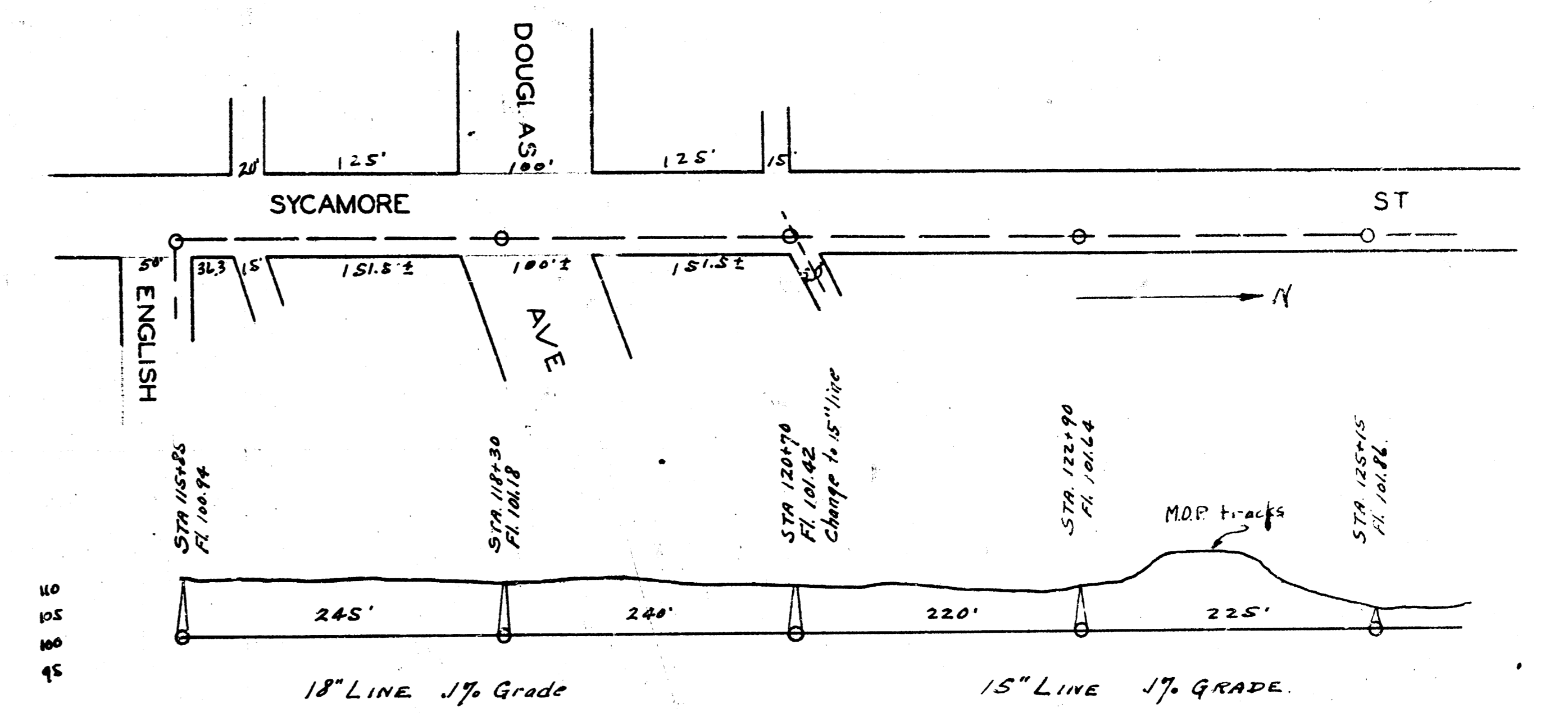
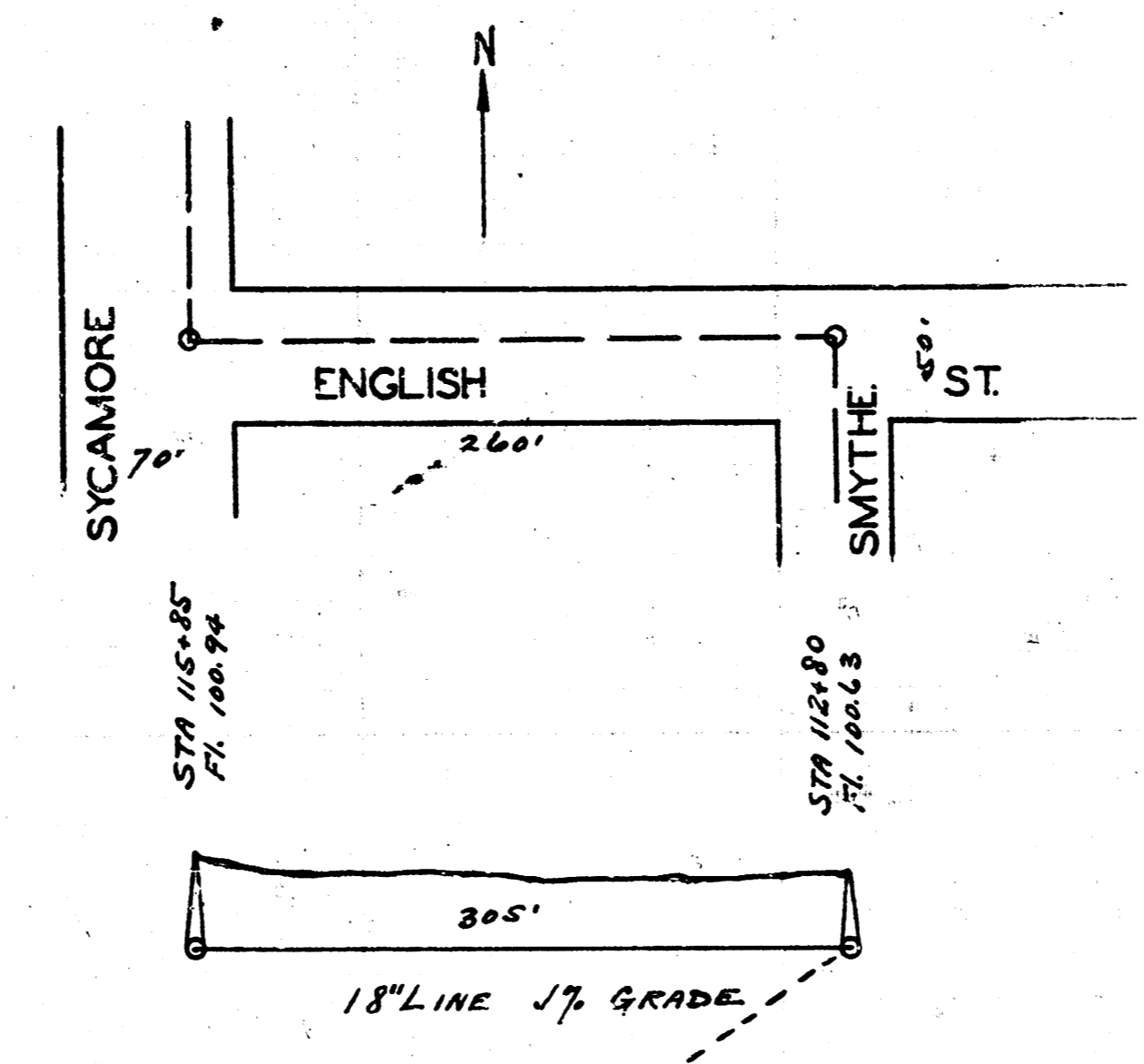
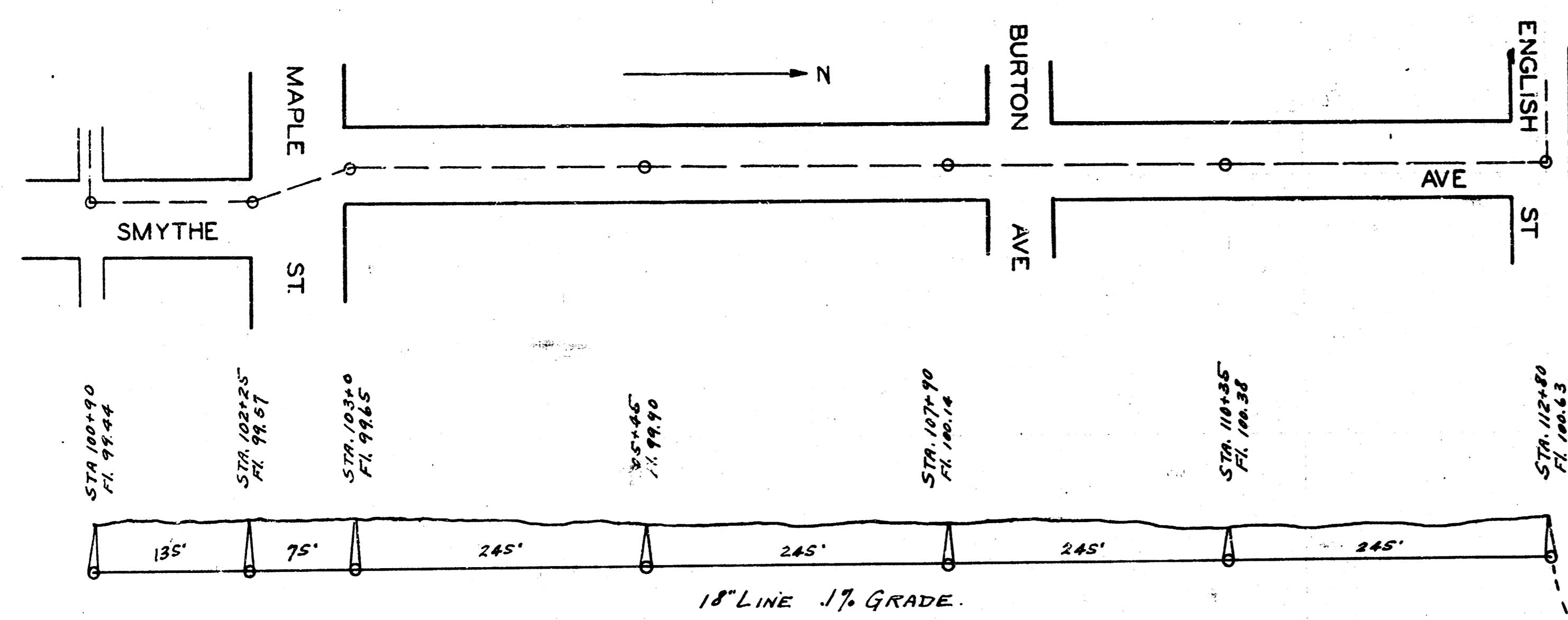


SAN. SEWER MAIN DIST. 21.

SHEET 2 3 SHEETS

B.M. 110.69 M in M^cCabe ctr. of wt. at N.S. ally. N.S. of W+W R+W on E.S. of Sycamore.
B.M. 103.95 on cb. S.E. Sycamore + M^cCormick.





SAN. SEWER MAIN. DIST. 21.
SHEET 3 3 SHEETS

BM. 10177 Std. S.W. Cor. of Seneca + 1st
BM. 11150 Iron in thimble S.E. Cor. of alley So. of
Douglas + E.S. Sycamore.