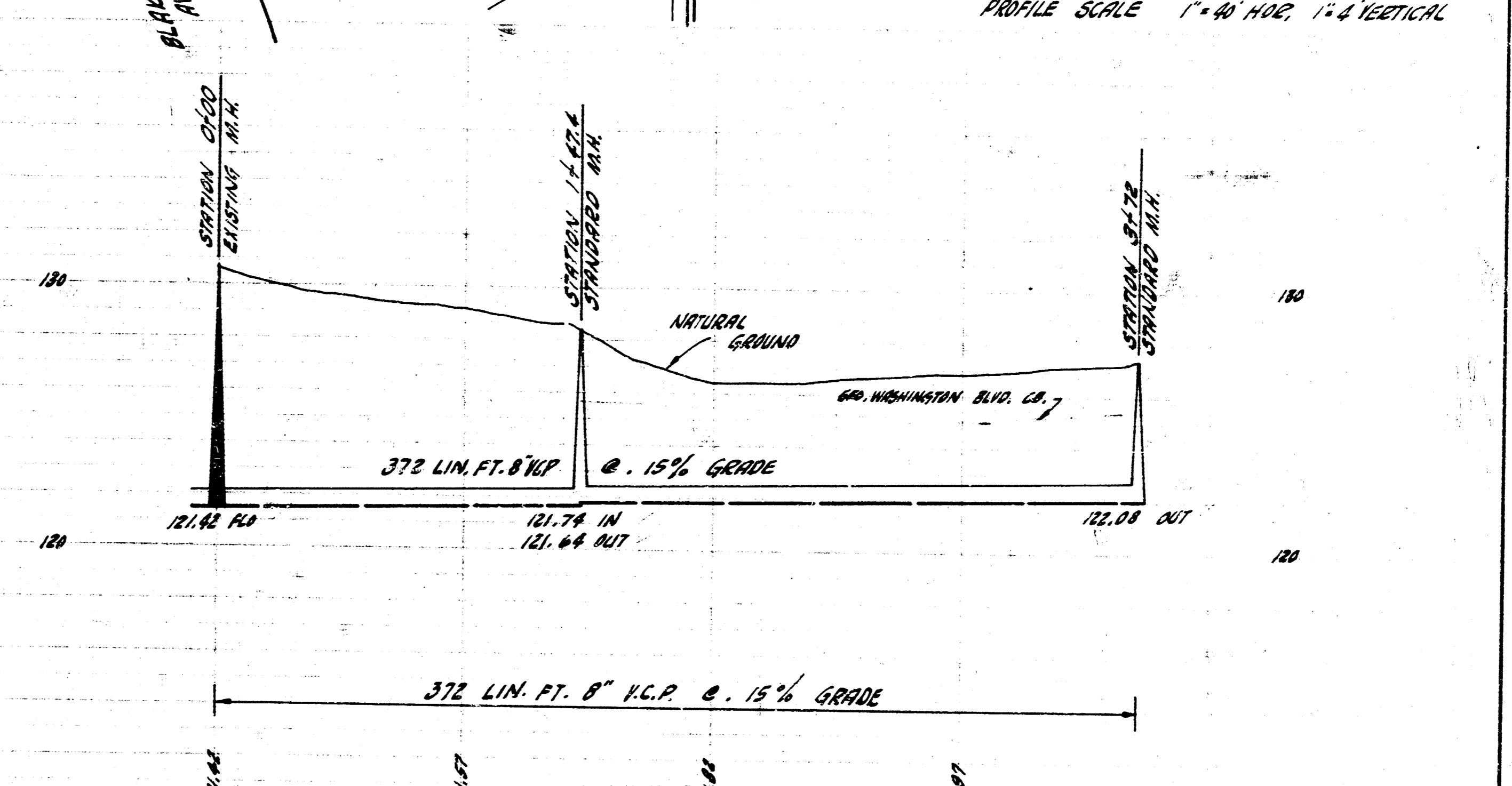
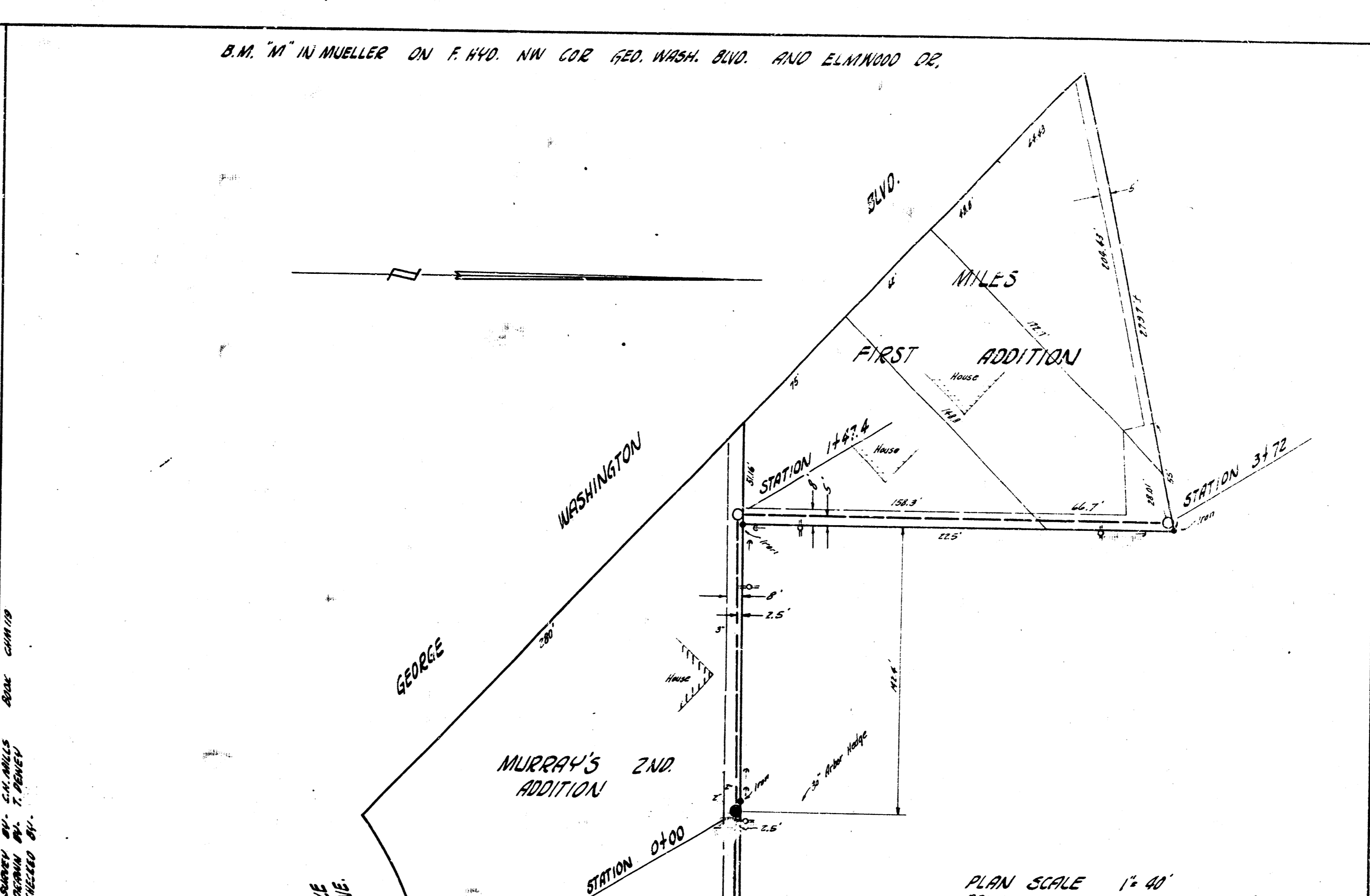


EXT. OF LAT. 4 SUB. A SAN. SEWER 21
 CITY OF WICHITA, KANSAS
 B.E. SMITH CITY ENGINEER
 PRIVATE JOB - DATE



LAT. 6-SUB. 6 WAR. INDUSTRY SEWER
 CITY OF WICHITA, KANSAS
 B.E. SMITH CITY ENGINEER
 PROJ. NO. C28-43 DATE-