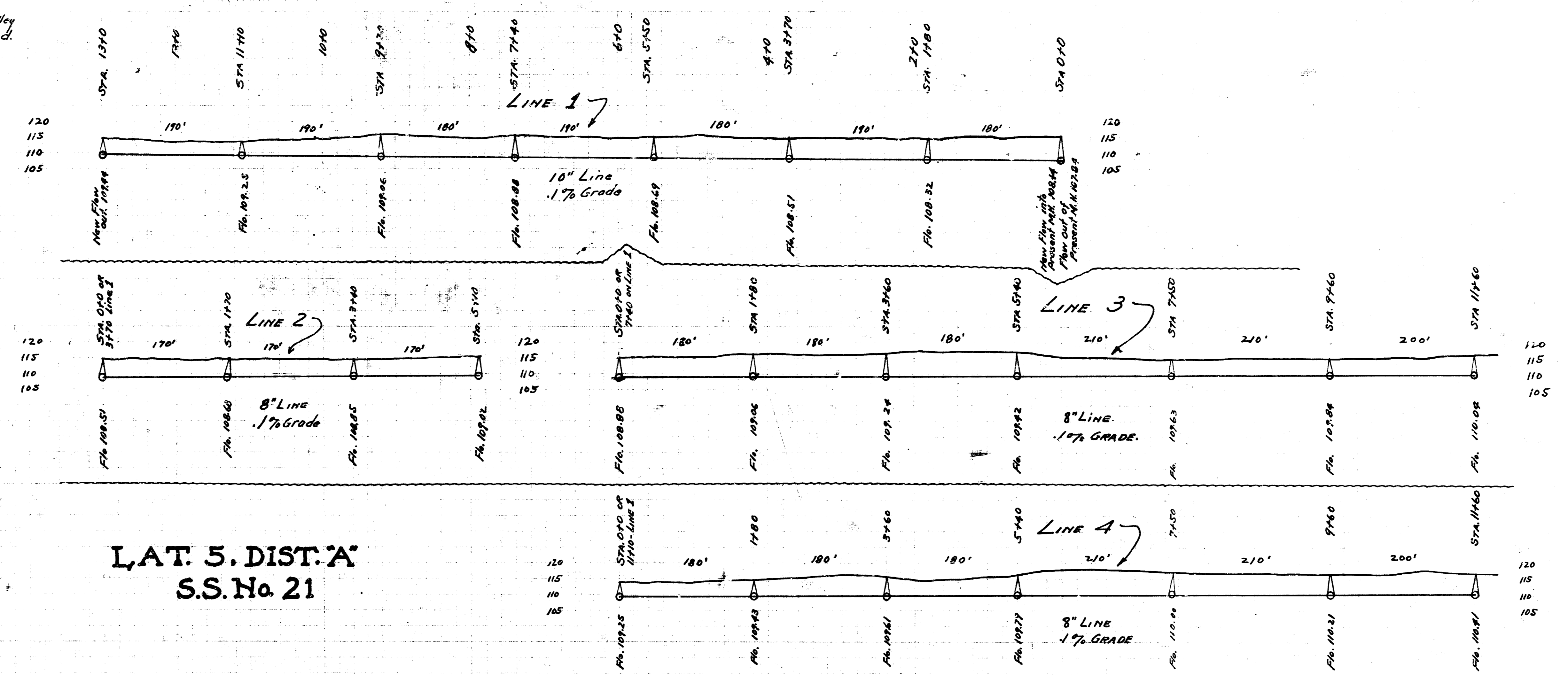
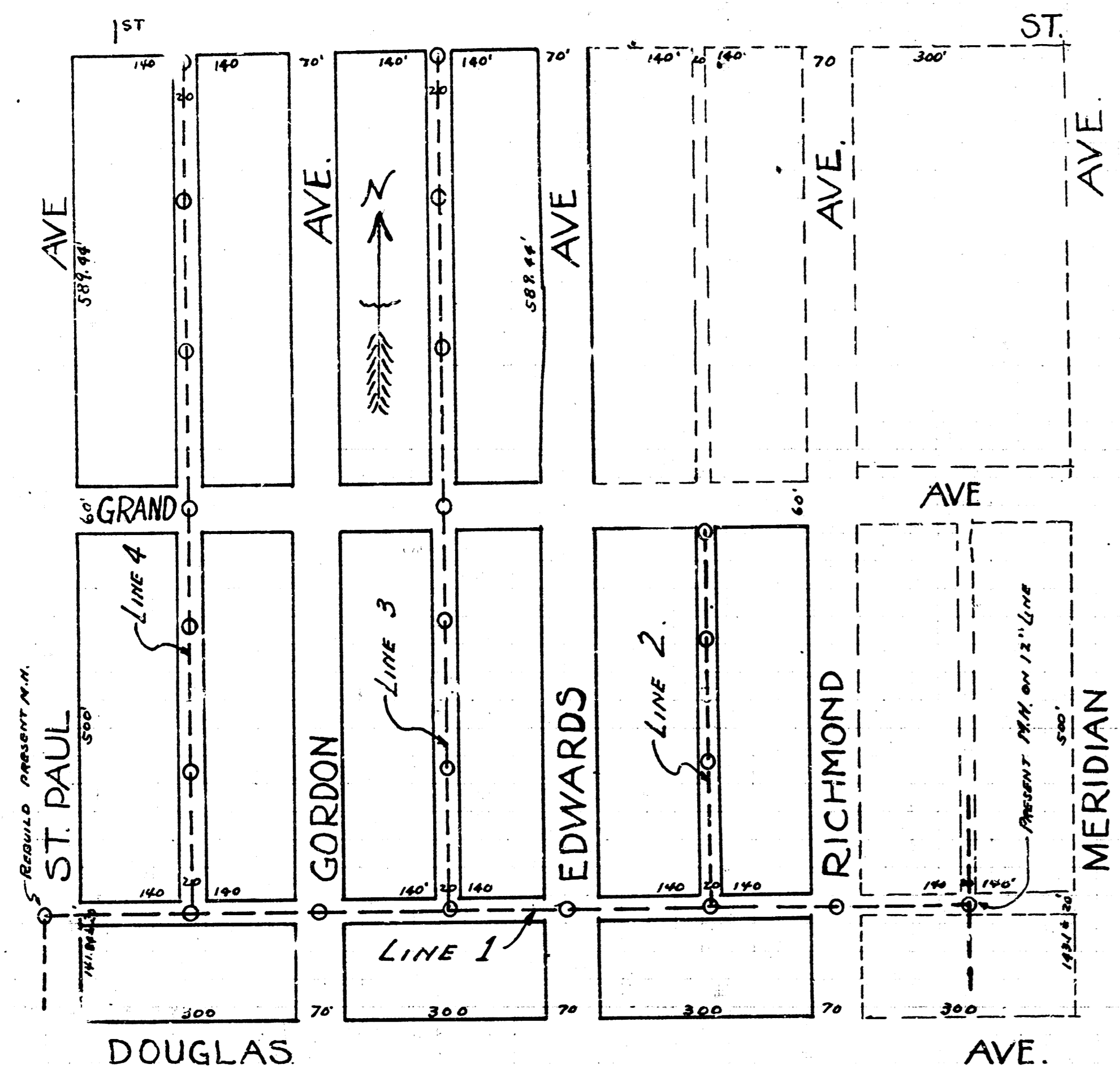
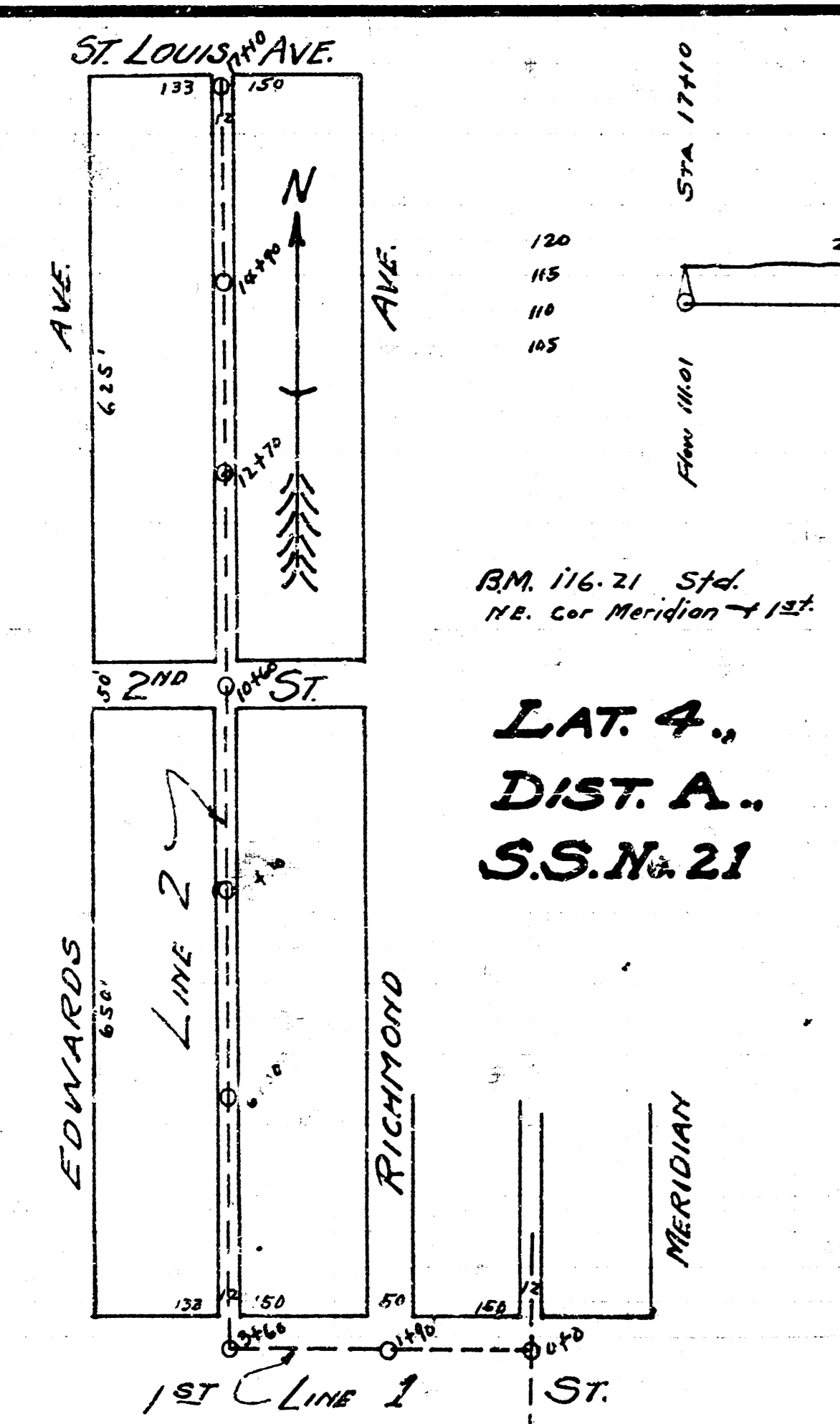


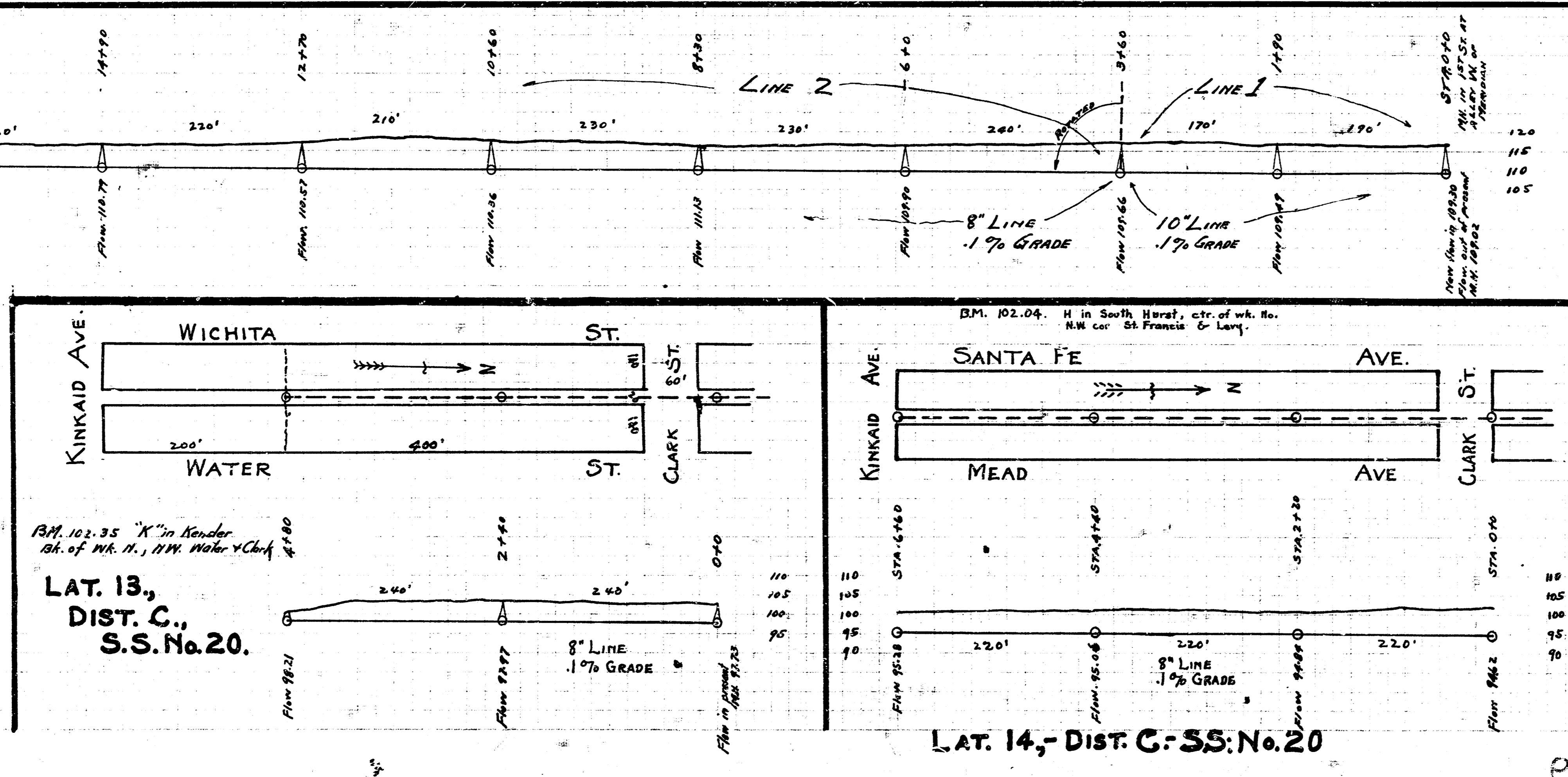
BM 114.86 "K" in Kensler in ctr. wk. N.S. of Alley N. of Douglas - W.S. of Richmond.



LAT. 5. DIST. A.
S.S. No. 21

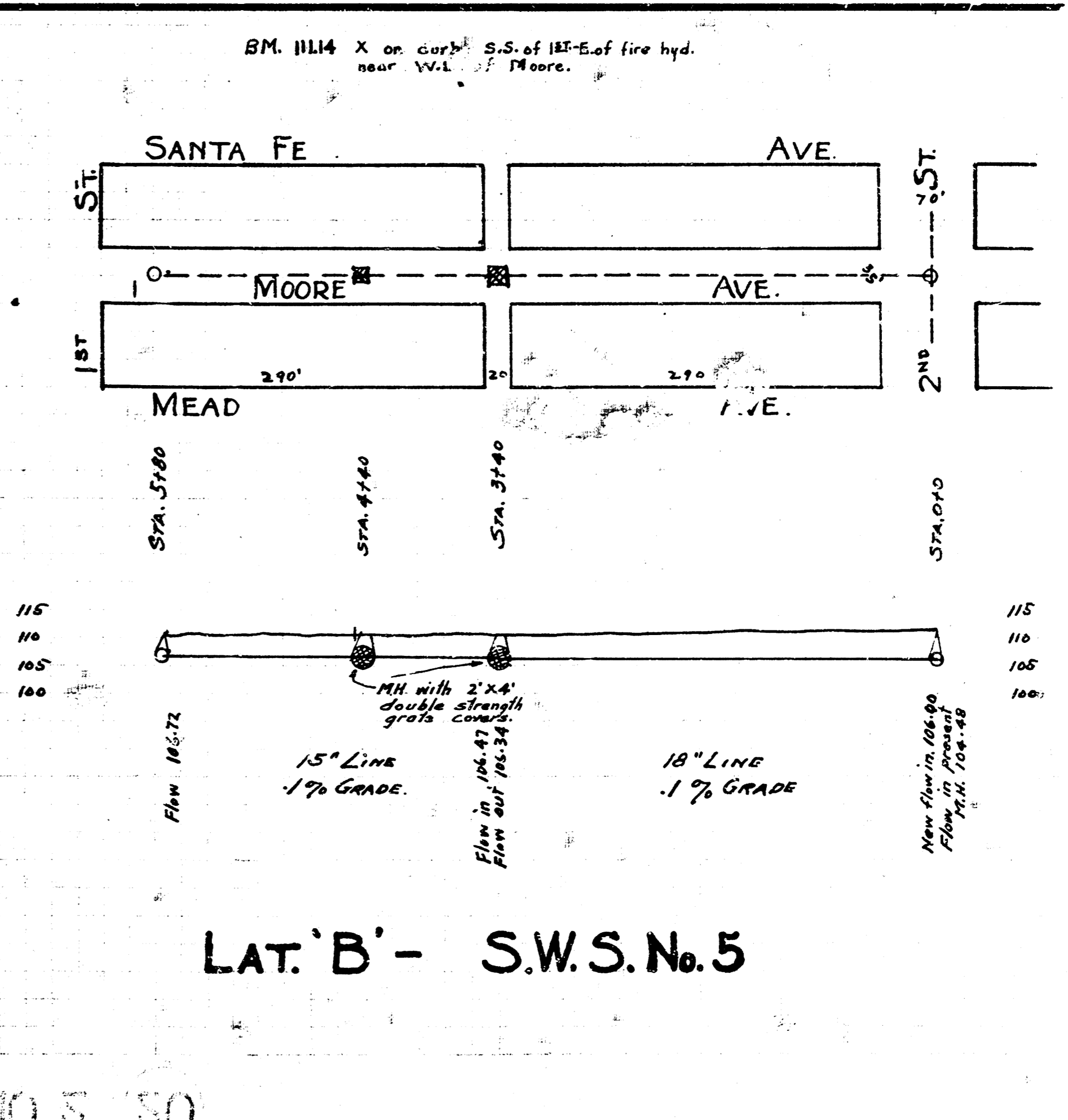


LAT. 4.,
DIST. A.,
S.S. No. 21



LAT. 13.,
DIST. C.,
S.S. No. 20.

LAT. 14., DIST. C., S.S. No. 20



LAT. B' - S.W.S. No. 5

2018