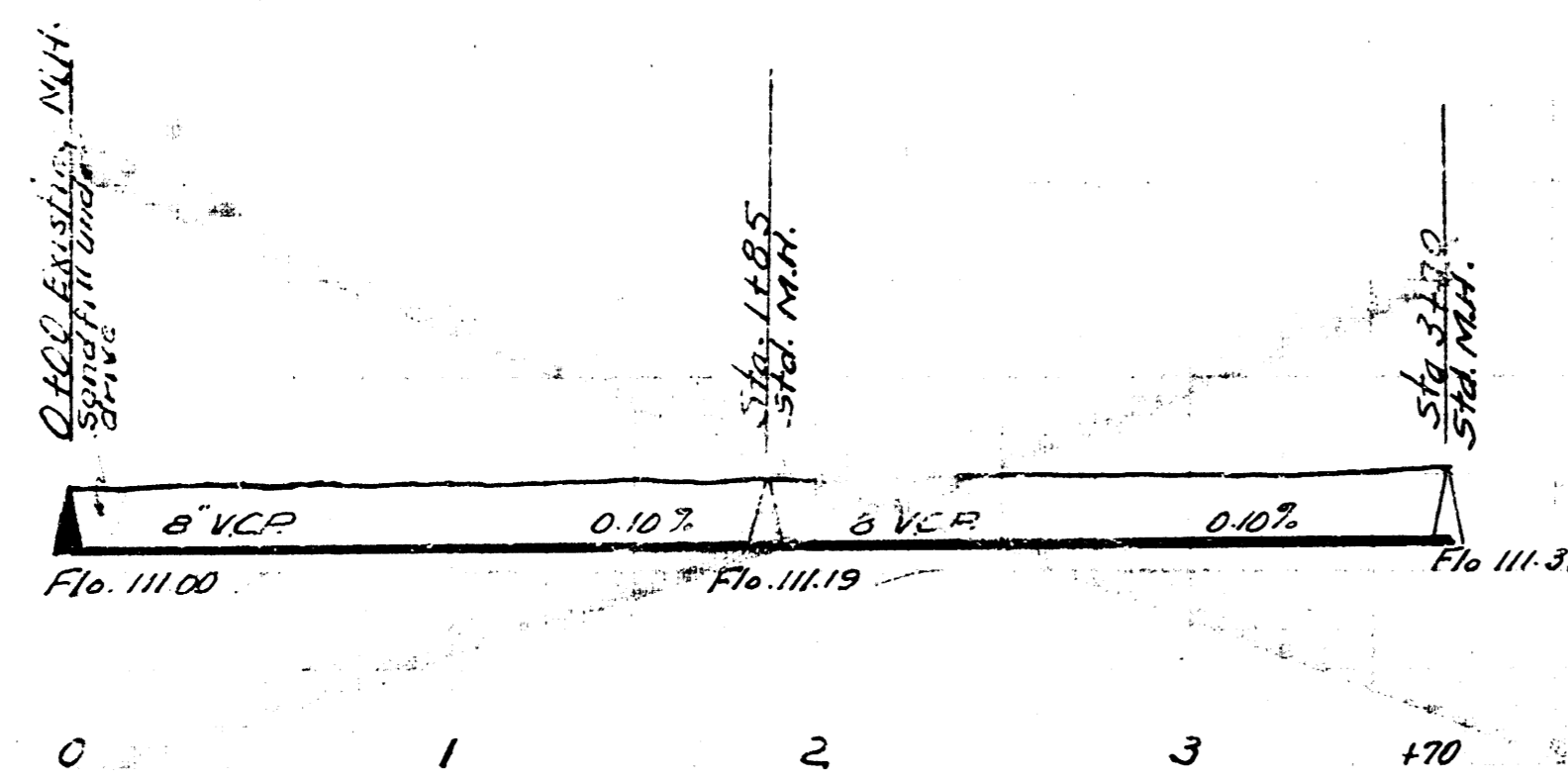


B.M. 117.41 50. Rim M.H. 0100

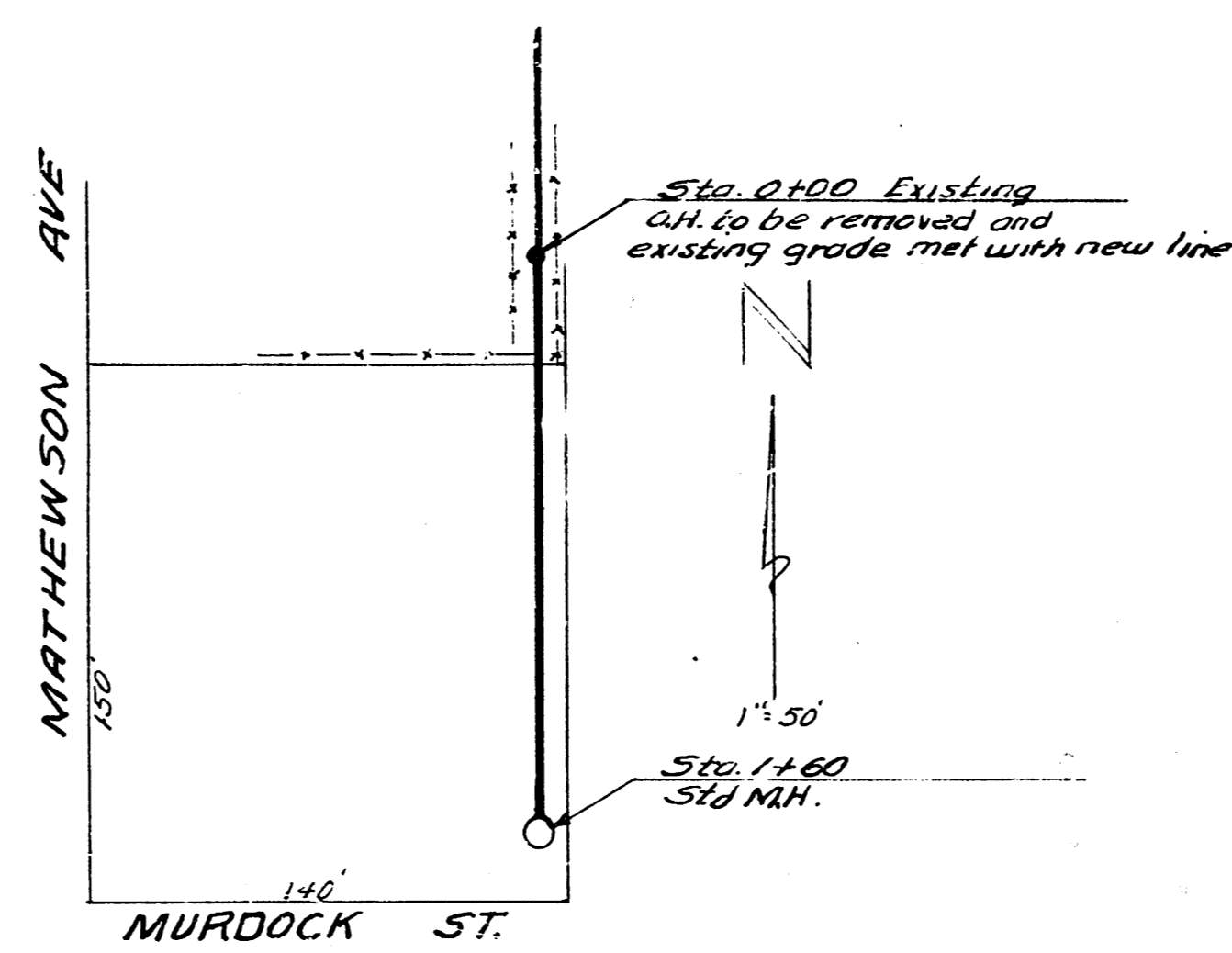


L.H.M.  
L.H.M.  
L.H.M.

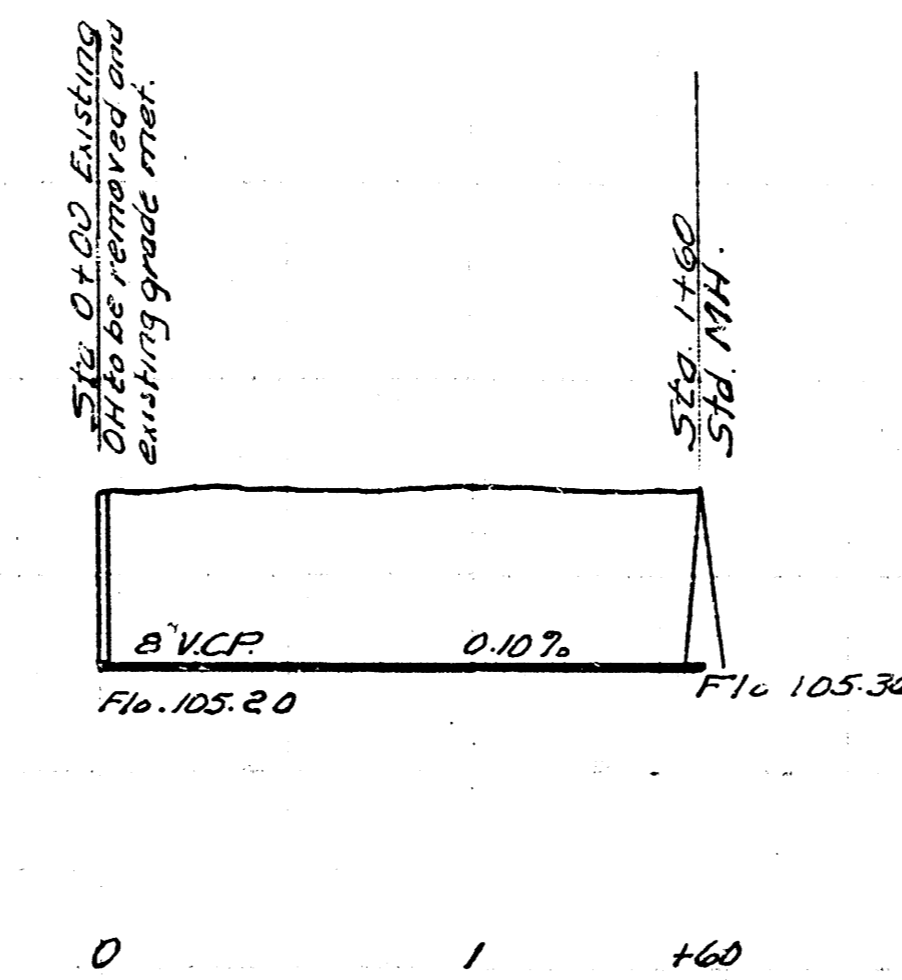
A-19

L.H.M.  
L.H.M.  
L.H.M.

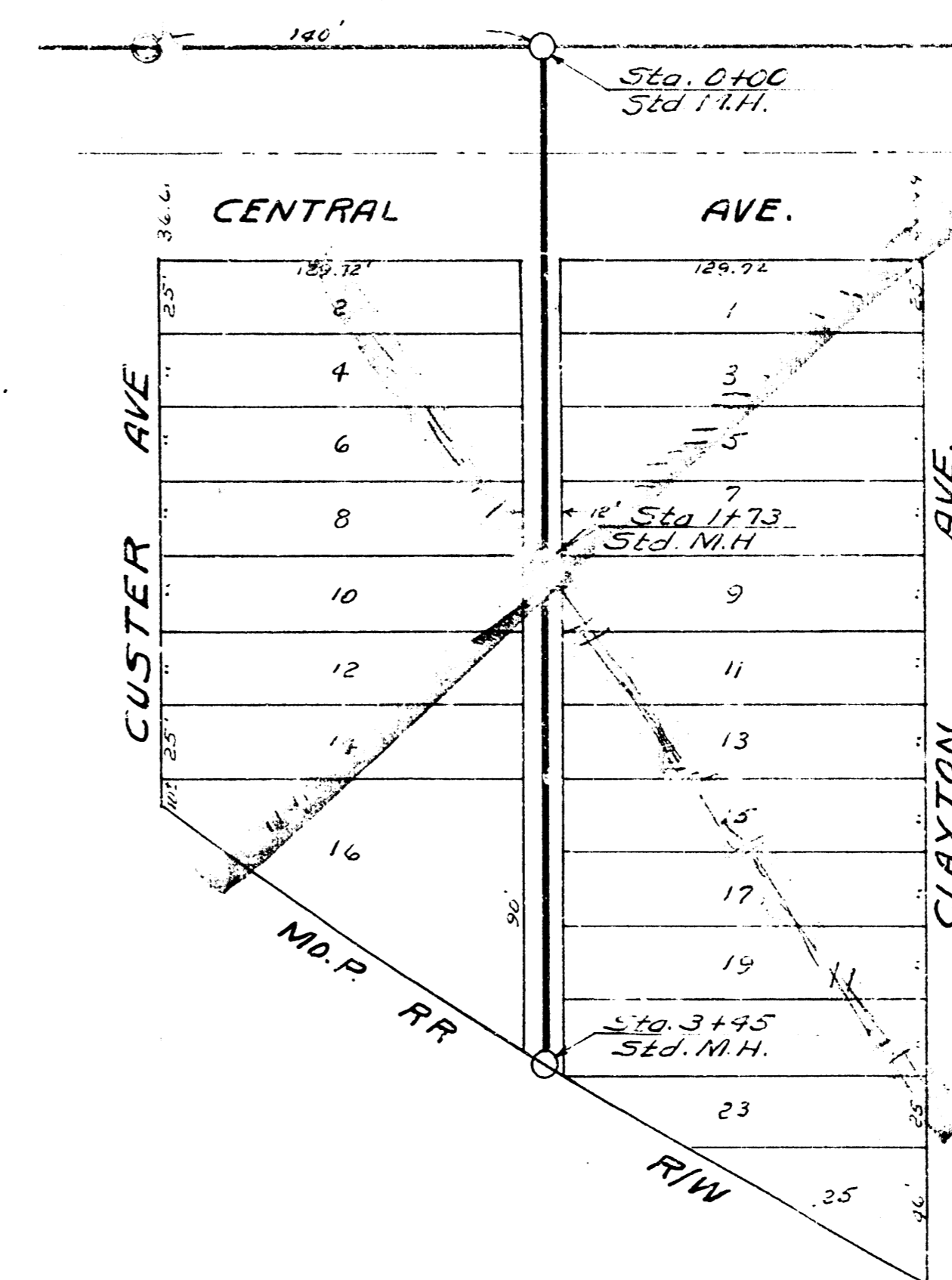
A-19



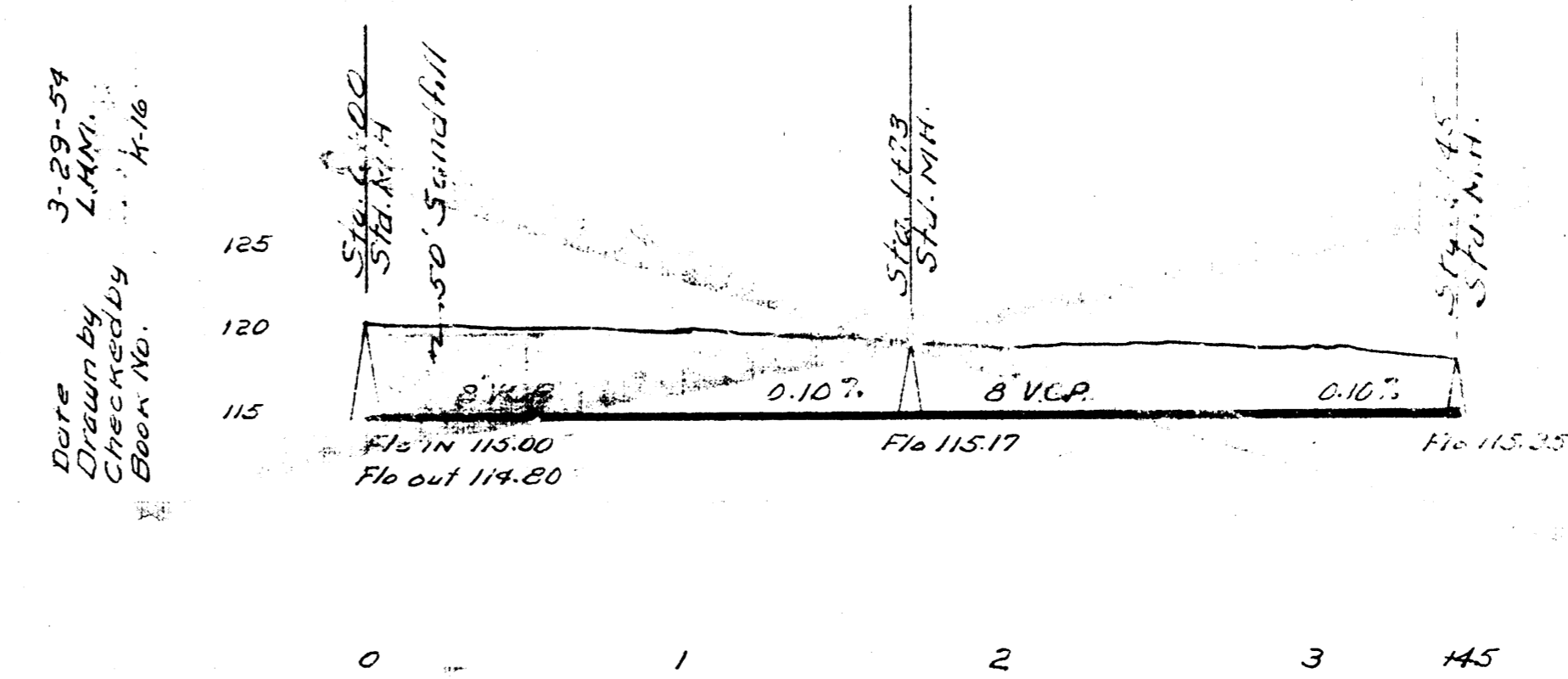
B.M. 113.01 Iron in thimble N.S. MURDOCK & MATHEWSON



Date  
Checked by  
Book No.



B.M. 121.29 "N" in Muller F.P. Sec. Clayton & Central



LAT. 2 DIST. 4 SS. 12  
CITY OF WICHITA KANSAS  
B.E. SMITH CITY ENGINEER  
Proj. No. C-24-13

LAT. 40 SS. 20  
CITY OF WICHITA KANSAS  
B.E. SMITH CITY ENGINEER  
Proj. No. C-24-9

LAT. 35 DIST. A SS. 21  
CITY OF WICHITA KANSAS  
B.E. SMITH CITY ENGINEER  
Proj. No. C-24-16