

N

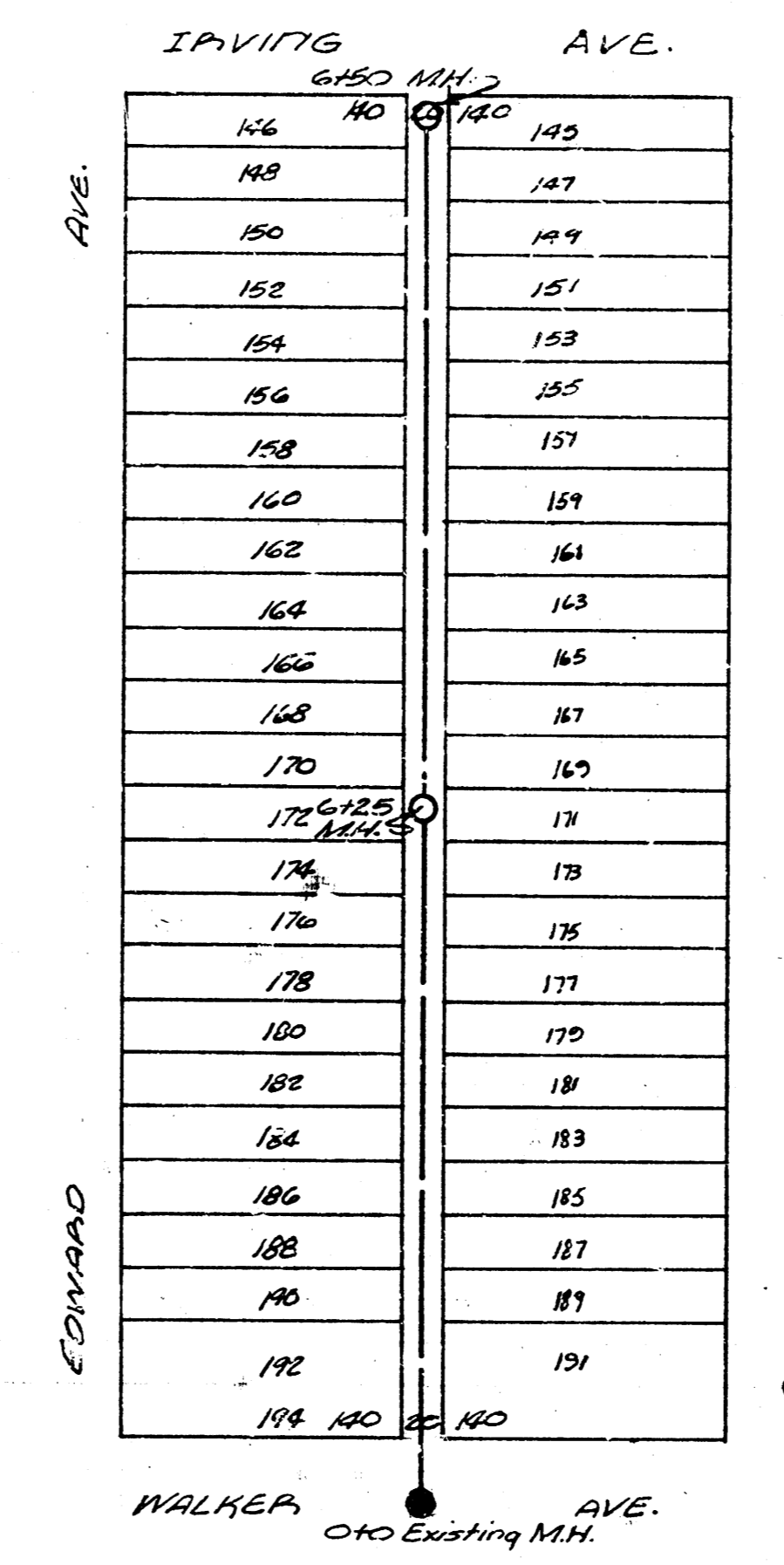
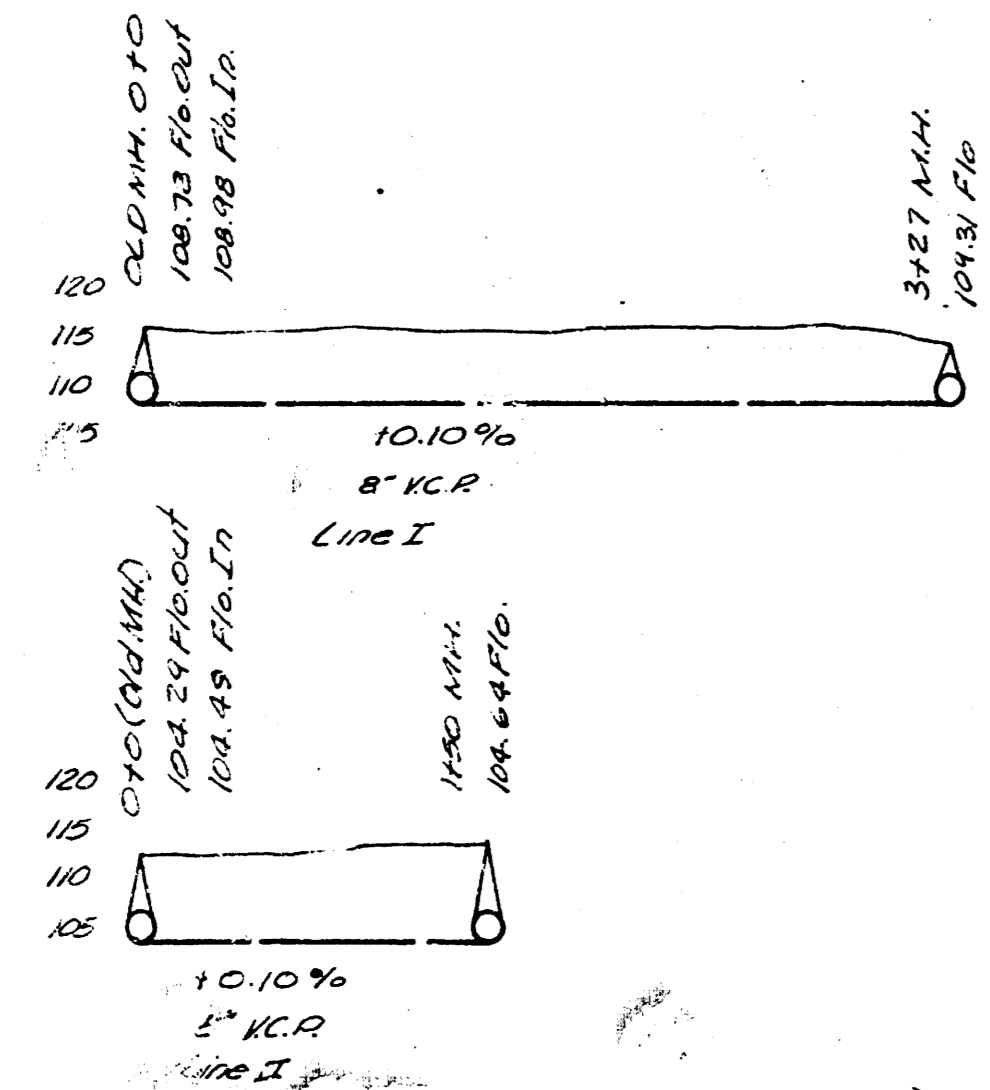
B.M. 11690 17' R.M. M.H. (Sta. 0+0 Line I)
 B.M. 11663 17' R.M. M.H. (Sta. 0+0 Line II)

OBJECTS TO BE REMOVED & REPLACED.

Line I.
 27' Spruce & Flower Garden.

Line II.
 23' of Lattice Fence & 10' of Wire Fence on S.S. Murdock.

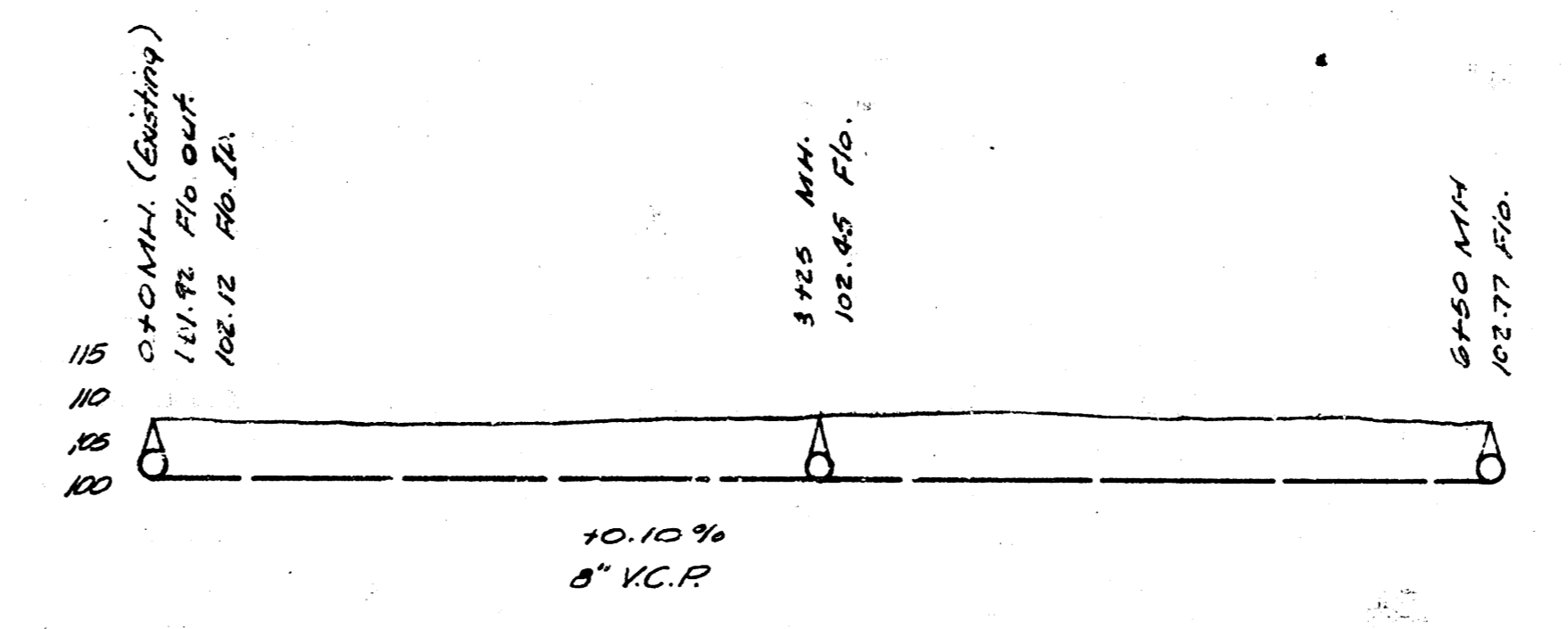
LAT 11, DIST D, MAIN 12



N

B.M. 10892 E.P.I. (Sta. 0+0)
 B.M. 10828 75' in Blake bk. of n. & s.e. SE. MERIDIAN WALKER.

LAT 3, DIST B, MAIN 21



LAT 11, DIST D, MAIN 12
 LAT 3, DIST B, MAIN 21
 CITY OF WICHITA, KANSAS
 W. W. ... City Engineer
 May 1948. Proj 110.