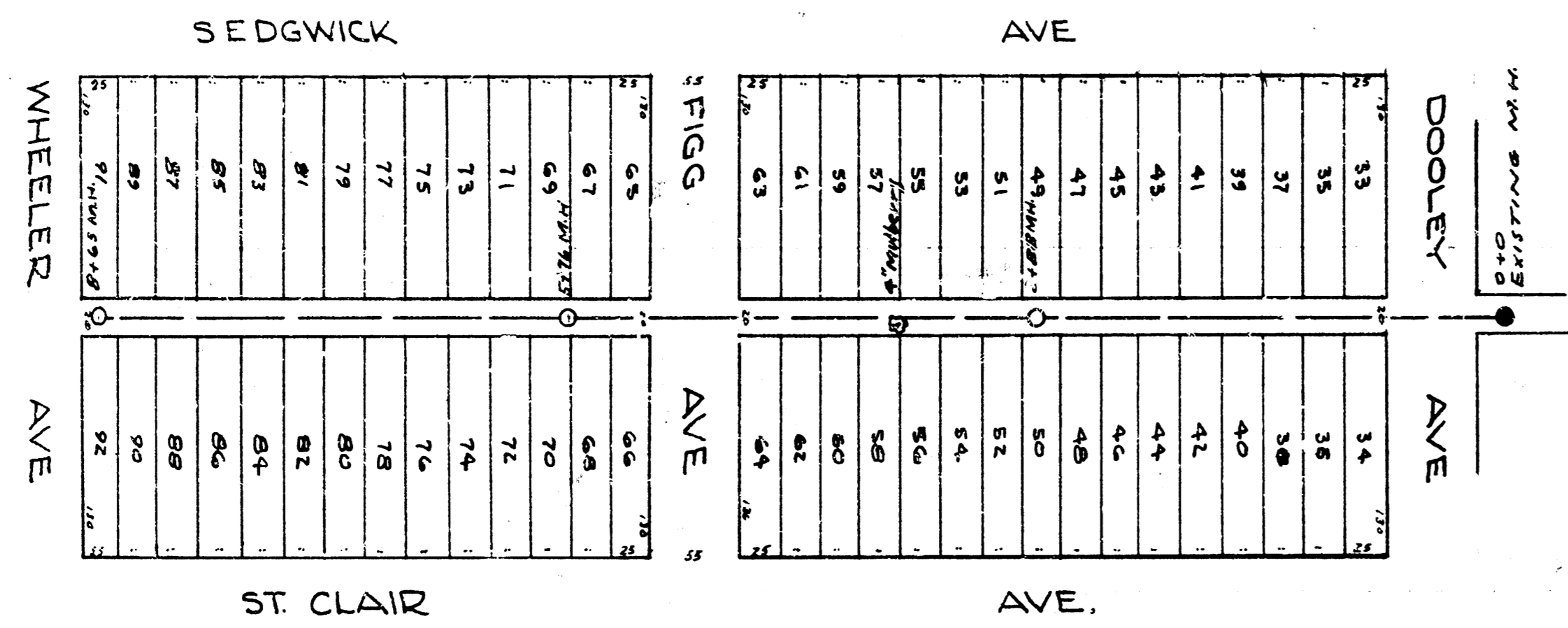
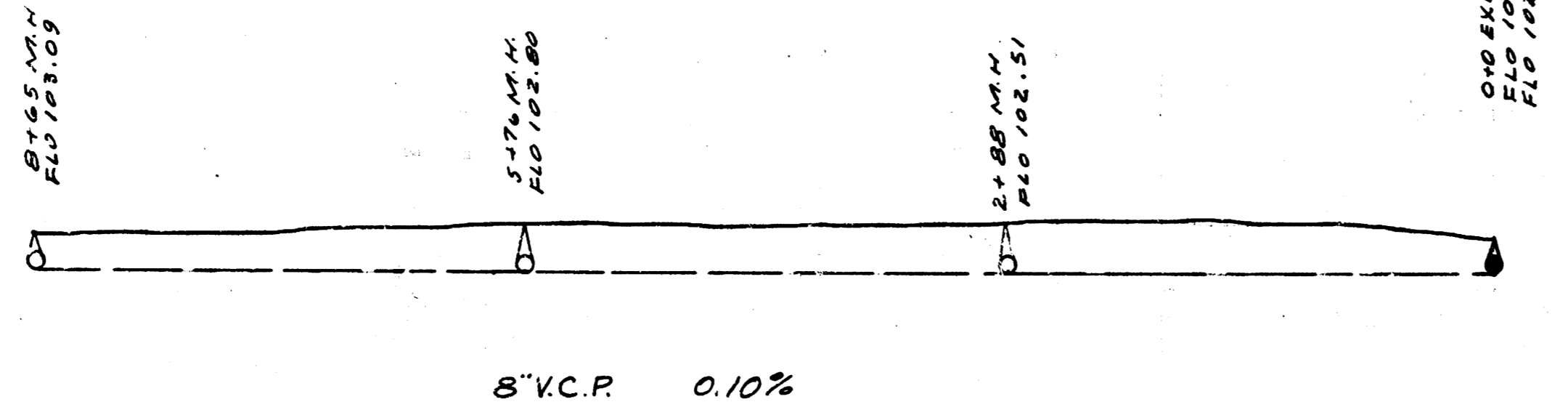


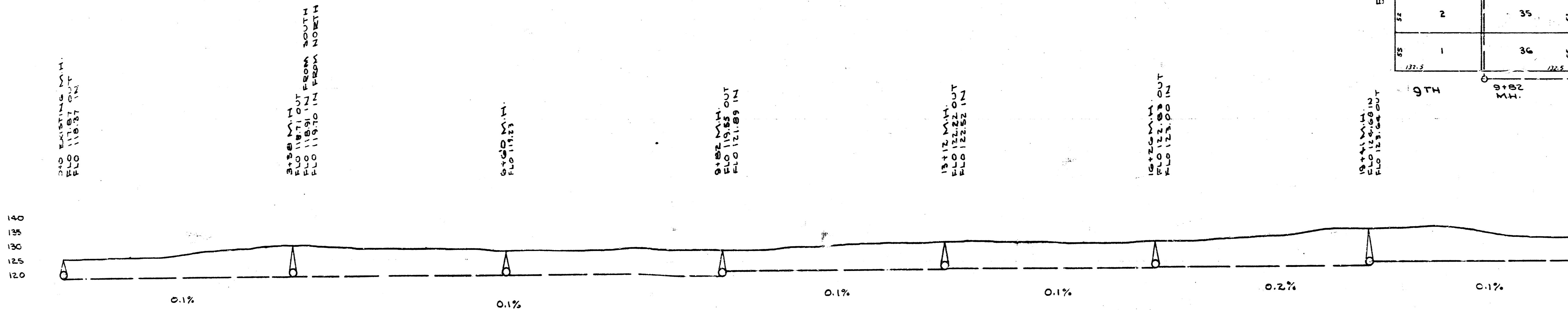
BM 109.64 60" Spike in P.P. Pole N.S. Dooley W.S. Alley Between Sedgwick & St. Clair.



LAT. 2, DIST. B, S.S. # 21  
Project No. C20-38

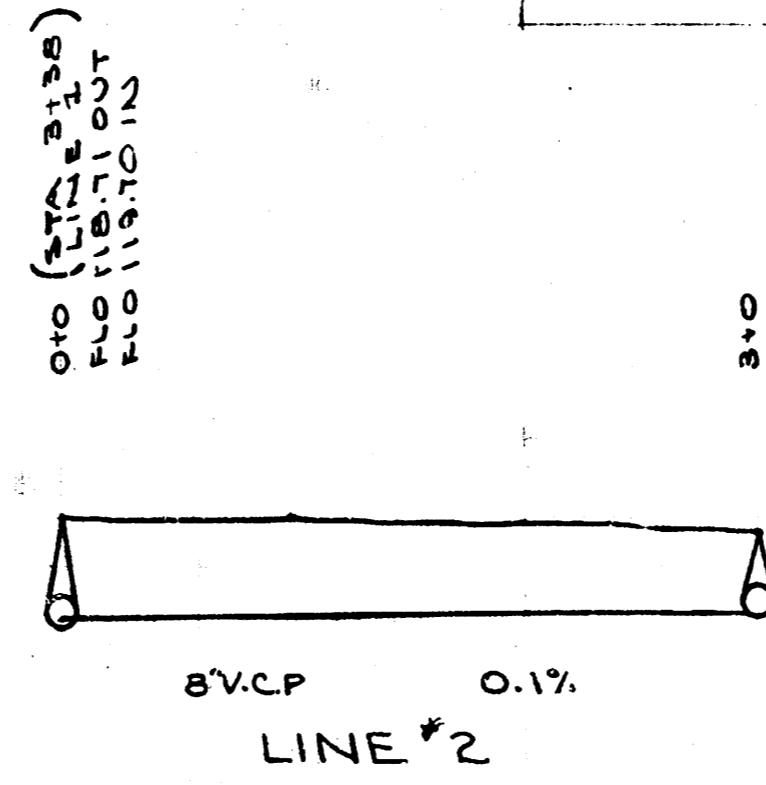


BM 125.00 60" Spike in P.P. 6'x6' 10th E.S. Alley West of Estelle  
BM 130.71 N.E. Cor Brick Lodge House S.S. Line E.S. Volusia  
BM 131.35 " " in Globe S. Co. 9th & E.S. Volusia.



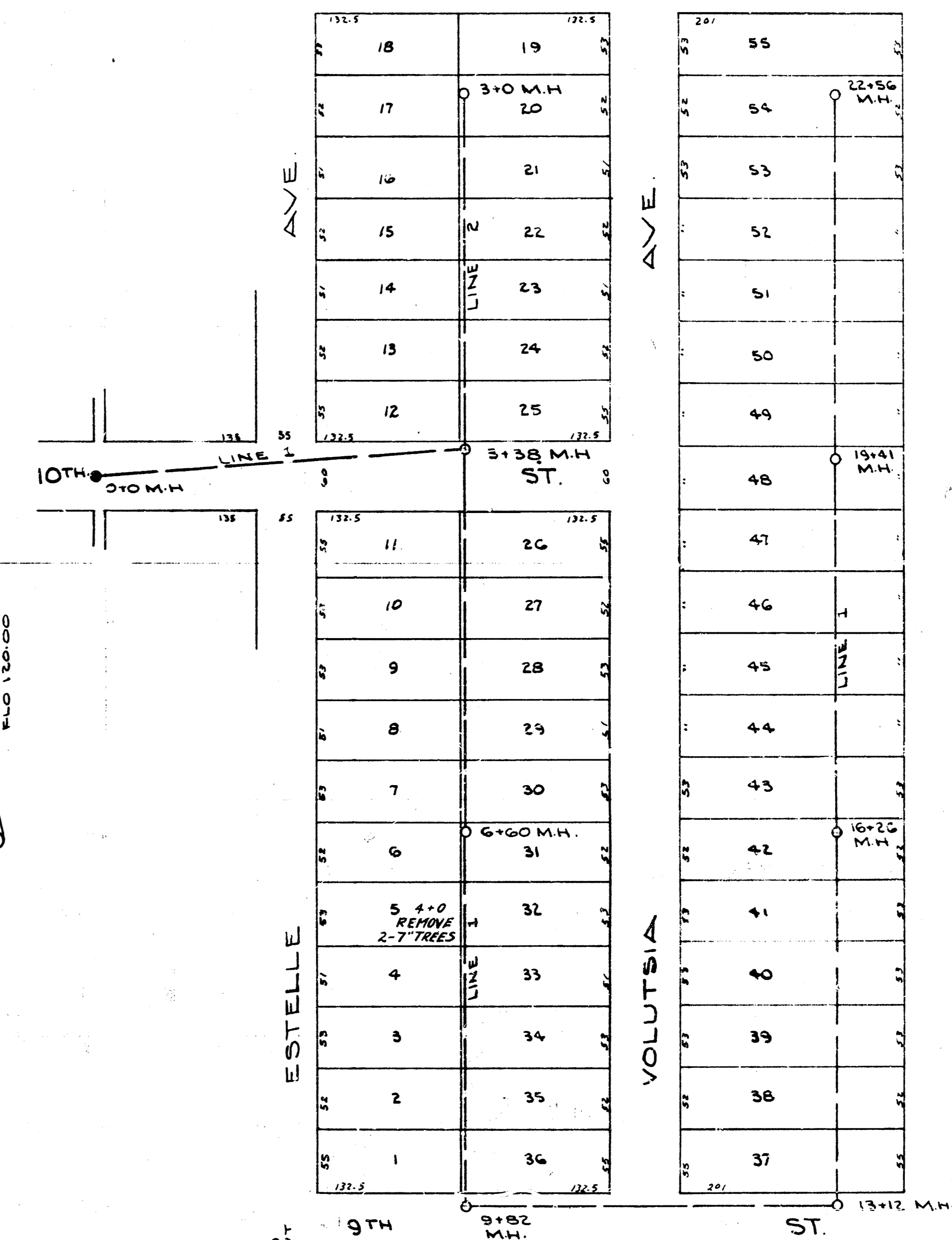
V.C.P.  
LINE # 1

Ties For 0+0 M.H.  
3 18.65 S. to 60" Spike B.M.  
3 39.15 N.E. to S.W. Cor Garage  
3 52.05 N.W. to S.E. Cor House  
3 28.60 N. to Blk Wk. N.S. 10th



V.C.P.  
LINE # 2

LAT. 2, DIST. E, S.S. # 12



DEPARTMENT OF SERVICE  
CITY OF WICHITA, KANSAS  
ENGINEERING DIVISION  
L.K. WHITE - CITY ENGINEERING  
Sanitary Sewer Plans  
Scale 1" = 80'  
January 1947