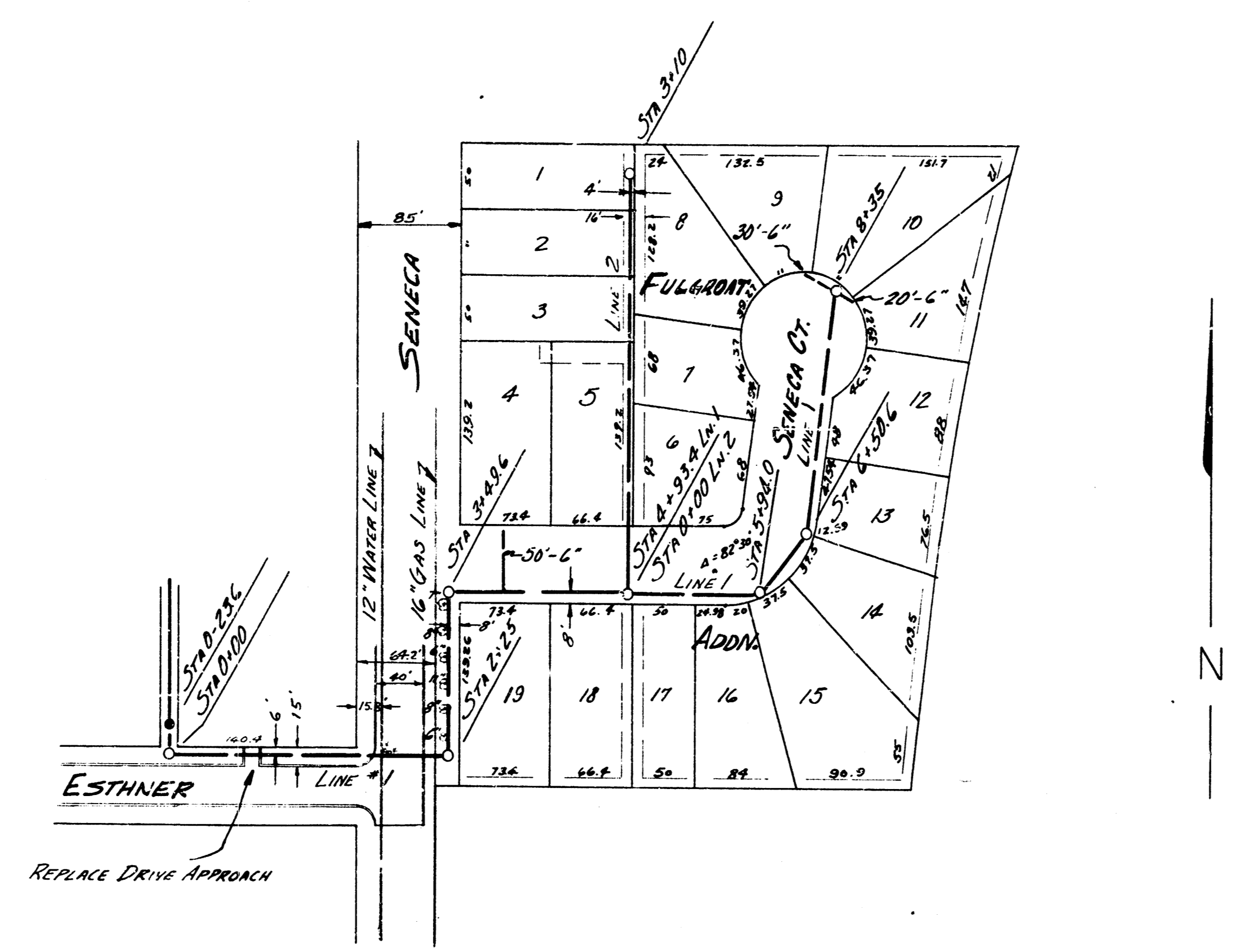


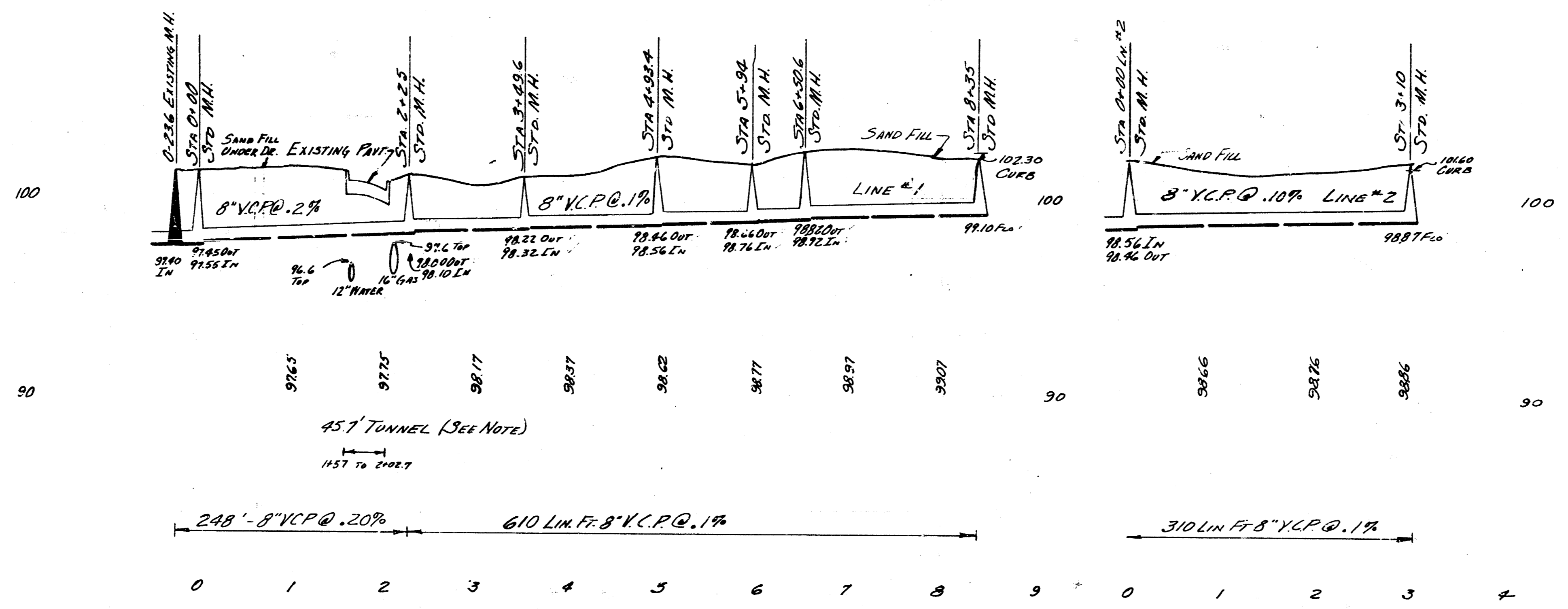
Survey J. M. Miller Notebook A-16
 Plans D. Sellers
 Checked
 Date Sept. 1955

B.M. 101.20 "X" on S. Co. ESTNER #WS Seneca



Note: Seneca crossing to be made in tunnel using 50' of cast iron pipe. Tunnel to be backfilled with 2 sack concrete through holes bored in the pavement. The bid price per lin ft of 8" C.I.P. shall include all expenses of tunneling, backfilling, materials, etc.

NOTE: SAND FILL 6" LINE #1 8" V.C.P. DITCH IN THE PARKING WHERE HOUSE DRIVES ARE PARKED.
 PLAN SCALE 1" = 80'
 PROFILE SCALE 1" = 80' HOR 1" = 4' VERT.



SUBLATERAL 1 DIST. E. S.S. 21
 CITY OF WICHITA
 B.E. SMITH CITY ENGINEER
 SEPT. 1955 PROJ. No. C25-62