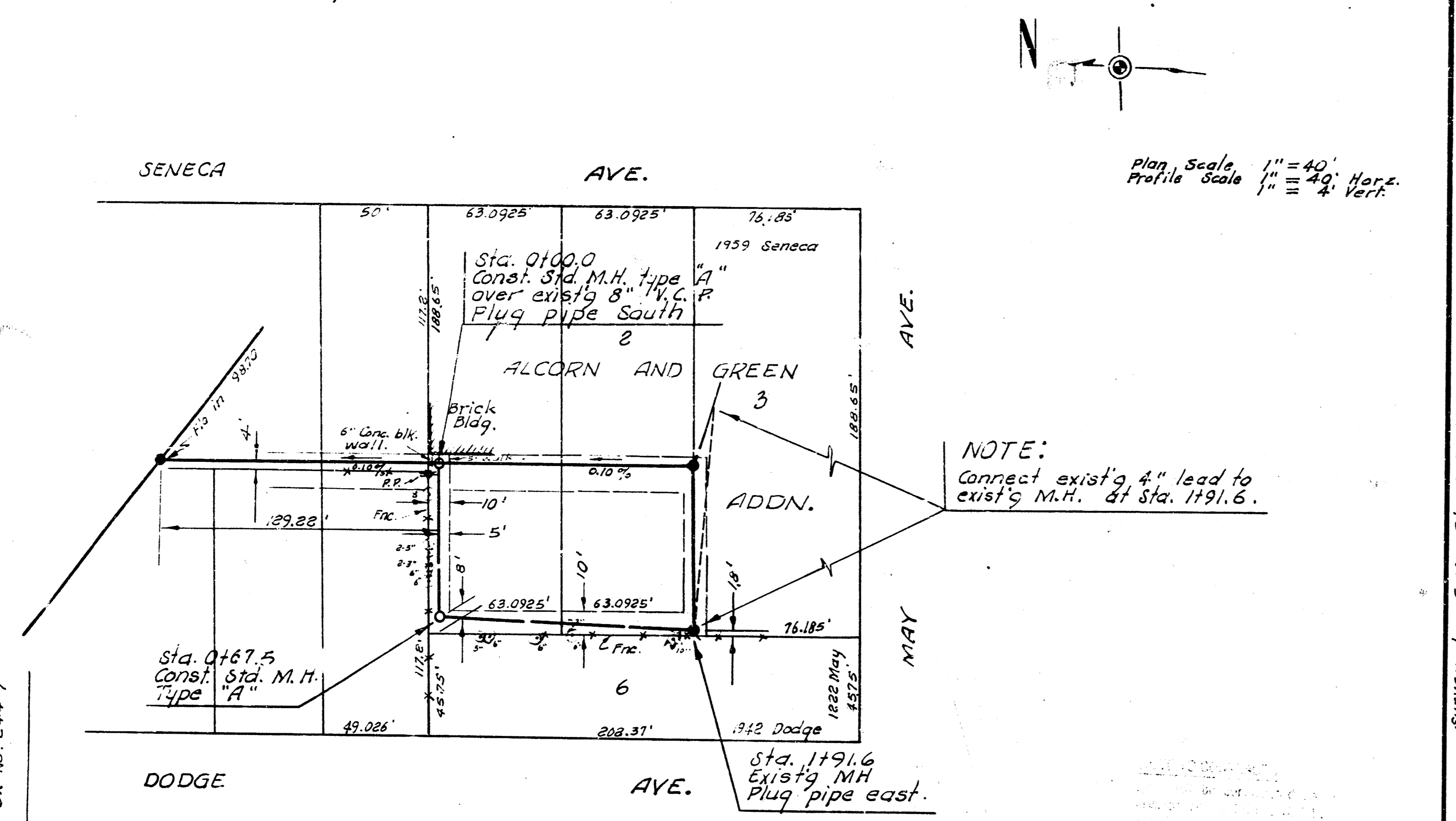


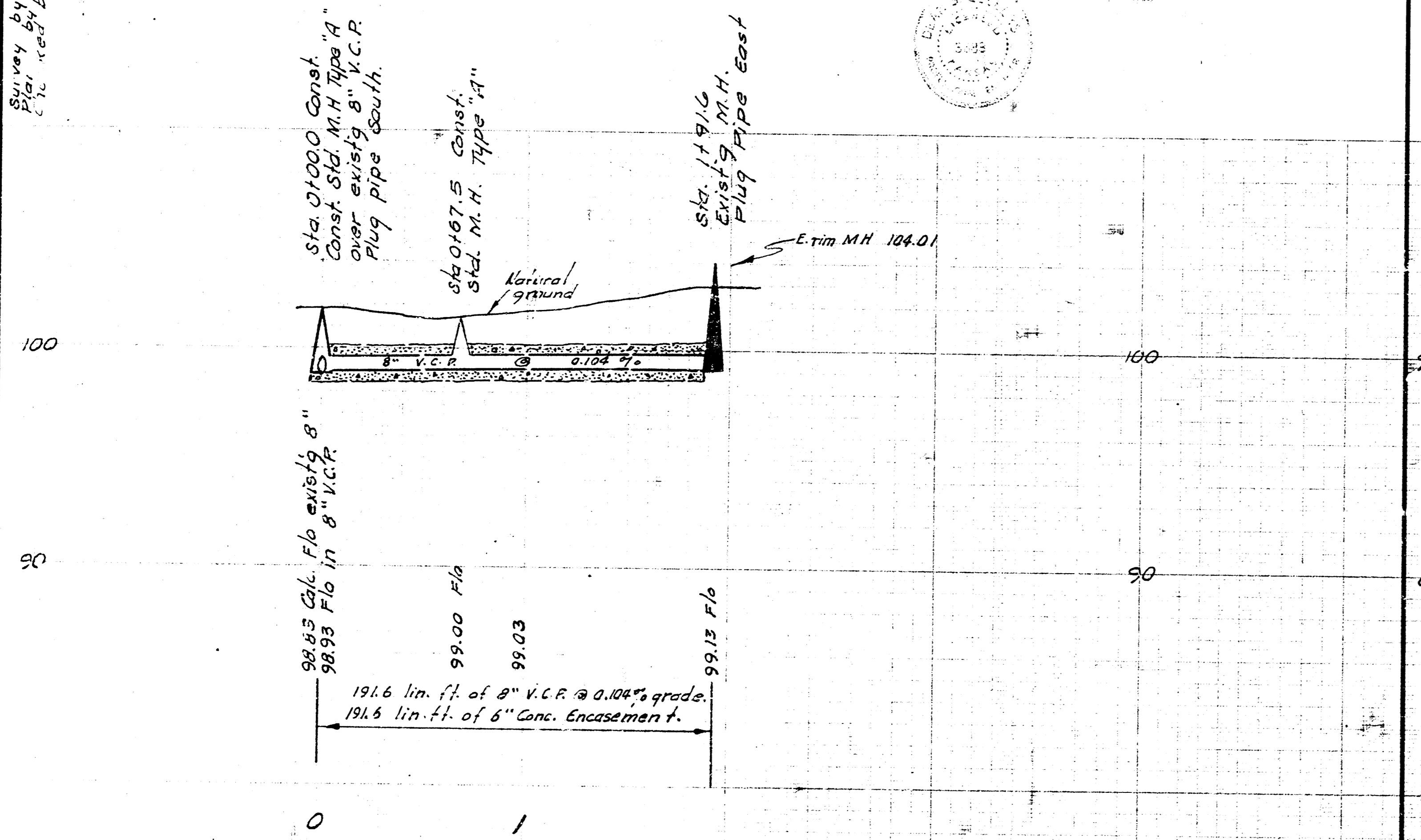
B. M. 103.10 "G" in globe Top E. cb Dodge
3' S. of N.L. May



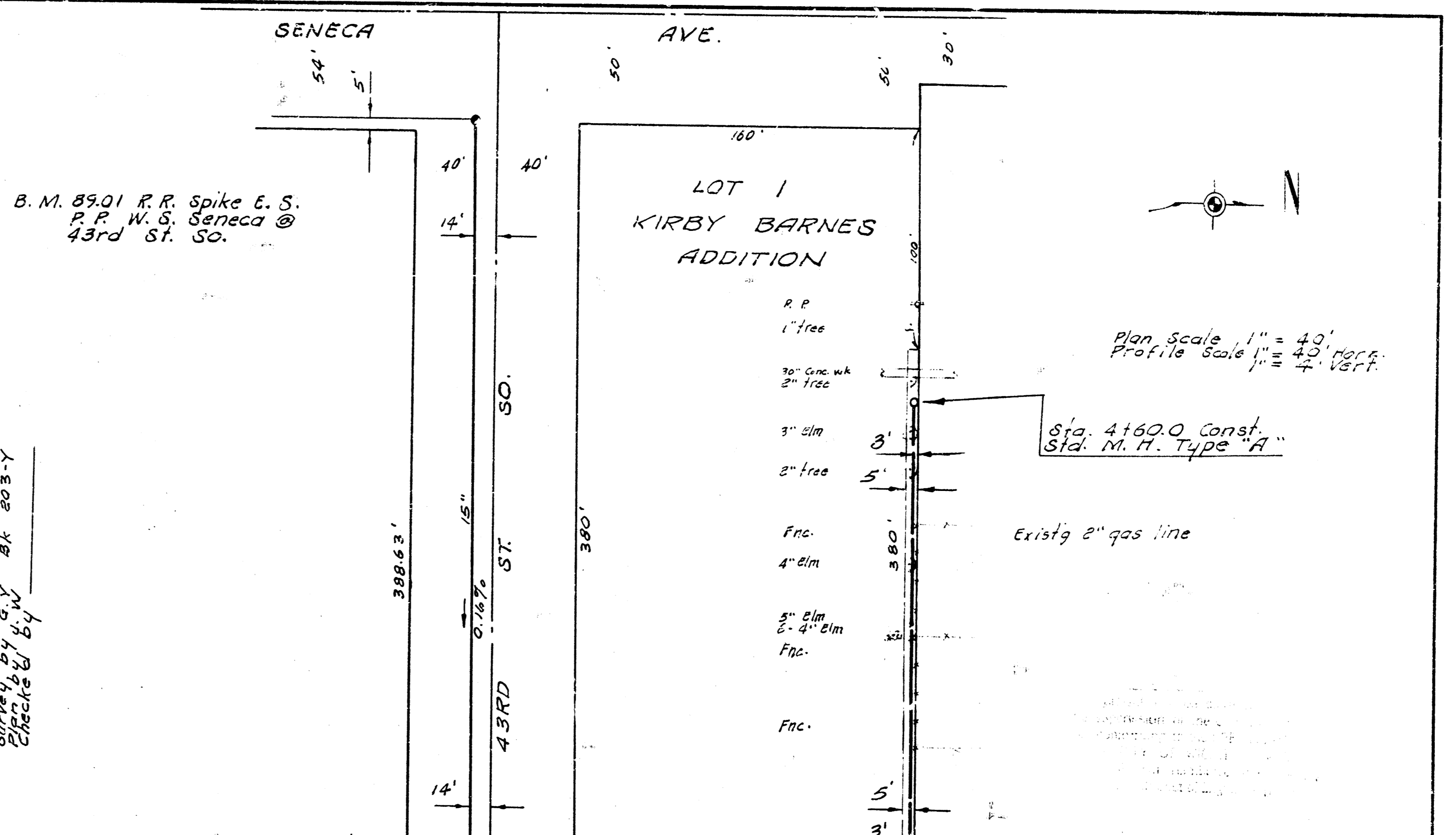
Plan Scale 1" = 40'
Profile Scale 1" = 4' Vert.

NOTE:
Connect exist'g 4" lead to
exist'g M.H. at Sta. 1791.6.

Survey by G.V. B.N. No. 244-Y
Checked by G.V. B.N. No. 244-Y



RELOCATION OF A PART OF
LAT. 2, DIST. E, S.S. NO. 21
CITY OF WICHITA, KANSAS
B. E. SMITH CITY ENGINEER
JAN. 1967. PRIVATE CONTRACT



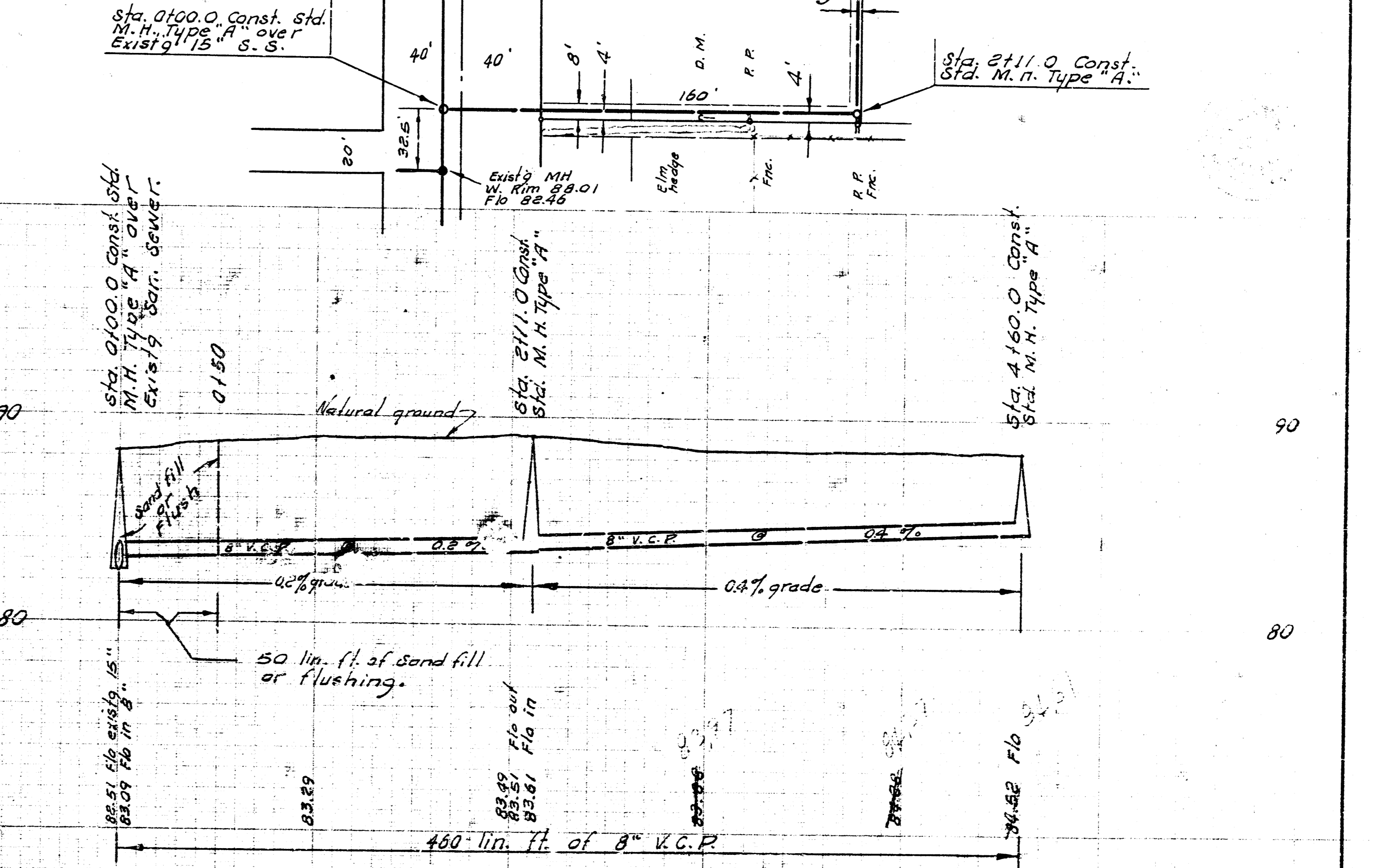
Plan Scale 1" = 40'
Profile Scale 1" = 4' Vert.

Sta. 4160.0 Const. Std. M.H. Type "A"

Exist'g 8" gas line

Sta. 2110.0 Const. Std. M.H. Type "A"

Survey by G.V. B.N. No. 203-Y
Checked by G.V. B.N. No. 203-Y



KIRBY BARNES ADDITION
SANITARY SEWER
N.E. 43RD ST. SO. AND SENECA
CITY OF WICHITA, KANSAS
B. E. SMITH CITY ENGINEER
FEB. 1967. PRIVATE CONTRACT