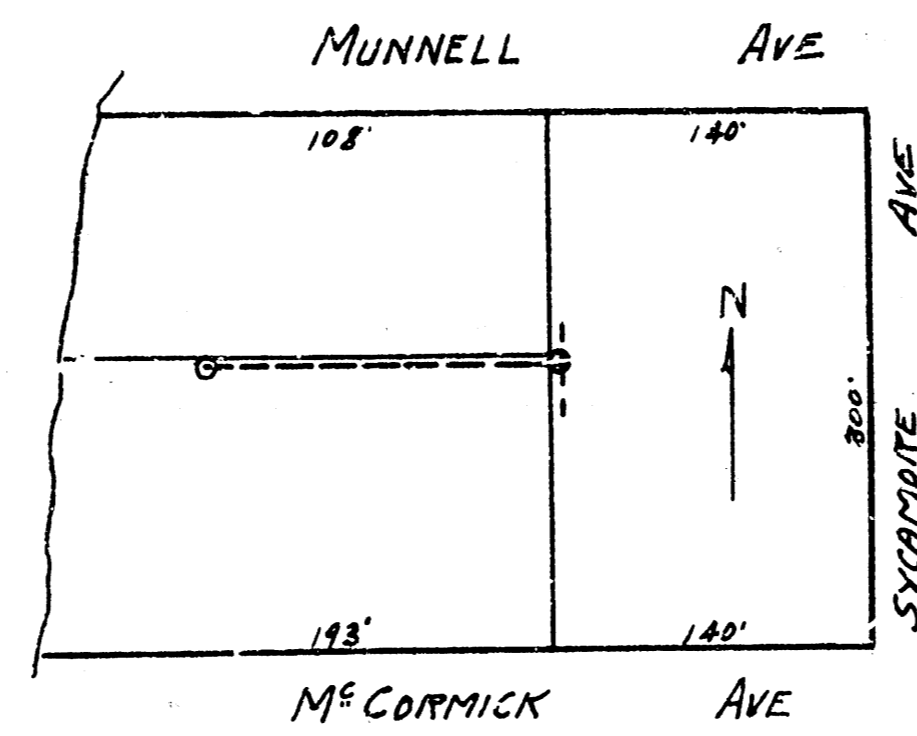
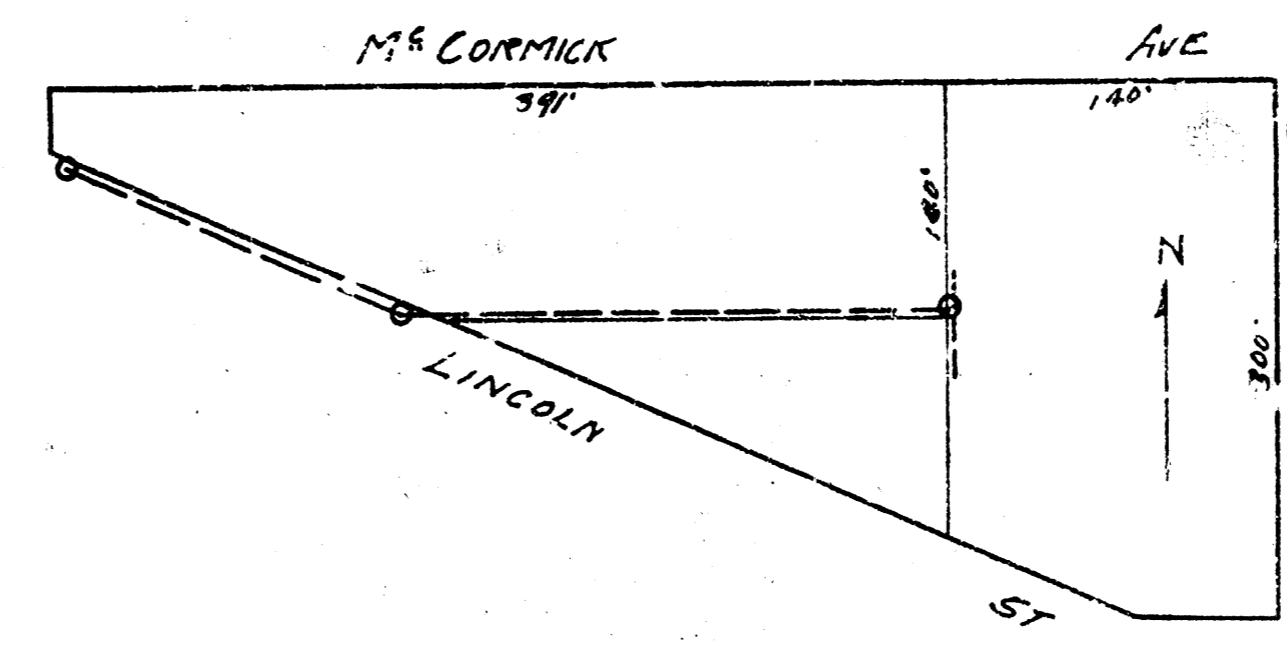


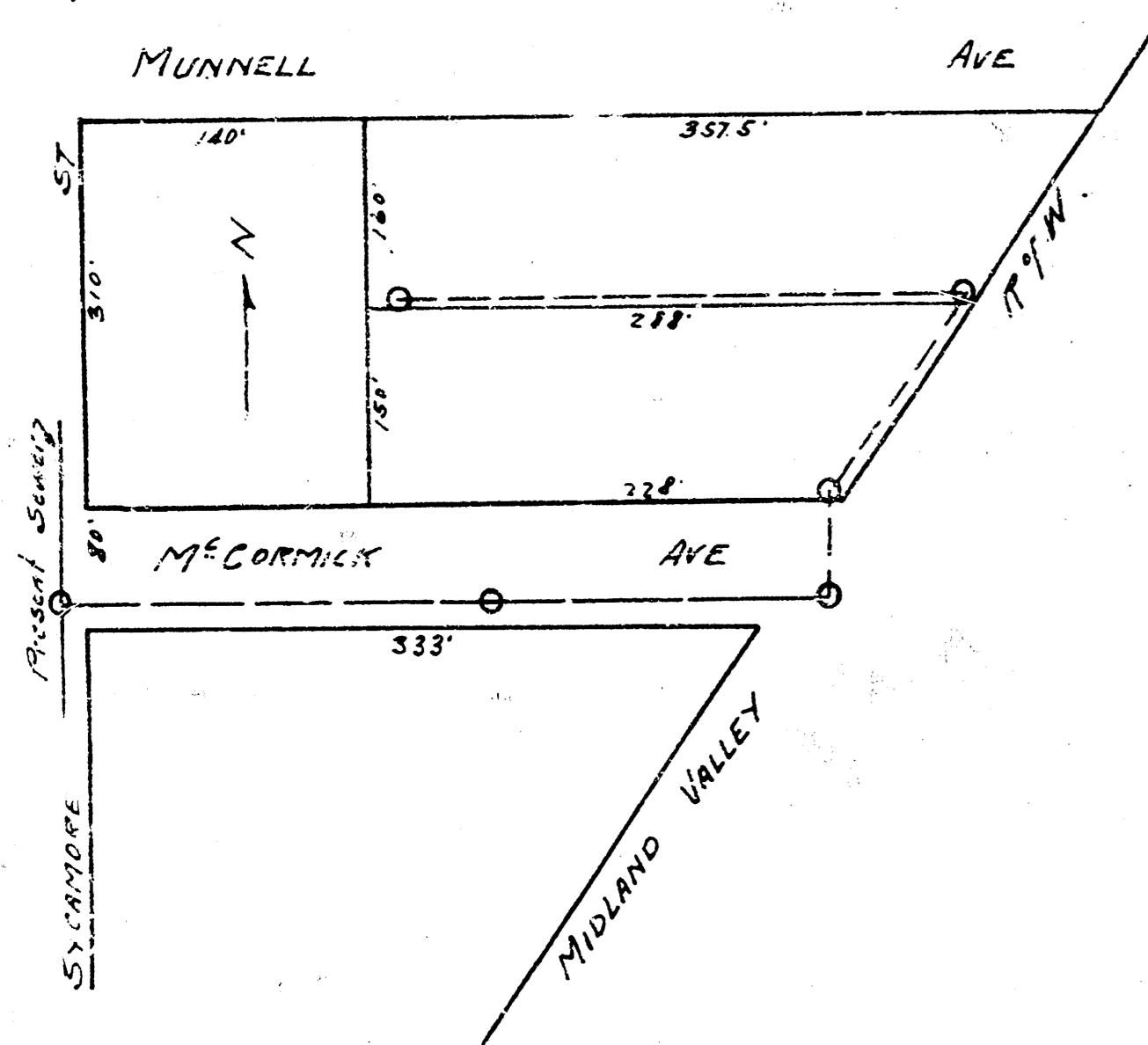
8' line 1 1/2% grade
LINE 1



8' line 1 1/2% grade
LINE 2

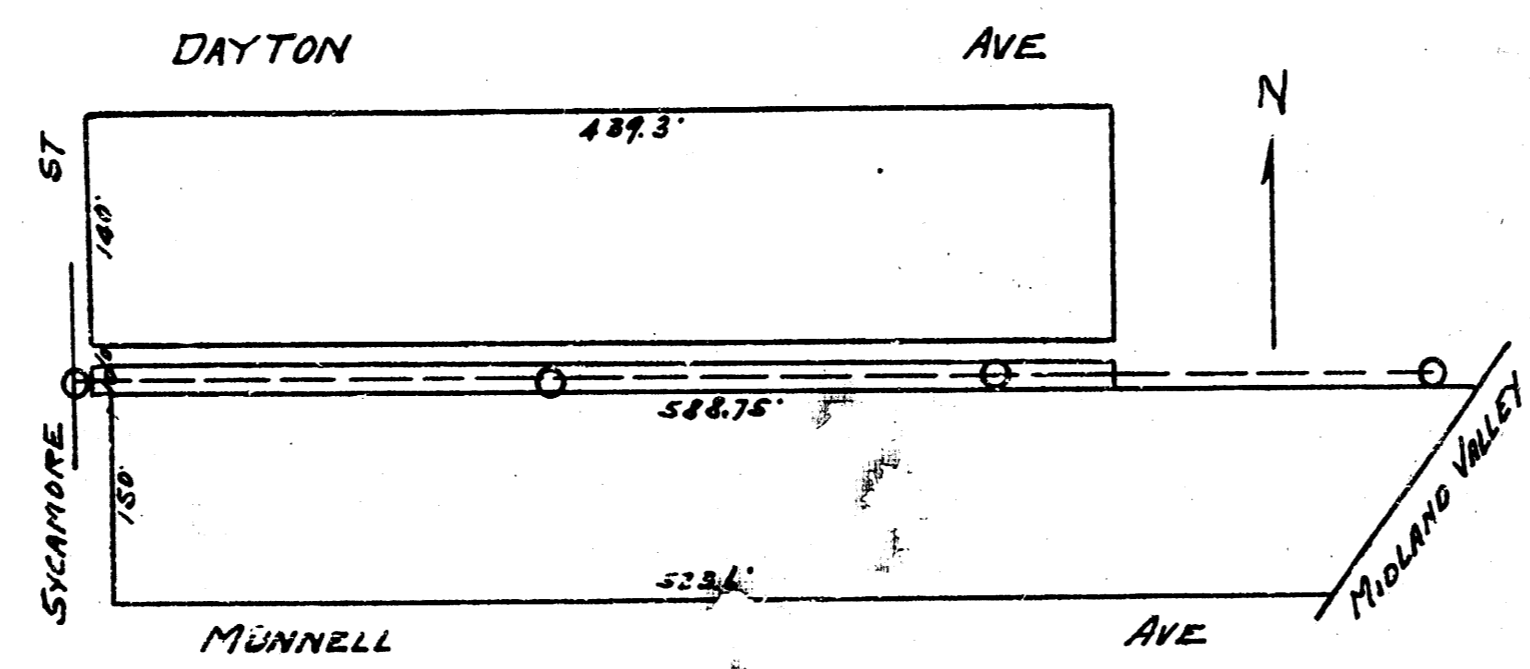


8' line 1 1/2% grade
LINE 3

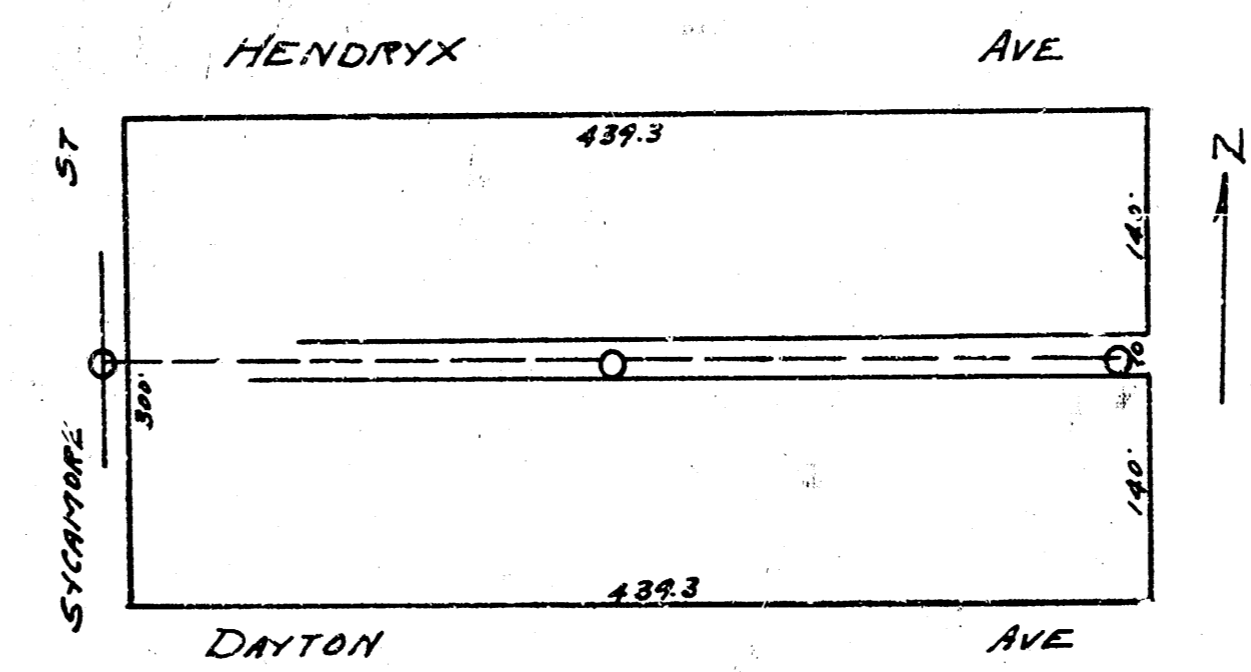


8' line 1 1/2% grade
LINE 4

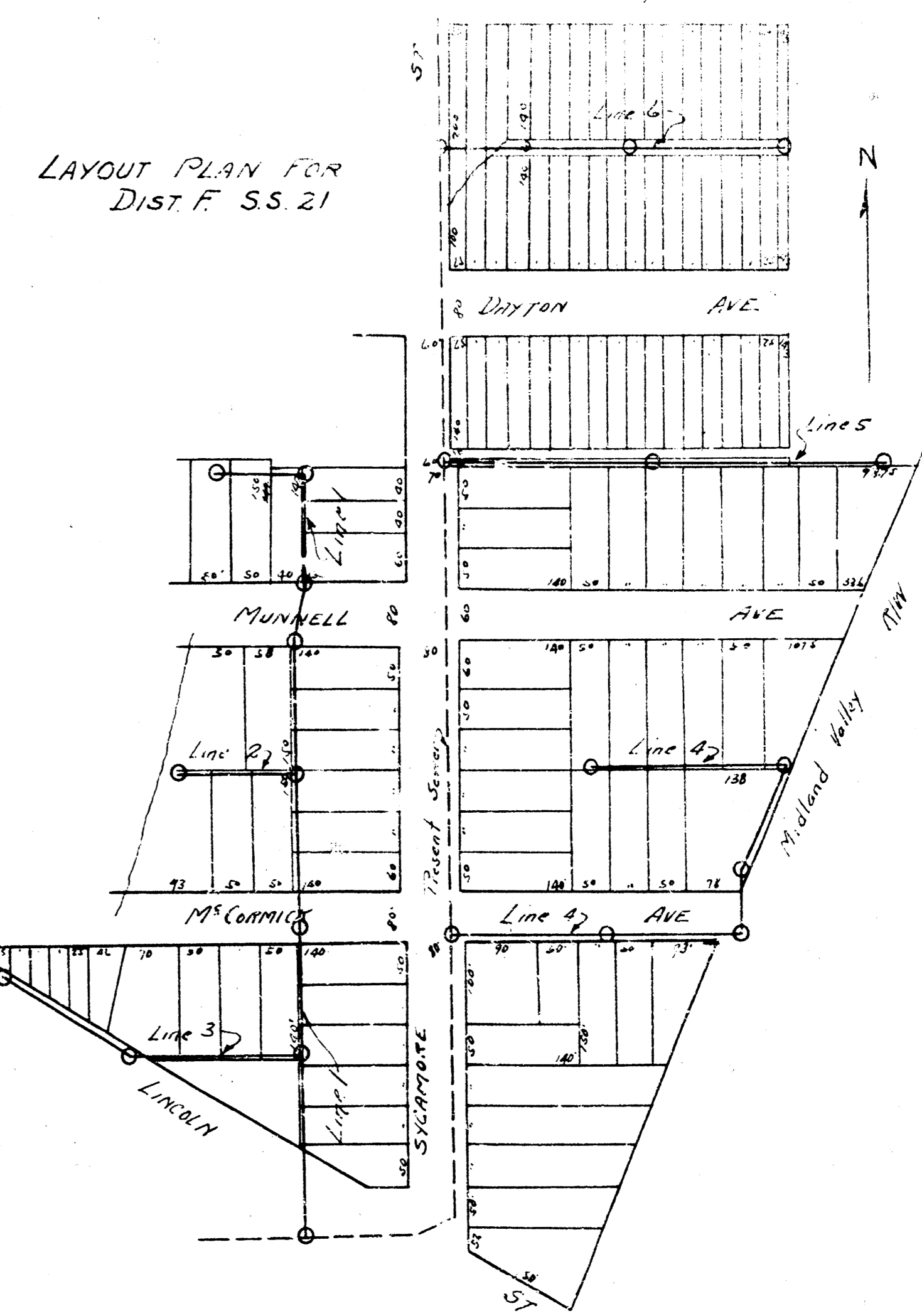
B.M. 16399 + on Cor. S. E. Sycamore & McCormick
B.M. 16373 - on E and 4th ally N of Munnell, E.S. Sycamore
B.M. 16357 + on just on ch. 13' E of log down west of
Sycamore S.S. of Munnell



8' line 1 1/2% grade
LINE 5



8' line 1 1/2% grade
LINE 6



DIST. F. S.S. No. 21.