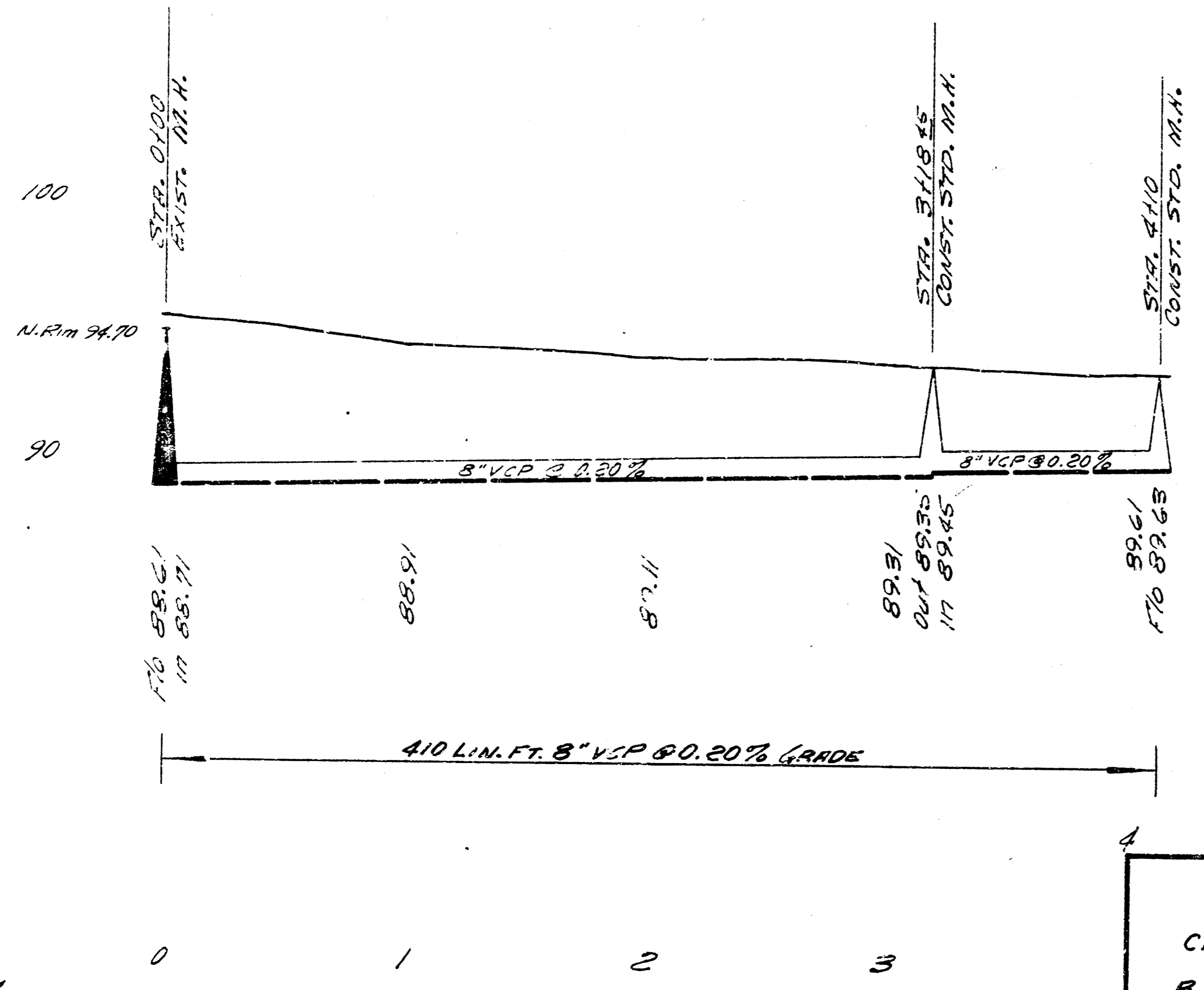
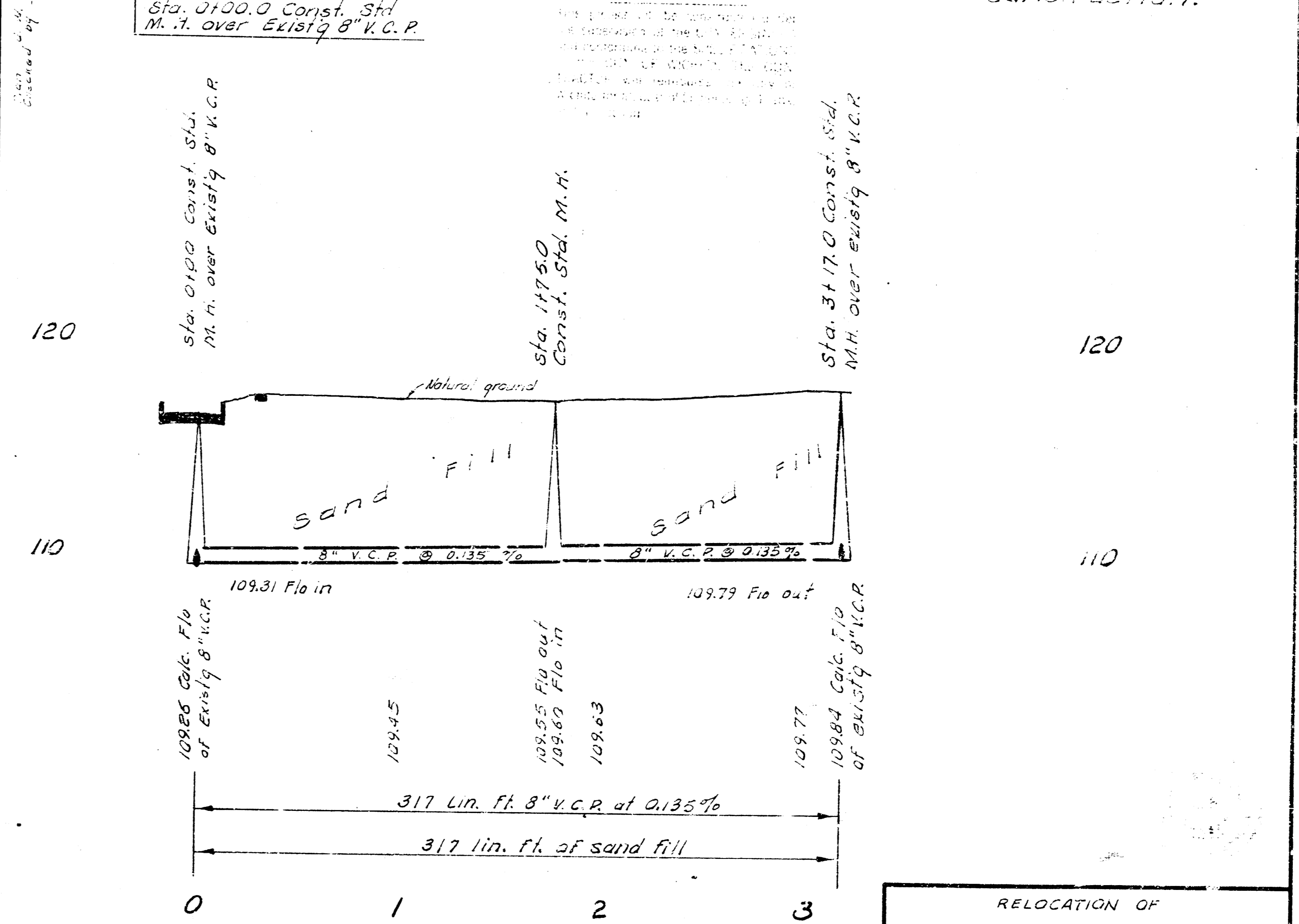
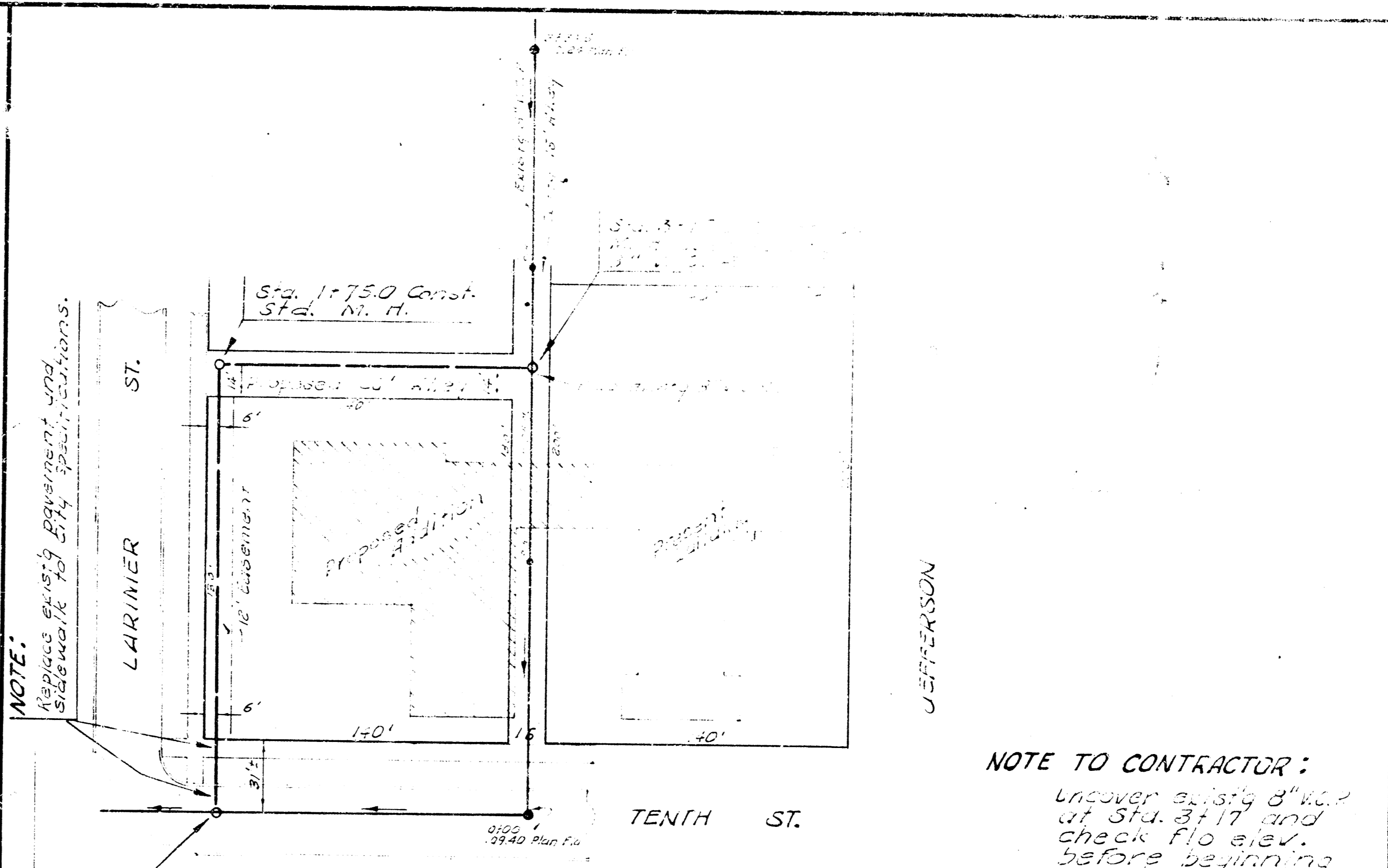


B.M. 46.68 S.E. Cor. Conc. Porch No. # 302 W. 30th
B.M. 27.47 S.E. Cor. Conc. Porch No. N.S. 30th & 4th Par. side 50.



LAT. 92, S.S. 22
CITY OF WICHITA, KANSAS
B. E. SMITH, CITY ENGINEER
PROJ. NO. C23-125 DATE JAN. 1964



NOTE TO CONTRACTOR:
Uncover existing 8" V.C.P. at Sta. 3+17 and check flow elev. before beginning construction.

RELOCATION OF
SANITARY SEWER NO. 15
CITY OF WICHITA, KANSAS
B. E. SMITH CITY ENGINEER
PRIVATE JOB FEB. 1964