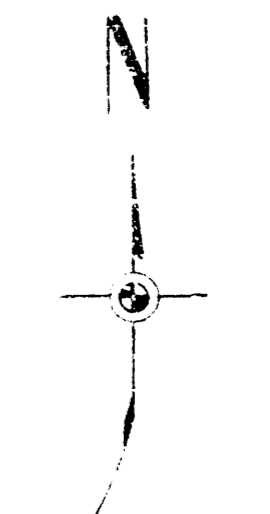
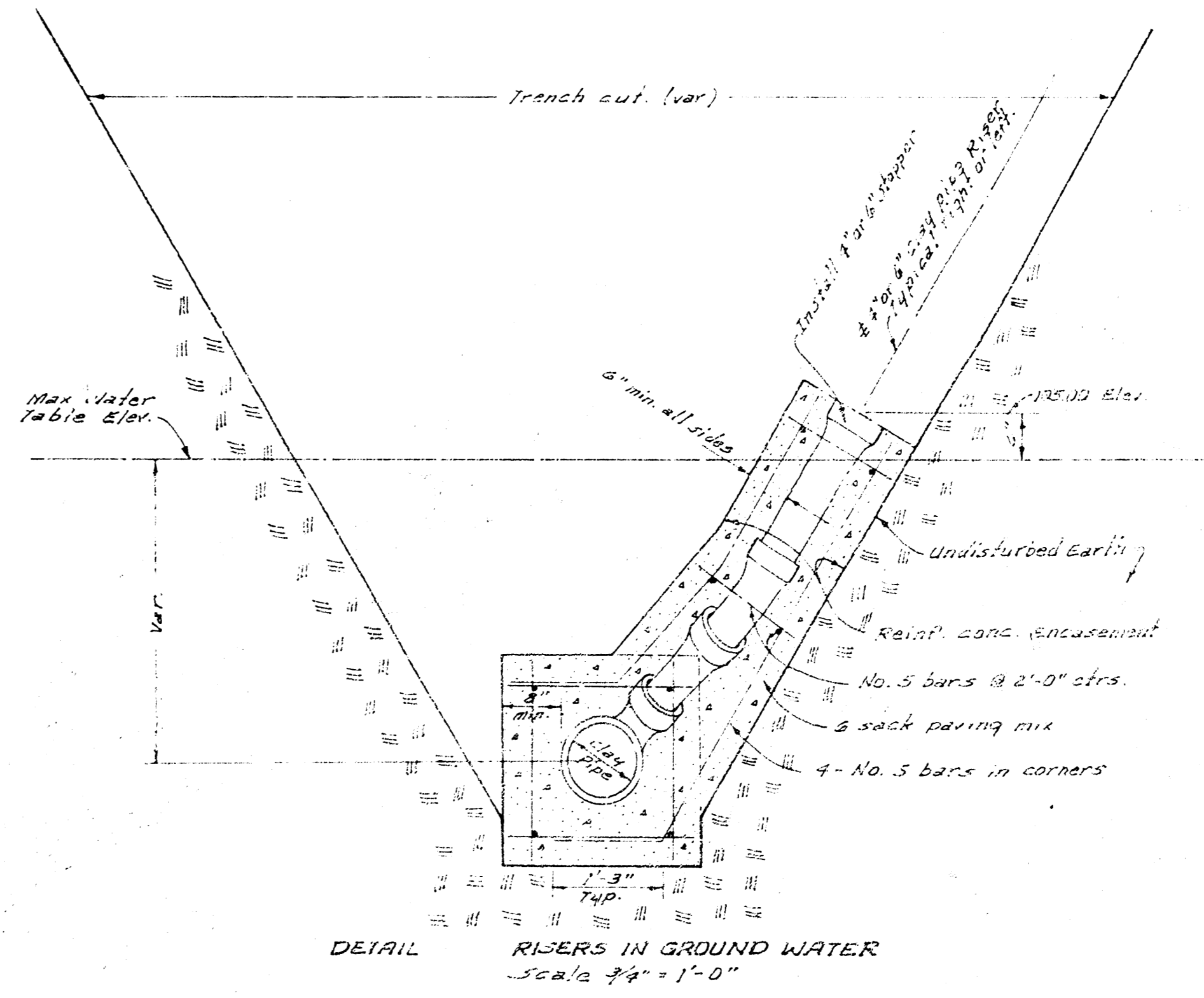
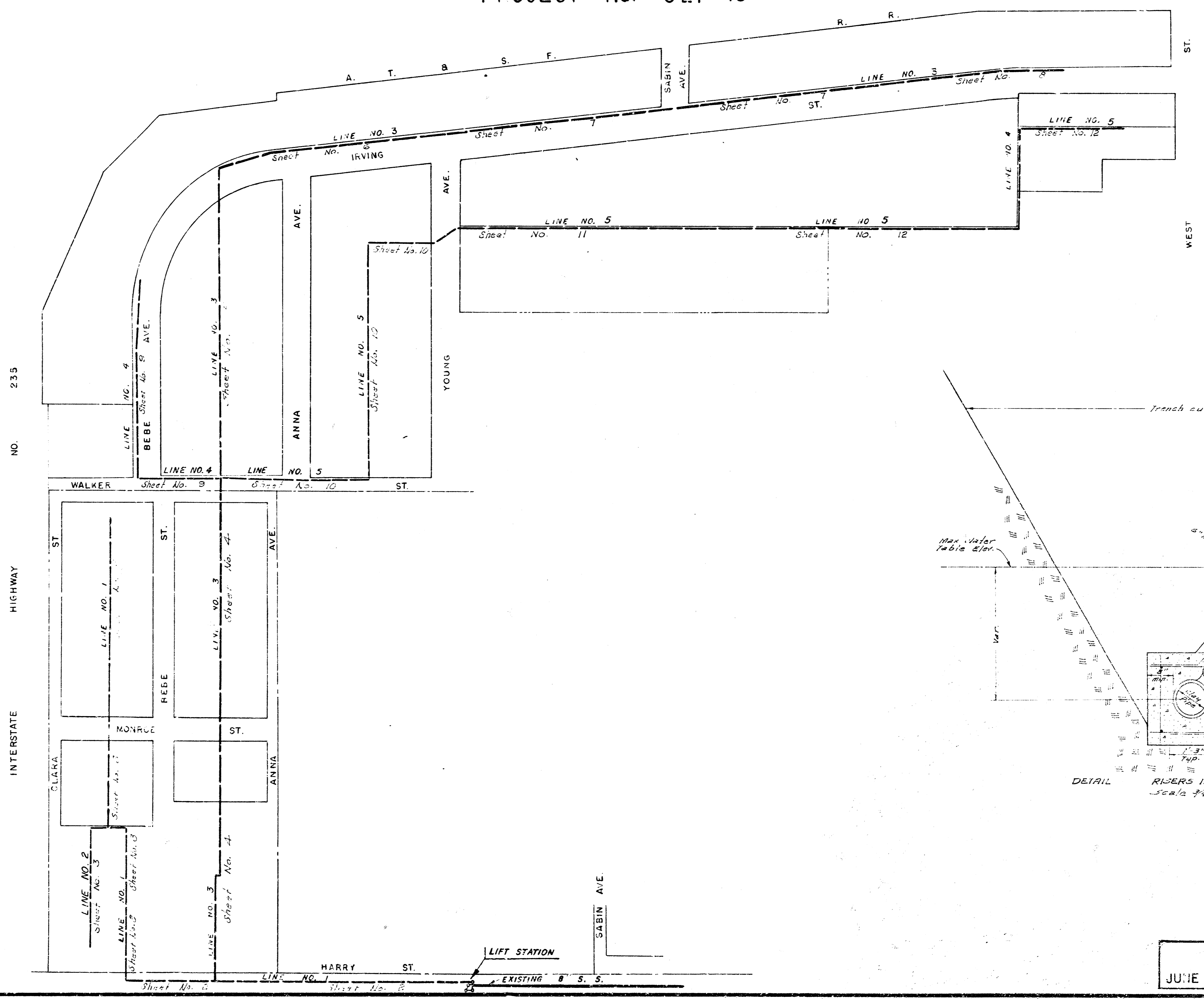


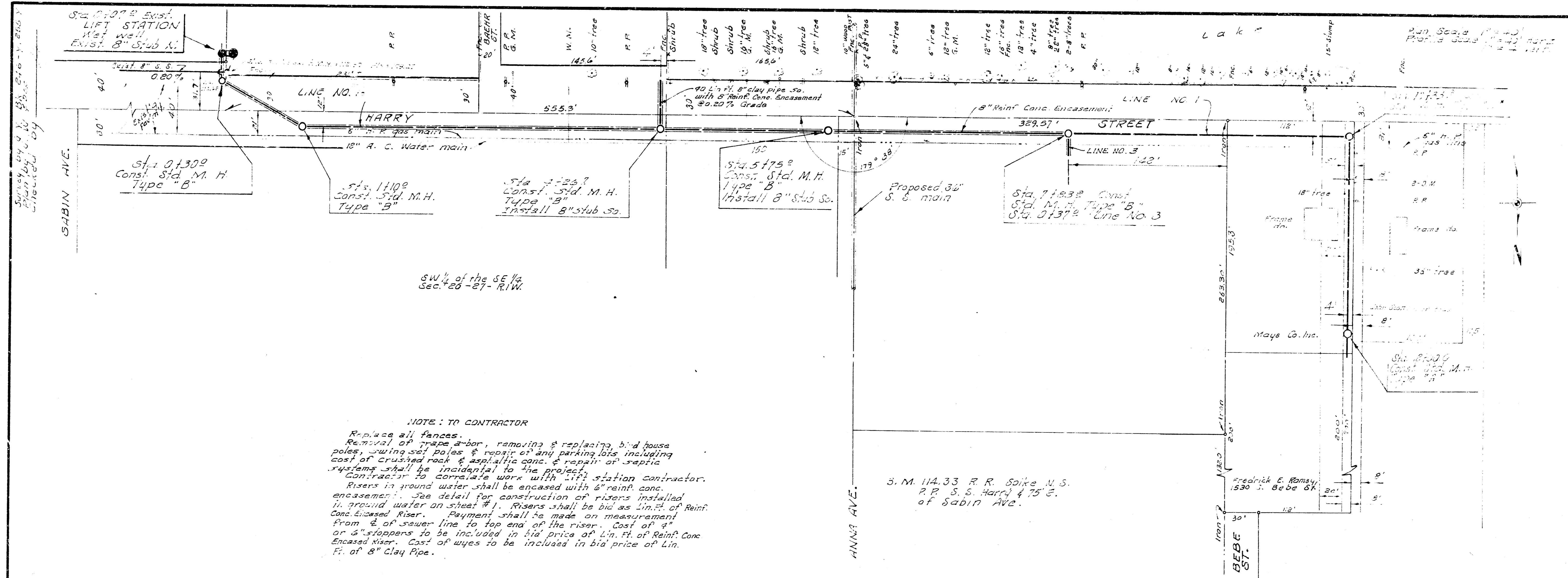
PLAN AND PROFILE FOR
LAT. 99, SANITARY SEWER NO. 22
 CITY OF WICHITA, KANSAS
 B. E. SMITH — CITY ENGINEER
 PROJECT NO. C27-43



SCALE 1" = 150'

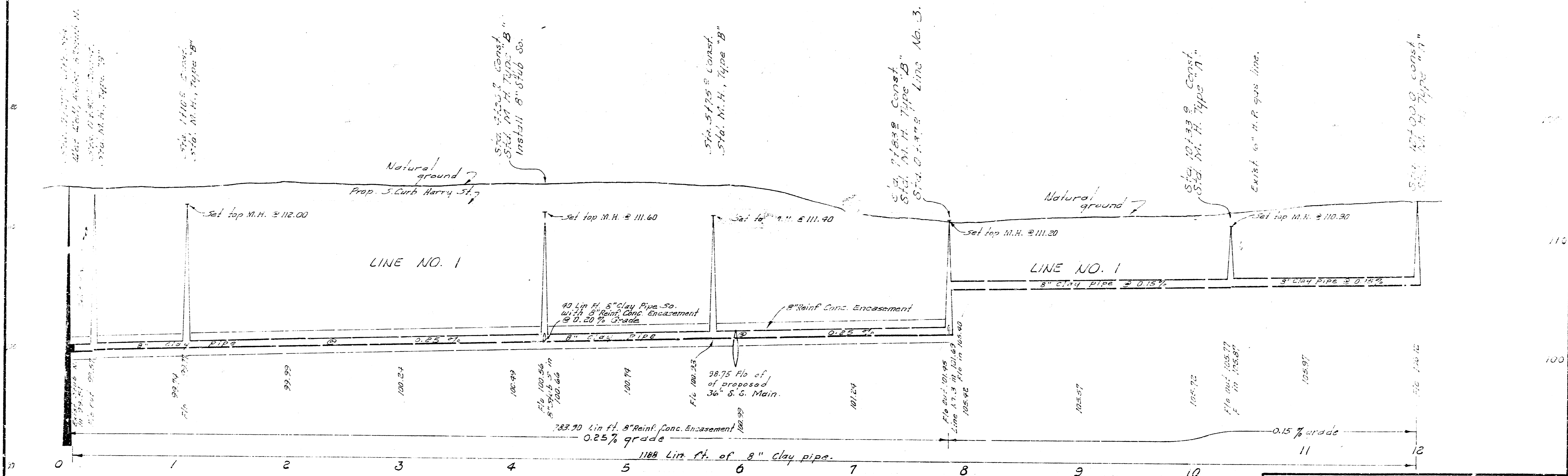


LAT. 99, S. S. NO. 22
 JUNE 1970, PROJECT NO. C27-43

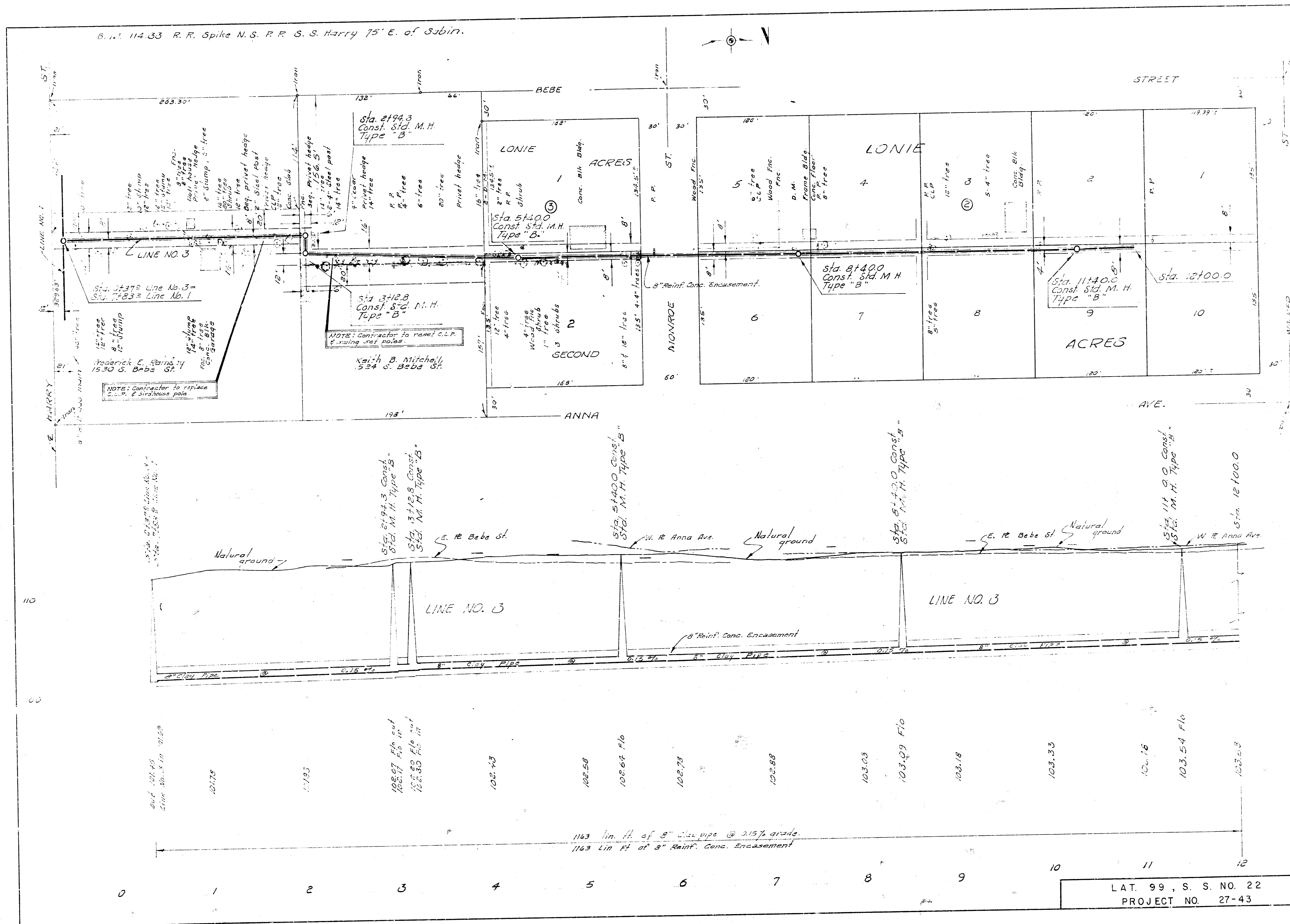


NOTE: TO CONTRACTOR

Replace all fences.
 Removal of traps & bor, removing & replacing bird house poles, pouring soil poles & repair of any parking lots including cost of crushed rock & asphaltic conc. & repair of septic systems shall be incidental to the project.
 Contractor to complete work with lift station contractor.
 Risers in ground water shall be encased with 8" reinf. conc. encasement. See detail for construction of risers installed in ground water on sheet #1. Risers shall be bid as Lin. Ft. of Reinf. Conc. Encased Riser. Payment shall be made on measurement from 2' of sewer line to top end of the riser. Cost of 4" or 6" stoppers to be included in the price of Lin. Ft. of Reinf. Conc. Encased riser. Cost of wyes to be included in bid price of Lin. Ft. of 8" Clay Pipe.



B. 114.33 R. R. Spike N. S. P. P. S. S. Harry 75' E. of Sablin.



NOTE: Contractor to replace C.L.P. & swing set poles.

NOTE: Contractor to reset C.L.P. & swing set poles.

NOTE: Change from 16" to 12" pipe at Sta. 11400.0.

Sta. 2194.3 Const. Std. M.H. Type "B"

Sta. 3142.8 Const. Std. M.H. Type "B"

Sta. 5140.0 Const. Std. M.H. Type "B"

Sta. 8140.0 Const. Std. M.H. Type "B"

Sta. 11400.0 Const. Std. M.H. Type "B"

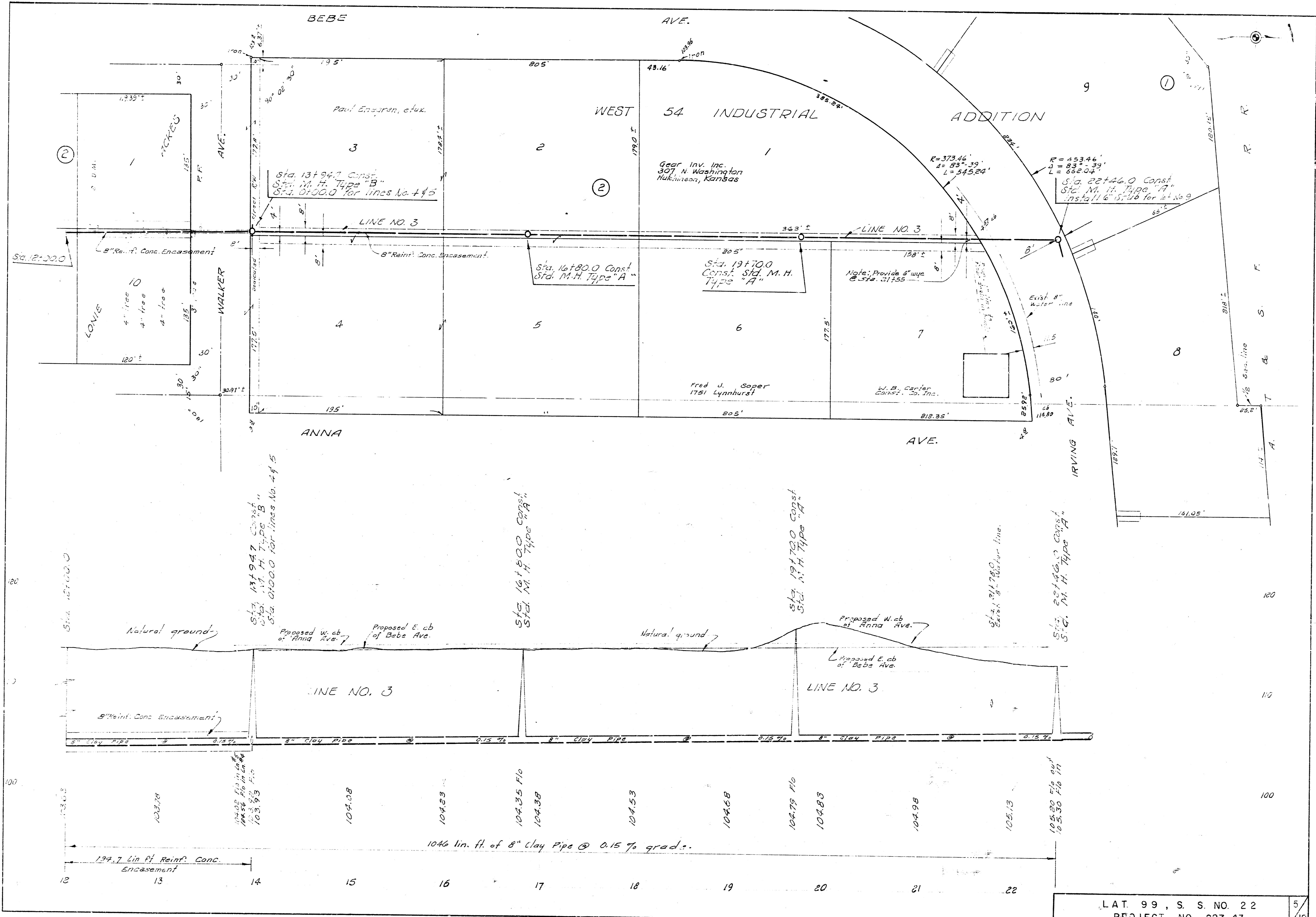
Sta. 12100.0 Const. Std. M.H. Type "B"

102.43
102.58
102.64 F10
102.73
102.88
103.03
103.09 F10
103.18
103.33
103.48
103.54 F10
103.63

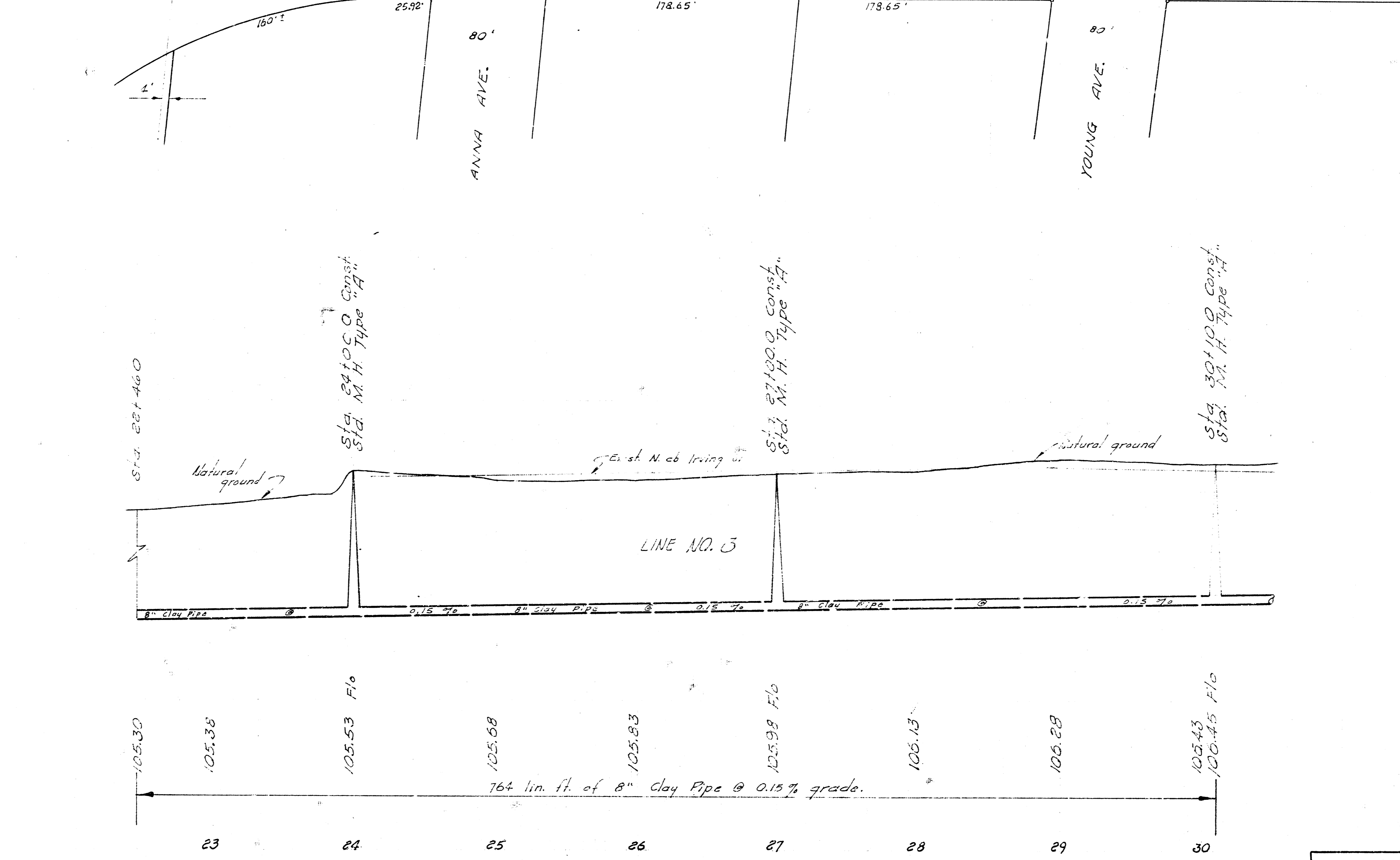
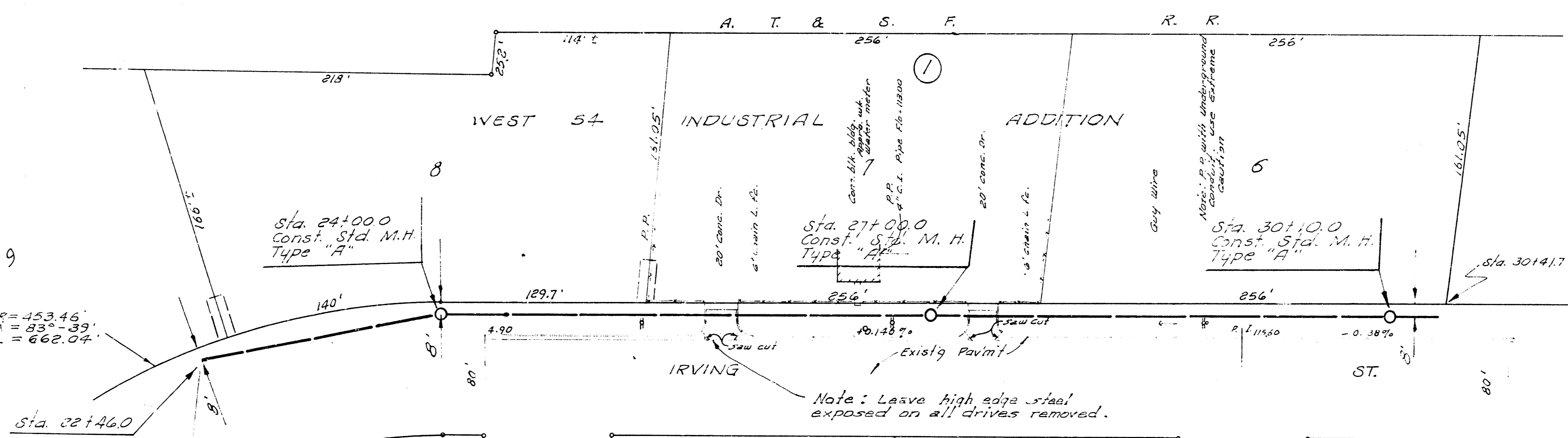
1143 Lin. Ft. of 8" Dia. pipe @ 2.15% grade.
1163 Lin. Ft. of 8" Reinf. Conc. Encasement

LAT. 99, S. S. NO. 22
PROJECT NO. 27-43

4/12



3.11. 11.69 "A" 20' rock conc. w/ 3' of
 pole 200' E. of Young
 St. 275
 S.





B. M. 11759 3" cut back conc. w/ 1" x 1" Metal Flag Pole in front of Drage's Equipment Bldg. - 200' E. of Young St. on S. S. Irving St.

Note: Leave high edge steel exposed on all drives removed.

790 lin. ft. of 8" clay pipe at 0.15% grade.

