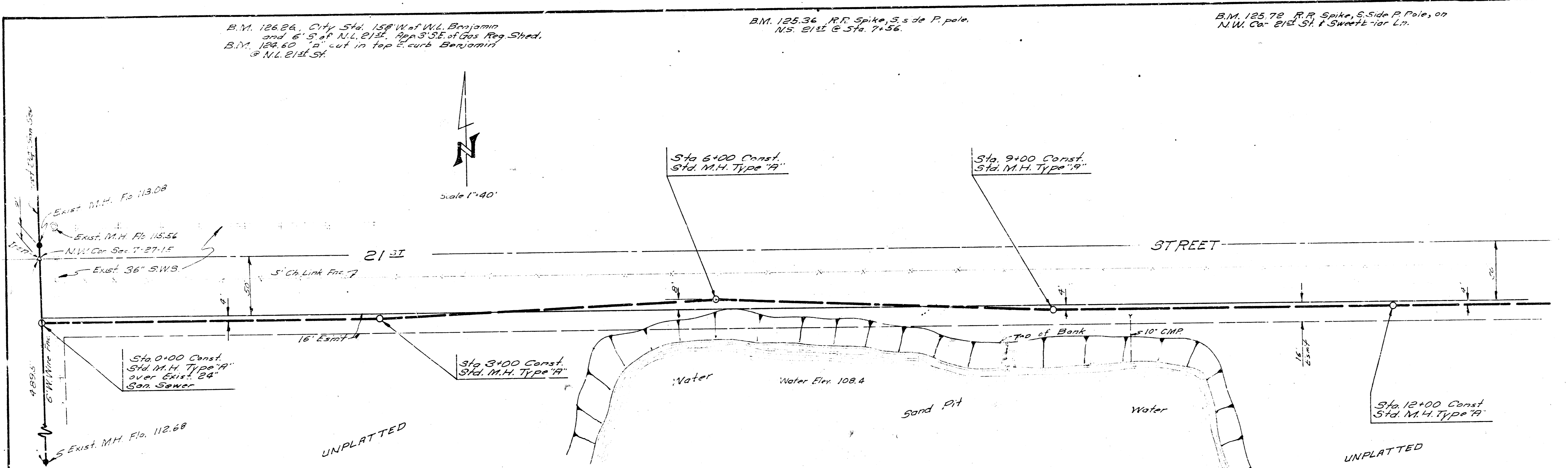
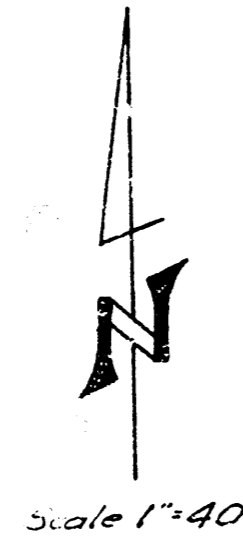


Plat No. 116.140
P.C. 17.000

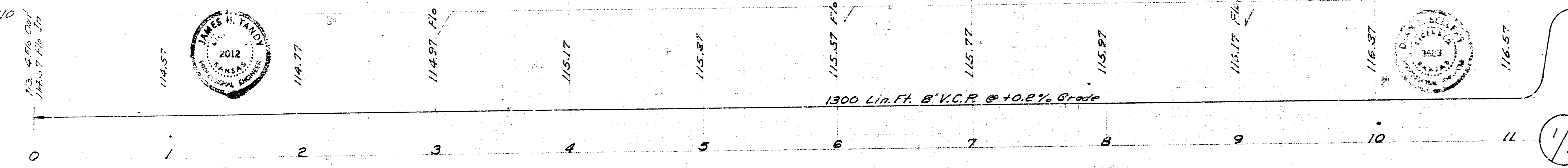
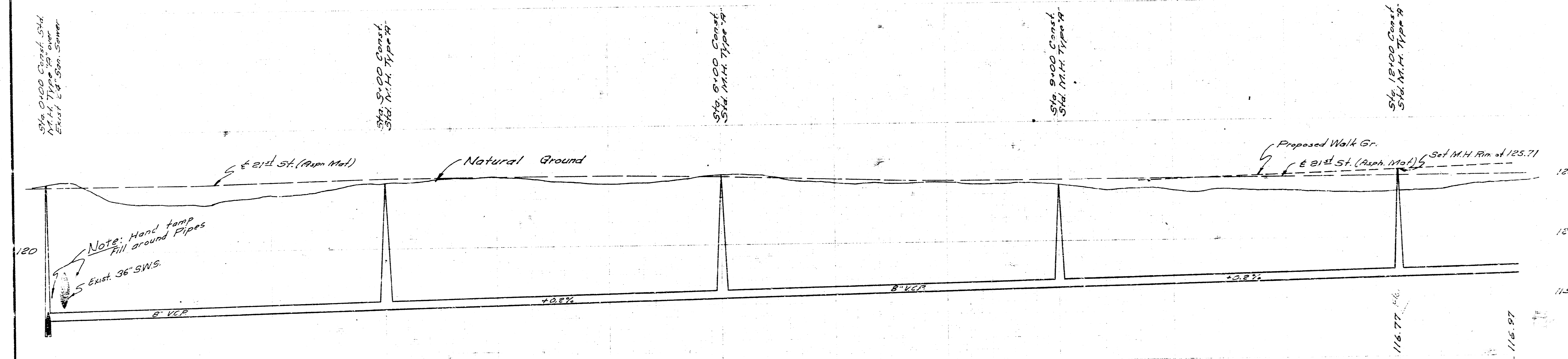
B.M. 126.26, City Std. 15th W. of W.L. Benjamin
and 6' S. of N.L. 21st St. App. 3' SE. of Gas Reg. Shed.
B.M. 124.60 "a" cut in top E. curb Benjamin
3' N.L. 21st St.

B.M. 125.36 R.R. Spike S. side P. pole,
N. 5' East 6' Sta. 7+56.

B.M. 125.72 R.R. Spike, S. Side P. Pole, on
N.W. Cor. 21st St. 1' Sweet's prior Lr.



Note:
Replace all fence Removed



LAT. 101, SS. 22
CITY OF WICHITA, KANSAS
B.E. SMITH, CITY ENGINEER
PROJ. NO. C 27-49 DATE

1/2

