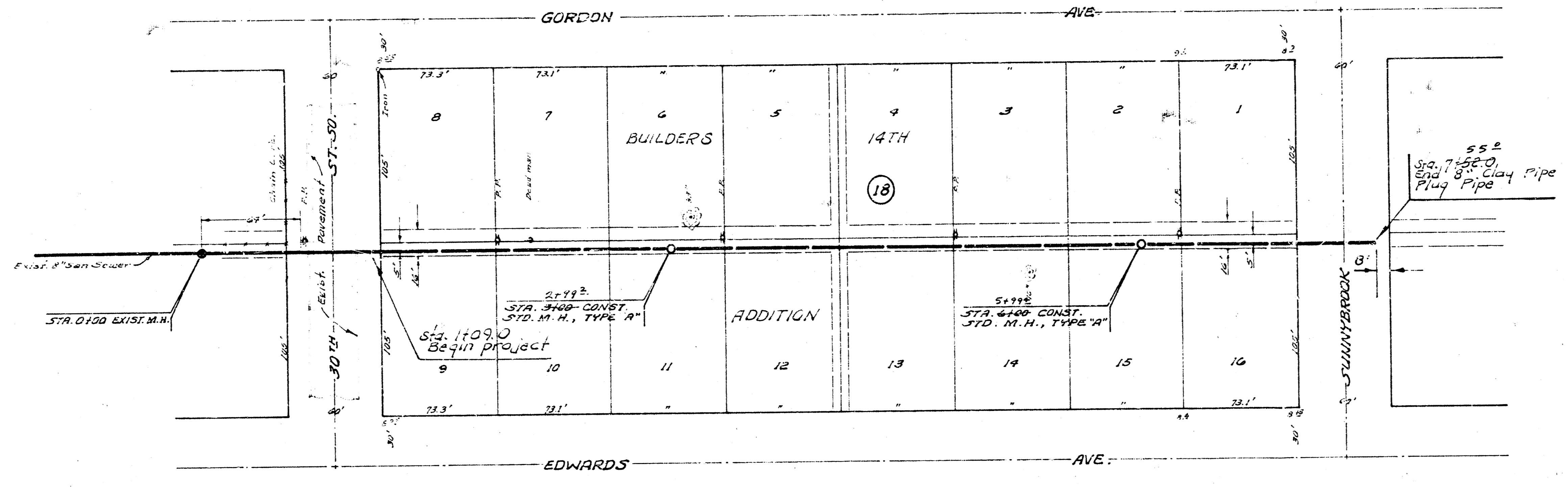
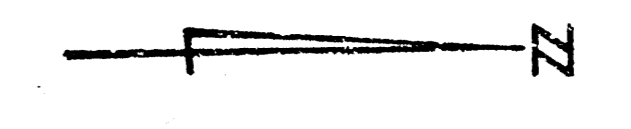
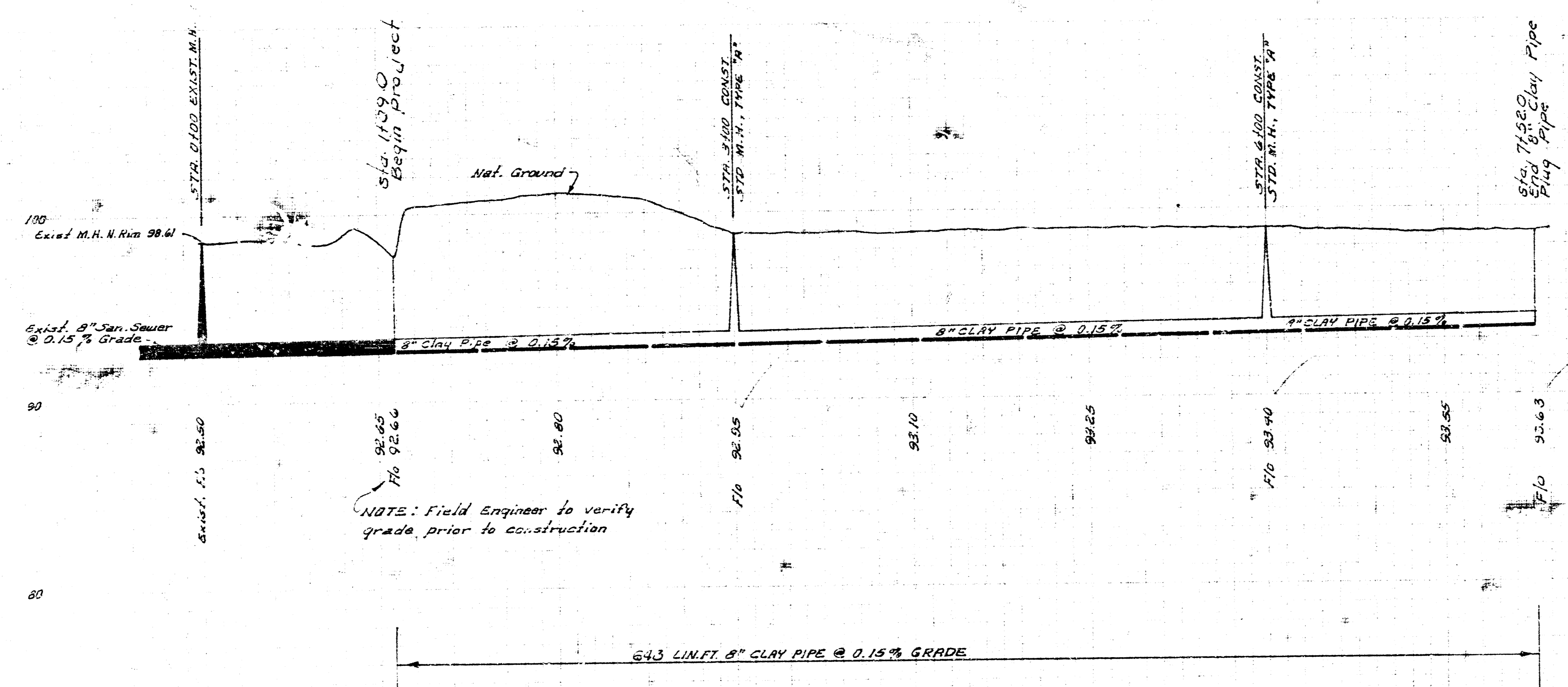


Approved: *[Signature]*  
 D. Grammer

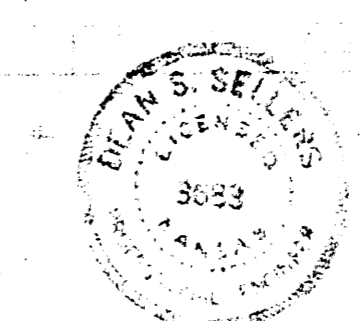
B.M. 98.40 1/4" E. End S.E. Curb Return S.E. Cor. 30th & Gordon  
 B.M. 102.87 N.E. Cor. 1st Step on back porch of Ho. S.E. Cor. Wildwood & St. Paul



Plan Scale 1"=40'  
 Profile Scale 1"=4' Hor.  
 1"=4' Vert.



NOTE: Field Engineer to verify grade prior to construction



As Built East Side 55'13.00  
 LAT. 109, SAN-SEWER 22  
 CITY OF WICHITA, KANSAS  
 R. W. LINN, CITY ENGINEER  
 PROJ. NO. DBKL568009  
 DATE: NOV. 1973