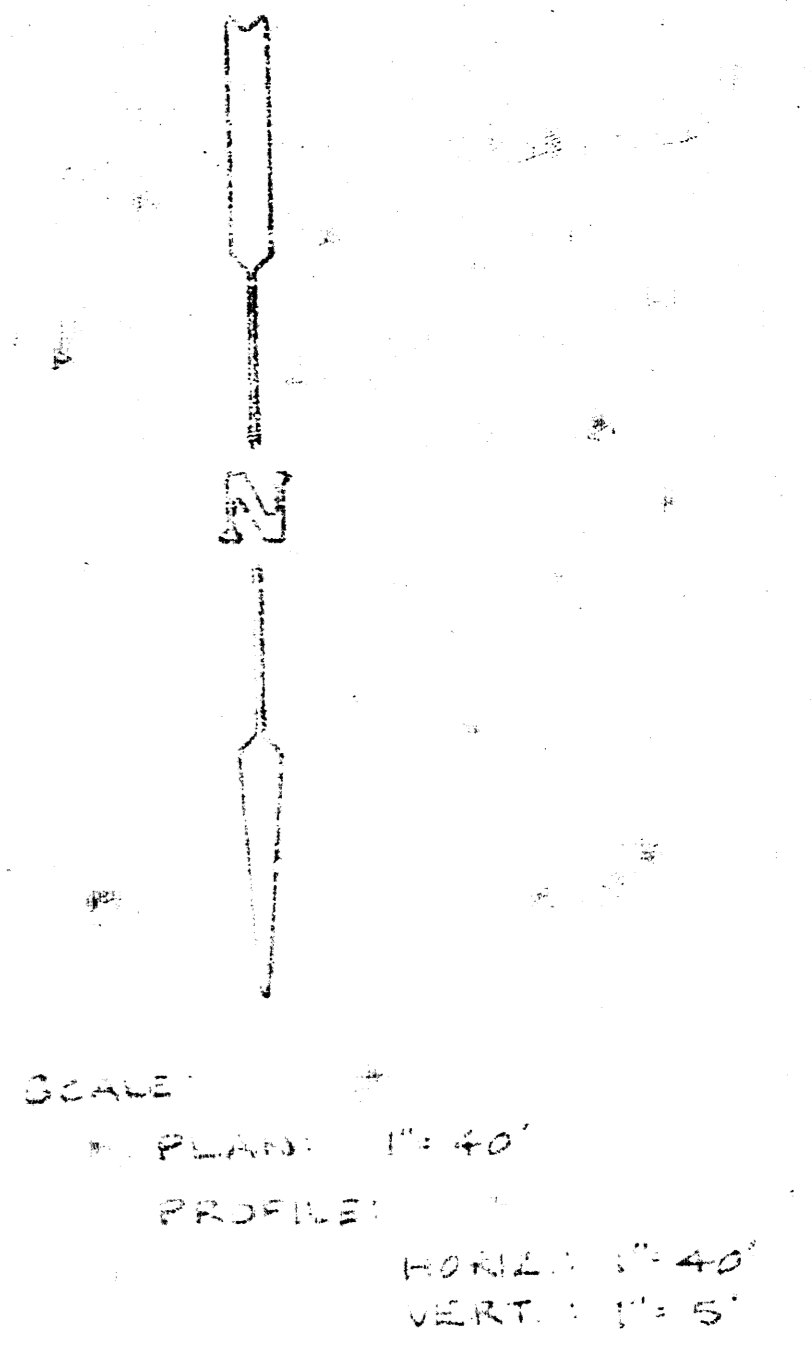
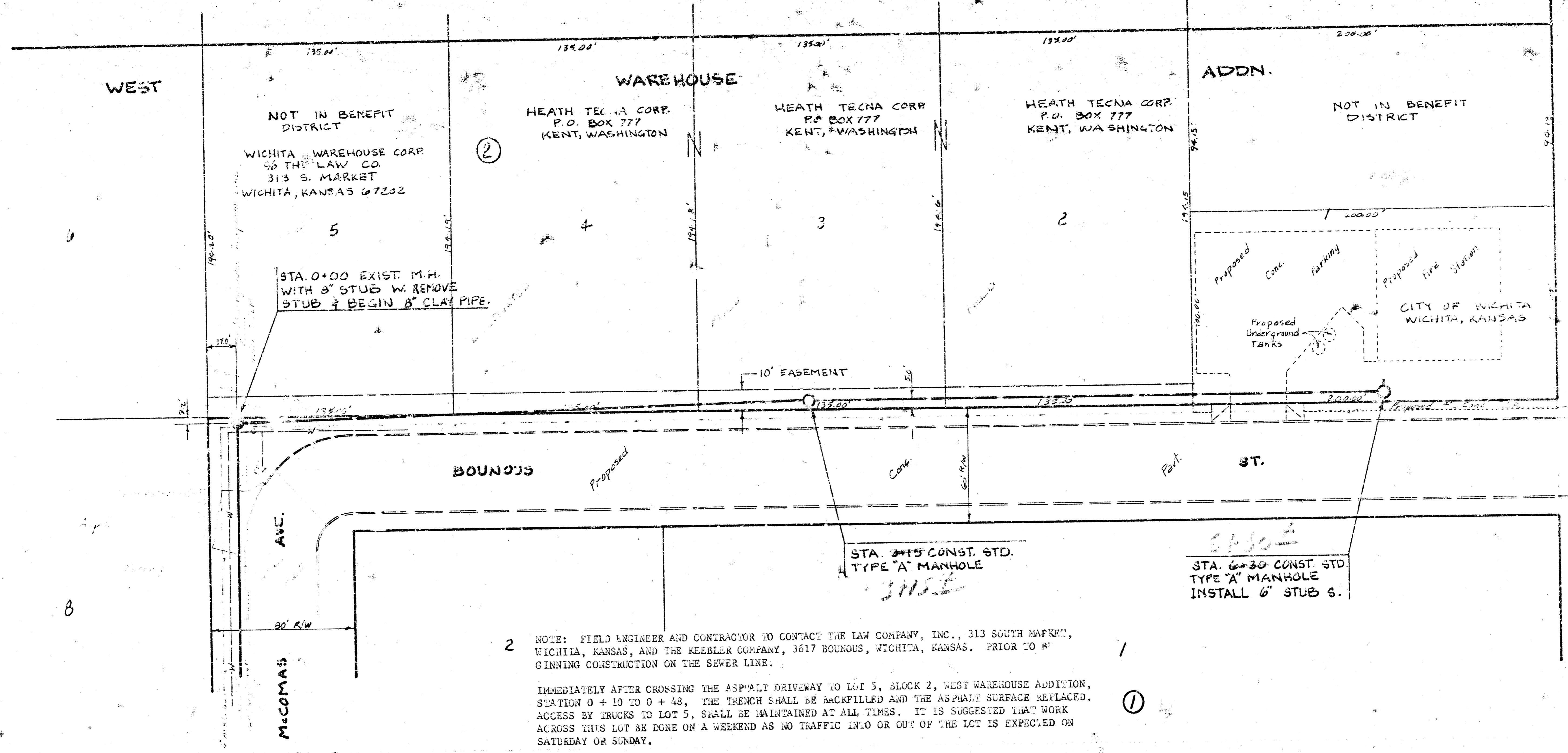
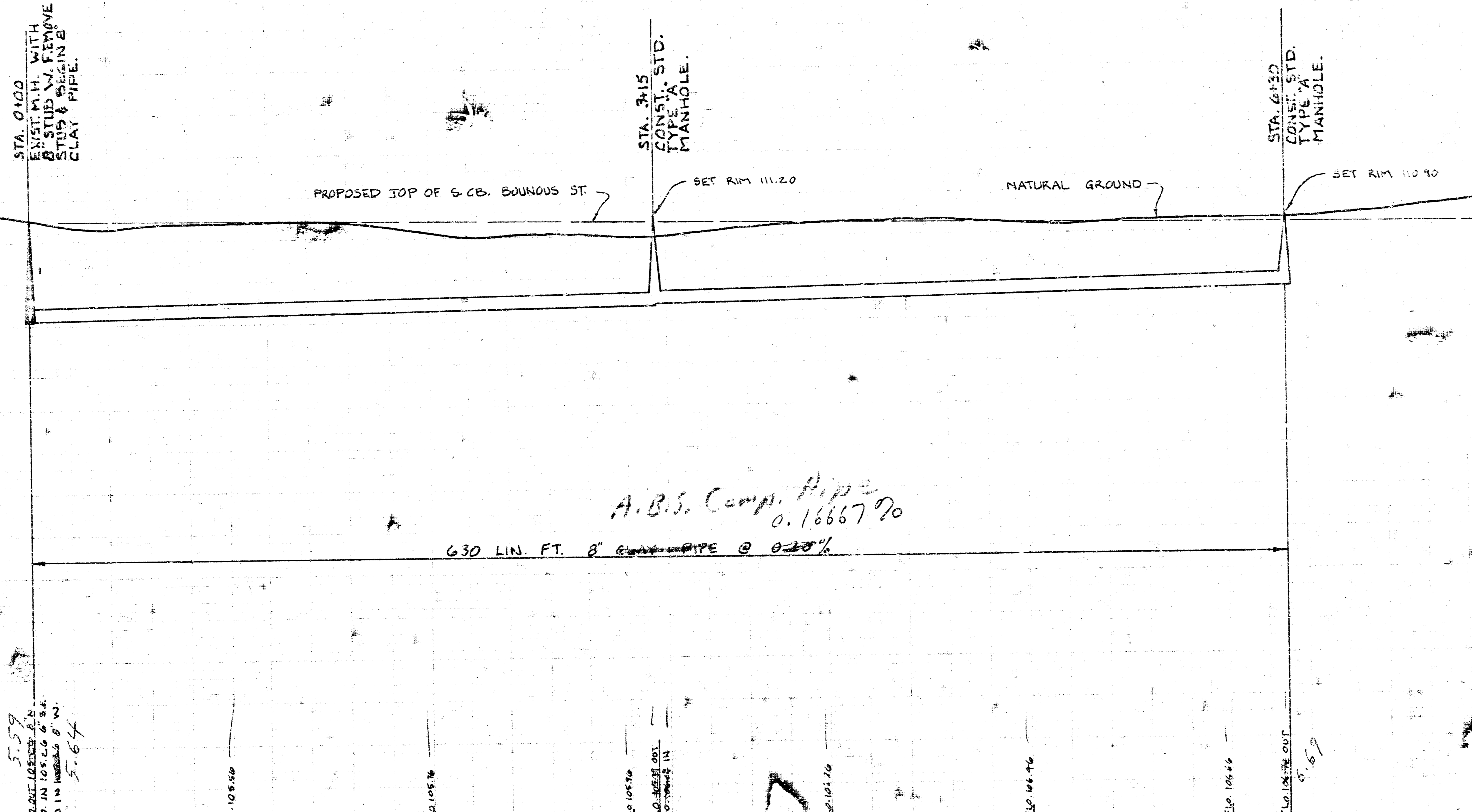


B.M. = 11149 - R.R. SPIKE IN N.E. SIDE OF P. POLE @ S.W. CORNER OF McCOMAS & HARRY ST.
 B.M. = 11248 - CHISEL MARK IN N.E. CORNER OF CONC. SIDEWALK @ S. ENTRANCE TO PLASTIC FAB CO., 1650 McCOMAS AVE.
 B.M. = 11245 - R.R. SPIKE IN N. SIDE OF P. POLE APPROX. 40' S. & 35' W. OF E. BOTH WEST & BOUNOUS.



NOTE: FIELD ENGINEER AND CONTRACTOR TO CONTACT THE LAW COMPANY, INC., 313 SOUTH MARKET, WICHITA, KANSAS, AND THE KEBBLER COMPANY, 3617 BOUNOUS, WICHITA, KANSAS. PRIOR TO BEGINNING CONSTRUCTION ON THE SEWER LINE.

IMMEDIATELY AFTER CROSSING THE ASPHALT DRIVEWAY TO LOT 5, BLOCK 2, WEST WAREHOUSE ADDITION, STATION 0 + 10 TO 0 + 48, THE TRENCH SHALL BE BACKFILLED AND THE ASPHALT SURFACE REPLACED. ACCESS BY TRUCKS TO LOT 5, SHALL BE MAINTAINED AT ALL TIMES. IT IS SUGGESTED THAT WORK ACROSS THIS LOT BE DONE ON A WEEKEND AS NO TRAFFIC IN/O OR OUT OF THE LOT IS EXPECTED ON SATURDAY OR SUNDAY.



As built 5-17-78

LAT 137 15.S.22
 CITY OF WICHITA, KANSAS
 R.W. LINN CITY ENGINEER
 DATE: _____ PROJECT NUMBER: DBKL571068