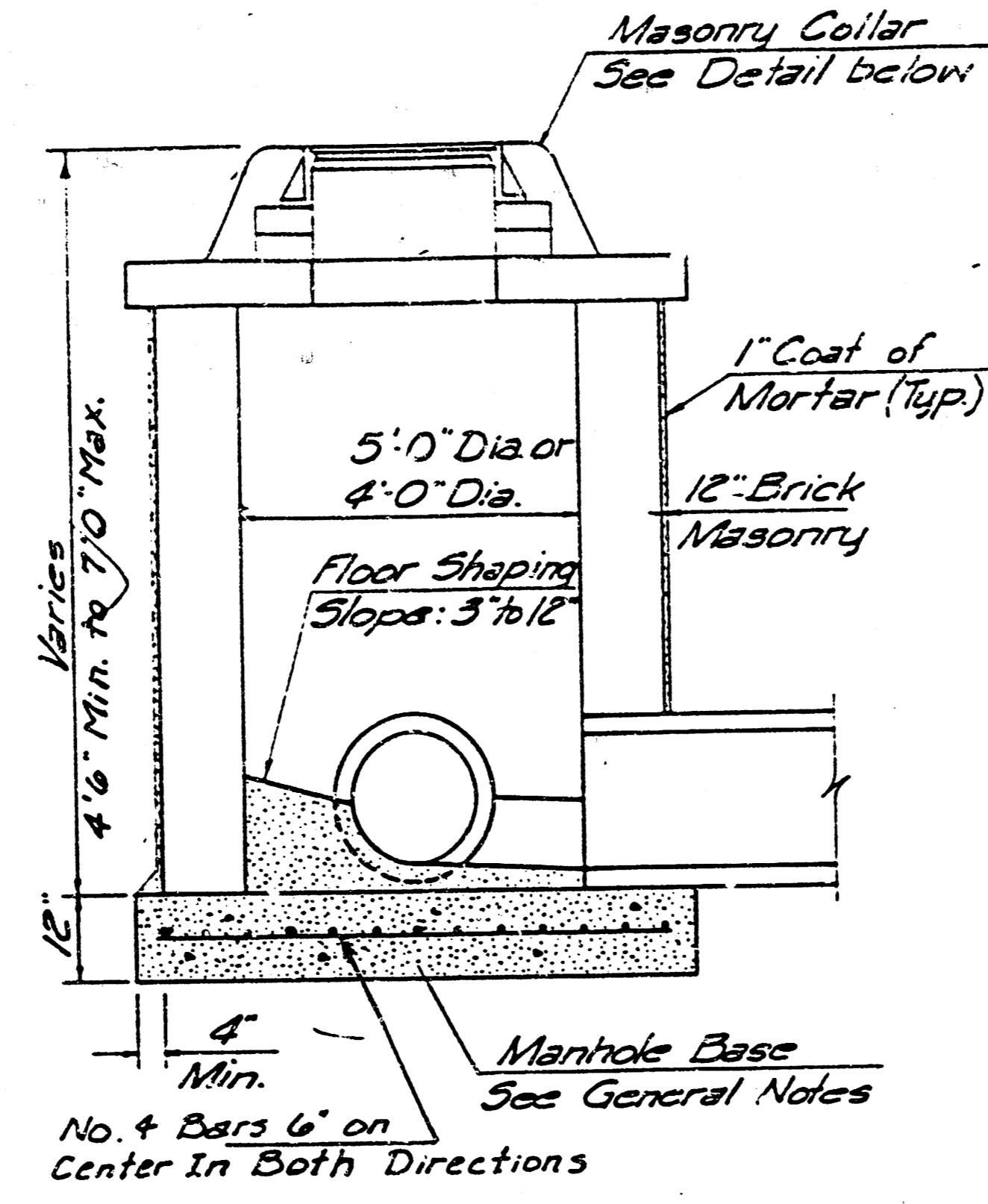
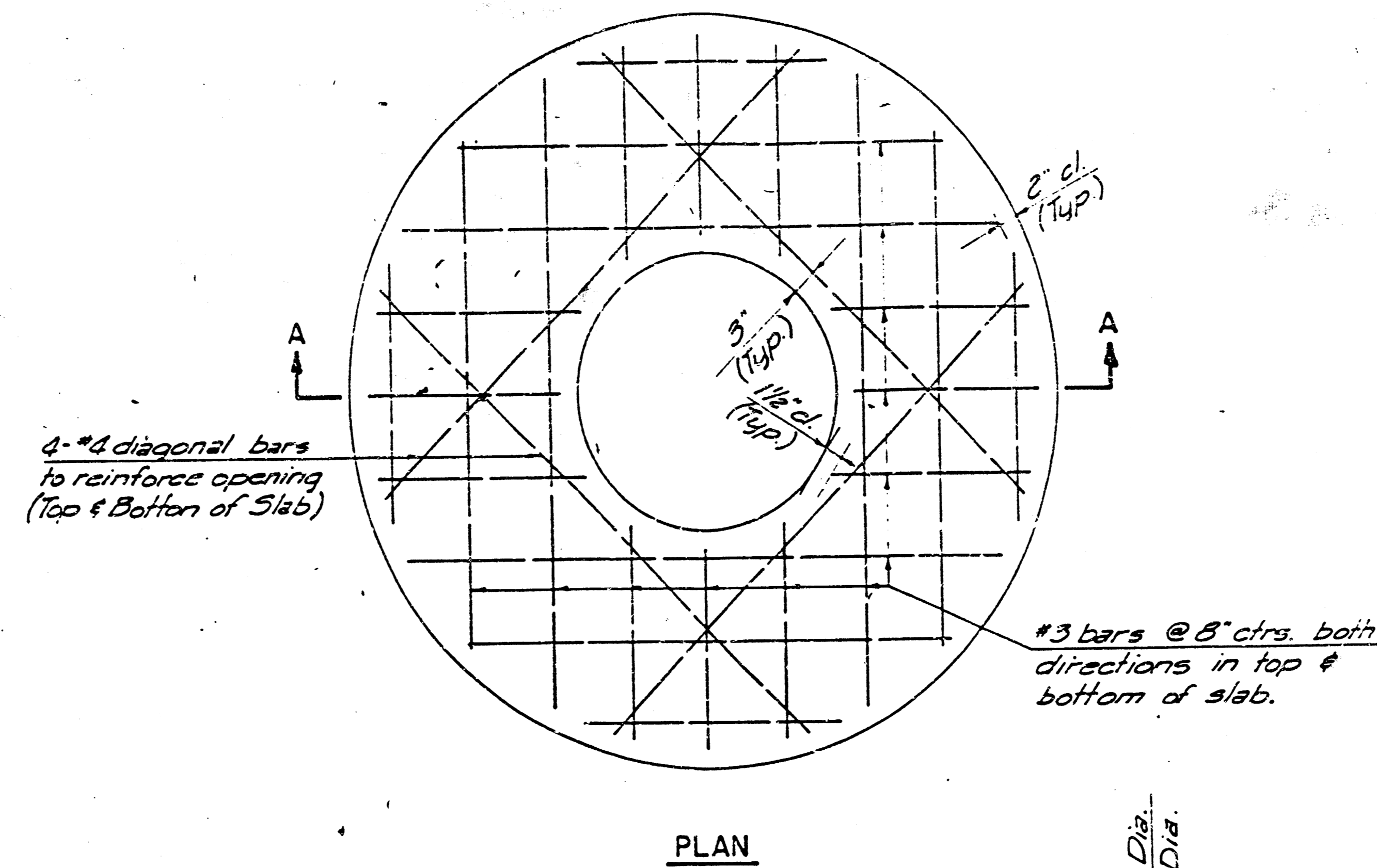


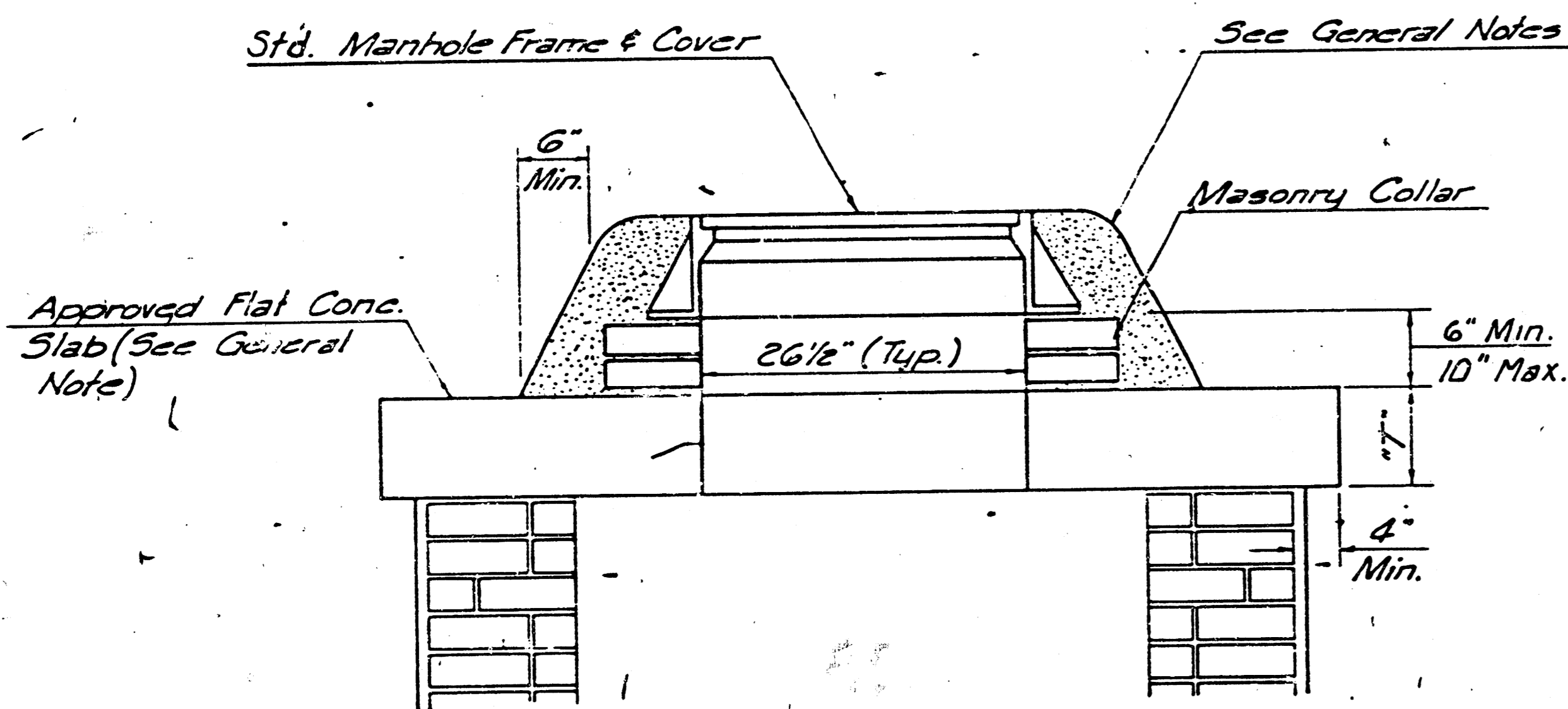
**SHALLOW TYPE "A" MANHOLE**



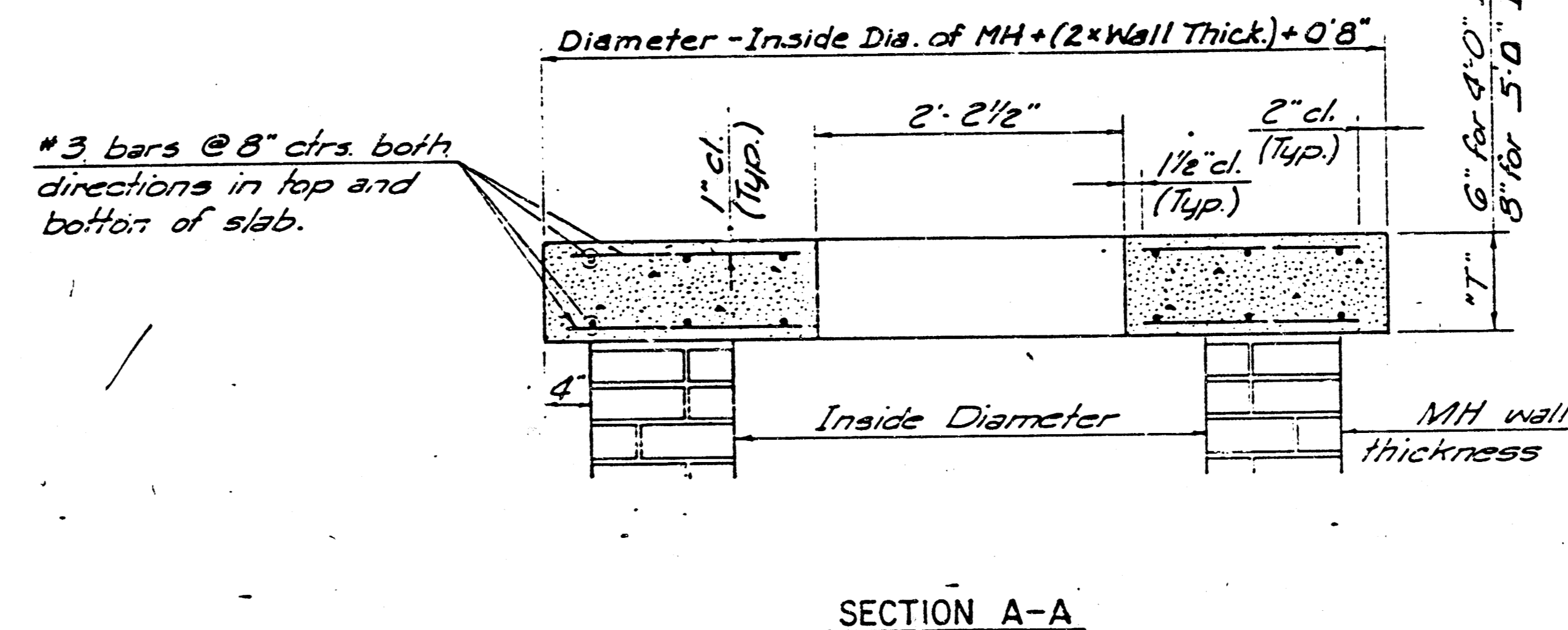
**SHALLOW TYPE "B" MANHOLE**



**PLAN**

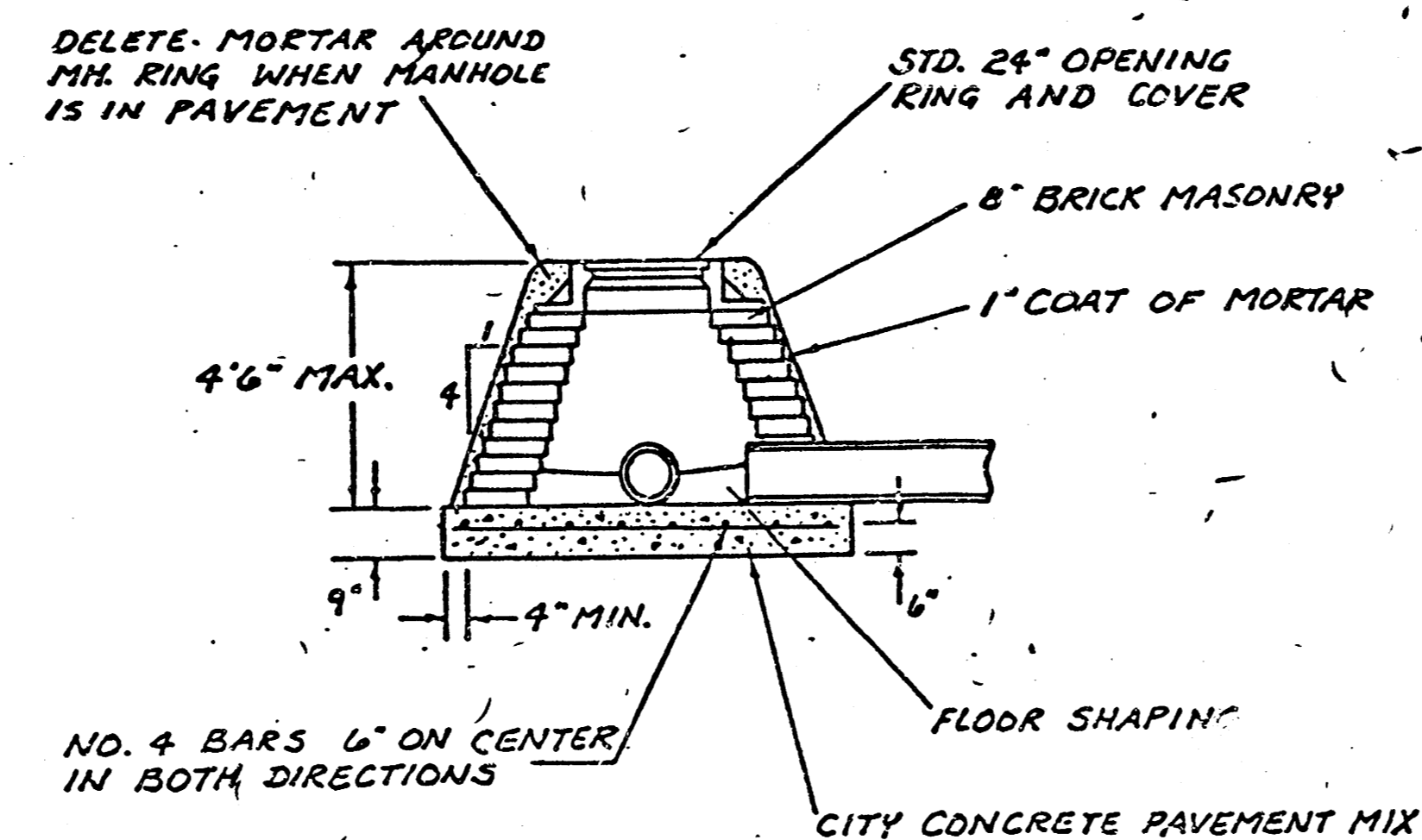


**MASONRY COLLAR DETAIL**

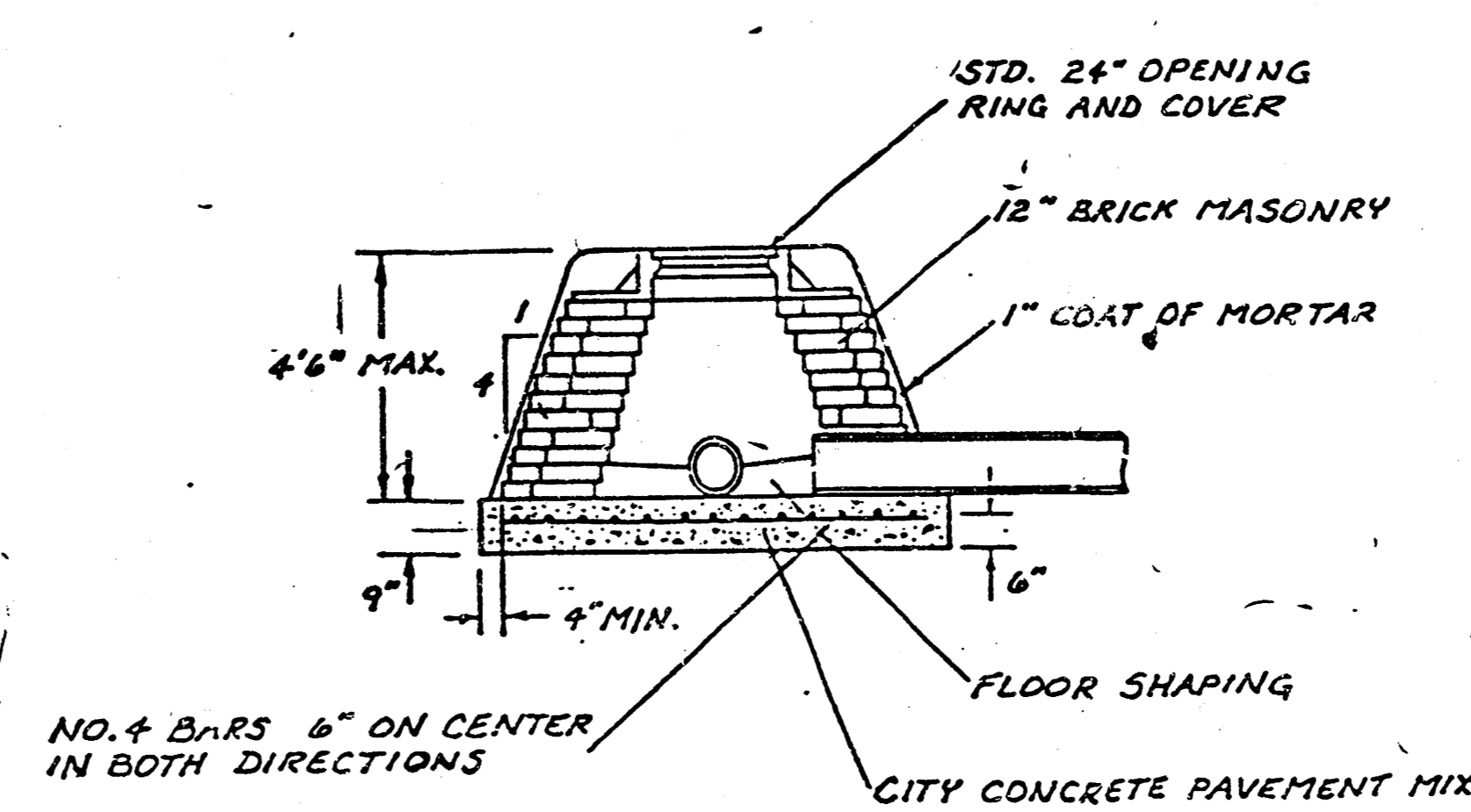


**SECTION A-A**

**FLAT CONCRETE SLAB DETAILS.**



**SPECIAL SHALLOW TYPE 'A' MANHOLE**



**SPECIAL SHALLOW TYPE 'B' MANHOLE**

**GENERAL NOTES**

- MORTAR USED IN MASONRY CONSTRUCTION SHALL CONTAIN 8 SACKS OF CEMENT PER CUBIC YARD. CONCRETE USED IN MANHOLE BASES SHALL CONFORM TO THE REQUIREMENTS OF CONCRETE FOR CONCRETE PAVEMENT CONSTRUCTION AS SPECIFIED IN THE CITY STANDARD PAVING SPECIFICATIONS USING CITY CONCRETE CEMENT MIX WITHOUT AIR ENTRAINING ADMIXTURE. MORTAR SHALL BE PLACED AROUND THE MANHOLE RING AS SHOWN ON THE DRAWINGS WHEN MANHOLES ARE CONSTRUCTED IN UNPAVED AREAS. TYPE "A" SHALLOW MANHOLES CAN BE USED ON SEWERS WHEN THE MANHOLE IS NOT LOCATED WITHIN PUBLIC STREET PAVEMENT. MANHOLES CONSTRUCTED WHERE PIPE SIZES ARE SMALLER THAN 24" SHALL HAVE AN INSIDE DIAMETER OF 4". MANHOLES CONSTRUCTED WHERE PIPE SIZES ARE 24" OR LARGER SHALL HAVE AN INSIDE DIAMETER OF 5". COMPLETED MANHOLE SHALL BE WITHOUT LEAKS AND WATER TIGHT.
- REINFORCING STEEL SHALL BE INSTALLED IN THE MANHOLE BASES AND SHALL CONSIST OF NO. 4 BARS PLACED ON 6" CENTERS IN BOTH DIRECTIONS. THE MANHOLE BASE REINFORCEMENT SHALL BE PLACED 6" ABOVE THE BOTTOM OF THE MANHOLE BASE. ALL COSTS FOR FURNISHING AND INSTALLING REINFORCING STEEL SHALL BE INCLUDED IN THE UNIT PRICE BID FOR THE MANHOLE.
- THE FLOORS OF ALL MANHOLES SHALL BE SHAPED WITH FLOW CHANNELS SUCH THAT THE MANHOLES WILL BE SELF-CLEANING AND FREE OF AREAS WHERE SOLIDS COULD BE DEPOSITED AS SEWAGE FLOWS THROUGH THE MANHOLE FROM ALL INLET PIPES TO THE OUTLET PIPE. FLOW CHANNELS SHALL BE FORMED TO MATCH THE BOTTOM HALVES OF THE INFLOWING PIPES AND THE OUTFLOWING PIPE AS SHOWN BY THE DRAWINGS. MANHOLE FLOORS SHALL HAVE SLOPES OF 3 INCHES PER FOOT IN THE AREAS OUTSIDE OF THE FLOW CHANNELS SLOPED TOWARD THE FLOW CHANNELS. PIPES LAID THROUGH MANHOLES SHALL HAVE THE TOP HALF REMOVED TO NEAT LINES FOR THE FULL INSIDE DIAMETER OF THE MANHOLE. MANHOLE FLOORS SHALL THEN BE SHAPED AROUND THE BOTTOM HALF OF THE PIPE WHICH FORMS THE FLOW CHANNEL.
- PIPES INSTALLED WITHIN THE EXCAVATION MADE FOR THE MANHOLE SHALL BE CRADLED WITH CONCRETE TO THE LIMITS OF THE MANHOLE EXCAVATION. WHEN CLAY PIPE IS USED, THE CRADLE SHALL EXTEND TO THE FIRST JOINT OUTSIDE THE MANHOLE. THE CRADLE SHALL BE TERMINATED AT THE CLAY PIPE JOINT IN A MANNER WHICH WILL MAINTAIN THE FLEXIBILITY OF THE JOINT. COST OF CRADLE WITHIN MANHOLE EXCAVATION OR TO CLAY PIPE JOINTS ADJACENT TO MANHOLE SHALL BE INCLUDED IN THE UNIT PRICE BID FOR THE MANHOLE.
- MANHOLE COVER CASTINGS AND MANHOLE FRAME CASTINGS SHALL CONFORM TO THE REQUIREMENTS AS INDICATED IN THE STANDARD SPECIFICATIONS AND AS SHOWN IN THE STANDARD DETAIL DRAWINGS.
- THE CROWNS OF INFLOWING PIPES SHALL NEVER BE SET LOWER THAN THE CROWN OF THE OUTFLOWING PIPE.
- STANDARD SHALLOW MANHOLES TYPE "A" AND "B" SHALL BE PAID FOR AT THE UNIT PRICE BID PER EACH FOR THE TYPE AND DIAMETER INDICATED. STANDARD SPECIAL SHALLOW MANHOLES TYPE "A" AND "B" SHALL BE PAID FOR AT THE UNIT PRICE BID PER EACH FOR THE TYPE INDICATED. ALL STANDARD SHALLOW MANHOLE DIAMETERS WILL BE 4" UNLESS INDICATED OTHERWISE.

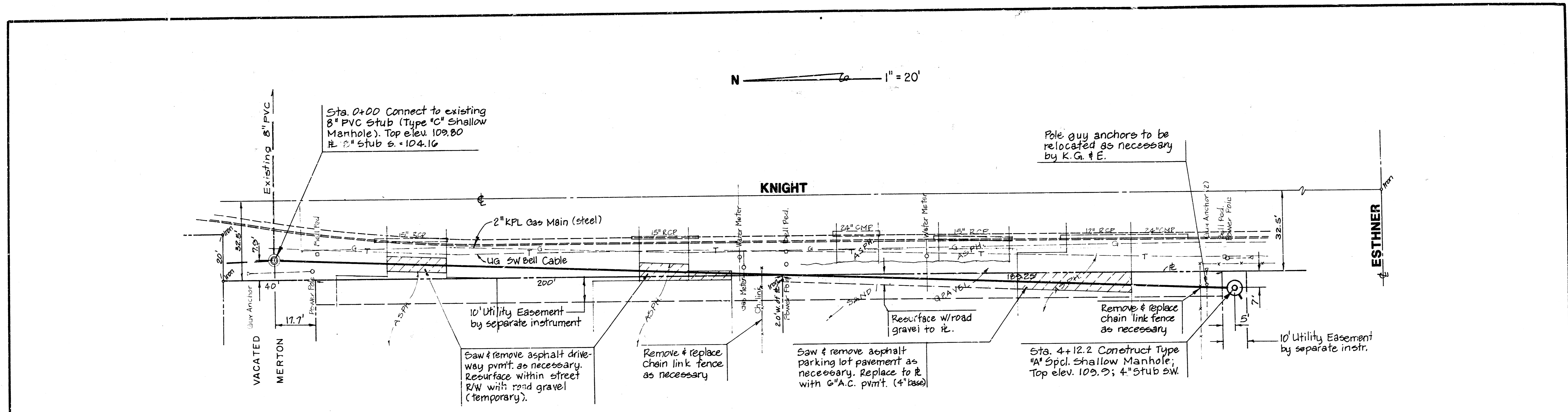
3/3

**CITY OF WICHITA, KANSAS  
STANDARD SHALLOW MANHOLES  
TYPE 'A' AND TYPE 'B'**

**468-76-245-82053-000-000-001**

Designed by	Checked by
Drawn by	Date

**FILMED FROM THE BEST AVAILABLE COPY**



**BENCH MARK**

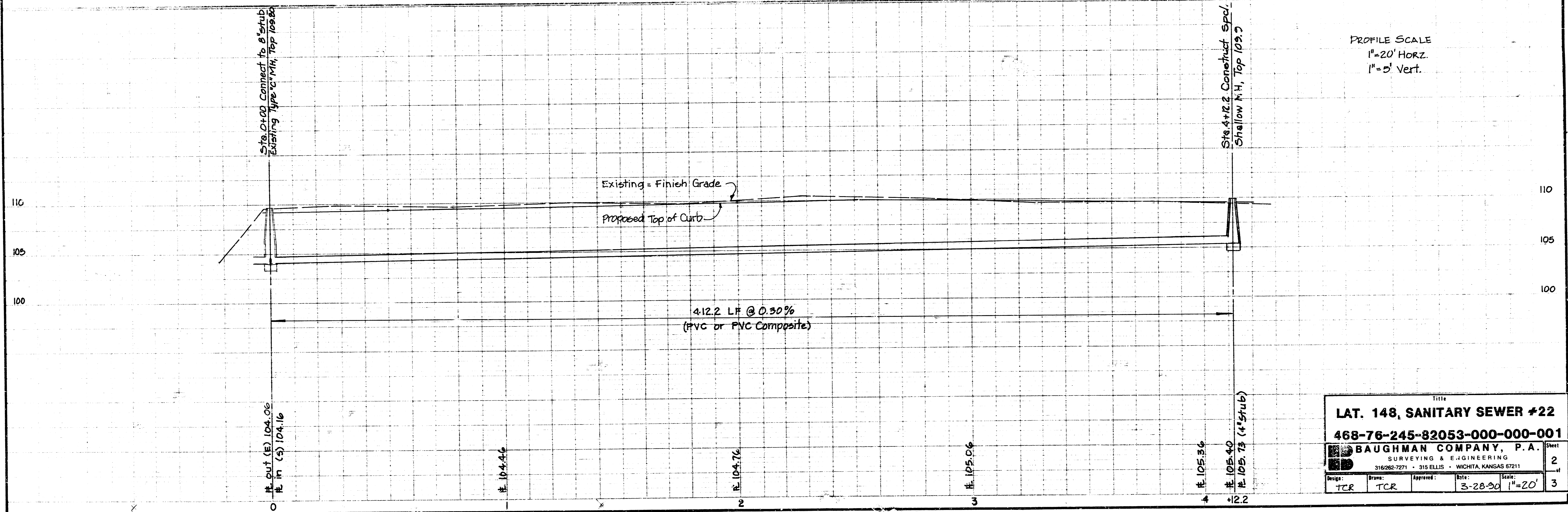
R.R. spike in N. face of power pole, s. side of Esther @ Knight, Elev. 110.99

LOT 1

LOT 2

LOT 3

REDMOND 3RD ADDITION



Title			
LAT. 148, SANITARY SEWER #22			
468-76-245-82053-000-000-001			
BAUGHMAN COMPANY, P.A.			
SURVEYING & ENGINEERING			
316262-7271 • 315 ELLIS • WINCHITA, KANSAS 67211			
Design:	Drawn:	Approved:	Date:
TCR	TCR		3-28-90
			Scale: 1" = 20'
			Sheet: 2
			of: 3

FILMED FROM THE BEST AVAILABLE COPY

# LATERAL 148, SANITARY SEWER NO. 22

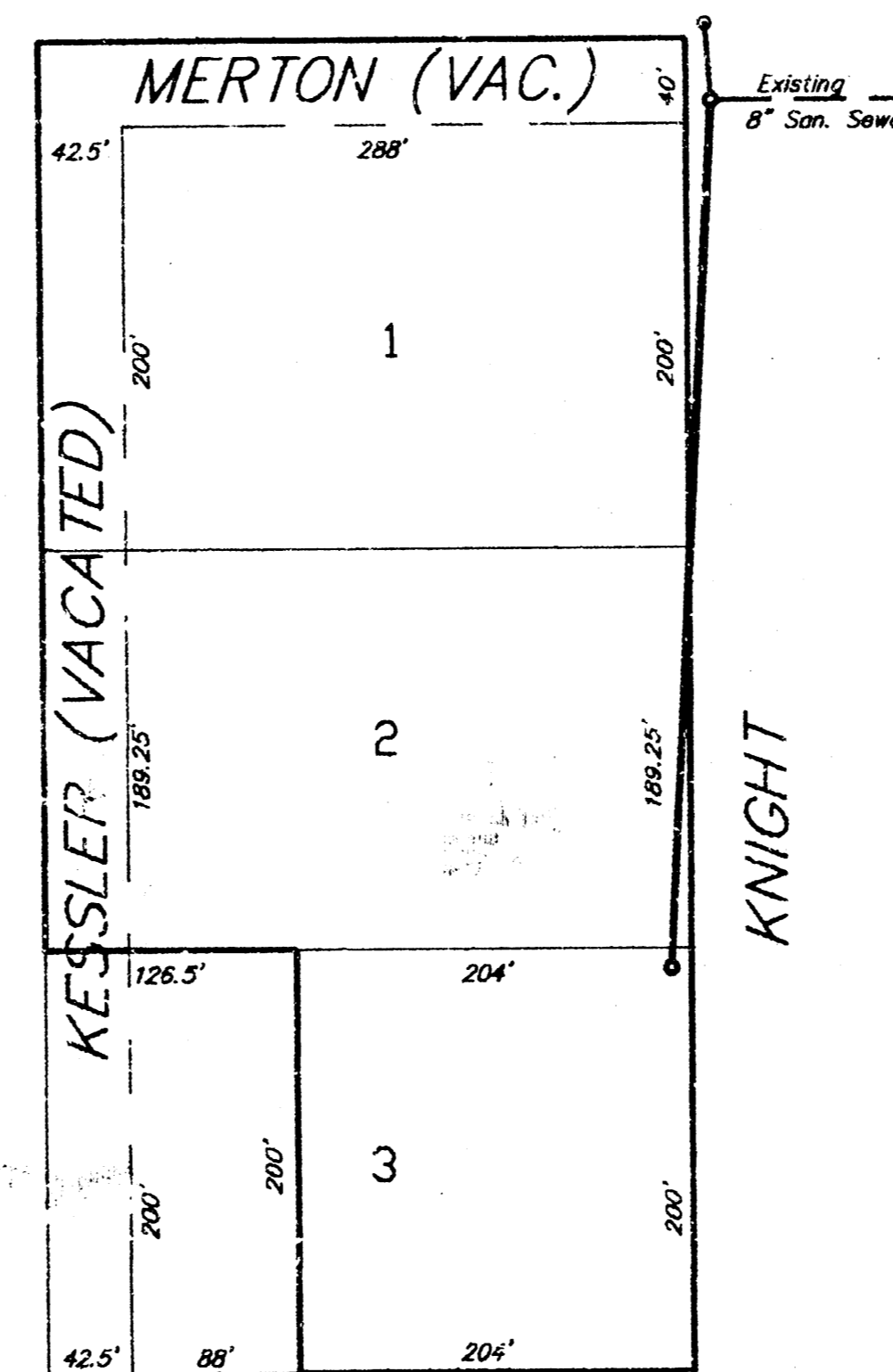
## SANITARY SEWER EXTENSION TO SERVE REDMOND 3RD ADDITION

**PROJECT NUMBER**  
**468-76-245-82053-000-000-001**

**INDEX CODE** 740423

### GENERAL NOTES

- Underground utility service lines and overhead utility pole lines are to be adjusted, as necessary, by others prior to construction unless the plans specifically call for their adjustment by the Contractor or unless the plans specifically identify a utility to be adjusted by its owner during construction. Existing utilities and their location, as shown on the plans, represent the best information obtainable for design. The Contractor will be required to work around existing utilities within the right-of-way which do not conflict with proposed construction.
- Rubble from the removal of miscellaneous structures and excess excavation which is to be wasted shall be disposed of on sites to be provided by the Contractor. These sites shall be approved by the Engineer as to suitability, appearance and site location. Locations that, in the opinion of the Engineer, will leave an unsightly appearance will not be approved.
- The Contractor shall give all property owners and/or tenants of developed property abutting the construction of this project a minimum of ten (10) days advance notice prior to start of construction.
- Only active building sewer lines which connect actual buildings to the sewer system are to be reconnected to the new sewer construction. Building sewer lines and/or connections which have been abandoned are not to be reconnected to the new sewer construction. It will be the sole responsibility of the Contractor to ascertain which such building sewer lines and/or connections are active and which such sewers and/or connections have been abandoned. All work involved with building sewer line construction and/or building sewer connections shall conform to the applicable section of the Standard Specifications. Cost of any such building sewer connections shall be incidental to the project.
- The Contractor shall be responsible for preserving property irons. The Contractor will be required to re-establish any property irons which are damaged or destroyed by his construction operations. Such irons shall be re-established by a licensed land surveyor in accordance with state laws.
- Pavement removal and/or replacement will be measured and paid for on the lineal foot basis as measured along the center line of the sewer regardless of width or thickness. Minimum limits of such pavement removal and replacement shall be one foot beyond the limits of the excavation made for the sewer or the structure, except where the lines of removal are within three (3) feet of an existing joint the limits of removal shall be extended to the joint. Removal and replacement of existing pavement shall conform to the applicable sections of the City of Wichita Standard Specifications.
- 



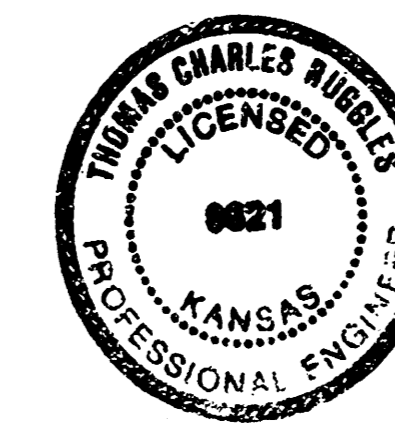
ESTHNER

IMPROVEMENT DISTRICT

### INDEX

- TITLE SHEET
- PLAN AND PROFILE
- MANHOLE DETAILS

BUILT FOR PLAN  
RDL  
6-90



April 6, 1990

TITLE SHEET				
<b>BAUGHMAN COMPANY P. A.</b> SURVEYING & ENGINEERING 316/262-7271 • 315 ELLIS • WICHITA, KANSAS 67211				REV.
PROJECT NUMBER <b>468-76-245-82053-000-000-001</b>				SHEET <b>1</b>
DESIGN TCR	DRAWN TCR	APPROVED	DATE 3-28-90	SCALE 1"=100' <b>3</b>

FILMED FROM THE BEST  
AVAILABLE COPY.....