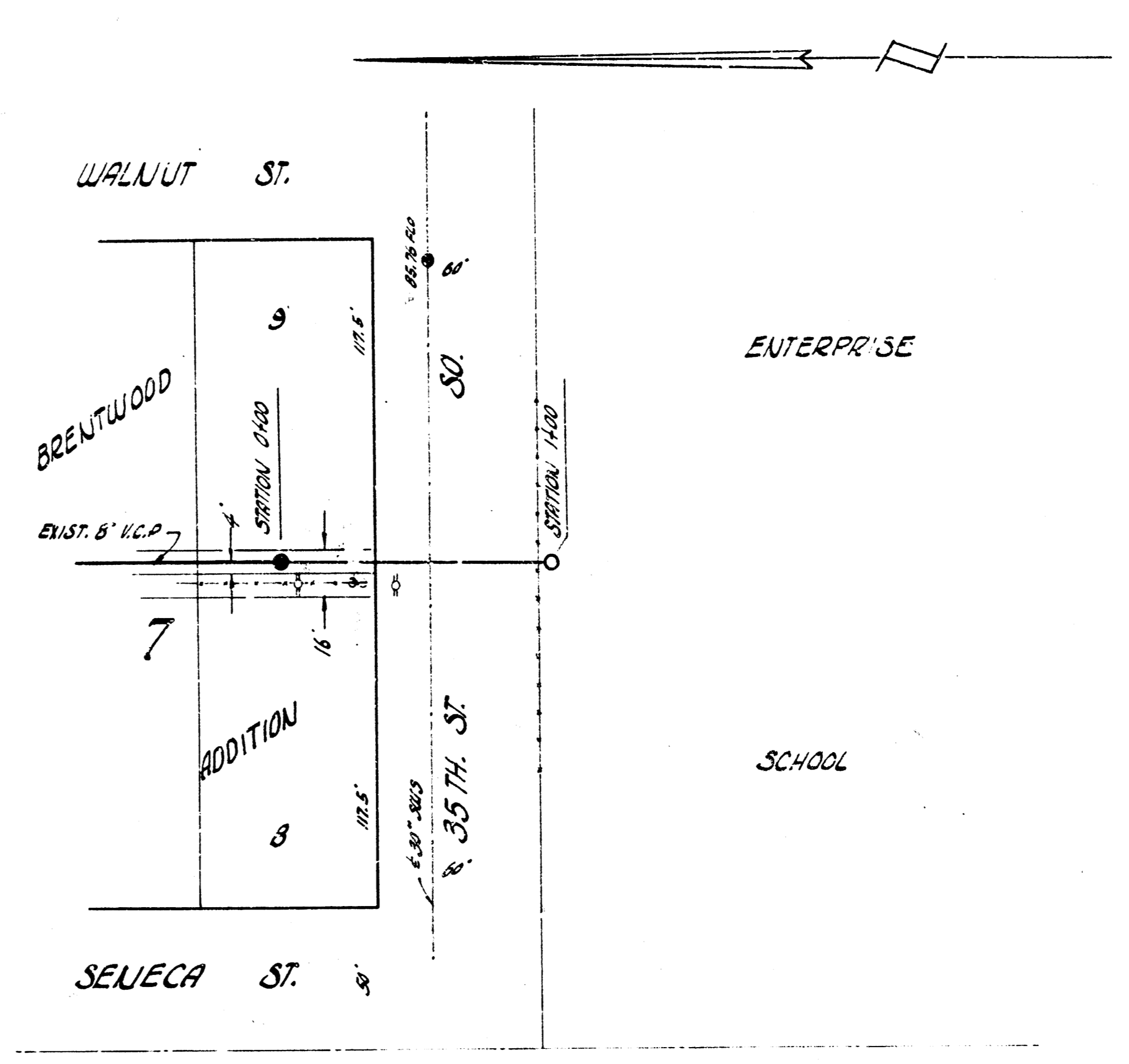


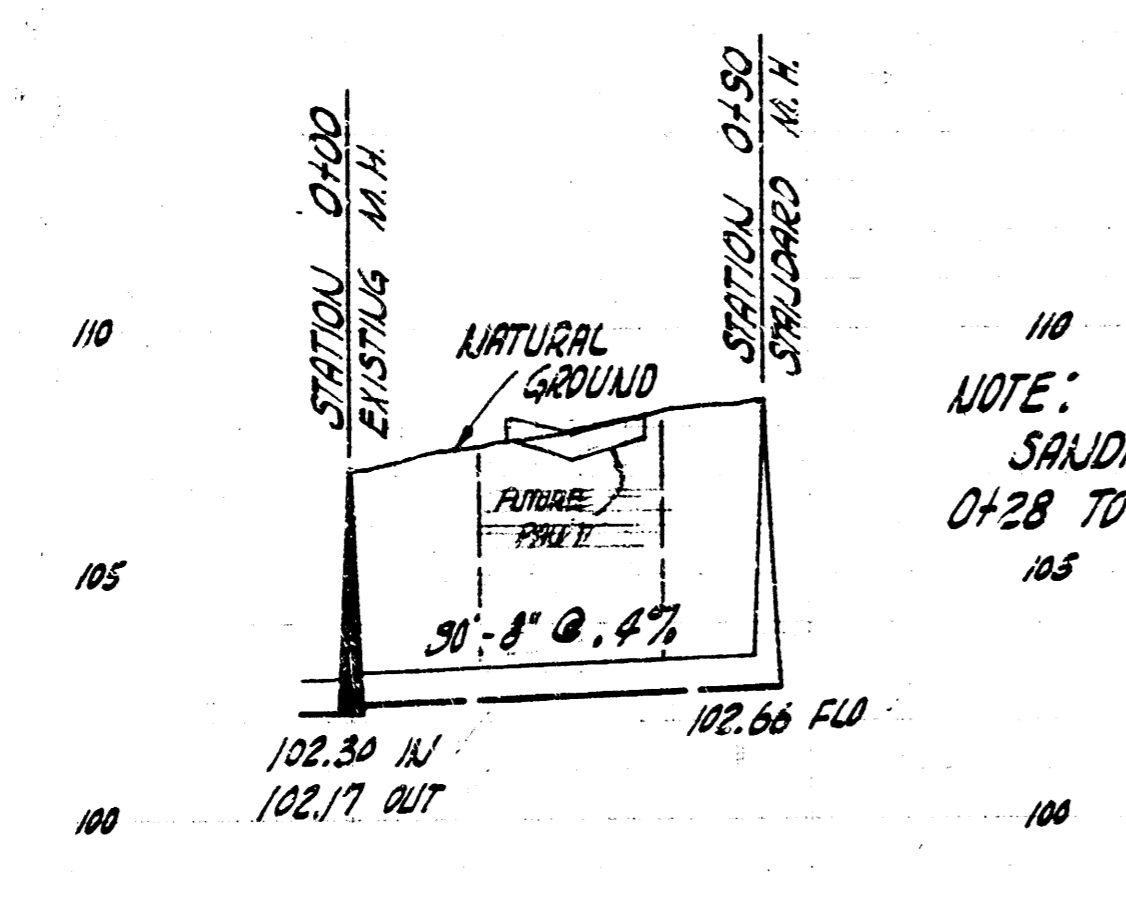
B.M. 108.35 N.E. COR. LOWER CONC. STEP EAST ENT. TO SHELLEY OIL CO. BLDG.
 1/2 BLOCK W. OF WASHINGTON

PLAN SCALE 1"=40'
 PROFILE SCALE 1"=40' HOR, 1"=4' VERT.



B.M. 94.22 NW. COR. PORCH - AD. SW. COR. 35TH & SEUECA

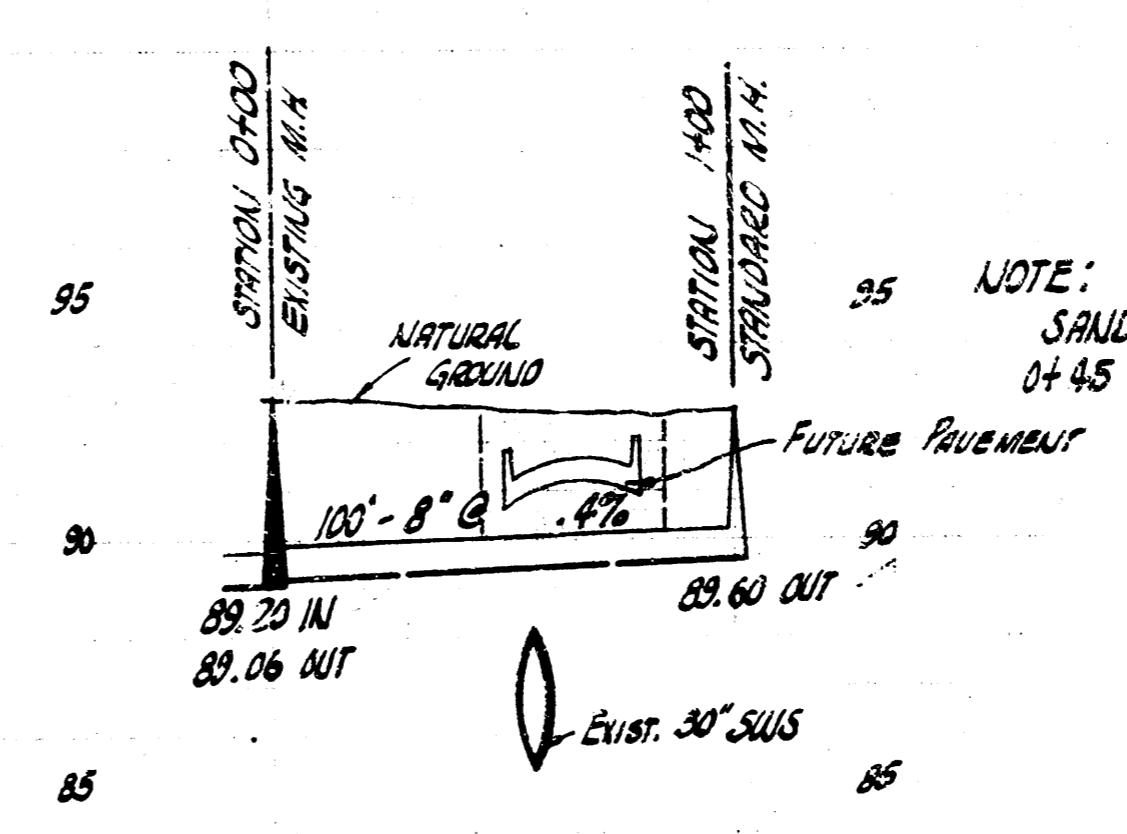
PLAN SCALE 1"=40'
 PROFILE SCALE 1"=40' HOR, 1"=4' VERT.



NOTE:
 SANDFILL FROM STATION
 0+28 TO STATION 0+68

30'-8" @ .4%

EXT. OF LAT. 11 SAN. SEWER #1
 CITY OF WICHITA, KANSAS
 B.E. SMITH CITY ENGINEER
 PRIVATE CONTRACT - DATE



NOTE:
 SANDFILL FROM STATION
 0+45 TO STATION 0+85

100 IN. FT. @ .4% GR.

EXT. OF LAT. 7 SANITARY SEWER 22
 CITY OF WICHITA, KANSAS
 B.E. SMITH CITY ENGINEER
 PRIVATE CONTRACT - DATE